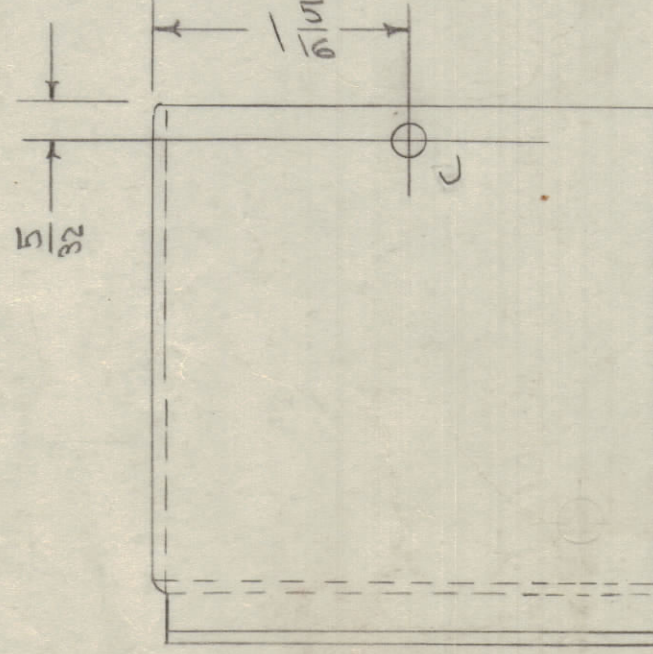
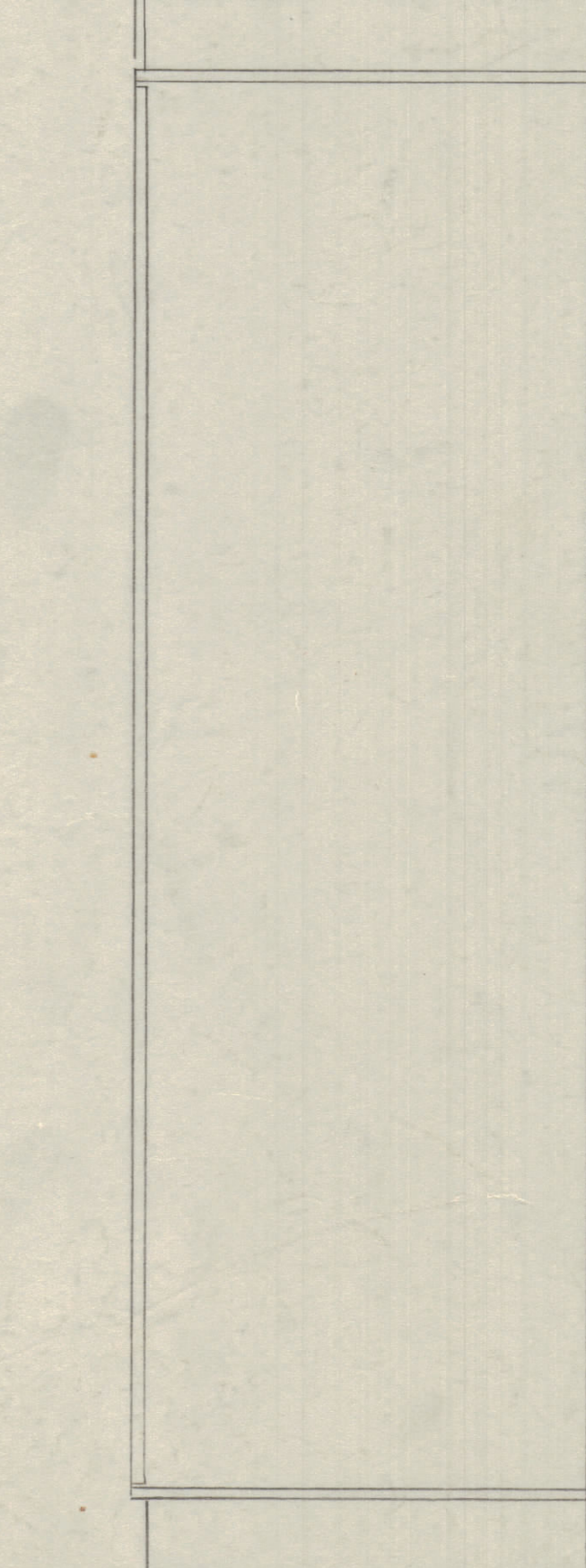
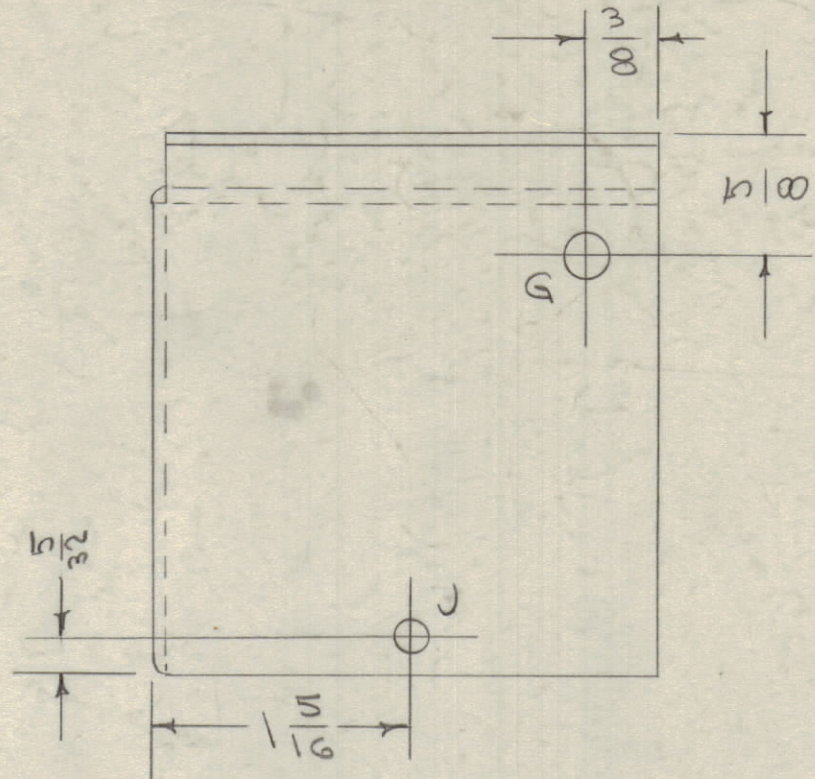
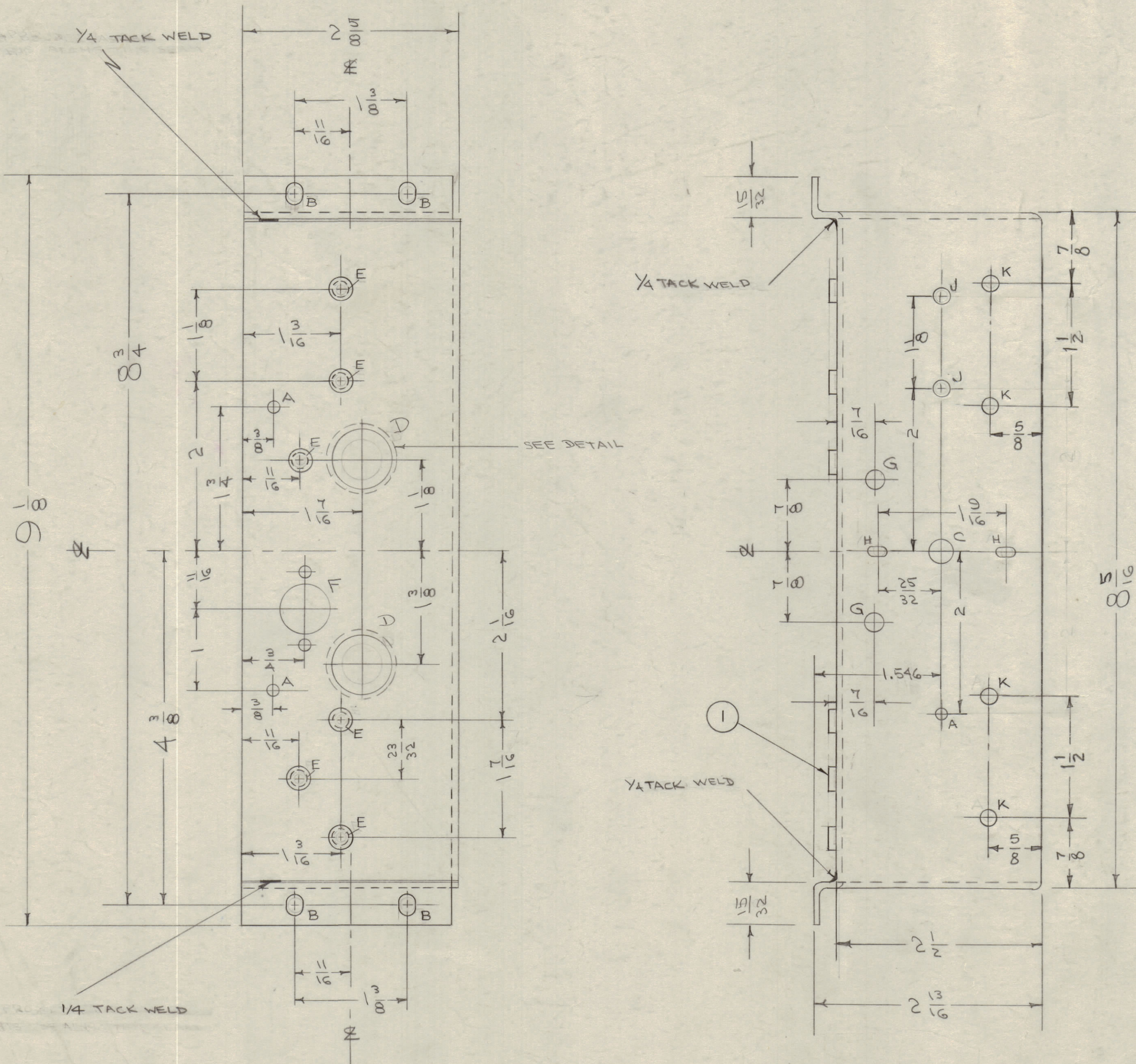


IF IT IS FOUND DESIRABLE TO CHANGE ANY TOLERANCE OR OTHER DETAIL SPECIFIED ON THIS DRAWING NOTIFY THE PURCHASER PROMPTLY.
 MAXIMUM ALLOWABLE TOLERANCES HAVE BEEN DETERMINED AND DEVIATIONS WILL BE CAUSE FOR REJECTION. REMOVE ALL BURRS AND SHARP EDGES

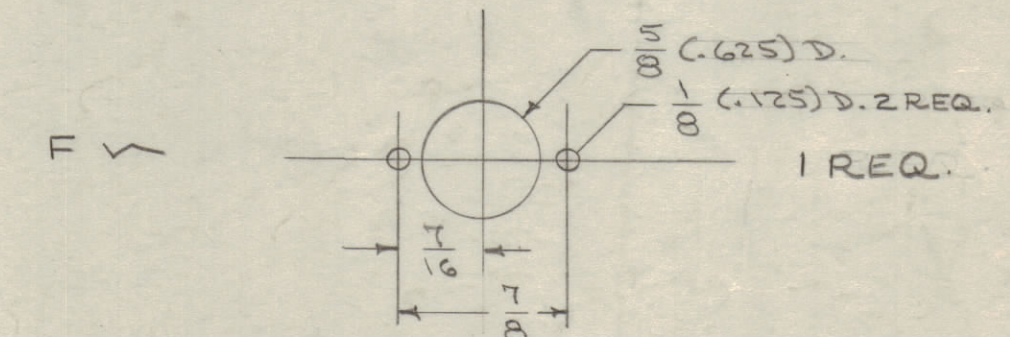
NOTICE TO PERSONS RECEIVING THIS DRAWING

THE TECHNICAL MATERIEL CORPORATION claims proprietary right in the material disclosed herein. This drawing is issued in confidence for engineering information only and may not be reproduced or used to manufacture any thing shown hereon without permission from THE TECHNICAL MATERIEL CORPORATION to the user. This drawing is loaned for mutual assistance and is subject to recall at any time.

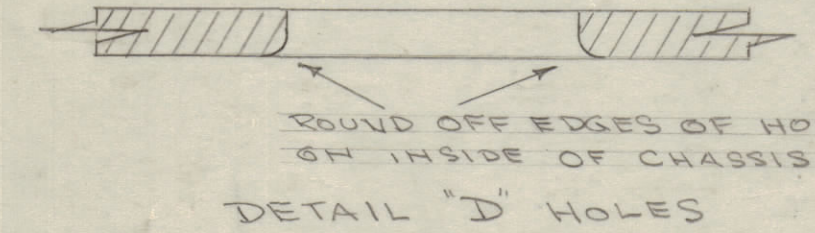
Property of:
 THE TECHNICAL MATERIEL CORPORATION
 MAMARONECK, NEW YORK



- A - 3/64 DIA. HOLES 3 REQ.
- B - 3/16 X 1/4 SLOTS 4 REQ.
- C - 3/8 DIA. HOLES 1 REQ.
- D - 3/4 DIA. HOLES 2 REQ.
- E - .191/.194 DIA. HOLES 6 REQ.



- G - 1/4 (.250) D. 3 HOLES REQ.
- H - 1/8 x 1/4 SLOTS 2 "
- J - 13/64 DIA. HOLES 4 REQ.
- K - 3/16 (.187) DIA. HOLES 4 REQ'D.



L	1	CHG'D POS. OF 2 1/2 DIM.	7284	16655	RME		
K	1	4" HOLES WERE A HOLES	3304	11150	JTB		
J	2	B SLOTS WERE 3/64 D.	810	276	CY		
I	1	E HOLES WERE 6-32 TAPS		60			
H	1	Four A Holes added	874	225	DM		
G	1	S-404 YEL. IRIDITE WAS					
F	1	S-101 CAUSTIC DIP	159	1001	OB		EMN
E	1	TACK WELD WAS SEAM WELD	2/24/67	6	K6		
D	1	Holes were 5 REQ.	3/4/60	5	ES		
C	2	Blank site was 5/16 x 3/8	8/16/60	4	EMD		
B	1	1/16 DIA HOLES WERE 2 REQ.					
A	1	A HOLES WERE A HOLES					
	2	D HOLES WERE 1/2 D					
	1	D HOLE DETAIL ADDED	7/2/68	1	ESD		

ISSUE	ITEM	CHANGED FROM	DATE	CH. NO.	DRAFTS	CHECKER	ENG. APP.
TOLERANCES							
ALL OTHERS		DEC. DIM. ±					
		FRAC. DIM. ±					
		ANGULAR DIM. ±					
			DRILL PUNCH, COMMERCIAL STOCK SIZES AND MANUFACTURERS TOLERANCES ARE NOT INCLUDED.				

REQ PER UNIT	MODEL	PROJECT NO.	ASSY. NO.	DATE
1	GPR-90RXD			S-4-66
1	GPR			6-14-55

REQ. ITEM	PART NO.	DESCRIPTION	SYMBOL
6	1	NT-129-632-4 SWAGE NUT	
		THE TECHNICAL MATERIEL CORP. MAMARONECK, NEW YORK	
		ALUMINUM - # CHASSIS	
		MATERIAL WEIGHT PER PC. ANTENNA SECTION	
		TYPE & TEMPER. CDDG-1A-55	
		HEAT TREAT. SPEC. #	
		FINISH & SPEC. NO. S-404 IRIDITE	

