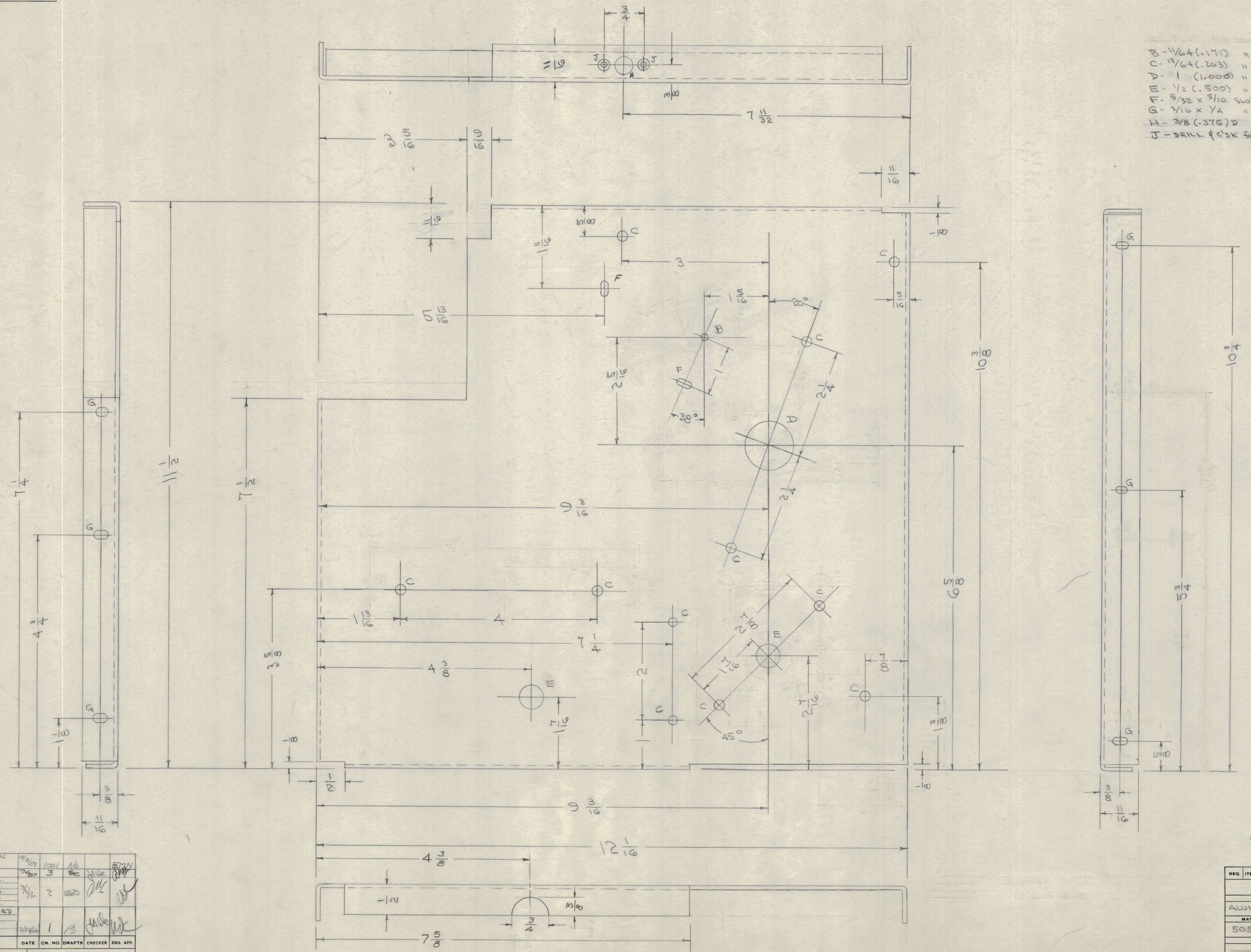


IF IT IS FOUND DESIRABLE TO CHANGE ANY TOLERANCE OR OTHER DETAIL SPECIFIED ON THIS DRAWING NOTIFY THE PURCHASER PROMPTLY.
 MAXIMUM ALLOWABLE TOLERANCES HAVE BEEN DETERMINED AND DEVIATIONS WILL BE CAUSE FOR REJECTION. REMOVE ALL BURRS AND SHARP EDGES

- B - 1/64 (.0156) " 1 HOLES REQ.
- C - 13/64 (.203) " 11 " "
- D - 1 (1.000) " 1 " "
- E - 1/2 (.500) " 2 " "
- F - 5/32 x 5/16 SLOT 1 SLOT "
- G - 3/16 x 1/4 " 7 " "
- H - 3/8 (.375) " 1 HOLE REQ.
- J - DRILL #3 SK for #3 F.H.S 2 HOLES REQ.



NOTICE TO PERSONS RECEIVING THIS DRAWING
 THE TECHNICAL MATERIEL CORPORATION claims proprietary right in the material disclosed hereon. This drawing is issued in confidence for engineering information only and may not be re-used or used to manufacture any item shown herein without permission from THE TECHNICAL MATERIEL CORPORATION to the user. This drawing is loaned for mutual assistance and is subject to recall at any time.
 Property of:
 THE TECHNICAL MATERIEL CORPORATION
 MAMARONECK, NEW YORK

REF. DWG. - LD-266

ISSUE	ITEM	CHANGED FROM	DATE	CN. NO.	DRAFTS	CHECKER	ENG. APP.
D	1	S-404 VEL. TRIDITE WAS 5-101 CAUSTIC DTD	12/8/57	1001	AB	JMK	WJW
C	1	Notch Added	3/2/57	3	AB	JMK	WJW
B	5	G SLOTS WERE G REQ.	3/1/56	2	AB	JMK	WJW
B	4	F SLOTS WERE 3 REQ.					
B	3	H HOLES WERE 3 REQ.					
B	2	C HOLES WERE 2 REQ.					
B	1	B HOLES WERE 4 REQ.					
A	4	H & J HOLES ADDED					
A	3	ALLOY WAS 325					
A	2	2 7/16 WAS 2 3/16					
A	1	1 3/16 WAS 1 1/16	3/24/56	1	AB	JMK	WJW

TOLERANCES
 ALL DEC. DIM. ±
 OTHERS FRAC. DIM. ±
 ANGULAR DIM. ±

DRILL PUNCH, COMMERCIAL STOCK SIZES AND MANUFACTURERS TOLERANCES ARE NOT INCLUDED.

REQ. PER UNIT	MODEL	PROJECT NO.	ASSY. NO.	DATE
1	RTF			9-13-55

REQ. ITEM	PART NO.	DESCRIPTION	SYMBOL
064		THE TECHNICAL MATERIEL CORP. MAMARONECK, NEW YORK	
ALUMINUM		FRONT PLATE	
MATERIAL	WEIGHT PER PC	5052-H32	POW/AMP
TYPE & TEMPER		COO 9/13/55	
		DRAWN	ELEC. DES. APP. MECH. DES. APP.
		JMK	WJW
		CHECKED	FINAL APPROVAL
			MS-685 D

MS-685 D