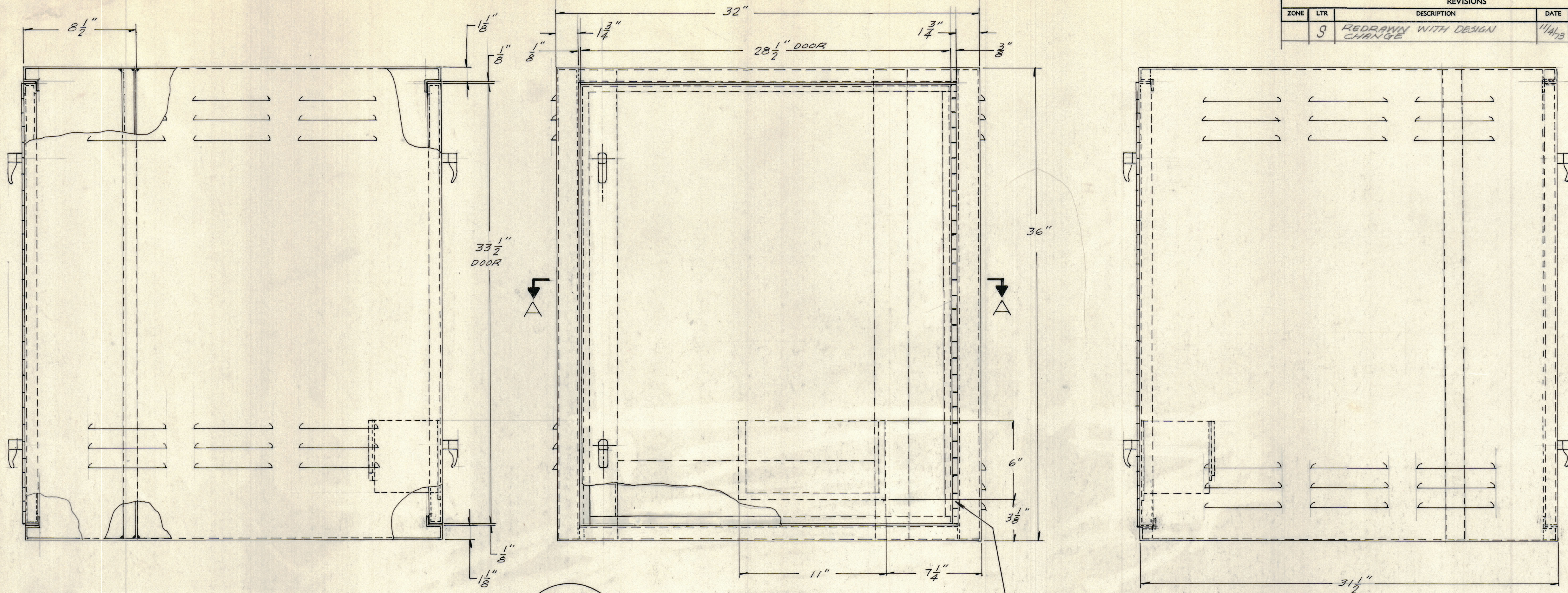


REVISIONS						
ZONE	LTR	DESCRIPTION	DATE	DRAFT	CHK'D	APPD
	9	REDRAWN WITH DESIGN CHANGE	11/14/73	ESF	24	



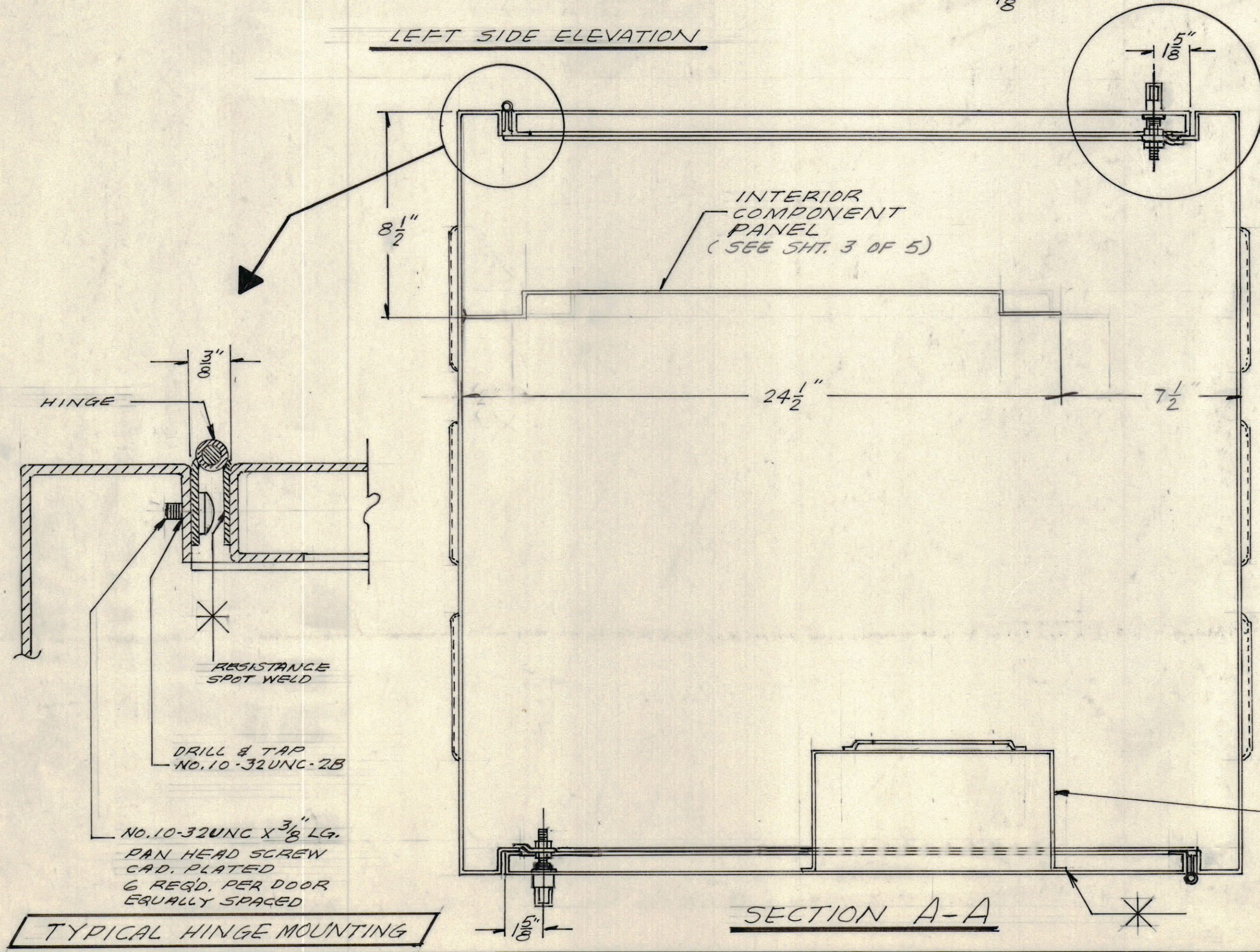
LEFT SIDE ELEVATION

FRONT ELEVATION

RIGHT SIDE ELEVATION

STEEL HINGE  
1 1/2" (OPEN) X .062  
WITH 3/16" DIA. PIN.  
LENGTH = 33 1/2"

- NOTES:
1. WELD ALL JOINTS IN ACCORDANCE WITH AWS STANDARDS FOR WELDING
  2. ALL WELDS TO BE PROPERLY CLEANED
  3. ALL SURFACE WELDS TO BE CLEANED AND GROUND SMOOTH.
  4. REMOVE ALL BURRS AND SHARP EDGES
  5. CLEAN, PRIME AND PAINT IN ACCORDANCE WITH TMC SPECIFICATION P4000



SECTION A-A

TYPICAL DOOR FASTENER MOUNTING

TYPICAL HINGE MOUNTING

MANUAL / GARD  
HOLDER (SEE SH. 3 OF 5)  
WELD TO INTERIOR  
SIDE OF FRONT  
DOOR. (SEE FRONT  
ELEVATION FOR  
LOCATION

INTERPRET DRAWING PER LISTED DOCUMENTS		UNLESS OTHERWISE SPECIFIED DIMENSIONS ARE IN INCHES AND INCLUDE CHEMICALLY APPLIED OR PLATED FINISHES REMOVE ALL BURRS AND SHARP EDGES	
DIMENSIONING MIL - STD - 8 SURFACE ROUGHNESS MIL - STD - 10 ABBREVIATIONS MIL - STD - 12 ELECTRONIC SYMBOLS MIL - STD - 15 WELDING SYMBOLS JAN - STD - 19	APPLICATION	TOLERANCES ON FRACTIONS ANGLES DECIMALS +1/-32 1/2°	MATERIAL .075 (14 GA.) COLD ROLLED STEEL
NOTICE TO PERSONS RECEIVING THIS DRAWING THE TMC SYSTEMS AND POWER CORPORATION claims proprietary right in the material disclosed herein. This drawing is issued in confidence for engineering information only and may not be reproduced or used to manufacture anything shown hereon without permission from THE TMC SYSTEMS AND POWER CORPORATION to the user. This drawing is loaned for mutual assistance and is subject to recall at any time.		FINISH SEE NOTE 5	

QTY REQ	QTY REQ	QTY REQ	ITEM	PART NO.	MANUFACTURER	DESCRIPTION	SYM
PARTS LIST							
DRAWN FRAMPTON				DATE 11-8-73	THE TMC SYSTEMS AND POWER CORPORATION SPRINGFIELD, VIRGINIA		
CHECKED 24				DATE 11-6-73			
D. ENG. UA				DATE 12-7-73			
P. ENG. ESF				DATE 12-10-73			
P. MGR.				DATE			
CHIEF, ENG. DEPT. R. [Signature]				DATE 12-14-73	SIZE CODE IDENT NO DWG. NO.		REV
				D 24146	MS6133	S	
				SCALE 1/4" = 1"		SHEET 1 OF 5	