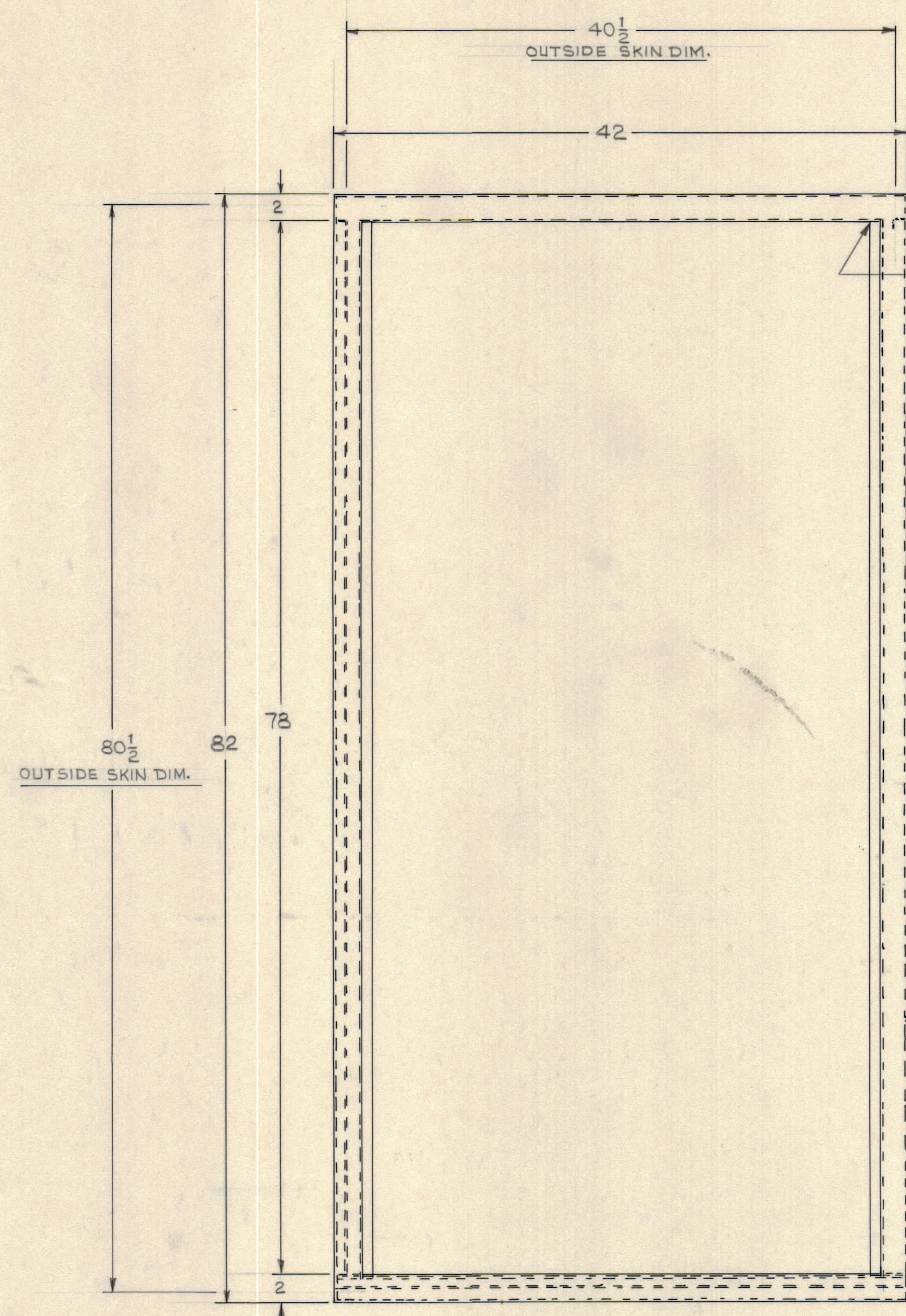
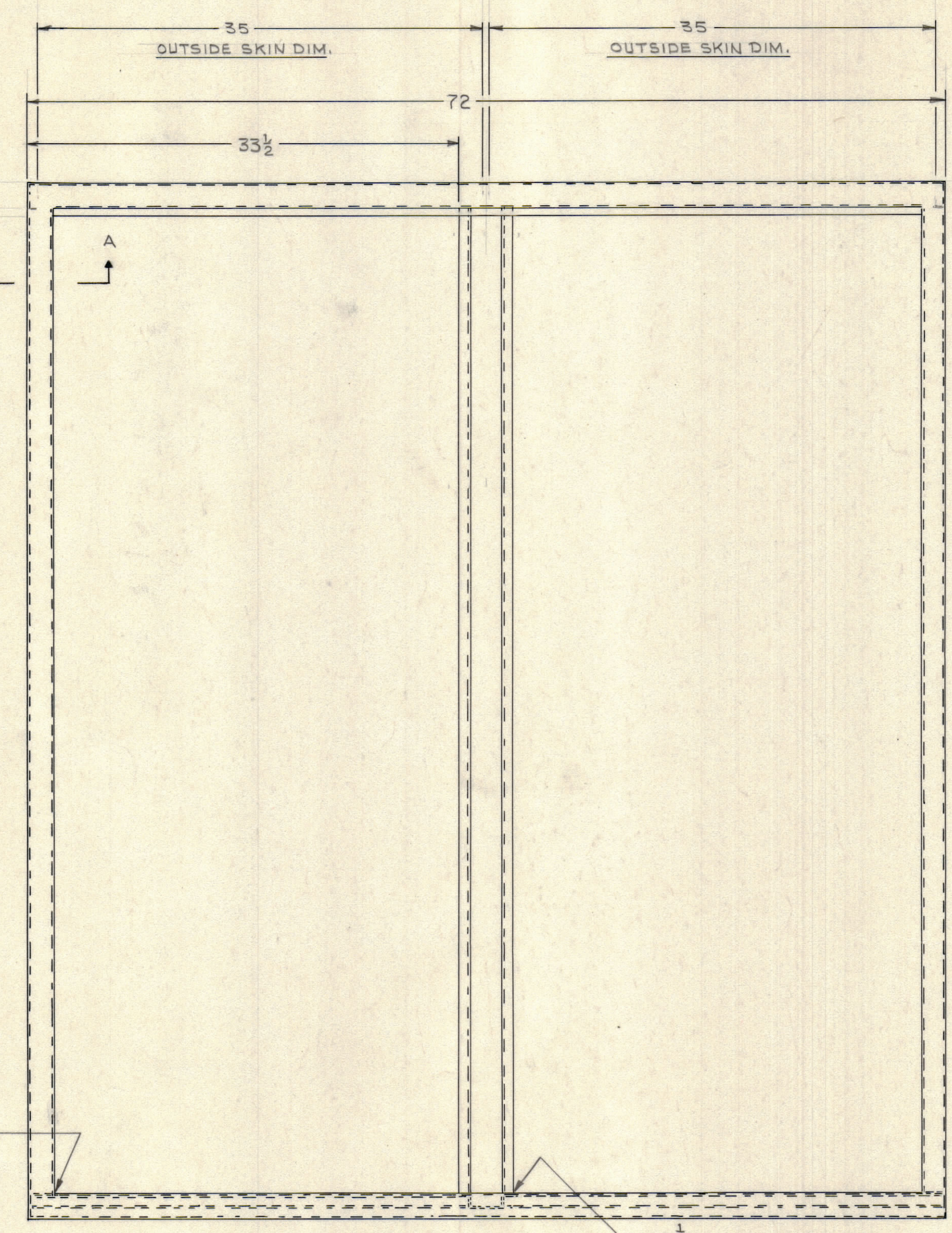


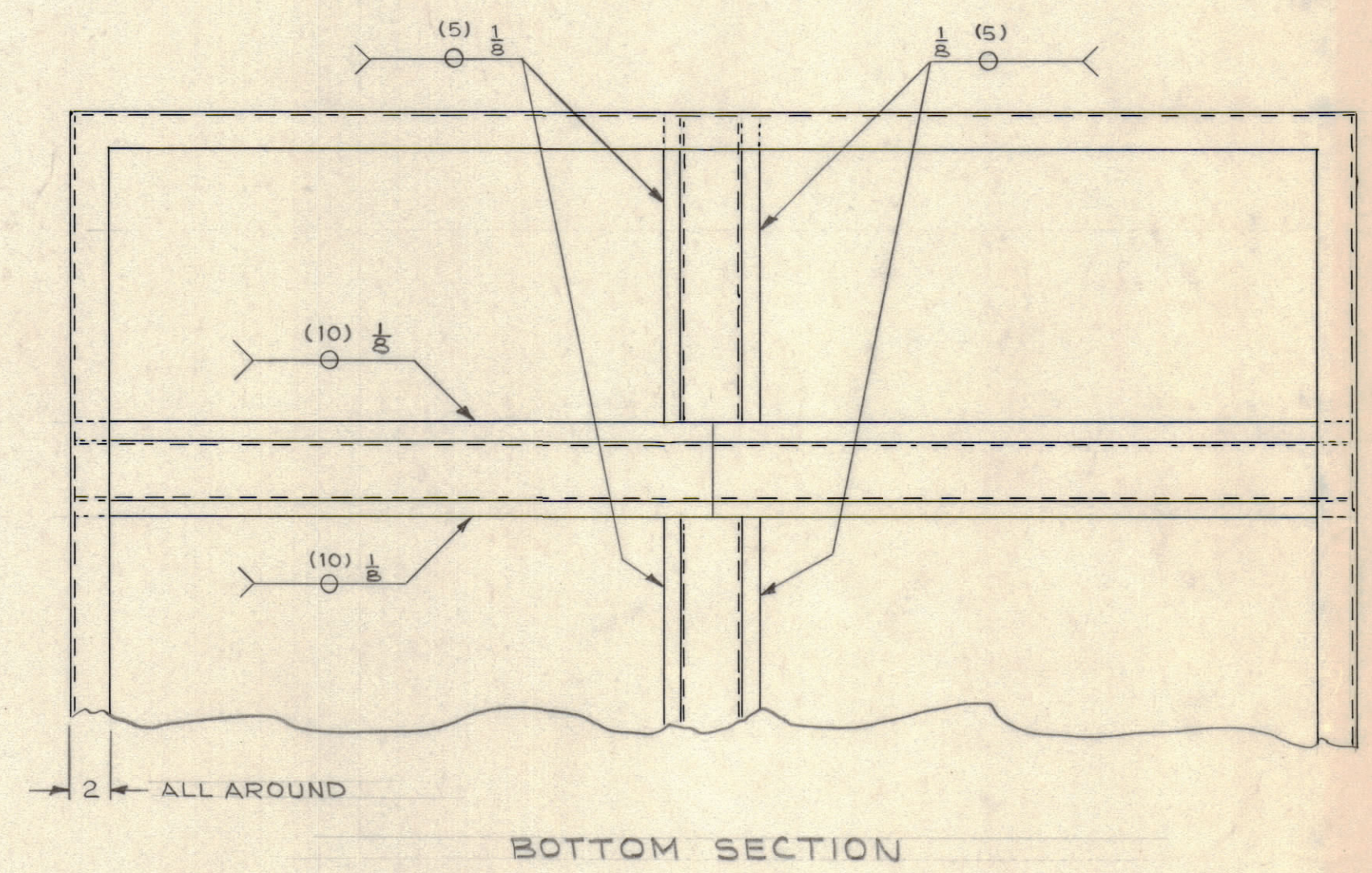
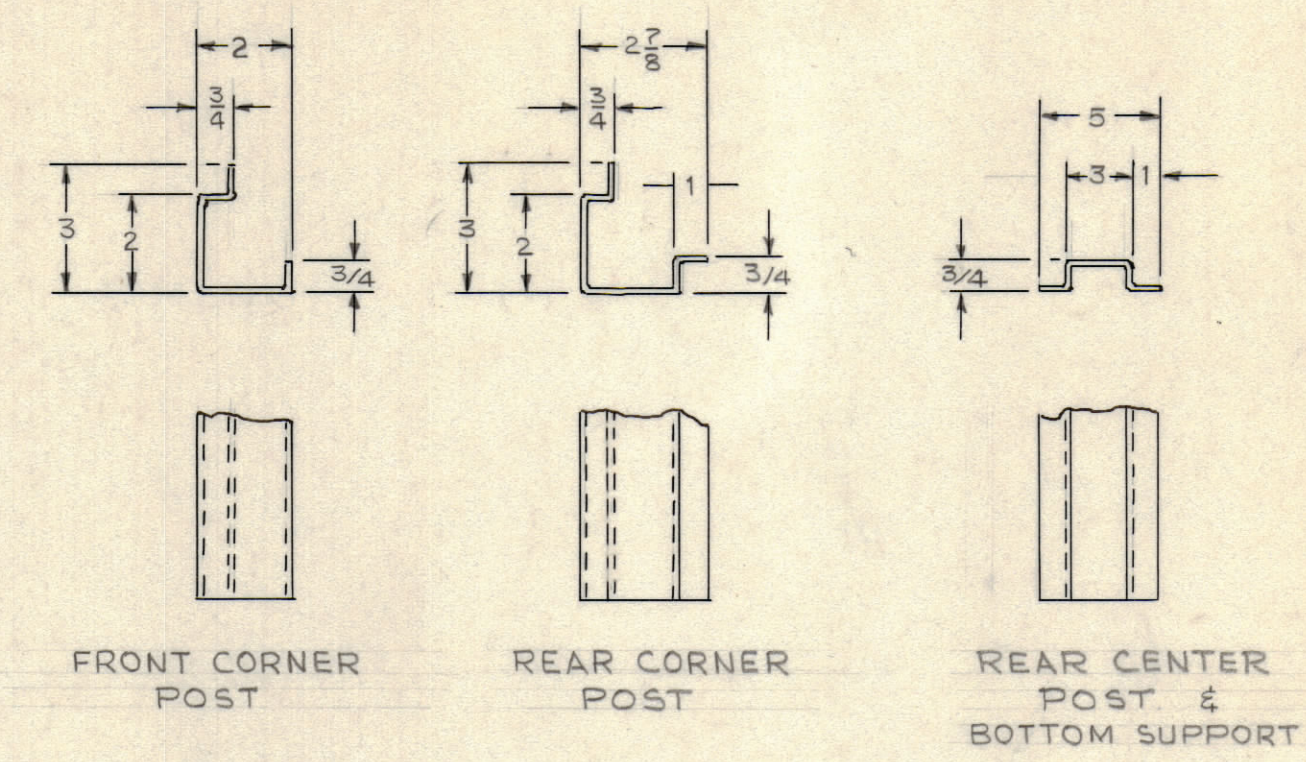
REVISIONS						
ZONE	LTR	DESCRIPTION	DATE	DRAFT	CHK'D	APPD



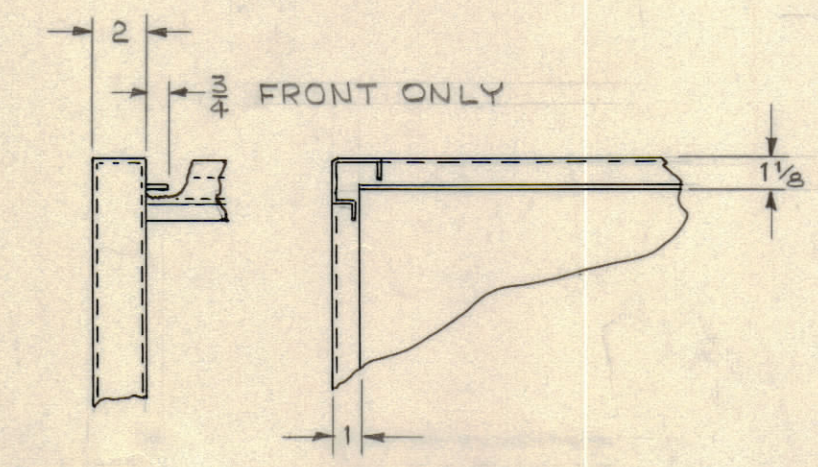
SIDE VIEW



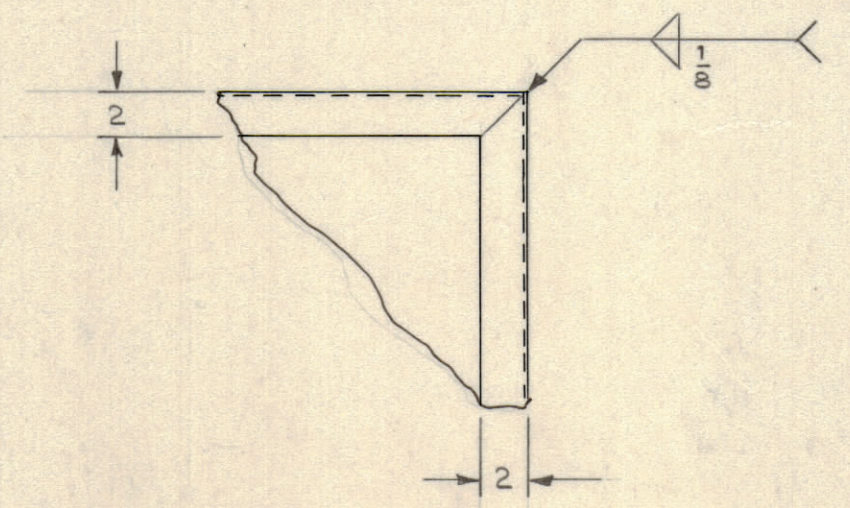
FRONT VIEW



BOTTOM SECTION



TOP INSIDE SECTION VIEW A-A



BOTTOM SECTION

- NOTE:
1. MATERIAL - 11 GAUGE CRS.
 2. SIDE AND REAR SKIN TO BE FABRICATED FROM 14 GA. CRS, MOUNTED WITH 1/4 SELF THREADING SCREWS. SIX (6) VERTICAL, THREE (3) HORIZONTAL, TOTAL 18 EACH SKIN.
 3. REMOVE ALL BURRS AND SHARP EDGES.
 4. PAINT IN ACCORDANCE WITH TMC SPEC NO. P4000
 5. SEE DWG. NO. AX721 FOR HOLE LOCATION IN TOP.

QTY REQ	QTY REQ	QTY REQ	ITEM	PART NO.	MANUFACTURER	DESCRIPTION	SYM
PARTS LIST							

INTERPRET DRAWING PER LISTED DOCUMENTS		UNLESS OTHERWISE SPECIFIED DIMENSIONS ARE IN INCHES AND INCLUDE CHEMICALLY APPLIED OR PLATED FINISHES REMOVE ALL BURRS AND SHARP EDGES		DRAWN MITCH DATE 10-23-72	THE TMC SYSTEMS AND POWER CORPORATION SPRINGFIELD, VIRGINIA
DIMENSIONING MIL - STD - 8 SURFACE ROUGHNESS MIL - STD - 10 ABBREVIATIONS MIL - STD - 12 ELECTRONIC SYMBOLS MIL - STD - 15 WELDING SYMBOLS JAN - STD - 19		TOLERANCES ON FRACTIONS ANGLES DECIMALS ± 3/32		CHECKED DATE	
APPLICATION		MATERIAL NOTED		D. ENG. DATE	
NEXT ASSY USED ON		FINISH		P. ENG. <i>ERB</i> DATE NOV 72	
NOTICE TO PERSONS RECEIVING THIS DRAWING THE TMC SYSTEMS AND POWER CORPORATION claims proprietary right in the material disclosed hereon. This drawing is issued in confidence for engineering information only and may not be reproduced or used to manufacture anything shown hereon without permission from THE TMC SYSTEMS AND POWER CORPORATION to the user. This drawing is loaned for mutual assistance and is subject to recall at any time.				P. MGR. DATE	

CONTROL CABINET FABRICATION ASSEMBLY 120/208 VOLT SYSTEM FAA.			
SIZE	CODE IDENT NO	DWG. NO.	REV
D	24146	MS6140	A
SCALE		SHEET 2 OF 3	