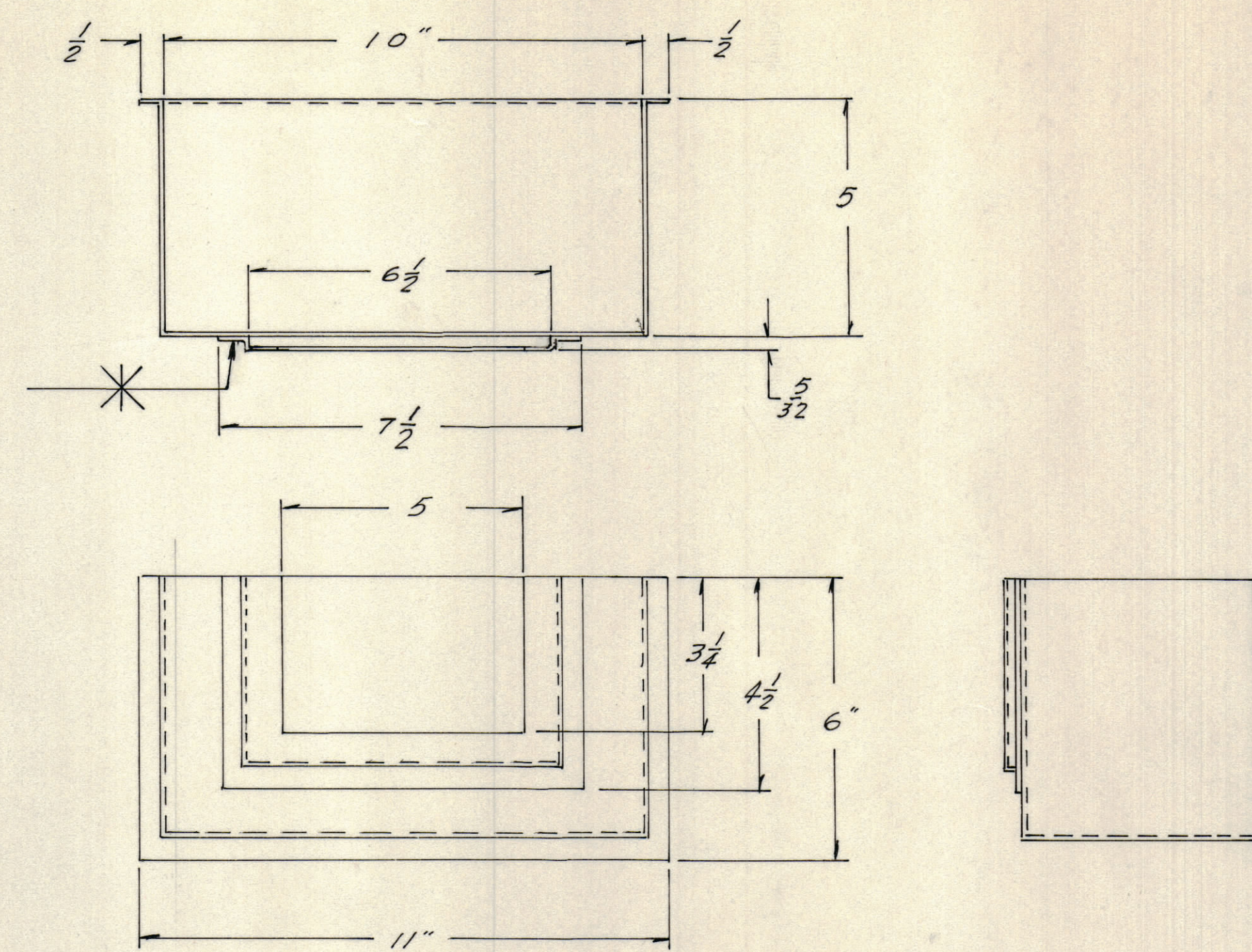
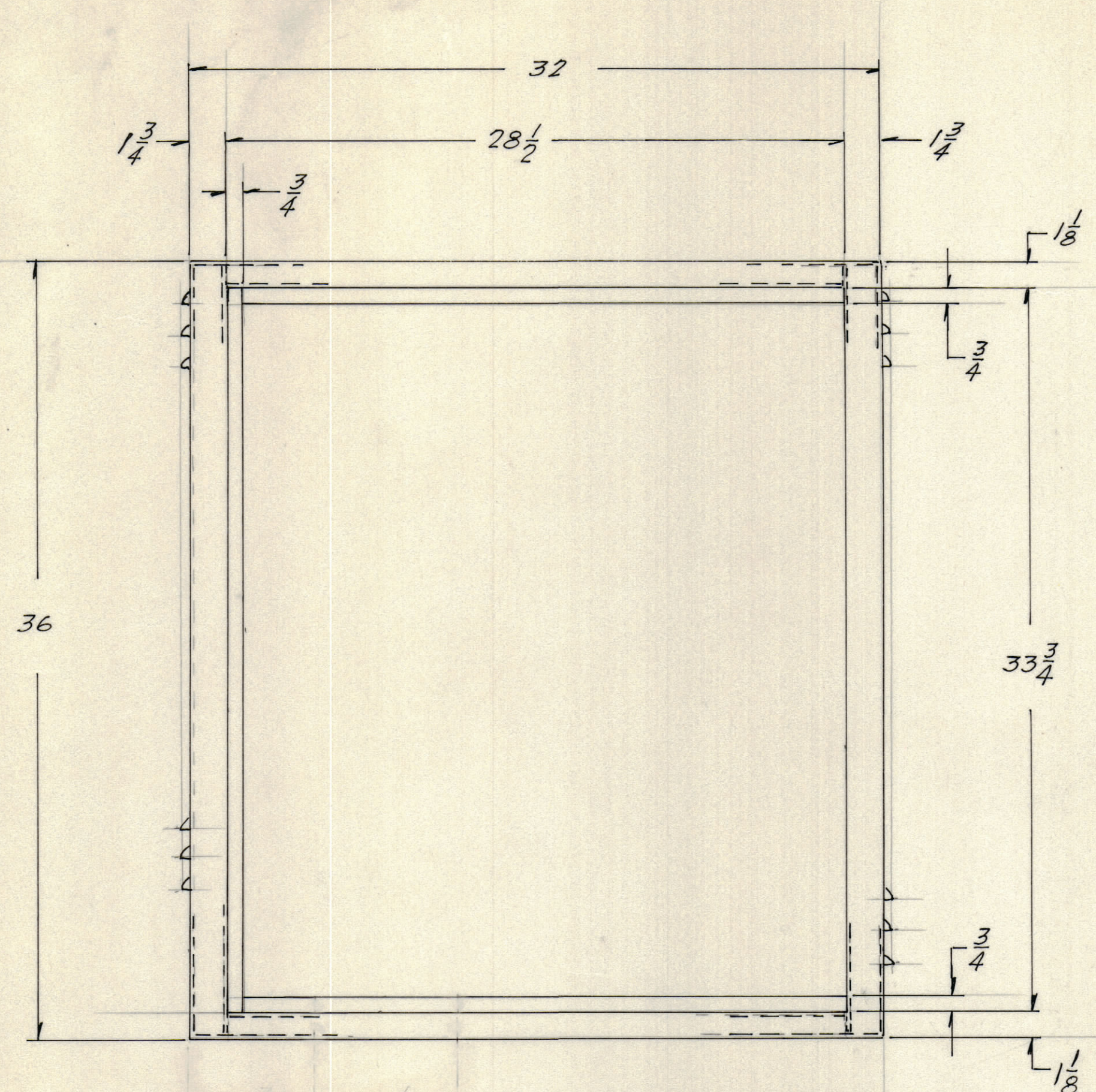
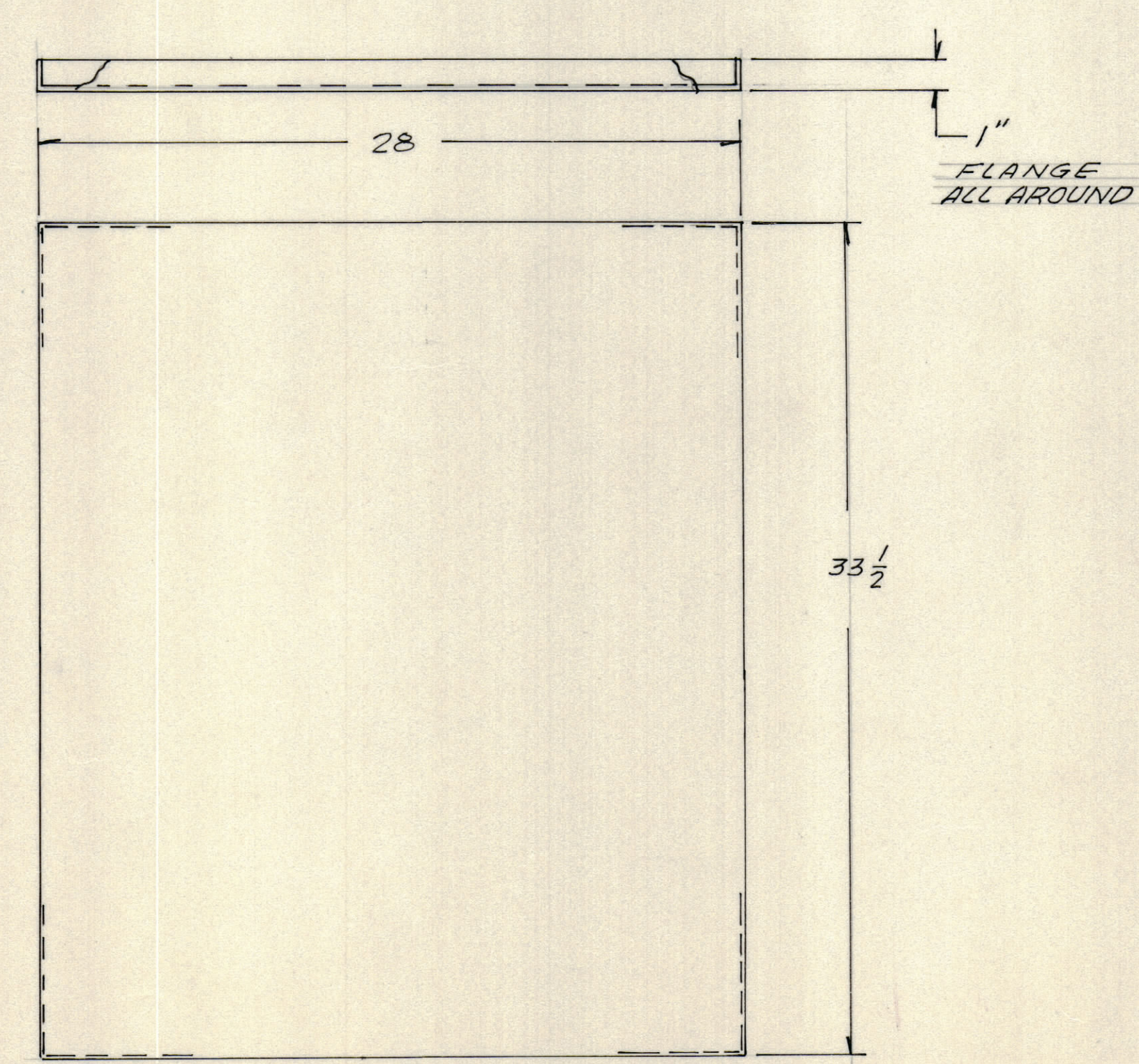


REVISIONS						
ZONE	LTR	DESCRIPTION	DATE	DRAFT	CHK'D	APPD



MANUAL / CARD HOLDER  
 .0596 (16 GA) C.R.S.

FRONT ELEVATION  
 (SHOWN WITH DOOR REMOVED)



DOOR  
 .105 (12 GA.) C.R. STL.

QTY REQ	QTY REQ	QTY REQ	ITEM	PART NO.	MANUFACTURER	DESCRIPTION	SYM.
PARTS LIST							

INTERPRET DRAWING PER LISTED DOCUMENTS		UNLESS OTHERWISE SPECIFIED DIMENSIONS ARE IN INCHES AND INCLUDE CHEMICALLY APPLIED OR PLATED FINISHES REMOVE ALL BURRS AND SHARP EDGES	
DIMENSIONING MIL - STD - 8 SURFACE ROUGHNESS MIL - STD - 10 ABBREVIATIONS MIL - STD - 12 ELECTRONIC SYMBOLS MIL - STD - 15 WELDING SYMBOLS JAN - STD - 19		TOLERANCES ON FRACTIONS ANGLES DECIMALS	
NEXT ASSY	USED ON	MATERIAL	
		SEE SH. 1	
APPLICATION		FINISH	

DRAWN	DATE
FRAMPTON	11-27-73
CHECKED	DATE
	11-28-73
D. ENG.	DATE
	12-7-73
P. ENG.	DATE
ESF	12-10-73
P. MGR.	DATE
CHIEF, ENG. DEPT.	DATE
	12-11-73

THE TMC SYSTEMS AND POWER CORPORATION SPRINGFIELD, VIRGINIA			
CONTROL CABINET FABRICATION DETAILS			
SIZE	CODE IDENT NO	DWG. NO.	REV
D	24146	MS6177	
SCALE 3/16		SHEET 2 OF 4	

NOTICE TO PERSONS RECEIVING THIS DRAWING  
 THE TMC SYSTEMS AND POWER CORPORATION claims proprietary right in the material disclosed hereon. This drawing is issued in confidence for engineering information only and may not be reproduced or used to manufacture anything shown hereon without permission from THE TMC SYSTEMS AND POWER CORPORATION to the user. This drawing is loaned for mutual assistance and is subject to recall at any time.