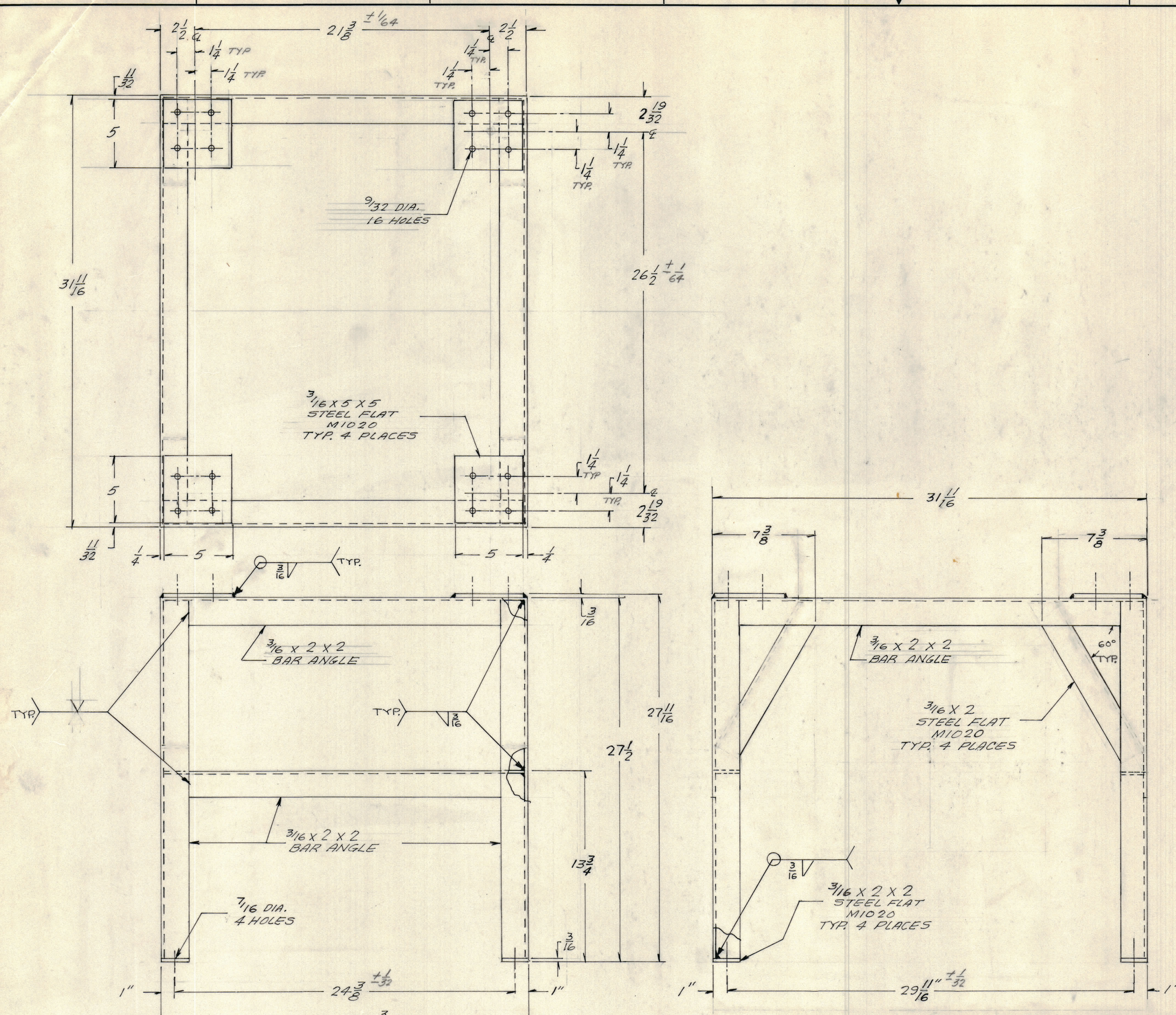


REVISIONS					
ZONE	LTR	DESCRIPTION	DATE	DRAFT	CHK'D



- NOTES:
1. WELD ALL JOINTS IN ACCORDANCE WITH AWS STANDARDS FOR WELDING.
 2. ALL WELDS TO BE PROPERLY CLEANED.
 3. ALL SURFACE WELDS TO BE GROUND SMOOTH.
 4. CLEAN, PRIME & PAINT IN ACCORDANCE WITH TMC SPEC. P4000

QTY REQ	QTY REQ	QTY REQ	ITEM	PART NO.	MANUFACTURER	DESCRIPTION	SYM
PARTS LIST							
						THE TMC SYSTEMS AND POWER CORPORATION	
						SPRINGFIELD, VIRGINIA	
						50KW ENGINE-GENERATOR SET	
						CONTROL CABINET	
						SUPPORT SADDLE	
						SIZE	REV
						D 24146	MS6179
						SCALE 1/4	SHEET 1 OF 1

INTERPRET DRAWING PER LISTED DOCUMENTS

UNLESS OTHERWISE SPECIFIED DIMENSIONS ARE IN INCHES AND INCLUDE CHEMICALLY APPLIED OR PLATED FINISHES REMOVE ALL BURRS AND SHARP EDGES

TOLERANCES ON FRACTIONS ANGLES DECIMALS

±1/16 1/2°

MATERIAL AS NOTED

FINISH SEE NOTE 4

NOTICE TO PERSONS RECEIVING THIS DRAWING THE TMC SYSTEMS AND POWER CORPORATION claims proprietary right in the material disclosed hereon. This drawing is issued in confidence for engineering information only and may not be reproduced or used to manufacture anything shown hereon without permission from THE TMC SYSTEMS AND POWER CORPORATION to the user. This drawing loaned for mutual assistance and is subject to recall at any time.

DRAWN	DATE
FRAMPTON	12-4-73
CHECKED	DATE
	12-4-73
D. ENG.	DATE
MA	12-7-73
P. ENG.	DATE
ESF	12-10-73
P. MGR.	DATE
CHIEF, ENG. DEPT.	DATE
	12-11-73