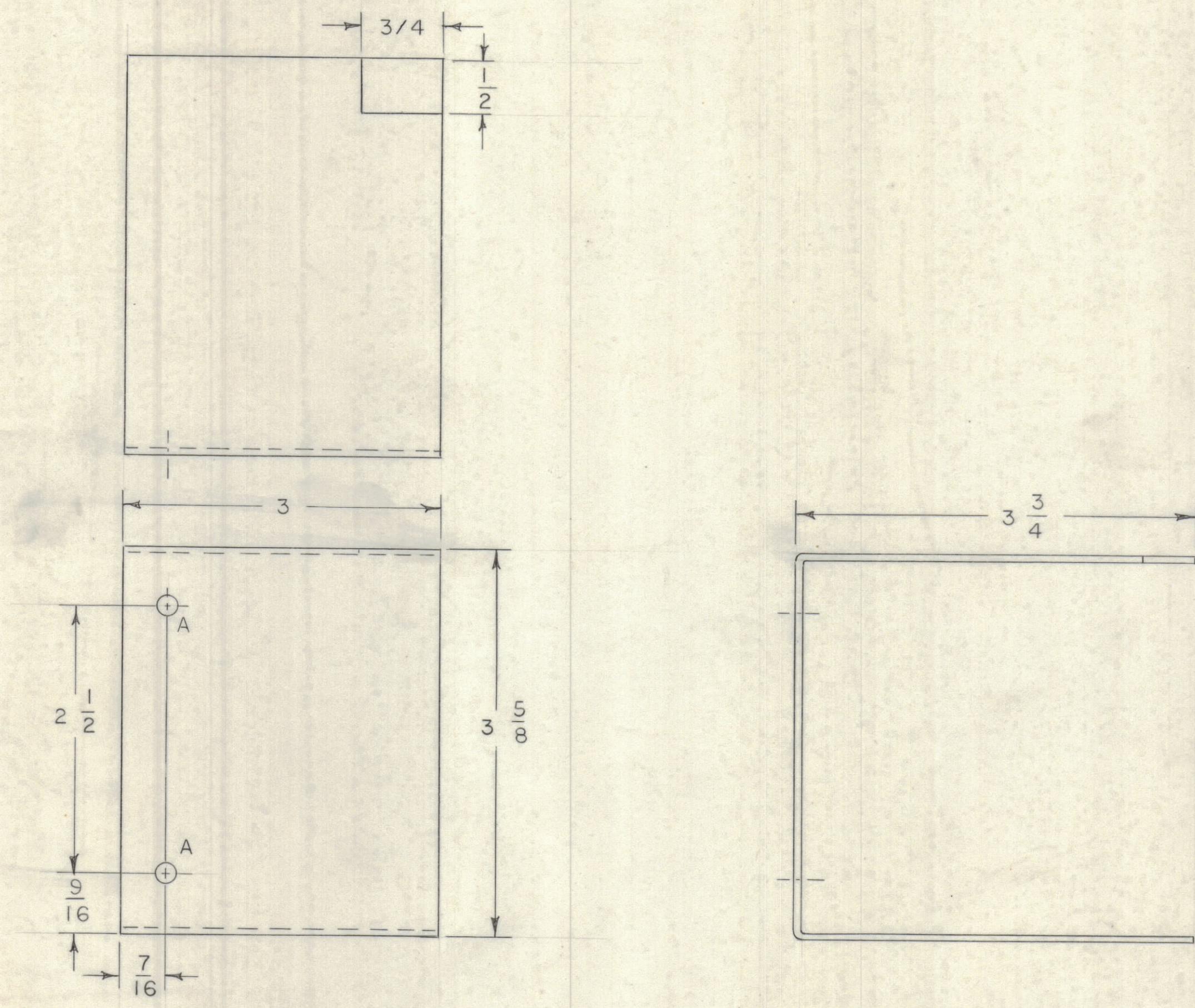


					REVISIONS		
E.M.N.NO	DRAFT	CHKD	ZONE	LTR	DESCRIPTION	DATE	APPROVED
	RF			X	EXP RELEASE	5-17-71	
	00			Ø	ORIGINAL RELEASE FOR PRODUCTION	10/14/71	



HOLE	DESCRIPTION	REQD
A	3/16 DIA	2

NOTES:

- UNLESS OTHERWISE SPECIFIED:
1. USE MATERIAL THICKNESS FOR MAXIMUM RADIUS ON ALL BENDS.
  2. ALL ANGULAR BENDS 90 DEGREES.
  3. REMOVE ALL BURRS AND SHARP EDGES.
  4. MOUNT INSERTS AFTER FINISHING.

I	TFP-1K	
QTY / UNIT	MODEL USED ON	ASS'Y NO.
APPLICATION		
	CODE	

**NOTICE TO PERSONS RECEIVING THIS DRAWING**  
 THE TECHNICAL MATERIEL CORPORATION claims proprietary right in the material disclosed hereon. This drawing is issued in confidence for engineering information only and may not be reproduced or used to manufacture anything shown hereon without permission from THE TECHNICAL MATERIEL CORPORATION to the user. This drawing is loaned for mutual assistance and is subject to recall at any time.

UNLESS OTHERWISE SPECIFIED DIMENSIONS ARE IN INCHES AND INCLUDE CHEMICALLY APPLIED OR PLATED FINISHES

**TOLERANCES ON**

DECIMALS	FRACTIONS
.X ± .05	± 1/64
.XX ± .01	ANGLES
.XXX ± .005	± 0° -30'

MATERIAL .051 THK  
 ALUM 5052 H32

FINISH S404  
 YEL IRIDITE

QTY. REQ.	ITEM	PART NO.	DESCRIPTION	SYMBOL
F. BUDETTI LIST OF MATERIAL				
FINAL APPROVAL		DATE	<b>THE TECHNICAL MATERIEL CORP.</b> MAMARONECK, NEW YORK	
MECH. DES.		DATE		
ELECT. DES.		DATE		
CHECKED		DATE		
DRAWN		DATE	COVER, SW	
SIZE	CODE	IDENT NO.	DWG NO.	ISSUE
C		82679	MS 6200	Ø
SCALE 1/1			SHEET 1 OF 1	

MS6200