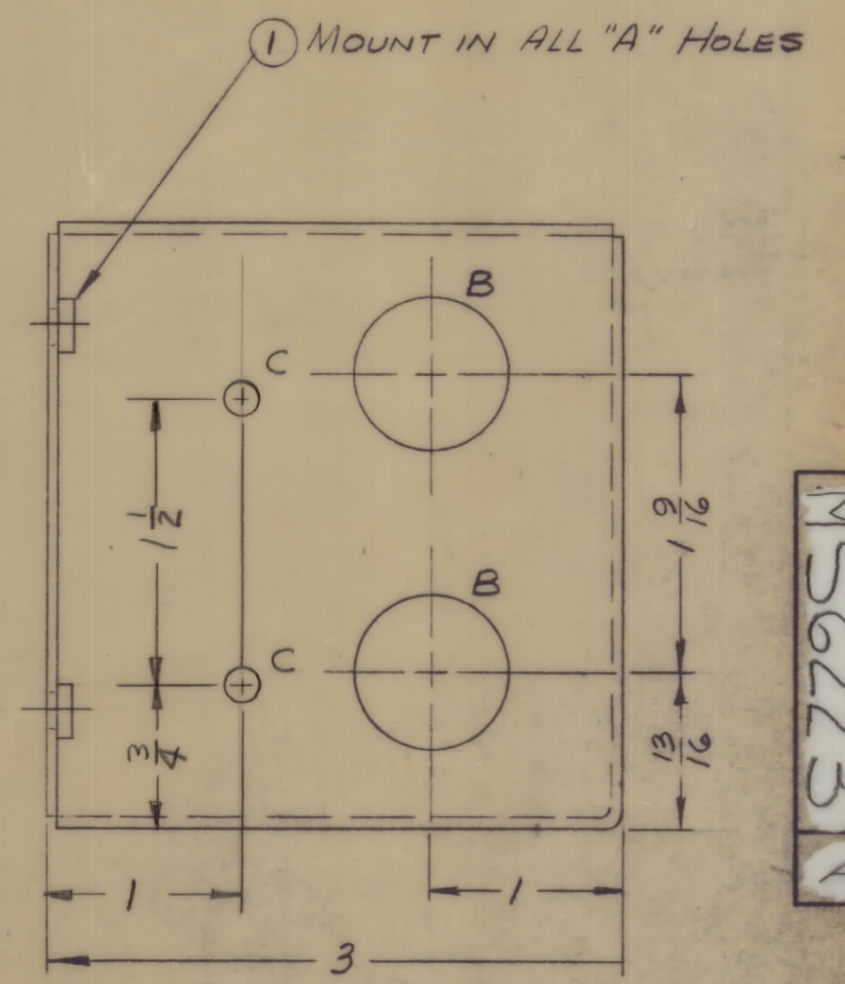
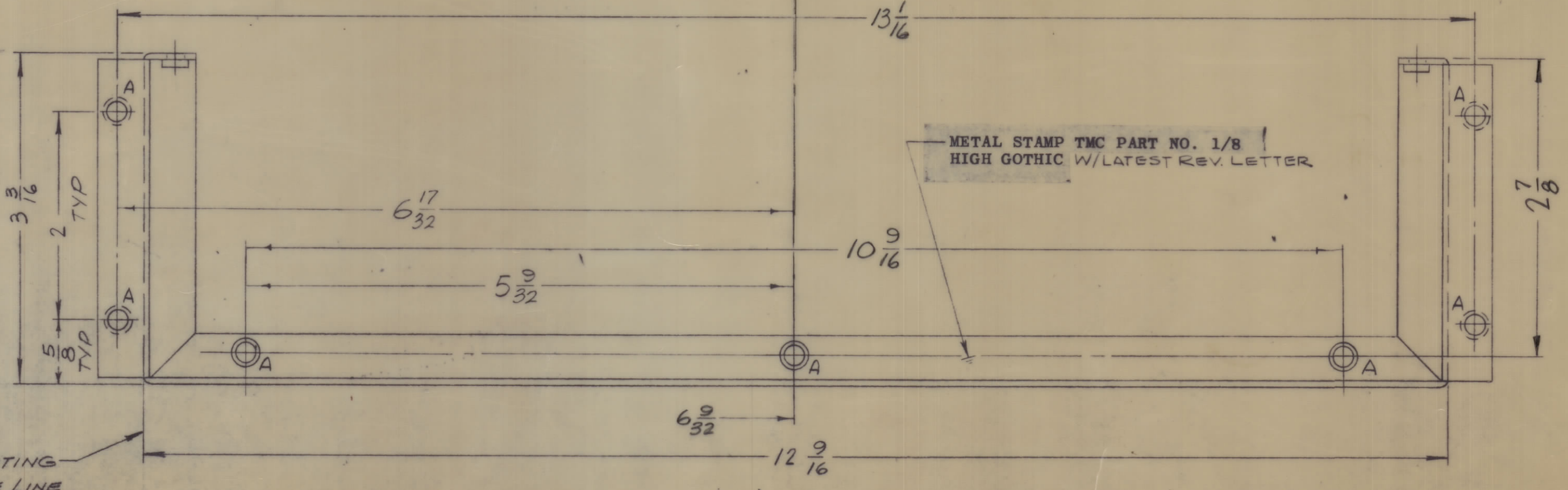
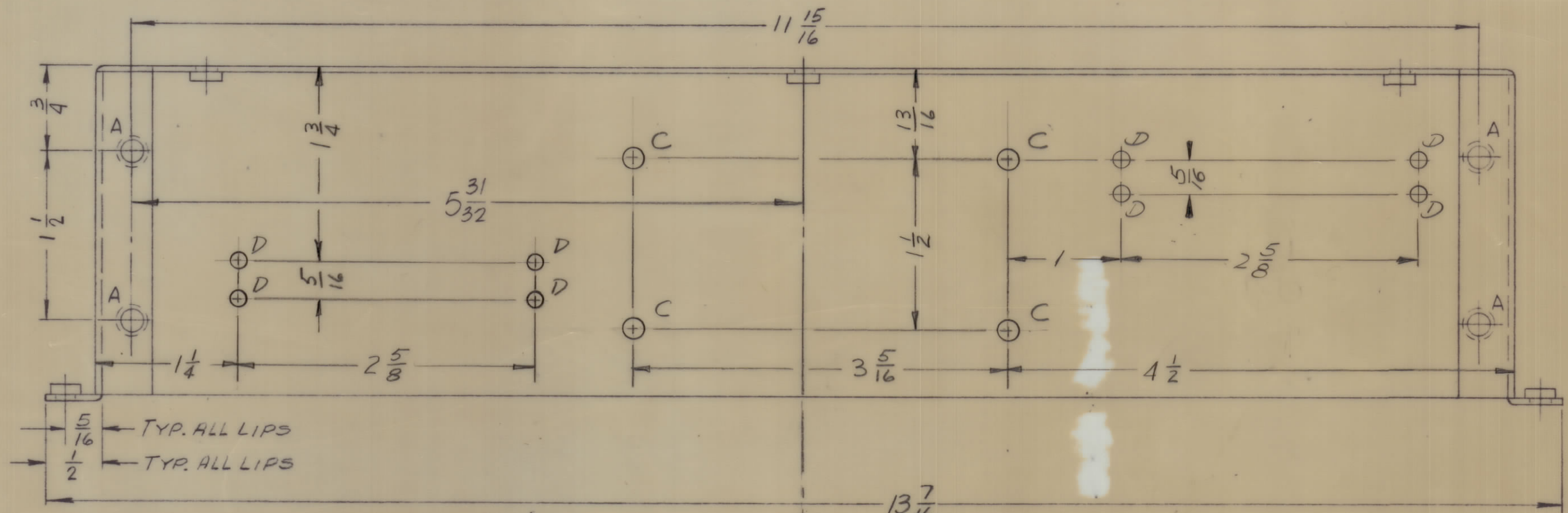


REVISIONS							
ZONE	SYM	DESCRIPTION	DATE	E.M.N. NO.	DRAFT	CHKD	APPD
	Ø	ORIGINAL RELEASE FOR PRODUCTION	9/3/71				
	A	ADD 4 'D' HOLES	1/12/72	20478	GE	CL	Ø



METAL STAMP TMC PART NO. 1/8  
HIGH GOTHIC W/LATEST REV. LETTER

LOCATING  
BASE LINE

OPPOSITE VIEW IDENTICAL  
C HOLES THIS SIDE ONLY

HOLE	DESCRIPTION	REQ.
A	.191-.194 DIA	11
B	13/16 DIA.	4
C	11/64 DIA	6
D	9/64 DIA	8

- UNLESS OTHERWISE SPECIFIED:
1. USE MATERIAL THICKNESS FOR MAXIMUM RADIUS ON ALL BENDS
  2. ALL ANGULAR BENDS 90 DEGREES
  3. REMOVE ALL BURRS AND SHARP EDGES
  4. MOUNT INSERTS AFTER FINISHING

Q'TY./UNIT	MODEL USED ON	ASS'Y. NO.
1	SYM 1203	AX5138
1	SYM 1202	AX5135

REF: LD 2479

(MODIF. MS 4383)

REQ'D.	ITEM	PART NUMBER	DESCRIPTION	SYMBOL
11	1	NT129-0632-4	NUT, ROUND, SWAGE TYPE	

LIST OF MATERIAL

MATERIAL .064 ALUMINUM 5052-H32	TITLE CHASSIS
FINISH 5404 YEL. IRIDITE	

THE TECHNICAL MATERIEL CORP.  
MAMARONECK, NEW YORK

DRAWN	DATE	FINAL APPROVAL	DATE
	23 J 71		
CHECKED	DATE		
	18 Aug 71		
ELECT. DES.	DATE		
MECH. DES.	DATE		
	23 J 71		

UNLESS OTHERWISE SPECIFIED  
DIMENSIONS ARE IN INCHES AND INCLUDE  
CHEMICALLY APPLIED OR PLATED FINISHES

DECIMALS	FRACTIONS
X ± .05	± 1/84
.XX ± .01	ANGLES
.XXX ± .005	± 0° 30'

MS6223 A

NOTES

THE CONTENTS OF THIS DRAWING ARE THE EXCLUSIVE PROPERTY  
OF THE TECHNICAL MATERIEL CORP. ITS UNAUTHORIZED USE OR  
REPRODUCTION IN WHOLE OR IN PART IS STRICTLY FORBIDDEN.