

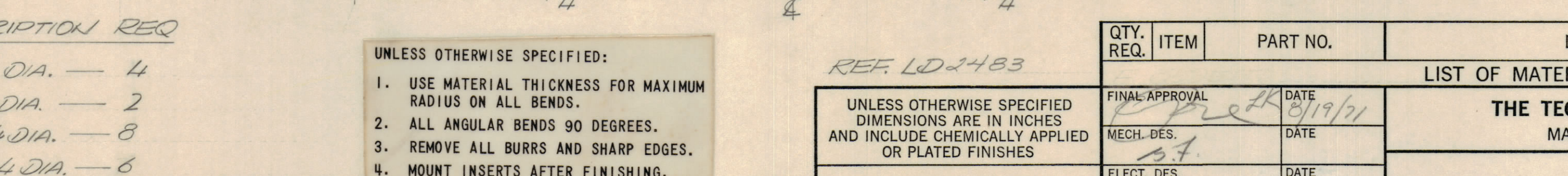
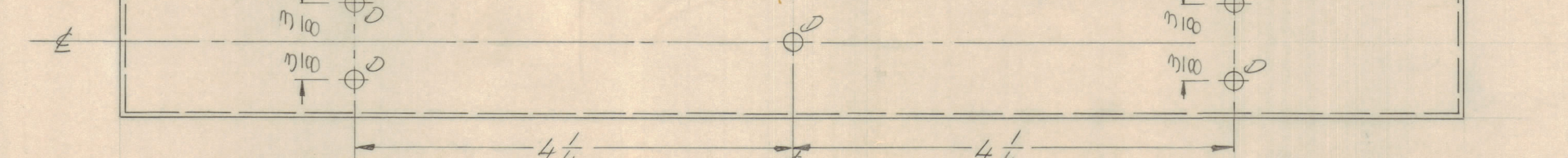
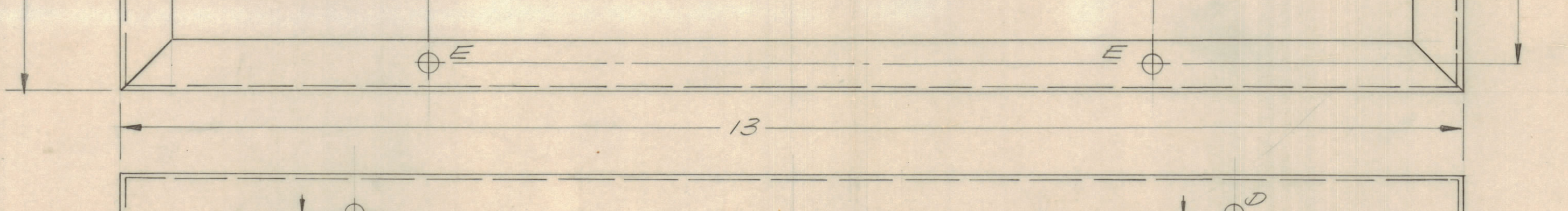
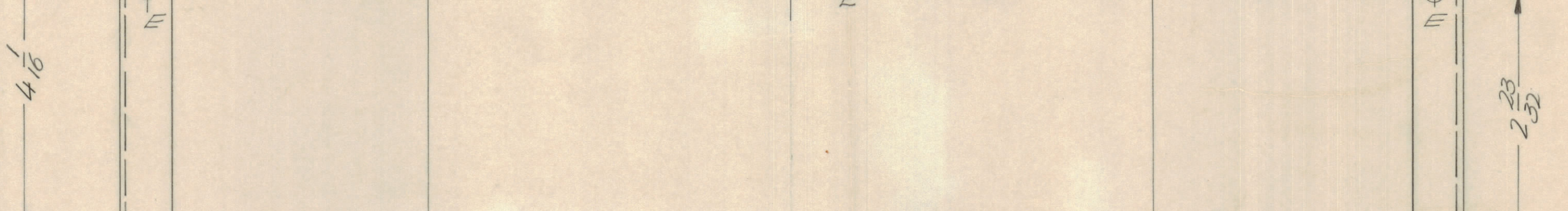
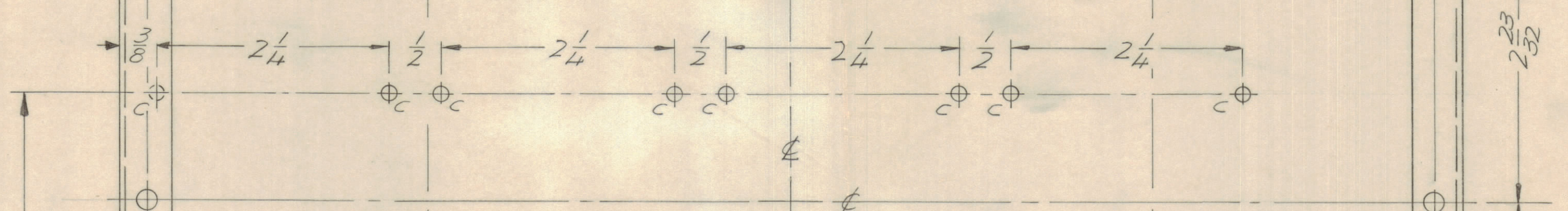
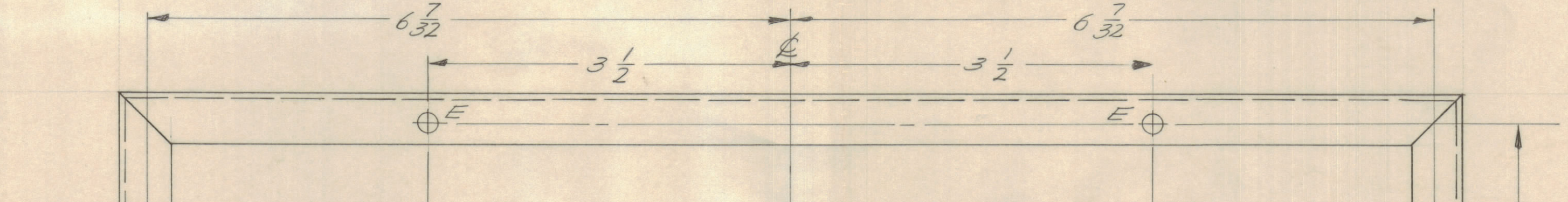
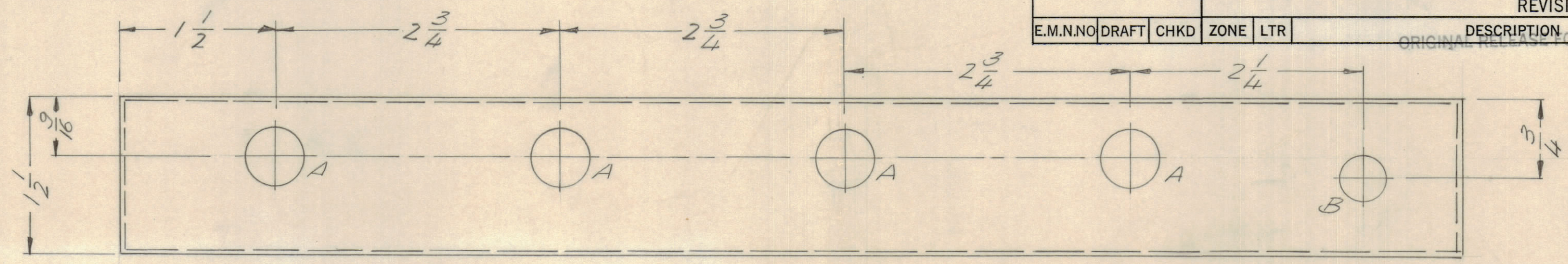
4

3

2

1

REVISIONS				DATE	APPROVED
E.M.N.NO	DRAFT	CHKD	ZONE	LTR	DESCRIPTION
					ORIGINAL RELEASE FOR PRODUCTION



HOLE DESCRIPTION REQ

- A — 9/16 DIA. — 4
- B — 7/16 DIA. — 2
- C — 3/64 DIA. — 8
- D — 11/64 DIA. — 6
- E — 3/16 — 6

UNLESS OTHERWISE SPECIFIED:

1. USE MATERIAL THICKNESS FOR MAXIMUM RADIUS ON ALL BENDS.
2. ALL ANGULAR BENDS 90 DEGREES.
3. REMOVE ALL BURRS AND SHARP EDGES.
4. MOUNT INSERTS AFTER FINISHING.

REF. LD 2483

UNLESS OTHERWISE SPECIFIED DIMENSIONS ARE IN INCHES AND INCLUDE CHEMICALLY APPLIED OR PLATED FINISHES

TOLERANCES ON

DECIMALS	FRACTIONS
.X ± .05	± 1/64
.XX ± .01	ANGLES
.XXX ± .005	± 0° -30'

MATERIAL .064 ALUM.
5052 H32
FINISH S404
YELLOW IRIDITE

QTY. REQ.	ITEM	PART NO.	DESCRIPTION	SYMBOL
LIST OF MATERIAL				
THE TECHNICAL MATERIEL CORP. MAMARONECK, NEW YORK				
CHASSIS, ANTENNA, INTERFACE				
FINAL APPROVAL <i>[Signature]</i>		DATE 8/19/71		
MECH. DES. <i>[Signature]</i>		DATE		
ELECT. DES.		DATE		
CHECKED		DATE		
DRAWN GE		DATE 17/8/71		
SIZE	CODE	IDENT NO.	DWG NO.	ISSUE
C	82679		MS 6228	Ø
SCALE 1:1				SHEET OF

1	HFD-3	
QTY / UNIT	MODEL USED ON	ASS'Y NO.
APPLICATION		
CODE		
NOTICE TO PERSONS RECEIVING THIS DRAWING		
THE TECHNICAL MATERIEL CORPORATION claims proprietary right in the material disclosed hereon. This drawing is issued in confidence for engineering information only and may not be reproduced or used to manufacture anything shown hereon without permission from THE TECHNICAL MATERIEL CORPORATION to the user. This drawing is loaned for mutual assistance and is subject to recall at any time.		

4

3

2

1