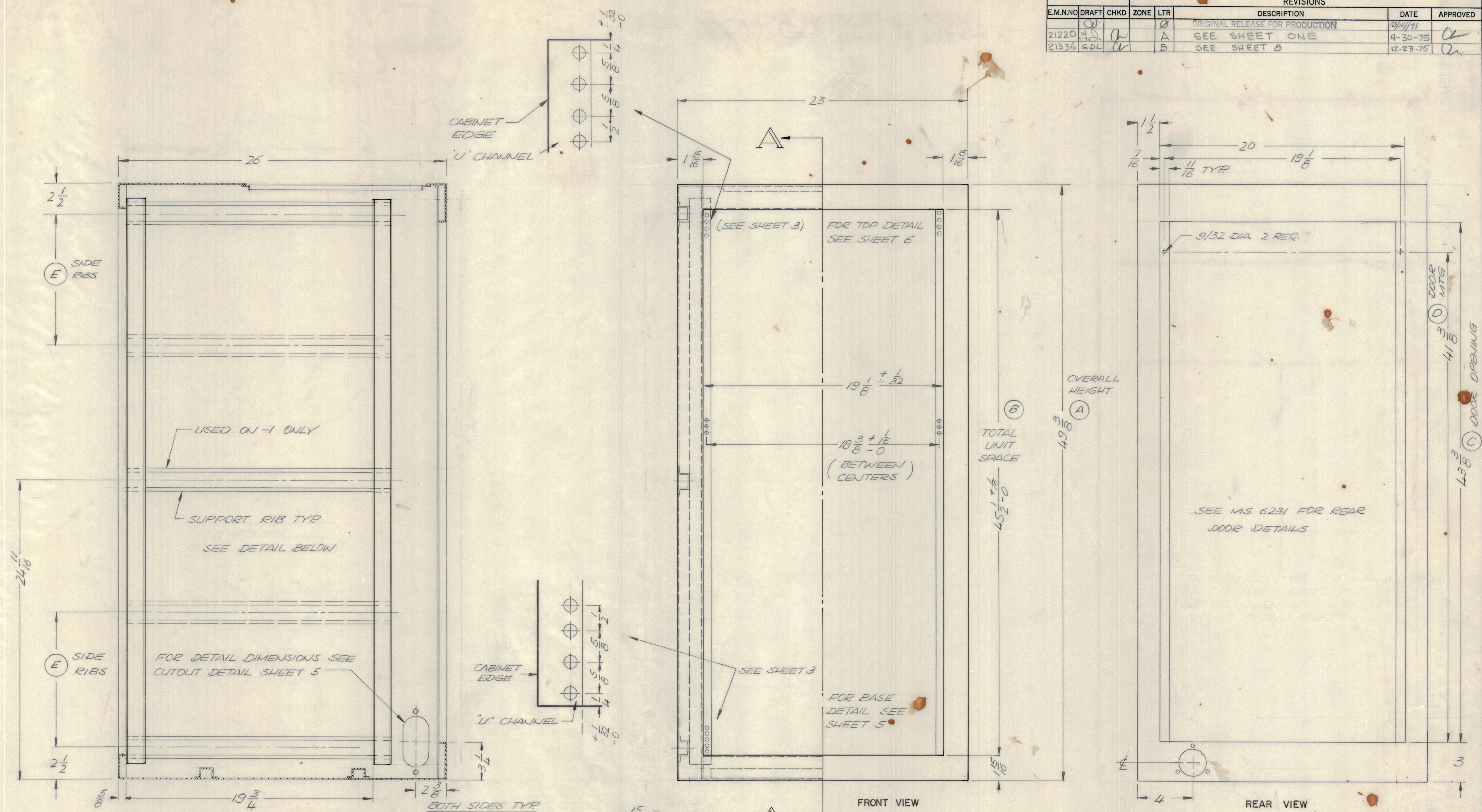
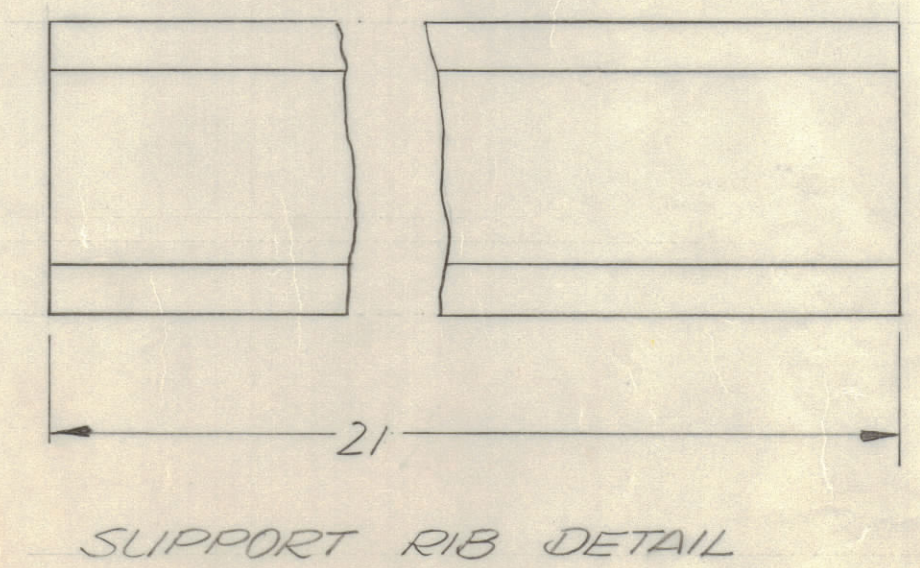


REVISIONS						
E.M.N.O.	DRAFT	CHKD	ZONE	LTR	DESCRIPTION	DATE
21220	W.D.			A	ORIGINAL RELEASE FOR PRODUCTION	10/11/71
21336	G.D.L.			B	SEE SHEET ONE	4-30-75
					SEE SHEET 8	12-23-75



DIMENSIONS GIVEN FOR REFERENCE USE SPOTWELD CONSTRUCTION



QTY / UNIT	MODEL USED ON	ASS'Y NO.
	CAB-40, 50, 60	
APPLICATION		
	CODE	

NOTICE TO PERSONS RECEIVING THIS DRAWING  
 THE TECHNICAL MATERIEL CORPORATION claims proprietary right in the material disclosed hereon. This drawing is issued in confidence for engineering information only and may not be reproduced or used to manufacture anything shown hereon without permission from THE TECHNICAL MATERIEL CORPORATION to the user. This drawing is loaned for mutual assistance and is subject to recall at any time.

QTY. REQ.	ITEM	PART NO.	DESCRIPTION	SYMBOL
	F. BUDETTI LIST OF MATERIAL			
	FINAL APPROVAL	DATE	THE TECHNICAL MATERIEL CORP.	
	MECH. DES.	DATE	MAMARONECK, NEW YORK	
	ELECT. DES.	DATE	CABINET, ELECTRICAL EQUIP	
	CHECKED	DATE		
	DRAWN	DATE		
	MATERIAL		SIZE	CODE IDENT NO. DWG NO.
	SEE SHEET 1		D 82679	MS 6230
	FINISH		SCALE	ISSUE
	SEE SHEET 1		N.T.S.	B

QTY. REQ.	ITEM	PART NO.	DESCRIPTION	SYMBOL
	F. BUDETTI LIST OF MATERIAL			
	FINAL APPROVAL	DATE	THE TECHNICAL MATERIEL CORP.	
	MECH. DES.	DATE	MAMARONECK, NEW YORK	
	ELECT. DES.	DATE	CABINET, ELECTRICAL EQUIP	
	CHECKED	DATE		
	DRAWN	DATE		
	MATERIAL		SIZE	CODE IDENT NO. DWG NO.
	SEE SHEET 1		D 82679	MS 6230
	FINISH		SCALE	ISSUE
	SEE SHEET 1		N.T.S.	B