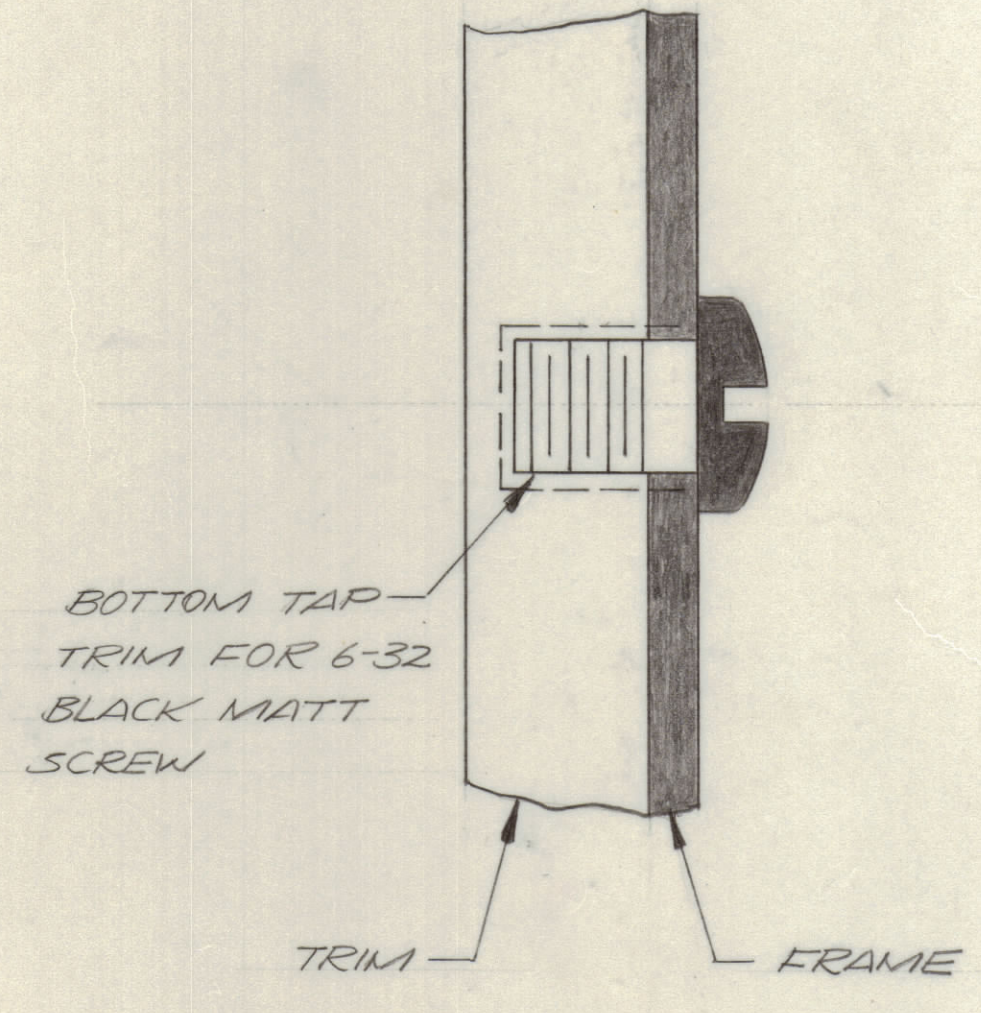
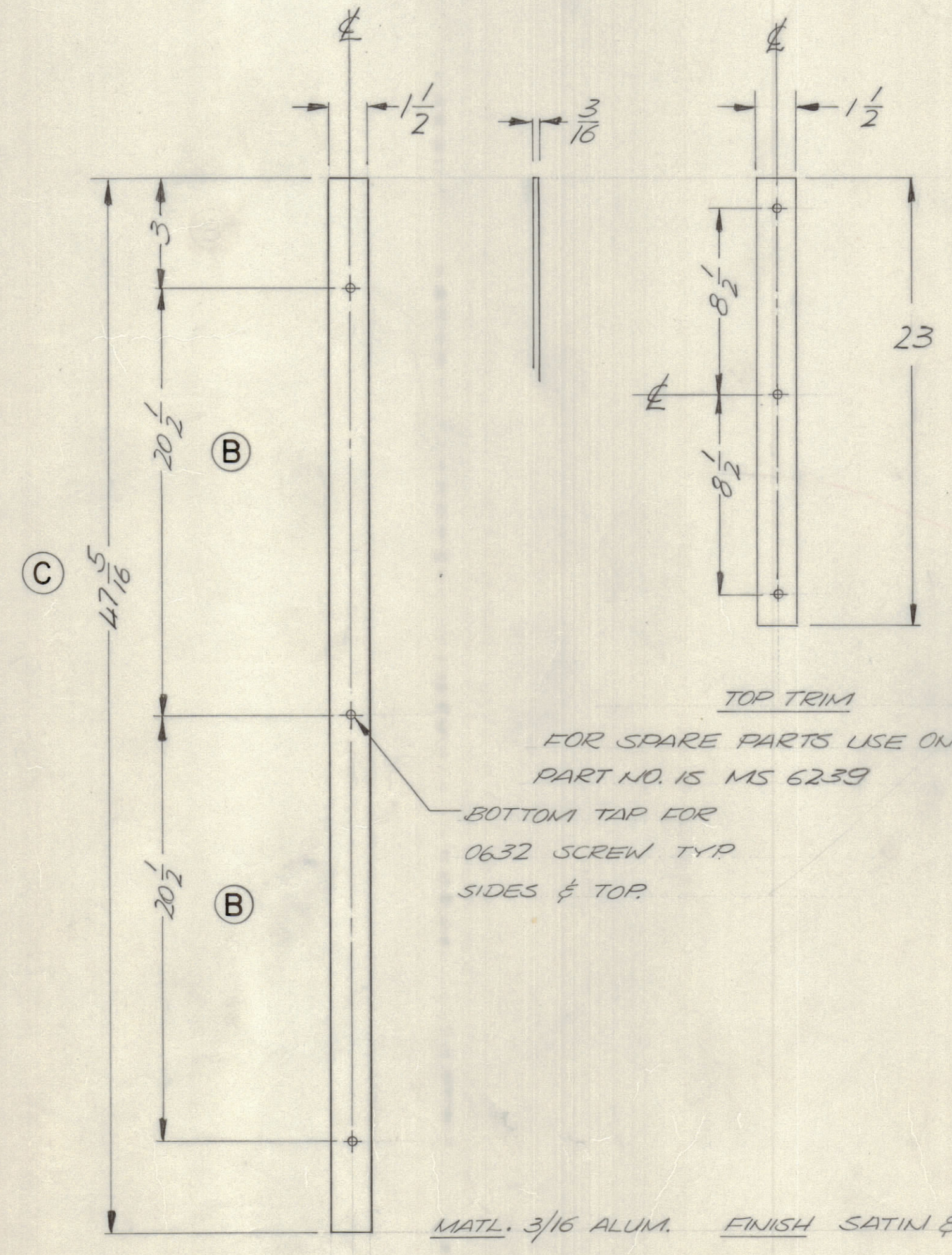
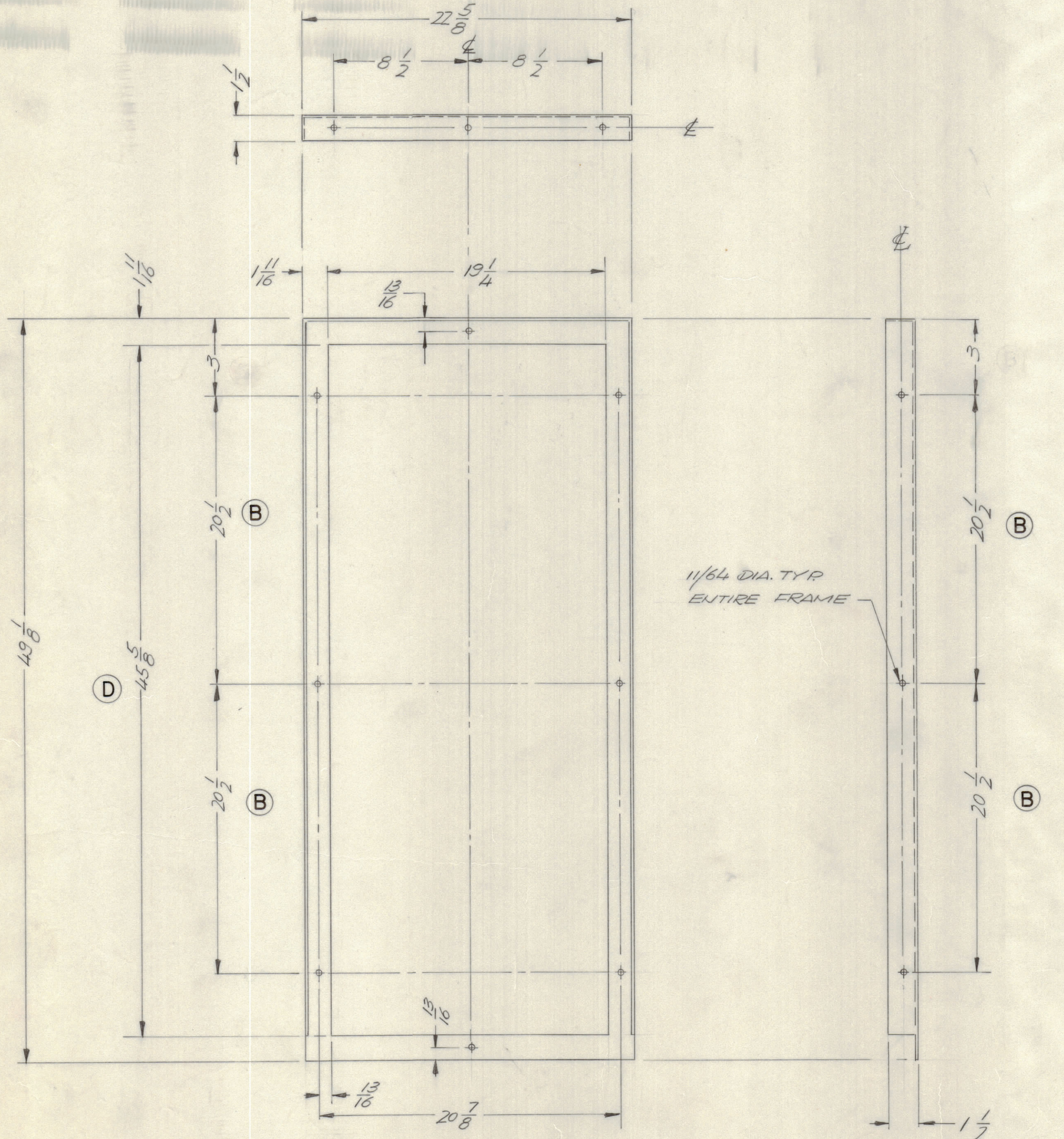
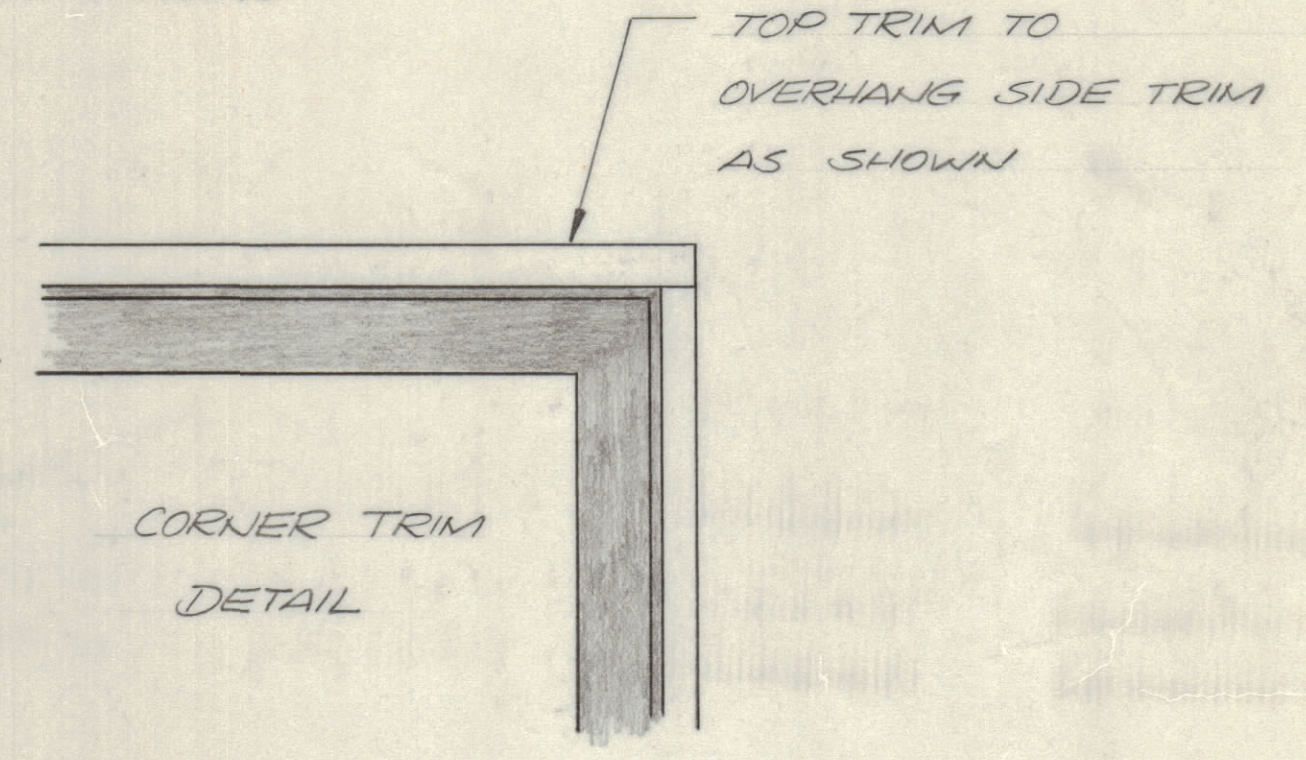


CABINET	FRAME HEIGHT (A)	(B)	TRIM HEIGHT (C)	(D)
MS 6230 -1	49 1/8	20 1/2	47 5/16	45 5/8
MS 6230 -2	61 3/8	26 5/8	59 9/16	57 7/8
MS 6230 -3	73 5/8	32 3/4	71 13/16	70 1/8

REVISIONS							
E.M.N.NO	DRAFT	CHKD	ZONE	LTR	DESCRIPTION	DATE	APPROVED
	(1)				ORIGINAL RELEASE FOR PRODUCTION	10/14/71	
21220				A	SEE SHEET ONE	11-30-75	
21336	G.O.L.			B	SEE SHEET 3	12-13-75	

NOTE

- ALL HEIGHT DIMENSIONS SHOWN FOR MS 6230-1. SEE CHART FOR VARYING DIMENSIONS FOR OTHER CABINETS
- WHEN MOUNTING BLACK MATTE FRAME TO CABINET FRONT, ASSEMBLE TRIM TO FRAME & USE FRAME AS TEMPLATE ON CABINET, MARK, THEN DRILL & TAP HOLES FOR 0632 SCREWS
- TRIM IS OPTIONAL. WHEN ORDERING CABINET SPECIFY WITH OR WITHOUT TRIM.



BLACK MATTE FRAME -1 SHOWN  
FOR SPARE PARTS USE ONLY  
PART NO. IS MS 6237

1/16 DIA. TYP  
ENTIRE FRAME  
MATERIAL: 1/16 STEEL

SIDE TRIM TYP BOTH SIDES  
FOR SPARE PARTS USE ONLY  
PART NO. IS MS 6238

UNLESS OTHERWISE SPECIFIED  
DIMENSIONS ARE IN INCHES  
AND INCLUDE CHEMICALLY APPLIED  
OR PLATED FINISHES

TOLERANCES ON  
DECIMALS FRACTIONS  
X ± .05 ± 1/64  
XX ± .01 ANGLES  
XXX ± .005 = 0°-30°

QTY. REQ.	ITEM	PART NO.	DESCRIPTION	SYMBOL
E. BUDETTI LIST OF MATERIAL				
FINAL APPROVAL		DATE	THE TECHNICAL MATERIEL CORP.	
MECH. DES.		DATE	MAMARONECK, NEW YORK	
ELECT. DES.		DATE	(optional) TRIM DETAILS	
CHECKED		DATE	CABINET, ELECTRICAL EQUIP	
DRAWN		DATE	SIZE CODE IDENT NO. DWG NO. ISSUE	
		3/22/71	D 82679 MS 6230 B	
			SCALE NTS SHEET 7 OF 8	

NOTICE TO PERSONS RECEIVING THIS DRAWING  
THE TECHNICAL MATERIEL CORPORATION claims proprietary right in the material disclosed hereon.  
This drawing is issued in confidence for engineering information only and may not be reproduced or used  
to manufacture anything shown hereon without permission from THE TECHNICAL MATERIEL CORPORATION  
to the user. This drawing is loaned for mutual assistance and is subject to recall at any time.