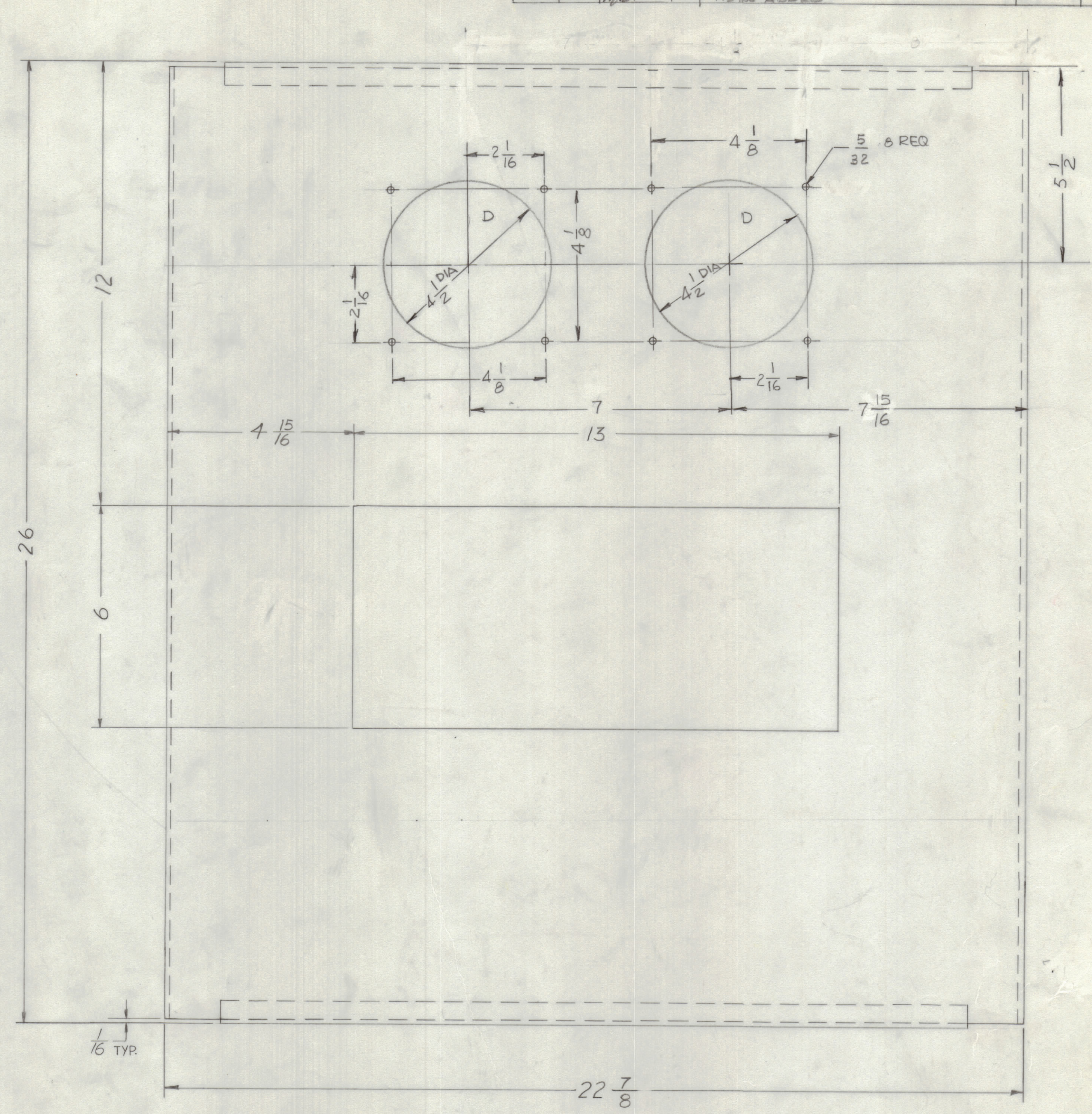
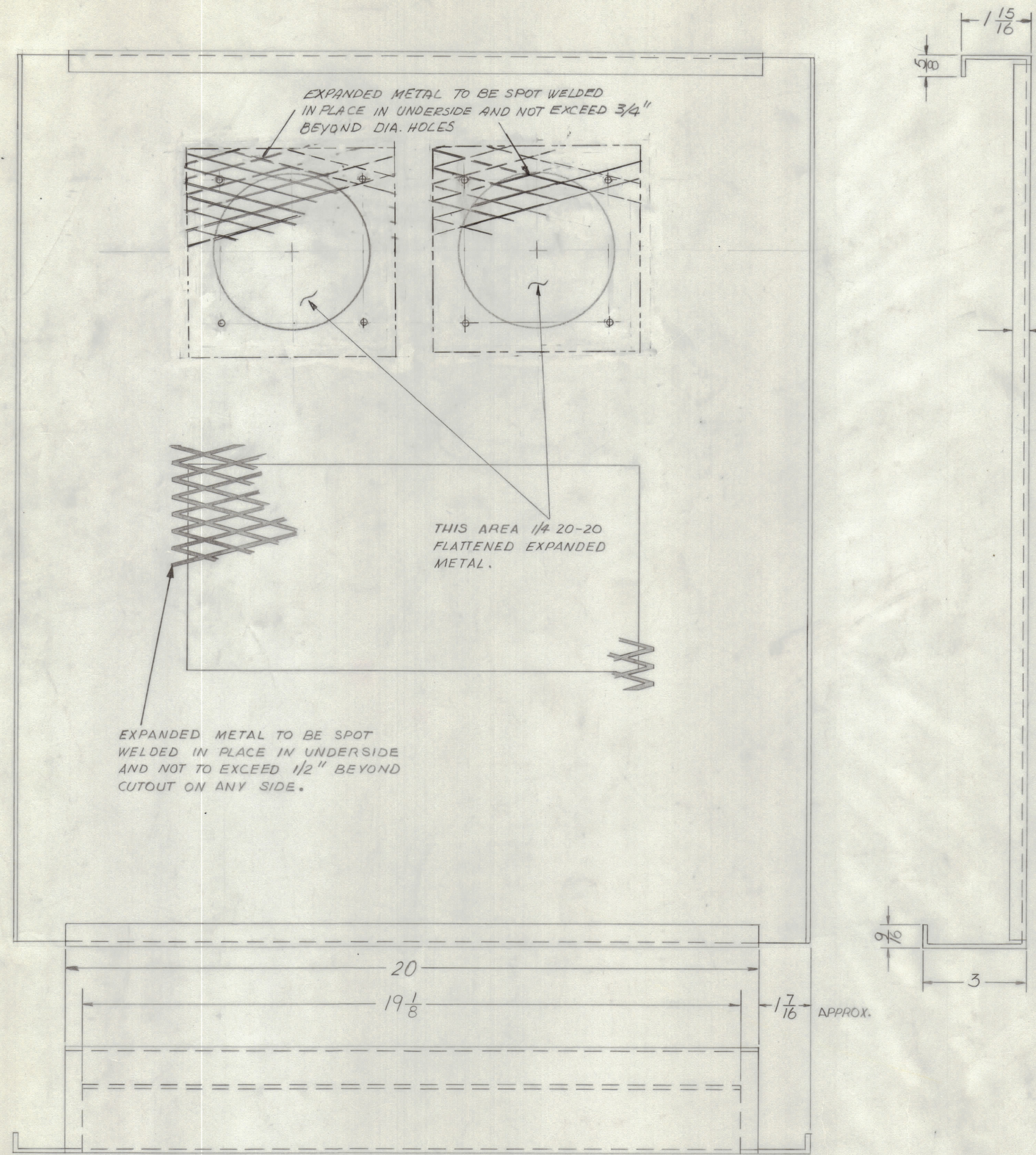


REVISIONS							
E.M.N.O	DRAFT	CHKD	ZONE	LTR	DESCRIPTION	DATE	APPROVED
21220	J.S.O.			A	SEE SHEET ONE	5-1-75	Cl
21336	G.D.L.			b	TWO 'D' HOLES & NOTE FOR EXPANDED METAL ADDED	12-23-75	Cl



CAB 40 S		
QTY / UNIT	MODEL USED ON	ASS'Y NO.
APPLICATION		
CODE		
<small>NOTICE TO PERSONS RECEIVING THIS DRAWING</small> <small>THE TECHNICAL MATERIEL CORPORATION claims proprietary right in the material disclosed hereon. This drawing is issued in confidence for engineering information only and may not be reproduced or used to manufacture anything shown hereon without permission from THE TECHNICAL MATERIEL CORPORATION to the user. This drawing is loaned for mutual assistance and is subject to recall at any time.</small>		

UNLESS OTHERWISE SPECIFIED DIMENSIONS ARE IN INCHES AND INCLUDE CHEMICALLY APPLIED OR PLATED FINISHES	
DECIMALS	FRACTIONS
.X ± .05	± 1/64
.XX ± .01	ANGLES
.XXX ± .005	± 0° -30'
MATERIAL	
SEE SHEET 1	
FINISH	
SEE SHEET 1	

QTY. REQ.	ITEM	PART NO.	DESCRIPTION	SYMBOL
LIST OF MATERIAL				
FINAL APPROVAL: <i>[Signature]</i> DATE: _____ MECH. DES. DATE: _____ ELECT. DES. DATE: _____ CHECKED: <i>G. Baker</i> DATE: 5-1-75 DRAWN: <i>John D.</i> DATE: 5-1-75				
THE TECHNICAL MATERIEL CORP. MAMARONECK, NEW YORK TOP ASSEMBLY CABINET, ELEC. EQUIP.				
SIZE	CODE	IDENT NO.	DWG NO.	ISSUE
D	82679	MS6230		B
SCALE NTS				SHEET 8 OF 8

B MS6230