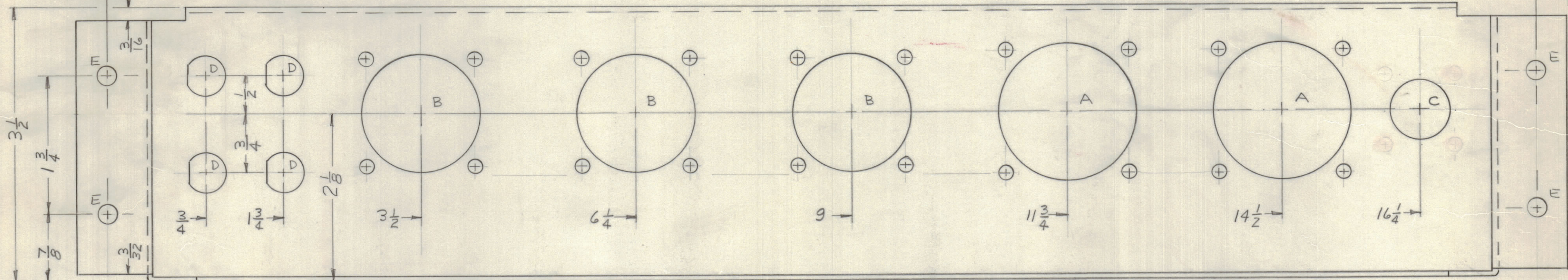
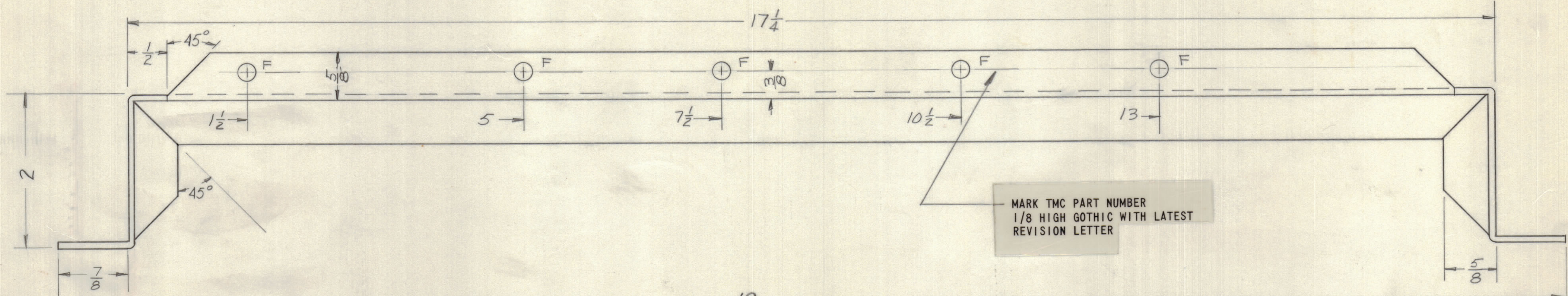
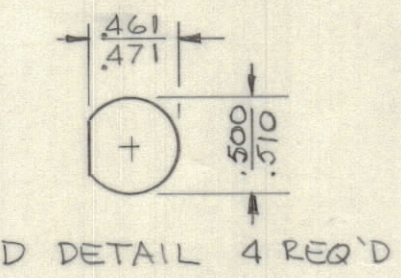


REVISIONS							
E.M.N.NO	DRAFT	CHKD	ZONE	LTR	DESCRIPTION	DATE	APPROVED
	00			Ø	ORIGINAL RELEASE FOR PRODUCTION	10/2/71	



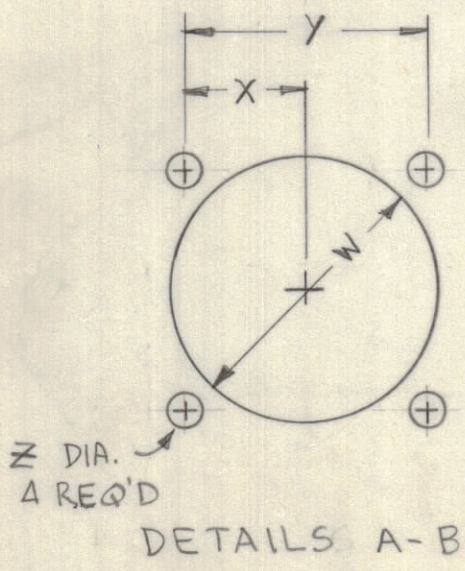
C ~ 3/4 DIA. 1 REQ'D
 E ~ 15/64 DIA. 4 REQ'D
 F ~ 13/64 DIA. 5 REQ'D

- UNLESS OTHERWISE SPECIFIED:
1. USE MATERIAL THICKNESS FOR MAXIMUM RADIUS ON ALL BENDS.
 2. ALL ANGULAR BENDS 90 DEGREES.
 3. REMOVE ALL BURRS AND SHARP EDGES.
 4. MOUNT INSERTS AFTER FINISHING.



REF: LD2485

DETAIL	W	X	Y	Z	REQ'D
A	1-13/16	25/32	1-9/16	11/64	2
B	1-9/16	11/16	1-3/8	11/64	3



QTY / UNIT	MODEL USED ON	ASS'Y NO.
1	HFTA-1KJ2	RAK138-1
APPLICATION		
CODE		
NOTICE TO PERSONS RECEIVING THIS DRAWING		
THE TECHNICAL MATERIEL CORPORATION claims proprietary right in the material disclosed herein. This drawing is issued in confidence for engineering information only and may not be reproduced or used to manufacture anything shown herein without permission from THE TECHNICAL MATERIEL CORPORATION to the user. This drawing is loaned for mutual assistance and is subject to recall at any time.		

UNLESS OTHERWISE SPECIFIED DIMENSIONS ARE IN INCHES AND INCLUDE CHEMICALLY APPLIED OR PLATED FINISHES

TOLERANCES ON

DECIMALS	FRACTIONS
.X ± .05	± 1/64
.XX ± .01	ANGLES
.XXX ± .005	± 0° -30'

MATERIAL .081 ALUM
5052-H32

FINISH
5404 YEL IRID

QTY. REQ.	ITEM	PART NO.	DESCRIPTION	SYMBOL
LIST OF MATERIAL				
FINAL APPROVAL <i>[Signature]</i> DATE 13 Oct 71				
MECH. DES. <i>[Signature]</i> DATE 13 Oct 71				
ELECT. DES. <i>[Signature]</i> DATE				
CHECKED DATE				
DRAWN <i>[Signature]</i> DATE 13 Sep 71				
THE TECHNICAL MATERIEL CORP. MAMARONECK, NEW YORK				
CHASSIS INTERFACE				
SIZE	CODE	IDENT NO.	DWG NO.	ISSUE
C	82679		MS 6243	Ø
SCALE				SHEET OF

MS6243