

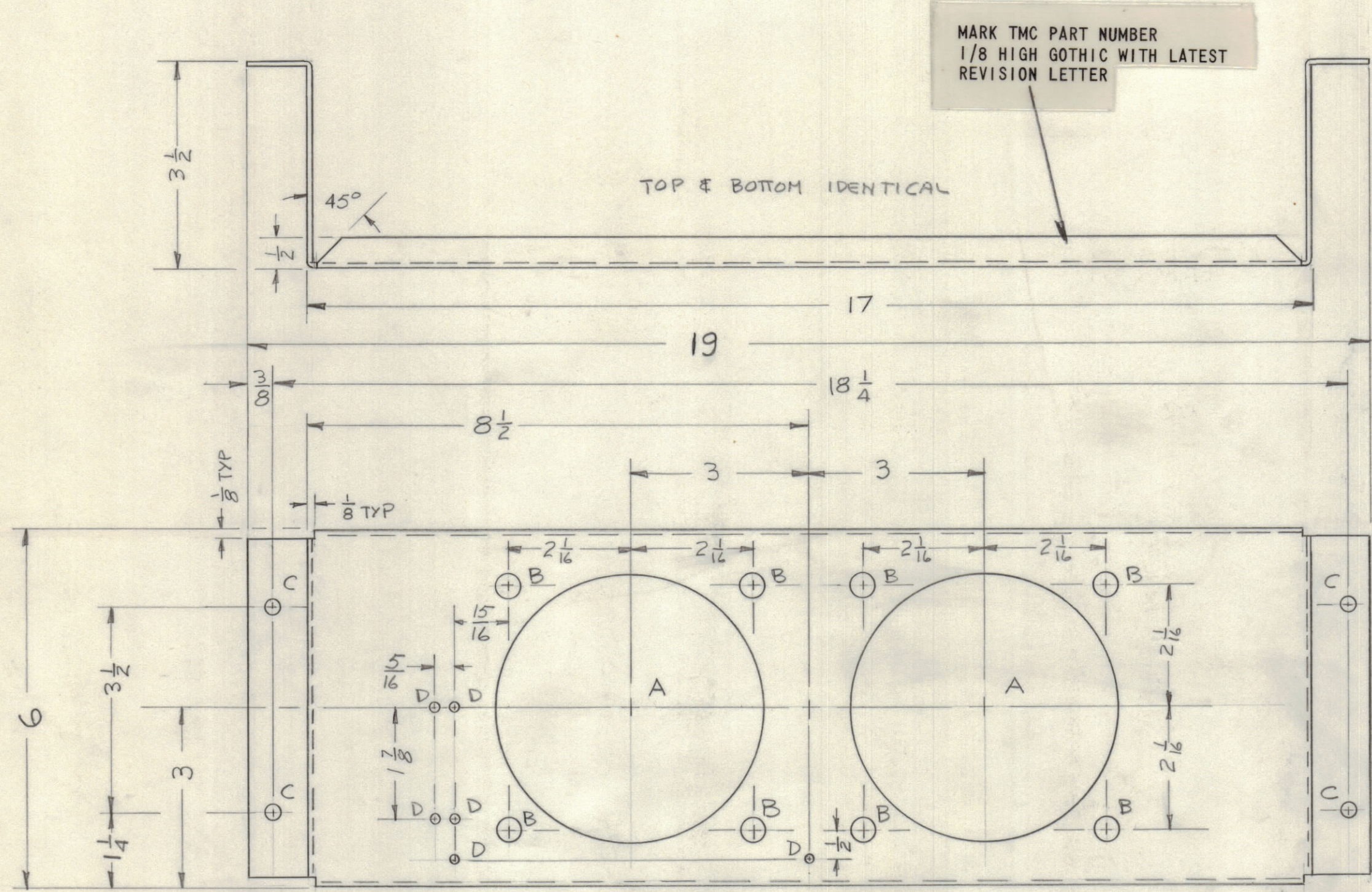
4

3

2

1

REVISIONS					DATE	APPROVED
E.M.N.NO	DRAFT	CHKD	ZONE	LTR	DESCRIPTION	
	W				ORIGINAL RELEASE FOR PRODUCTION	10/1/71



- A ~ 4 1/2 DIA. 2 REQ'D
- B ~ 3/16 DIA 8 REQ'D
- C ~ 5/16 DIA 4 REQ'D
- D ~ 5/32 DIA 6 REQ'D

UNLESS OTHERWISE SPECIFIED:

- USE MATERIAL THICKNESS FOR MAXIMUM RADIUS ON ALL BENDS.
- ALL ANGULAR BENDS 90 DEGREES.
- REMOVE ALL BURRS AND SHARP EDGES.
- MOUNT INSERTS AFTER FINISHING.

QTY / UNIT	SYM 1203, 1204	A4896
APPLICATION		
CODE		

NOTICE TO PERSONS RECEIVING THIS DRAWING  
 THE TECHNICAL MATERIEL CORPORATION claims proprietary right in the material disclosed hereon. This drawing is issued in confidence for engineering information only and may not be reproduced or used to manufacture anything shown hereon without permission from THE TECHNICAL MATERIEL CORPORATION to the user. This drawing is loaned for mutual assistance and is subject to recall at any time.

UNLESS OTHERWISE SPECIFIED DIMENSIONS ARE IN INCHES AND INCLUDE CHEMICALLY APPLIED OR PLATED FINISHES

TOLERANCES ON  
 DECIMALS .X ± .05  
 .XX ± .01  
 .XXX ± .005  
 FRACTIONS ± 1/64  
 ANGLES ± 0° -30'

MATERIAL .081 ALUM  
 5052-H32

FINISH  
 S404 YEL IRID

QTY. REQ.	ITEM	PART NO.	DESCRIPTION	SYMBOL
LIST OF MATERIAL				
FINAL APPROVAL <i>[Signature]</i> DATE 18 Oct 71 MECH. DES. <i>[Signature]</i> DATE 19 Oct 71 ELECT. DES. DATE CHECKED DATE DRAWN <i>[Signature]</i> DATE 4 Oct 71				
THE TECHNICAL MATERIEL CORP. MAMARONECK, NEW YORK PANEL, BLOWER MTG				
SIZE	CODE	IDENT NO.	DWG NO.	ISSUE
C	82679		MS6246	1
SCALE			SHEET	OF

4

3

2

1

MS6246