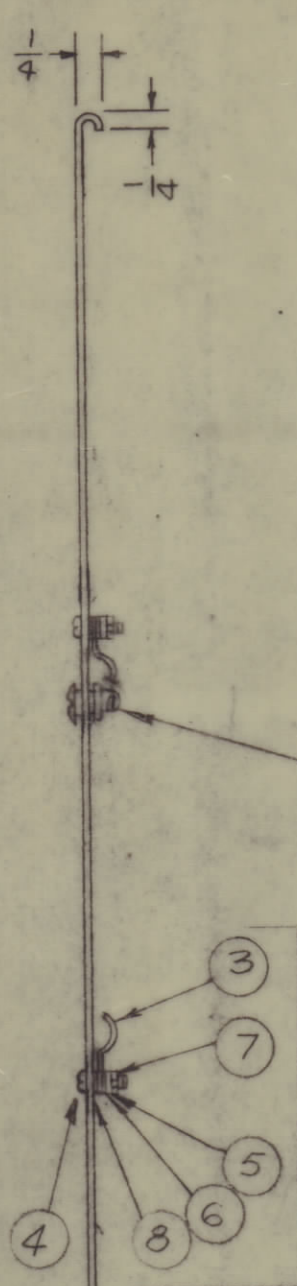
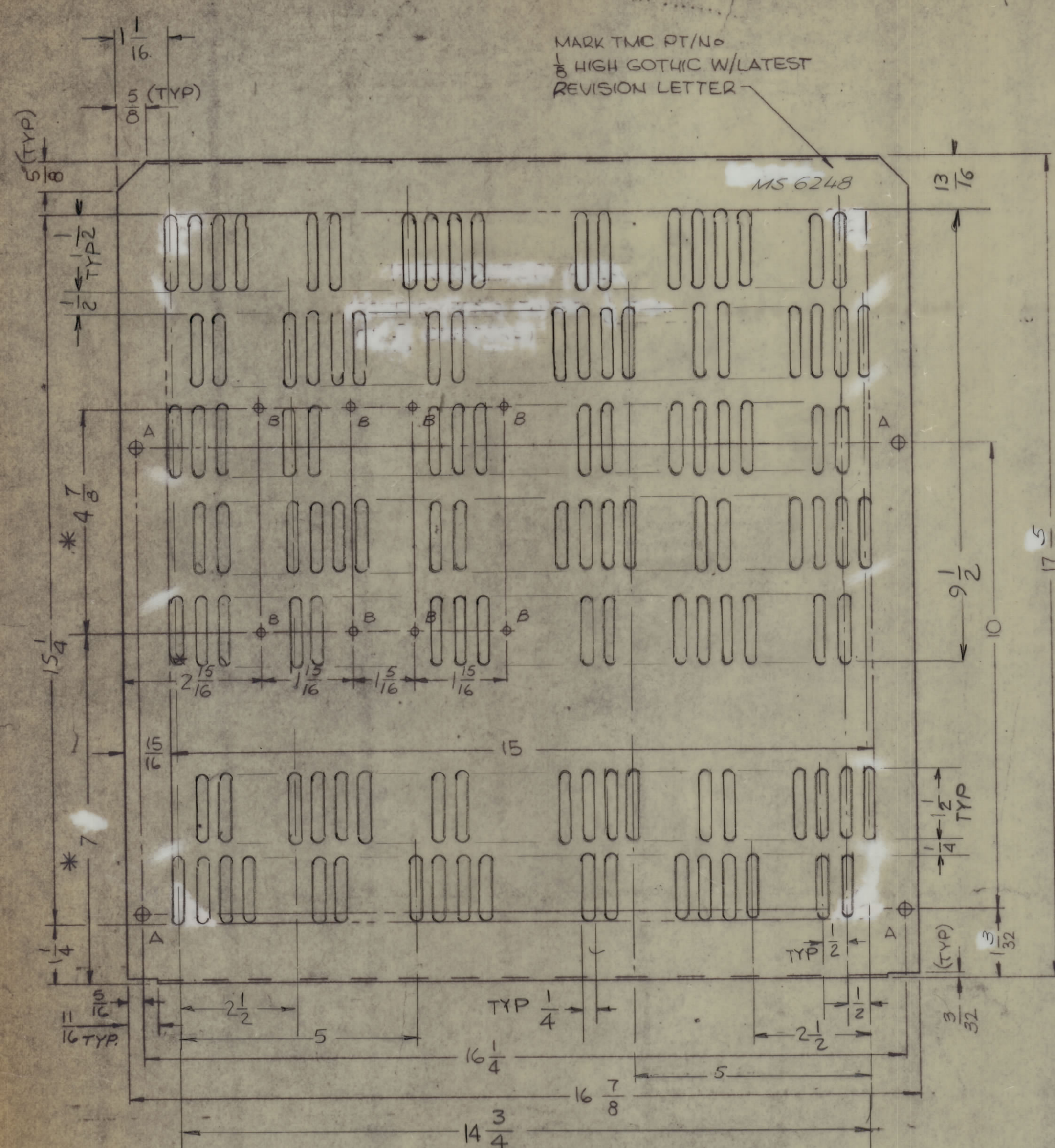


REVISIONS						
ZONE	LTR	DESCRIPTION	DATE	E.M.N.O	DRAFT	CHKD APPD
	Ø	ORIG RELEASE FOR PRODUCTION	10/9/71		RG	
	A	SLOTTED AREA WAS PERFORATED AREA 1/8 DIA ON 3/16 C	12/26-71	21189	GD	CL CL



HOLE	DESCRIPTION	REQ
A	1/4 DIA.	4
B	USE EXISTING PERFORATED HOLES	8

NOTES:  
HARDWARE TO BE SUPPLIED AND ASSEMBLED BY TMC  
\*DIMENSIONS ARE APPROX

QTY. REQ.	ITEM	PART NO.	DESCRIPTION	SYMBOL
2	B	MS5338	PLATE, MTG CONTACT ELEC.	B
8	7	NTH0440BN5	NUT, PLAIN HEX	
8	6	LWS04MRN	WASHER, LOCK, SPLIT	
8	5	FW04HBN	WASHER, FLAT	
8	4	SCBP0440BN4	SCREW MACHINE	
2	3	MS5339	CONTACT ELECTRICAL	B
4	2	FS109-3	RING, RETAINING	A
4	1	FS110-1	STUD, TURNLOCK	A

LIST OF MATERIAL				
THE TECHNICAL MATERIEL CORP.			MAMARONECK, NEW YORK	
COVER, BOTTOM				
SIZE	CODE IDENT.NO.	DWG NO.	ISSUE	
C	82679	MS 6248	A	
SCALE	NTS	SHEET	OF	

- UNLESS OTHERWISE SPECIFIED:
- USE MATERIAL THICKNESS FOR MAXIMUM RADIUS ON ALL BENDS
  - ALL ANGULAR BENDS 90 DEGREES
  - REMOVE ALL BURRS AND SHARP EDGES
  - MOUNT INSERTS AFTER FINISHING

UNLESS OTHERWISE SPECIFIED DIMENSIONS ARE IN INCHES AND INCLUDE CHEMICALLY APPLIED OR PLATED FINISHES		
QTY / UNIT	MODEL USED ON	ASS'Y NO.
	KIT-368	
APPLICATION		
s401-451	CODE	A
NOTICE TO PERSONS RECEIVING THIS DRAWING		
THE TECHNICAL MATERIEL CORPORATION claims proprietary right in the material disclosed herein. This drawing is issued in confidence for engineering information only and may not be reproduced or used to manufacture anything shown hereon without permission from THE TECHNICAL MATERIEL CORPORATION to the user. This drawing is loaned for mutual assistance and is subject to recall at any time.		

TOLERANCES ON	
DECIMALS	FRACTIONS
.X ± .05	± 1/64
.XX ± .01	ANGLES
.XXX ± .005	± 0° -30'
MATERIAL	
.051 ALUMINUM	
5052-H32	
FINISH	
S404 YELLOW IRIDITE	

FINAL APPROVAL	DATE
<i>AL</i>	7 Oct 71
MECH. DES.	DATE
AL PETROCCA	10-7-71
ELECT. DES.	DATE
CHECKED	DATE
DRAWN	DATE
GE	10/1/71