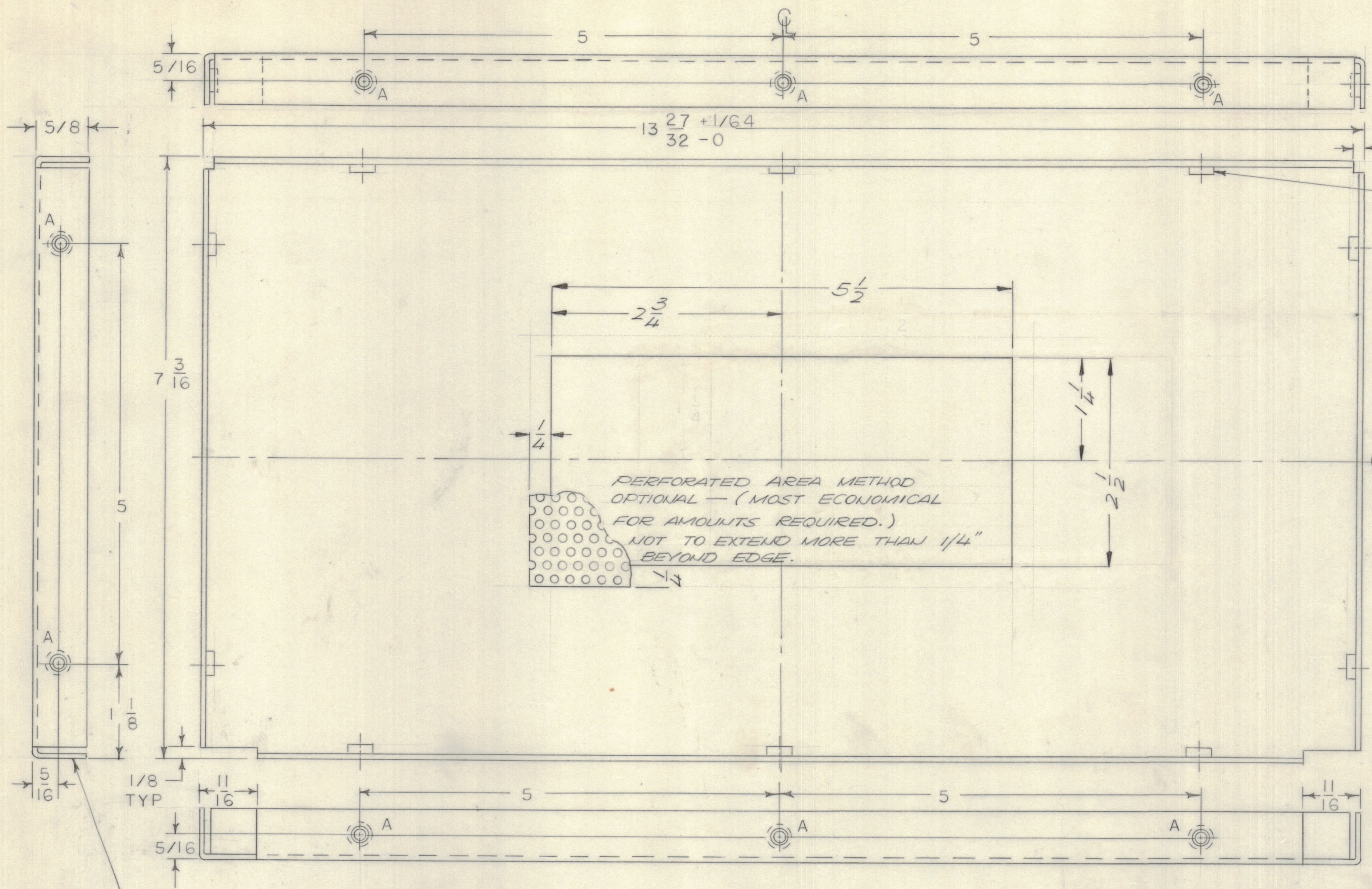


					REVISIONS		
E.M.N.NO	DRAFT	CHKD	ZONE	LTR	DESCRIPTION	DATE	APPROVED
	0			0	ORIGINAL RELEASE FOR PRODUCTION	9/9/72	



MS-6282 -1	AS SHOWN
MS-6282 -2	W/O CUT OUT

HOLE	DESCRIPTION	REQD
A	.191-.194 DIA	10

- UNLESS OTHERWISE SPECIFIED:
1. USE MATERIAL THICKNESS FOR MAXIMUM RADIUS ON ALL BENDS.
  2. ALL ANGULAR BENDS 90 DEGREES.
  3. REMOVE ALL BURRS AND SHARP EDGES.
  4. MOUNT INSERTS AFTER FINISHING.

OPPOSITE SIDE TYP

QTY. REQ.	ITEM	PART NO.	DESCRIPTION	SYMBOL
10	1	NT129-632-3	NUT ROUND SWAGE TYPE	A

LIST OF MATERIAL

2	MFR-IOKE-5	BMA 483
QTY / UNIT	MODEL USED ON	ASS'Y NO.
APPLICATION		
CODE		

UNLESS OTHERWISE SPECIFIED DIMENSIONS ARE IN INCHES AND INCLUDE CHEMICALLY APPLIED OR PLATED FINISHES

TOLERANCES ON  
 DECIMALS .X ± .05  
 .XX ± .01  
 .XXX ± .005  
 FRACTIONS ± 1/64  
 ANGLES ± 0° -30'

FINAL APPROVAL	DATE
MECH. DES.	DATE
ELECT. DES.	DATE
CHECKED	DATE
DRAWN	DATE
R FORLANO	8-31-71

THE TECHNICAL MATERIEL CORP.  
 MAMARONECK, NEW YORK

PLATE, SHIELD

NOTICE TO PERSONS RECEIVING THIS DRAWING  
 THE TECHNICAL MATERIEL CORPORATION claims proprietary right in the material disclosed hereon. This drawing is issued in confidence for engineering information only and may not be reproduced or used to manufacture anything shown hereon without permission from THE TECHNICAL MATERIEL CORPORATION to the user. This drawing is loaned for mutual assistance and is subject to recall at any time.

MATERIAL .063 THK  
 ALUM 5052 H32  
 FINISH

SIZE	CODE IDENT NO.	DWG NO.	ISSUE
C	82679	MS 6282	0
SCALE	1/1	SHEET	1 OF 1