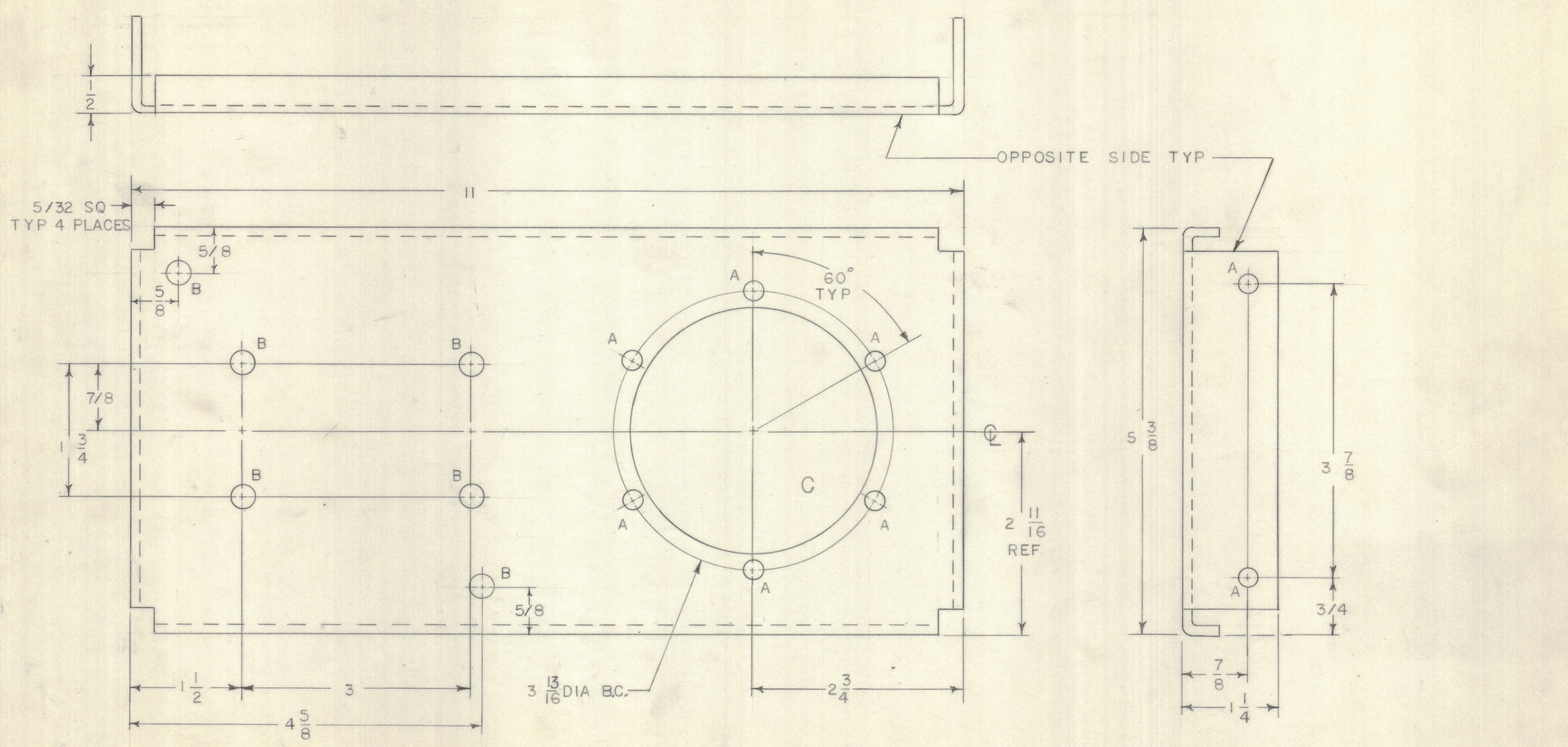


HOLE	DESCRIPTION	REQD
A	1/4 DIA	10
B	5/16 DIA	6
C	3 1/4 DIA	1

- UNLESS OTHERWISE SPECIFIED:
- USE MATERIAL THICKNESS FOR MAXIMUM RADIUS ON ALL BENDS.
  - ALL ANGULAR BENDS 90 DEGREES.
  - REMOVE ALL BURRS AND SHARP EDGES.
  - MOUNT INSERTS AFTER FINISHING.

REVISIONS						DATE	APPROVED
E.M.N.NO	DRAFT	CHKD	ZONE	LTR	DESCRIPTION		
	RF			X	EXP RELEASE	8-9-71	
	W			Ø	ORIGINAL RELEASE FOR PRODUCTION	3/6/72	



1	MAT-5	BMA-474
1	MFTR-IOKE-2	BMA-484
QTY / UNIT	MODEL USED ON	ASS'Y NO.
APPLICATION		
CODE		

NOTICE TO PERSONS RECEIVING THIS DRAWING  
 THE TECHNICAL MATERIEL CORPORATION claims proprietary right in the material disclosed hereon. This drawing is issued in confidence for engineering information only and may not be reproduced or used to manufacture anything shown hereon without permission from THE TECHNICAL MATERIEL CORPORATION to the user. This drawing is loaned for mutual assistance and is subject to recall at any time.

UNLESS OTHERWISE SPECIFIED DIMENSIONS ARE IN INCHES AND INCLUDE CHEMICALLY APPLIED OR PLATED FINISHES

TOLERANCES ON  
 DECIMALS .X ± .05  
 .XX ± .01  
 .XXX ± .005  
 FRACTIONS ± 1/64  
 ANGLES ± 0° -30'

MATERIAL 1/8 THK ALUM 5052-H32  
 FINISH S404 IRIDITE

QTY. REQ.	ITEM	PART NO.	DESCRIPTION	SYMBOL
FB LIST OF MATERIAL				
FINAL APPROVAL		DATE	THE TECHNICAL MATERIEL CORP. MAMARONECK, NEW YORK	
MECH. DES.		DATE		
ELECT. DES.		DATE		
CHECKED		DATE		
DRAWN		DATE	PLATE, TOP. MTG.	
R. FORLANO		8-9-71		
SIZE	CODE	IDENT NO.	DWG NO.	ISSUE
C		82679	MS 6284	Ø
SCALE 1/1				SHEET 1 OF 1

MS 6284