

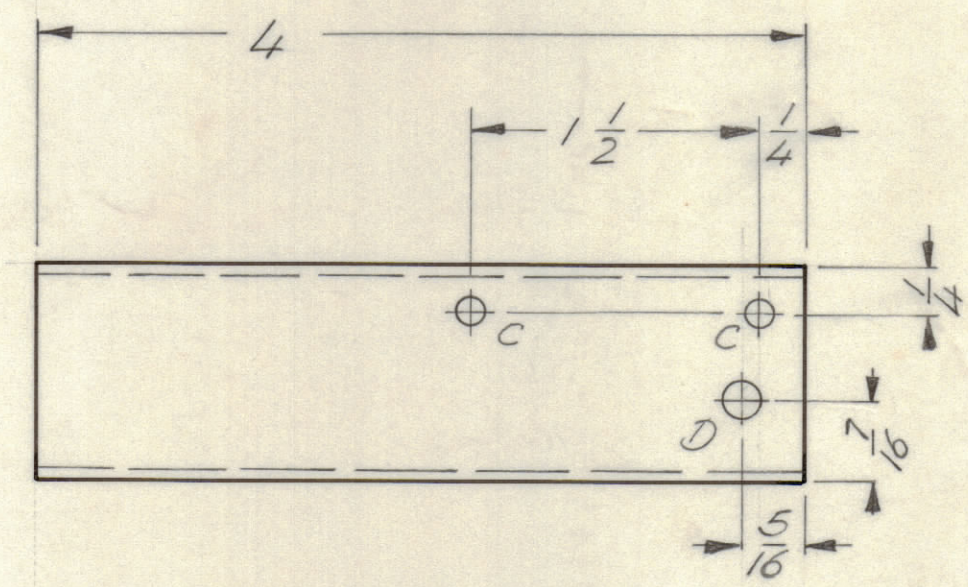
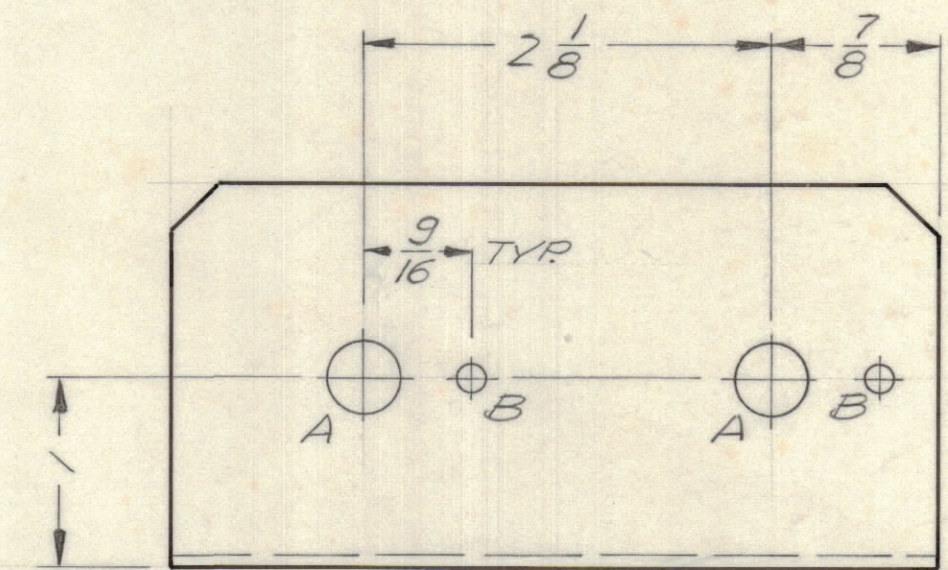
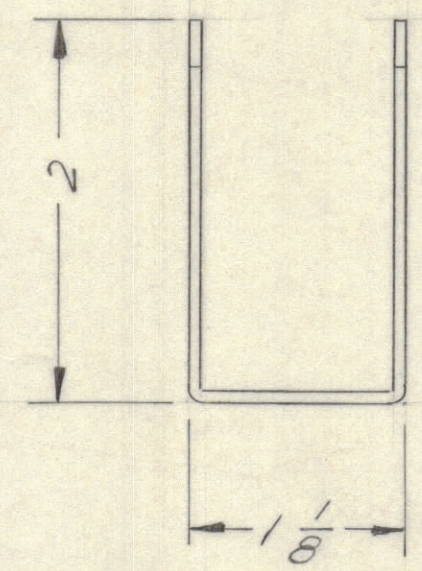
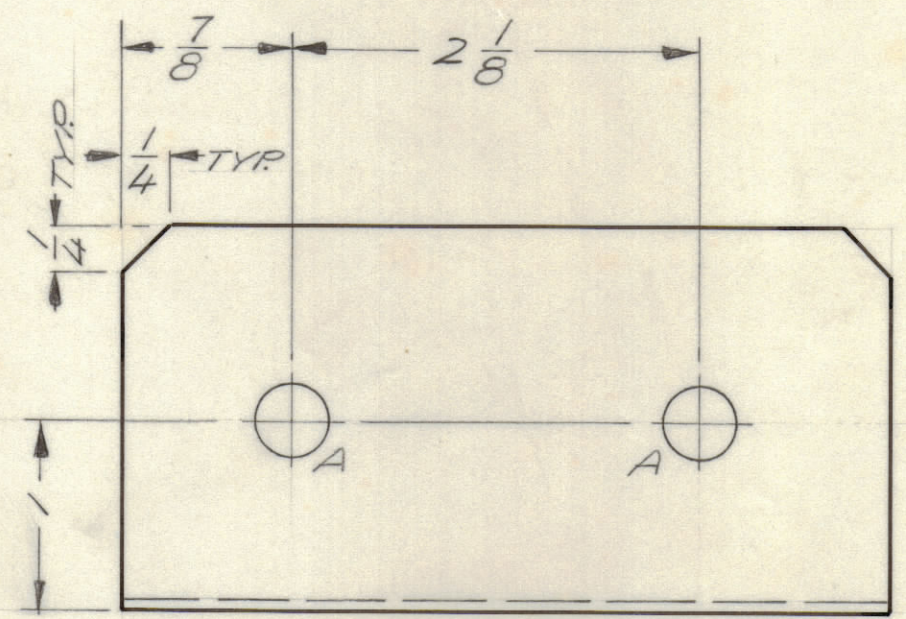
4

3

2

1

REVISIONS							
E.M.N.NO	DRAFT	CHKD	ZONE	LTR	DESCRIPTION	DATE	APPROVED
	0			Ø	ORIGINAL RELEASE FOR PRODUCTION	PH/71	LR



HOLE DESCRIPTION REQ.

A	3/8 DIA.	4
B	1/8 DIA.	2
C	9/64 DIA.	2
D	3/16 DIA.	1

MFE-1		
QTY / UNIT	MODEL USED ON	ASS'Y NO.
APPLICATION		
CODE		

NOTICE TO PERSONS RECEIVING THIS DRAWING
 THE TECHNICAL MATERIEL CORPORATION claims proprietary right in the material disclosed hereon. This drawing is issued in confidence for engineering information only and may not be reproduced or used to manufacture anything shown hereon without permission from THE TECHNICAL MATERIEL CORPORATION to the user. This drawing is loaned for mutual assistance and is subject to recall at any time.

UNLESS OTHERWISE SPECIFIED DIMENSIONS ARE IN INCHES AND INCLUDE CHEMICALLY APPLIED OR PLATED FINISHES

TOLERANCES ON
 DECIMALS .X ± .05
 .XX ± .01
 .XXX ± .005
 FRACTIONS ± 1/64
 ANGLES ± 0° -30'

MATERIAL .062 ALUM
 5052 H32
 FINISH S404
 YELLOW IRIDITE

QTY. REQ.	ITEM	PART NO.	DESCRIPTION	SYMBOL		
O.P. LIST OF MATERIAL						
FINAL APPROVAL		DATE	THE TECHNICAL MATERIEL CORP. MAMARONECK, NEW YORK ATTENUATOR SWITCH BRACKET			
MECH. DES.		DATE				
ELECT. DES.		DATE				
CHECKED		DATE				
DRAWN		DATE	SIZE	CODE IDENT NO.	DWG NO.	ISSUE
G. EVANGELIST		11/13/71	C	82679	M56296	Ø
SCALE 1:1			SHEET		OF	

M56296

B

A

4

3

2

1