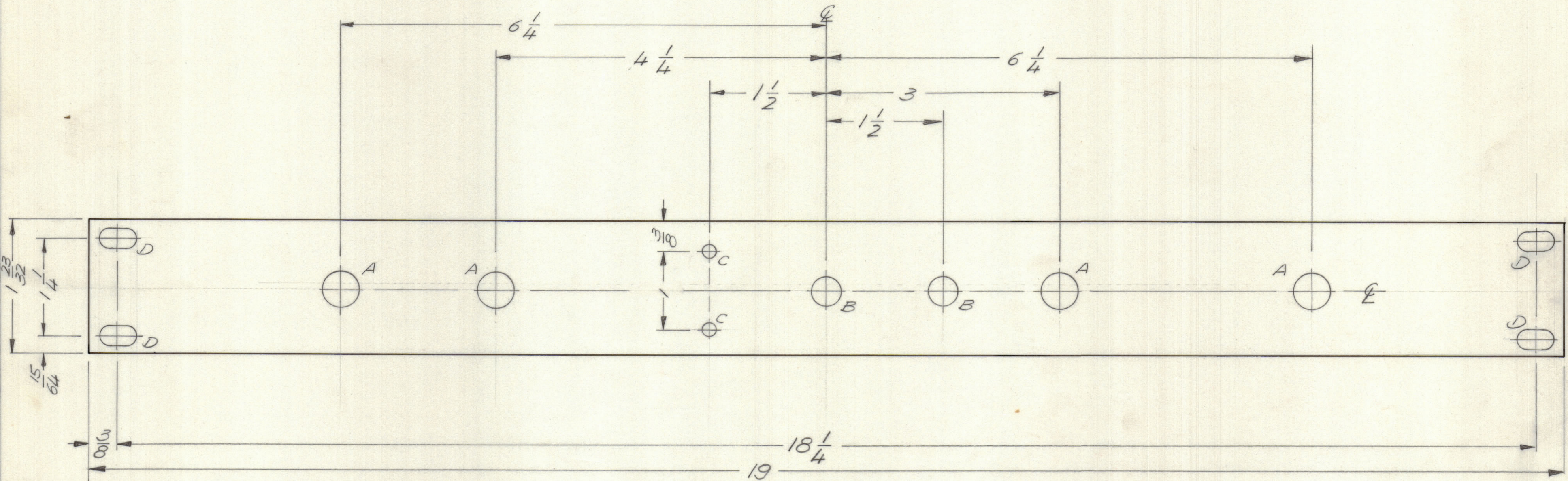
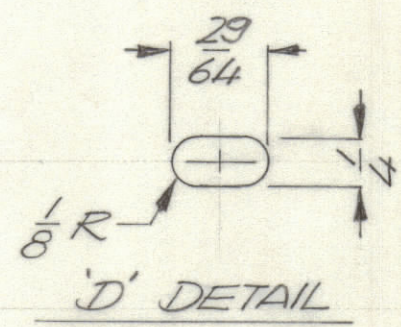


REVISIONS							
E.M.N.NO	DRAFT	CHKD	ZONE	LTR	DESCRIPTION	DATE	APPROVED
	0			0	ORIGINAL RELEASE FOR PRODUCTION	11/15/78	



HOLE DESCRIPTION REQ.

A	— 15/32 DIA. —	4
B	— 3/8 DIA. —	2
C	— 1/64 DIA. —	2
D	— SEE DETAIL —	4



FINISH NOTES:

- S404 - IRIDITE 14-2 AL-COAT.
- S114 - ZINC CHROMATE PRIMER } FRONT AND
- S115 - SMOOTH GRAY ENAMEL } EDGES ONLY

OR
PRIME AND PAINT PER CUSTOMER'S SPECIFICATIONS

1	MFTR10KE5	AX5156
QTY / UNIT	MODEL USED ON	ASS'Y NO.
APPLICATION		
CODE		

NOTICE TO PERSONS RECEIVING THIS DRAWING
 THE TECHNICAL MATERIEL CORPORATION claims proprietary right in the material disclosed hereon. This drawing is issued in confidence for engineering information only and may not be reproduced or used to manufacture anything shown hereon without permission from THE TECHNICAL MATERIEL CORPORATION to the user. This drawing is loaned for mutual assistance and is subject to recall at any time.

UNLESS OTHERWISE SPECIFIED DIMENSIONS ARE IN INCHES AND INCLUDE CHEMICALLY APPLIED OR PLATED FINISHES

TOLERANCES ON

DECIMALS	FRACTIONS
.X ± .05	± 1/64
.XX ± .01	ANGLES
.XXX ± .005	± 0° -30'

MATERIAL 3/16 THK. ALUM
2024 T-3

FINISH
AS NOTED

QTY. REQ.	ITEM	PART NO.	DESCRIPTION	SYMBOL
S.D. LIST OF MATERIAL				
FINAL APPROVAL		DATE	THE TECHNICAL MATERIEL CORP. MAMARONECK, NEW YORK FRONT PANEL CONTROL	
MECH. DES. A.P.		DATE 1-12-72		
ELECT. DES.		DATE		
CHECKED		DATE		
DRAWN EVANGELIST		DATE 11/18/71	SIZE C	CODE IDENT NO. 82679
			DWG NO. MS 6316	ISSUE
			SCALE 1:1	SHEET OF