

4

3

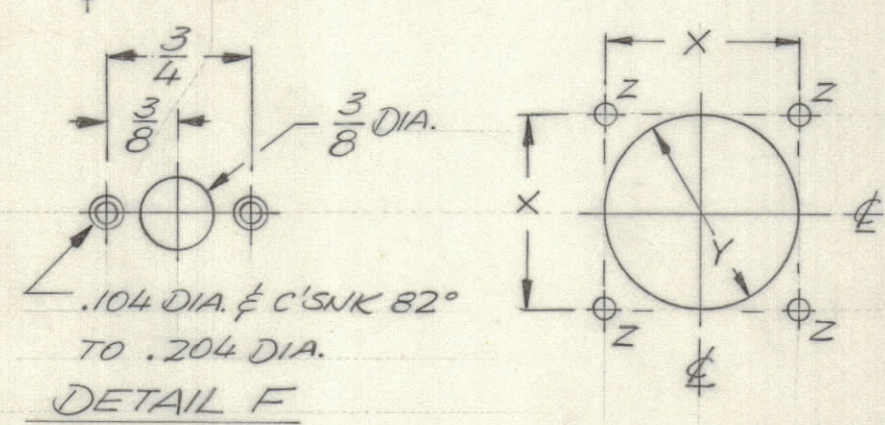
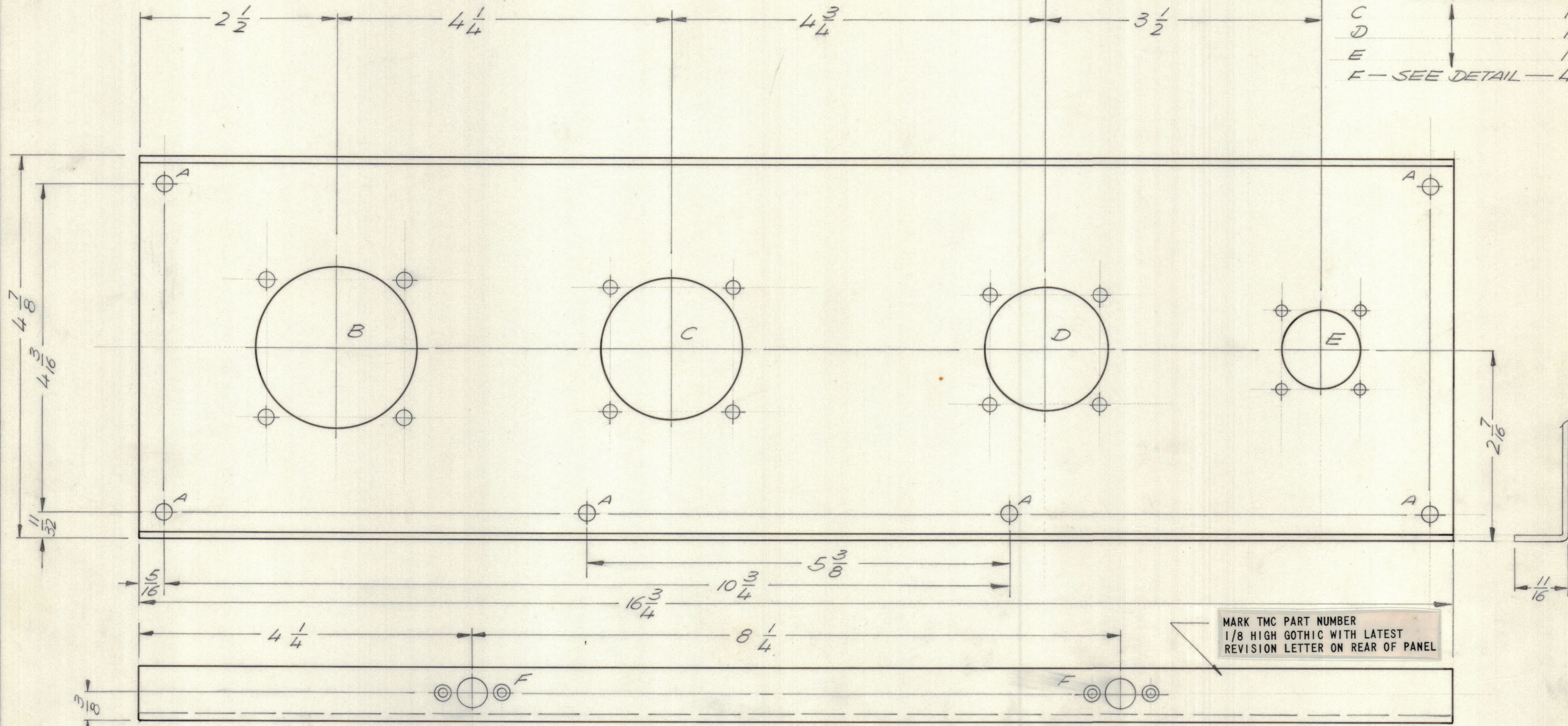
2

1

- UNLESS OTHERWISE SPECIFIED:
1. USE MATERIAL THICKNESS FOR MAXIMUM RADIUS ON ALL BENDS.
 2. ALL ANGULAR BENDS 90 DEGREES.
 3. REMOVE ALL BURRS AND SHARP EDGES.
 4. MOUNT INSERTS AFTER FINISHING.

REVISIONS							
E.M.N.NO	DRAFT	CHKD	ZONE	LTR	DESCRIPTION	DATE	APPROVED
	W			B	ORIGINAL RELEASE FOR PRODUCTION	11/72	

HOLE DESCRIPTION	QTY
A — 13/64 DIA. —	6
B — SEE DETAIL —	1
C	1
D	1
E	1
F — SEE DETAIL —	4



DETAIL	X	Y	Z
B	1 3/4	2 3/32	3/16
C	1 9/16	1 13/16	13/64
D	1 3/8	1 9/16	13/64
E	1 5/16	1	11/64

QTY / UNIT	RDCR-1YA	AXS16Z
APPLICATION		
CODE		

NOTICE TO PERSONS RECEIVING THIS DRAWING
 THE TECHNICAL MATERIEL CORPORATION claims proprietary right in the material disclosed hereon. This drawing is issued in confidence for engineering information only and may not be reproduced or used to manufacture anything shown hereon without permission from THE TECHNICAL MATERIEL CORPORATION to the user. This drawing is loaned for mutual assistance and is subject to recall at any time.

REF LD2510

UNLESS OTHERWISE SPECIFIED DIMENSIONS ARE IN INCHES AND INCLUDE CHEMICALLY APPLIED OR PLATED FINISHES

TOLERANCES ON

DECIMALS	FRACTIONS
.X ± .05	± 1/64
.XX ± .01	ANGLES
.XXX ± .005	± 0° -30'

MATERIAL .081 THK ALUM
5052 H32

FINISH 5404
YEL. IRIDITE

QTY. REQ.	ITEM	PART NO.	DESCRIPTION	SYMBOL
S.D.			LIST OF MATERIAL	
FINAL APPROVAL: <i>S. D. Marco</i> DATE: 1-6-72 MECH. DES.: <i>R. UZZO</i> DATE: 11-10-71 ELECT. DES.: DATE: CHECKED: <i>R. UZZO</i> DATE: 11-10-71 DRAWN: <i>GE</i> DATE: 11/2/71				
THE TECHNICAL MATERIEL CORP. MAMARONECK, NEW YORK				
<i>PLATE, REAR</i>				
SIZE	CODE IDENT NO.	DWG NO.	ISSUE	
C	82679	M56334	Ø	
SCALE 1:1			SHEET	OF

4

3

2

1

MS6334