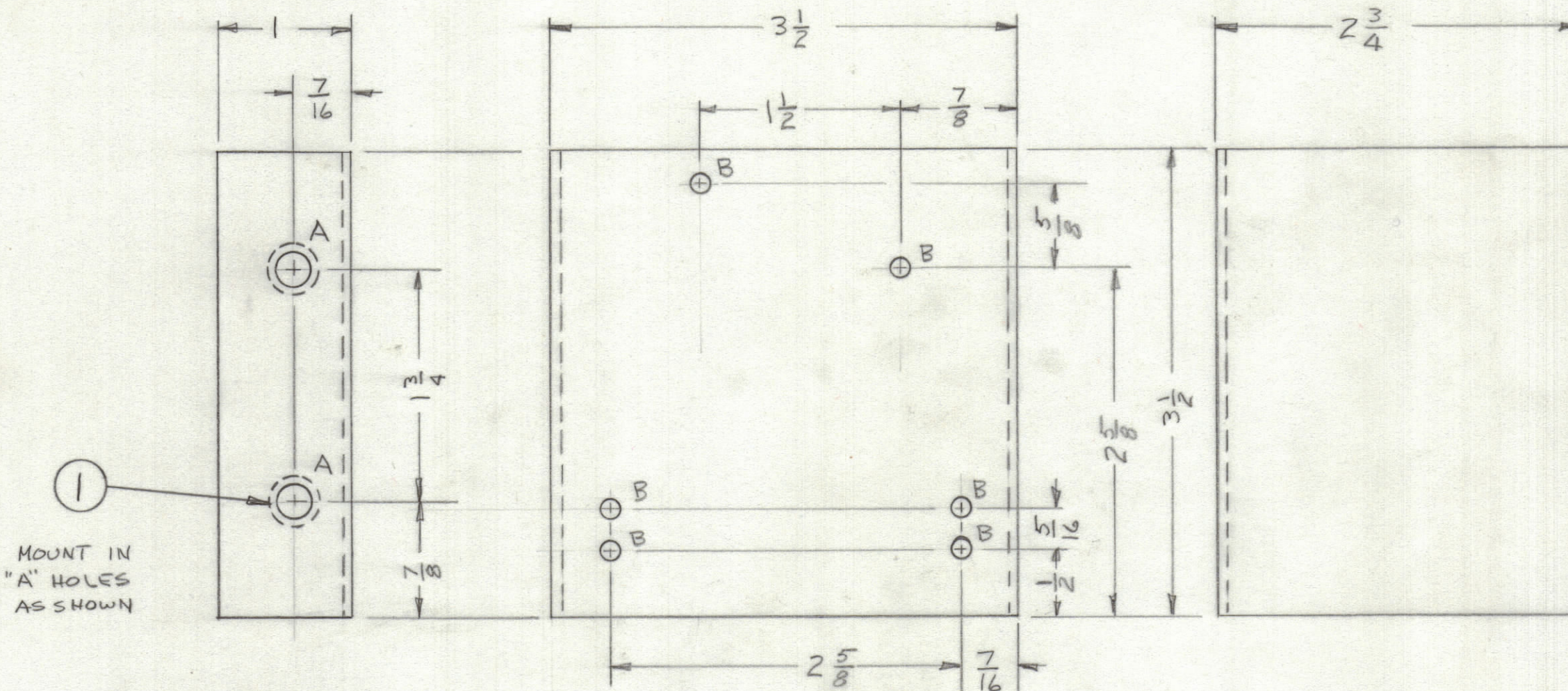


ZONE	LTR	DESCRIPTION	DATE	E.M.N.NO	DRAFT	CHKD	APPD
	Ø	ORIGINAL RELEASE FOR PRODUCTION	9/30/72			W	



A ~ .250-.254 DIA. 2 REQ'D.
 B ~ 9/64 DIA. 6 REQ'D.

- UNLESS OTHERWISE SPECIFIED:
- USE MATERIAL THICKNESS FOR MAXIMUM RADIUS ON ALL BENDS.
 - ALL ANGULAR BENDS 90 DEGREES.
 - REMOVE ALL BURRS AND SHARP EDGES.
 - MOUNT INSERTS AFTER FINISHING.

1	AX740	
QTY / UNIT	MODEL USED ON	ASS'Y NO.
APPLICATION		
	CODE	

NOTICE TO PERSONS RECEIVING THIS DRAWING
 THE TECHNICAL MATERIEL CORPORATION claims proprietary right in the material disclosed hereon. This drawing is issued in confidence for engineering information only and may not be reproduced or used to manufacture anything shown hereon without permission from THE TECHNICAL MATERIEL CORPORATION to the user. This drawing is loaned for mutual assistance and is subject to recall at any time.

UNLESS OTHERWISE SPECIFIED DIMENSIONS ARE IN INCHES AND INCLUDE CHEMICALLY APPLIED OR PLATED FINISHES

TOLERANCES ON
 DECIMALS .X ± .05
 .XX ± .01
 .XXX ± .005
 FRACTIONS ± 1/64
 ANGLES ± 0° -30'

MATERIAL 064 ALUM
 5052-H32

FINISH
 S404 YEL IRID

2	1	NT123-1032-4	NUT, PLN, SWAGE	
QTY. REQ.	ITEM	PART NO.	DESCRIPTION	SYMBOL
LIST OF MATERIAL				
FINAL APPROVAL <i>[Signature]</i> DATE 18/MAR/72 MECH. DES. <i>[Signature]</i> DATE 18/MAR/72 ELECT. DES. DATE CHECKED DATE DRAWN <i>[Signature]</i> DATE 18/MAR/72				
THE TECHNICAL MATERIEL CORP. MAMARONECK, NEW YORK				
BRKT, RELAY MTG				
	SIZE	CODE IDENT.NO.	DWG NO.	ISSUE
	C	82679	MS6355	Ø
SCALE			SHEET	OF

MS6355 Ø B