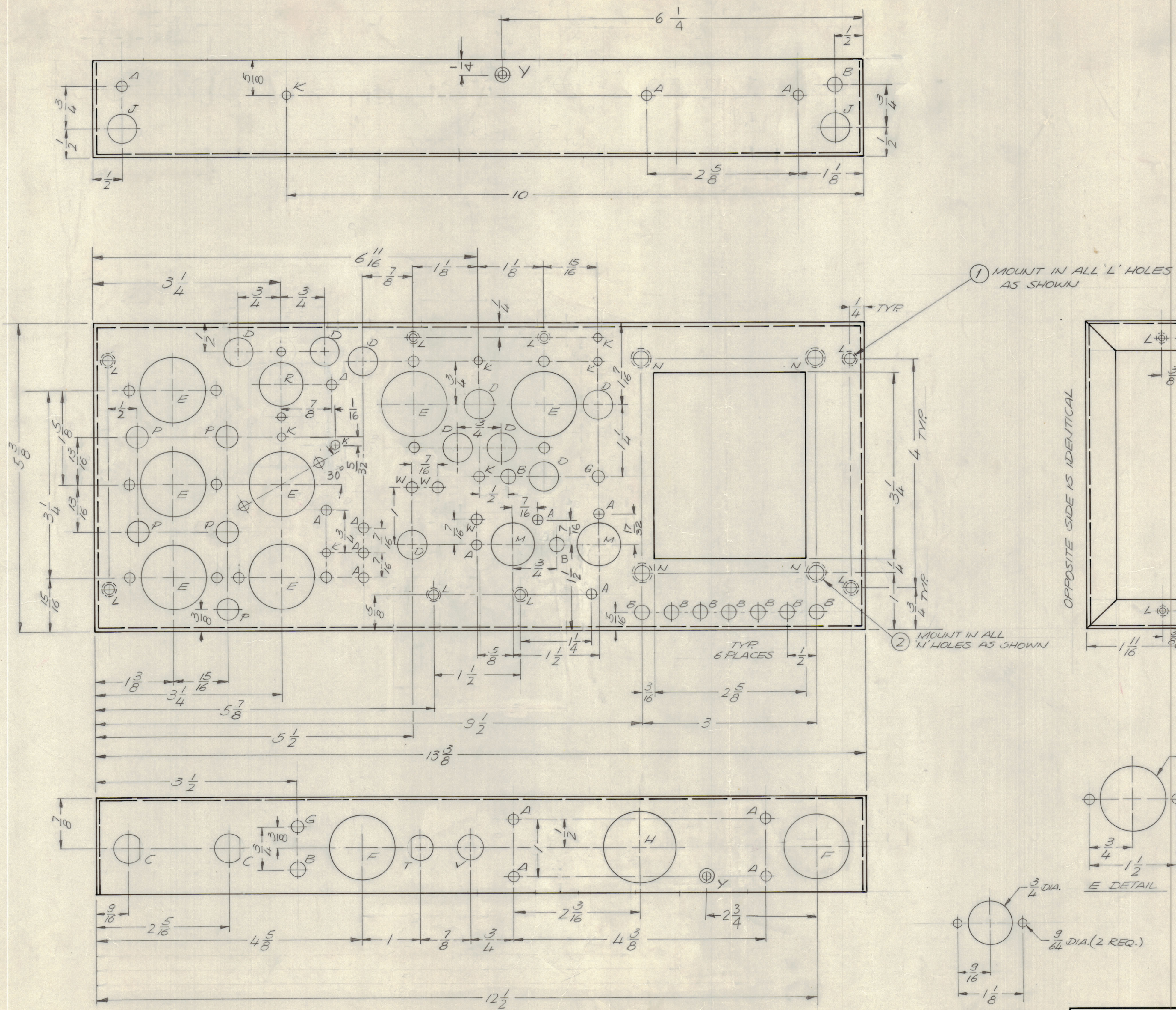
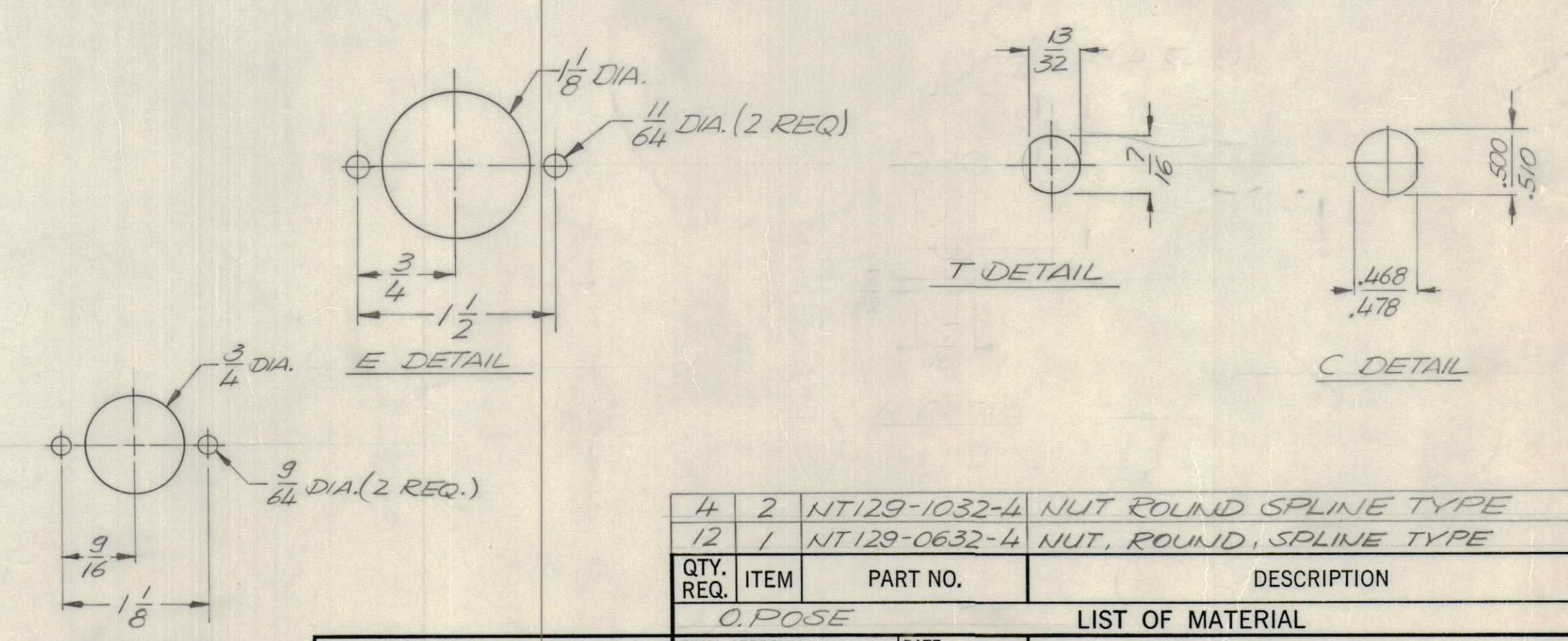


REVISIONS							
E.M.N.O	DRAFT	CHKD	ZONE	LTR	DESCRIPTION	DATE	APPROVED
				X1	HOLE PATTERN COMP. REVISED	10/24/72	
				X2	HOLE PATTERN COMP. REVISED	3/28/73	
				D	ORIGINAL RELEASE FOR PRODUCTION	1-26-76	
21341	GDL	JFB		A	3" HOLES, 1" ONE "K" HOLE & TWO "Y" ADDED		



HOLE	DESCRIPTION	QTY.
A	11/64 DIA.	16
B	1/4 DIA.	11
C	SEE DETAIL	2
D	1/2 DIA.	9
E	SEE DETAIL	7
F	1 5/32 DIA.	2
G	13/64 DIA.	2
H	1/4 DIA.	1
J	5/8 DIA.	2
K	9/64 DIA.	8
L	.191 - .194 DIA.	12
M	3/4 DIA.	2
N	.251 - .254 DIA.	4
P	3/8 DIA.	5
R	SEE DETAIL	1
T	SEE DETAIL	1
V	7/16 DIA.	1
W	3/16 DIA.	3
Y	.144 DIA C'SNK 82° TO .244 DIA	2



QTY. REQ.	ITEM	PART NO.	DESCRIPTION	SYMBOL
4	2	NT129-1032-4	NUT ROUND SPLINE TYPE	N
12	1	NT129-0632-4	NUT, ROUND, SPLINE TYPE	L

LIST OF MATERIAL				
FINAL APPROVAL		DATE		THE TECHNICAL MATERIEL CORP. MAMARONECK, NEW YORK CHASSIS, PWR. SUPPLY
MECH. DES.		DATE		
ELECT. DES.		DATE		
CHECKED		DATE		
DRAWN		DATE		
G. EVANGELIST		5/26/71		
MATERIAL .064 ALUM. 5052 H32				SIZE CODE IDENT NO. DWG NO.
FINISH S404 YEL. IRIDITE				D 82679 156372
SCALE 1:1				ISSUE A
				SHEET OF

- UNLESS OTHERWISE SPECIFIED:
1. USE MATERIAL THICKNESS FOR MAXIMUM RADIUS ON ALL BENDS.
 2. ALL ANGULAR BENDS 90 DEGREES.
 3. REMOVE ALL BURRS AND SHARP EDGES.
 4. MOUNT INSERTS AFTER FINISHING.

1 TM 125		
QTY / UNIT	MODEL USED ON	ASS'Y NO.
APPLICATION		
CODE		
NOTICE TO PERSONS RECEIVING THIS DRAWING		
THE TECHNICAL MATERIEL CORPORATION claims proprietary right in the material disclosed hereon. This drawing is issued in confidence for engineering information only and may not be reproduced or used to manufacture anything shown hereon without permission from THE TECHNICAL MATERIEL CORPORATION to the user. This drawing is loaned for mutual assistance and is subject to recall at any time.		