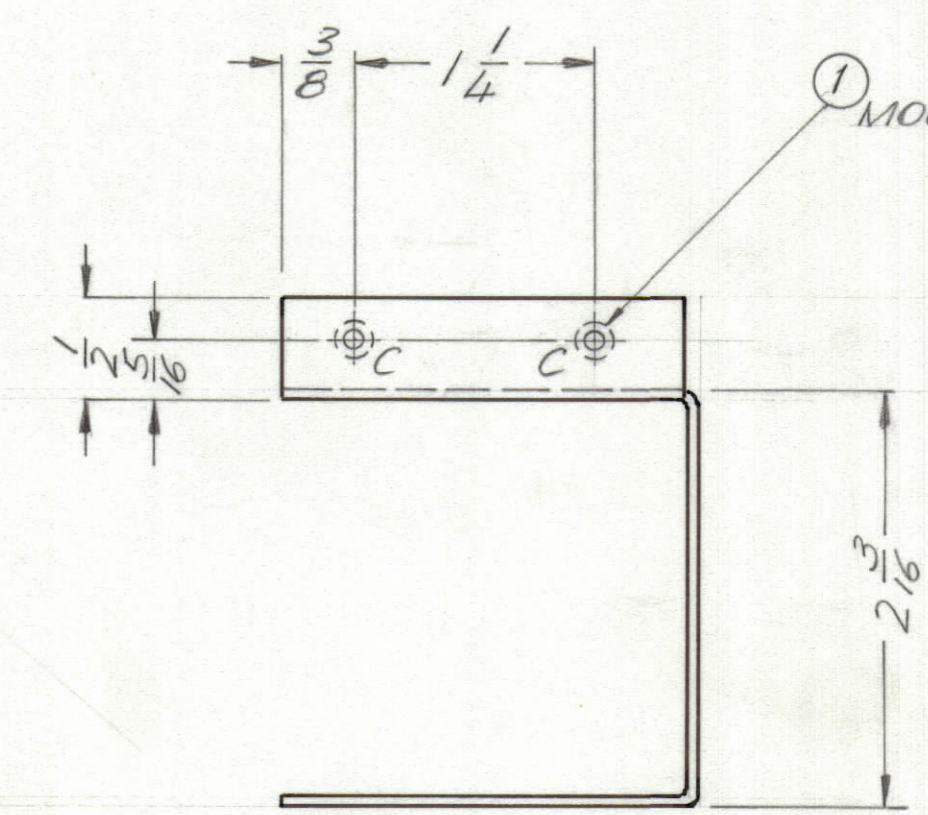
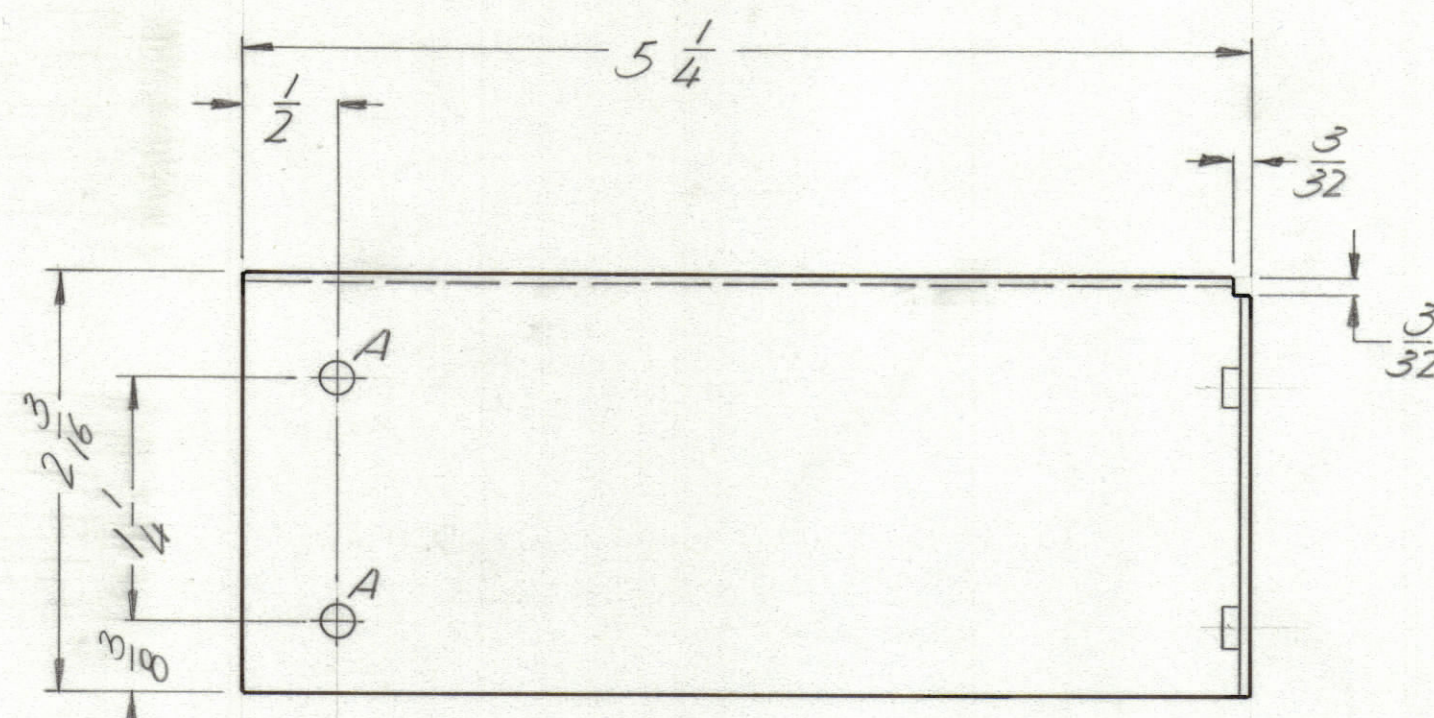
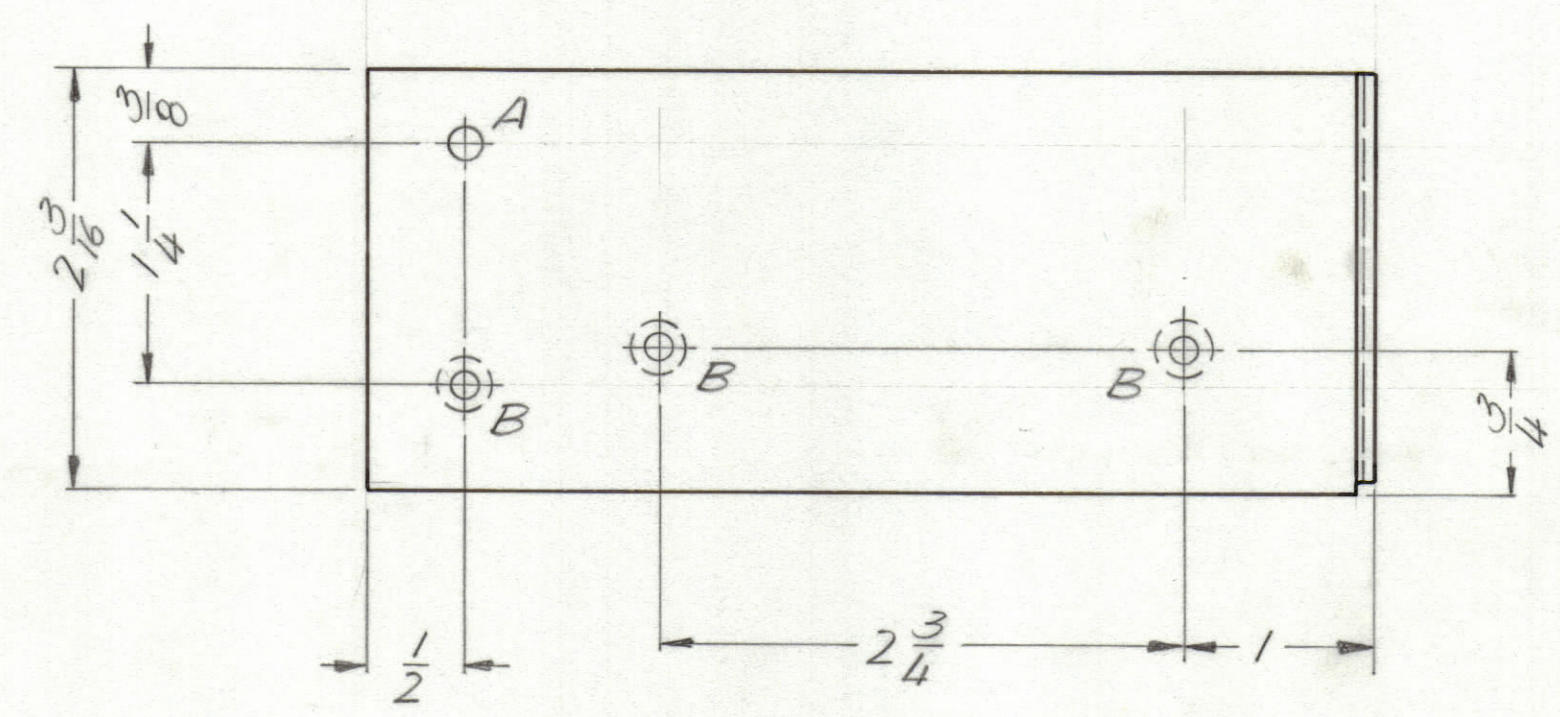


REVISIONS						
ZONE	LTR	DESCRIPTION	DATE	E.M.N.NO	DRAFT	CHKD APPD
	Ø	ORIGINAL RELEASE FOR PRODUCTION	11/21/72		EP	



HOLE DESCRIPTION REQ.
 A—1/164 DIA — 3
 B—0.632 C'SNK(82°)—3
 C—.191-.194 DIA.—2



QTY. REQ.	ITEM	PART NO.	DESCRIPTION	SYMBOL
2	1	NT1290632-4	NUT, ROUND, SPLINE TYPE	C

O. POSE		LIST OF MATERIAL	
FINAL APPROVAL	DATE	THE TECHNICAL MATERIEL CORP.	
<i>[Signature]</i>	11/20/72	MAMARONECK, NEW YORK	
MECH. DES.	DATE	TRAY STANDARD SUPPORT	
ALP.			
ELECT. DES.	DATE		
CHECKED	DATE		
DRAWN	DATE		
CE	9/27/72		

1	RSU-1	
QTY / UNIT	MODEL USED ON	ASS'Y NO.
APPLICATION		
CODE		

UNLESS OTHERWISE SPECIFIED DIMENSIONS ARE IN INCHES AND INCLUDE CHEMICALLY APPLIED OR PLATED FINISHES

TOLERANCES ON
 DECIMALS .X ± .05
 FRACTIONS ± 1/64
 ANGLES ± 0° -30'

MATERIAL .064 ALUM.
 5052 H32
 FINISH 5404
 YELLOW IRIDITE

NOTICE TO PERSONS RECEIVING THIS DRAWING
 THE TECHNICAL MATERIEL CORPORATION claims proprietary right in the material disclosed hereon. This drawing is issued in confidence for engineering information only and may not be reproduced or used to manufacture anything shown hereon without permission from THE TECHNICAL MATERIEL CORPORATION to the user. This drawing is loaned for mutual assistance and is subject to recall at any time.

SIZE	CODE IDENT.NO.	DWG NO.	ISSUE
C	82679	MS6395	Ø
SCALE 1:1			SHEET OF

MS6395