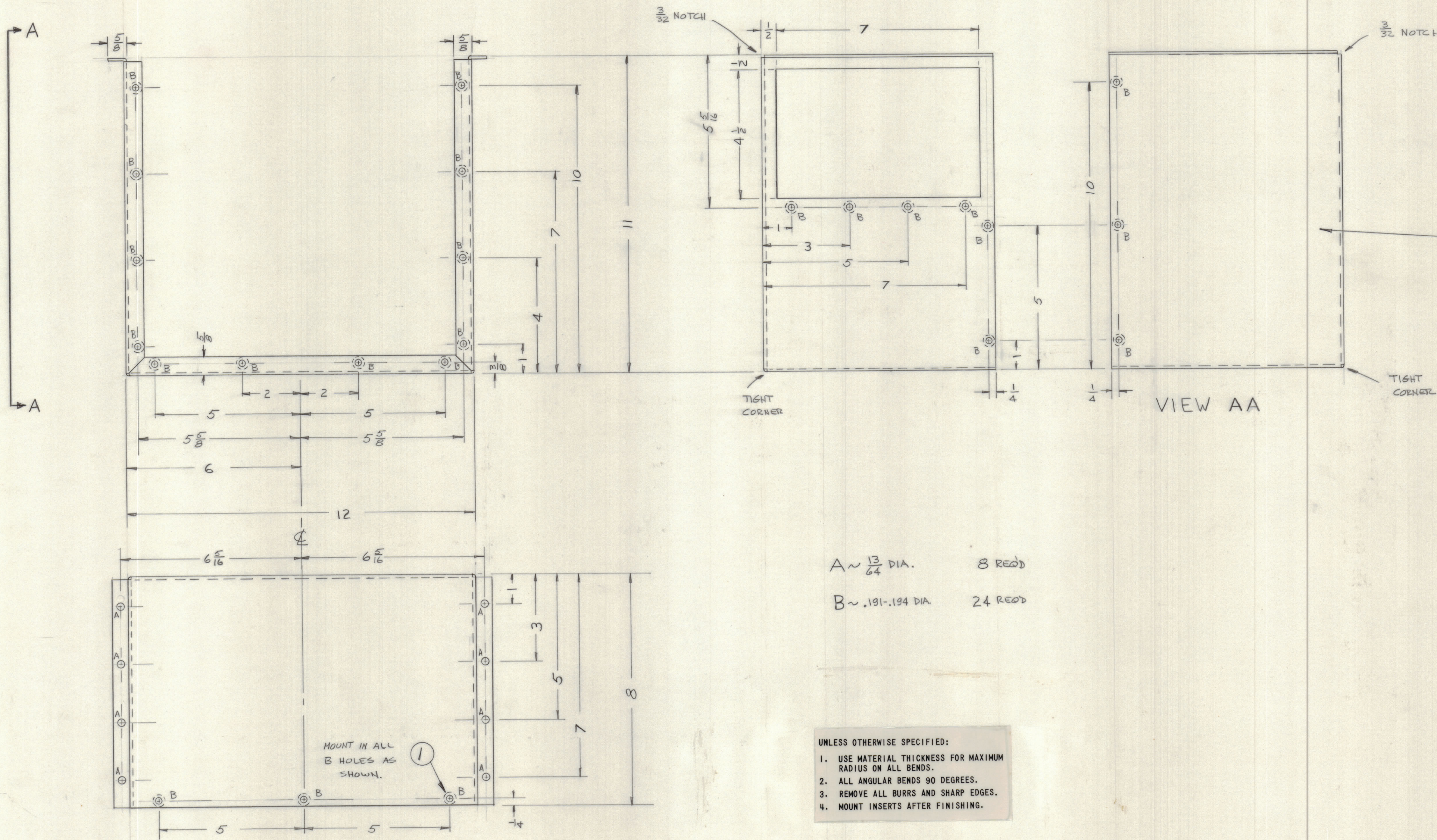


REVISIONS						
E.M.N.NO	DRAFT	CHKD	ZONE	LTR	DESCRIPTION	DATE
0					ORIGINAL RELEASE FOR PRODUCTION	2/19/73



MARK TMC PART NUMBER  
1/8 HIGH GOTHIC WITH LATEST  
REVISION LETTER ON REAR OF PANEL

A ~ 13/64 DIA. 8 REED  
B ~ .191-.194 DIA 24 REED

- UNLESS OTHERWISE SPECIFIED:
1. USE MATERIAL THICKNESS FOR MAXIMUM RADIUS ON ALL BENDS.
  2. ALL ANGULAR BENDS 90 DEGREES.
  3. REMOVE ALL BURRS AND SHARP EDGES.
  4. MOUNT INSERTS AFTER FINISHING.

QTY. REQ.	ITEM	PART NO.	DESCRIPTION	SYMBOL
24	1	NT129-0632-4	NUT, SWAGE	B

LIST OF MATERIAL

UNLESS OTHERWISE SPECIFIED DIMENSIONS ARE IN INCHES AND INCLUDE CHEMICALLY APPLIED OR PLATED FINISHES		FINAL APPROVAL	DATE
TOLERANCES ON		MECH. DES.	DATE
DECIMALS	FRACTIONS	ELECT. DES.	DATE
.X ± .05	± 1/64	CHECKED	DATE
.XX ± .01	ANGLES	DRAWN	DATE
.XXX ± .005	± 0° -30'		

MATERIAL .064 ALUM  
5052-H32  
FINISH  
S404 YEL 12 D

SIZE	CODE	IDENT NO.	DWG NO.	ISSUE
D	82679	MSG423		0

SCALE SHEET OF

QTY / UNIT	MODEL USED ON	ASS'Y NO.
1	HFTA-SKJ	AX5151

APPLICATION

CODE

NOTICE TO PERSONS RECEIVING THIS DRAWING  
THE TECHNICAL MATERIEL CORPORATION claims proprietary right in the material disclosed hereon. This drawing is issued in confidence for engineering information only and may not be reproduced or used to manufacture anything shown hereon without permission from THE TECHNICAL MATERIEL CORPORATION to the user. This drawing is loaned for mutual assistance and is subject to recall at any time.