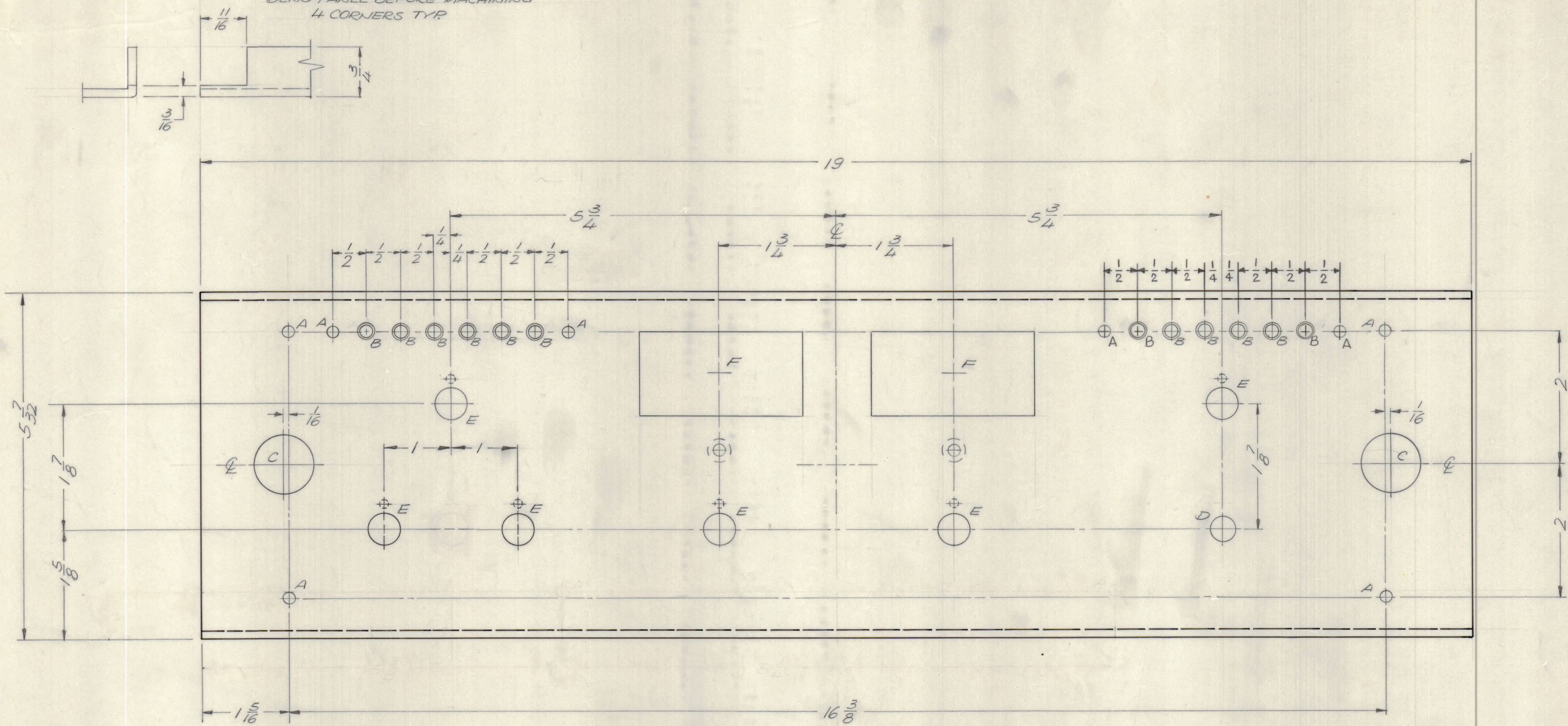
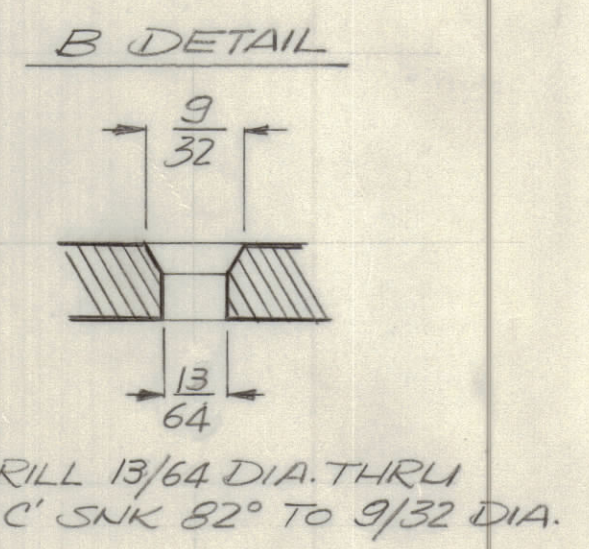
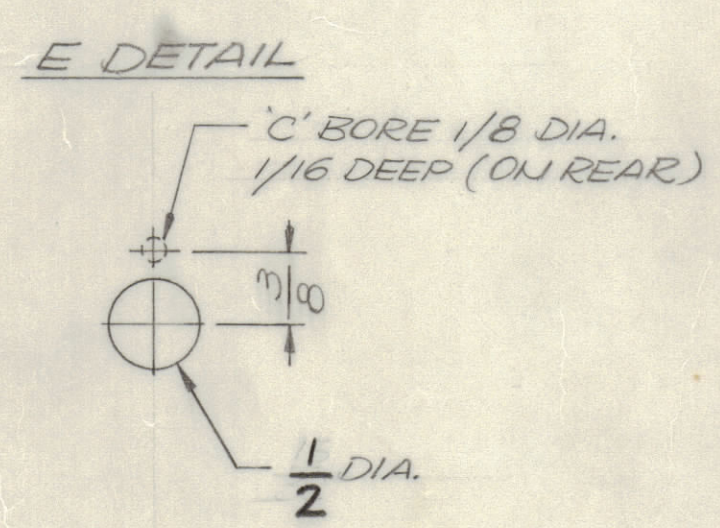
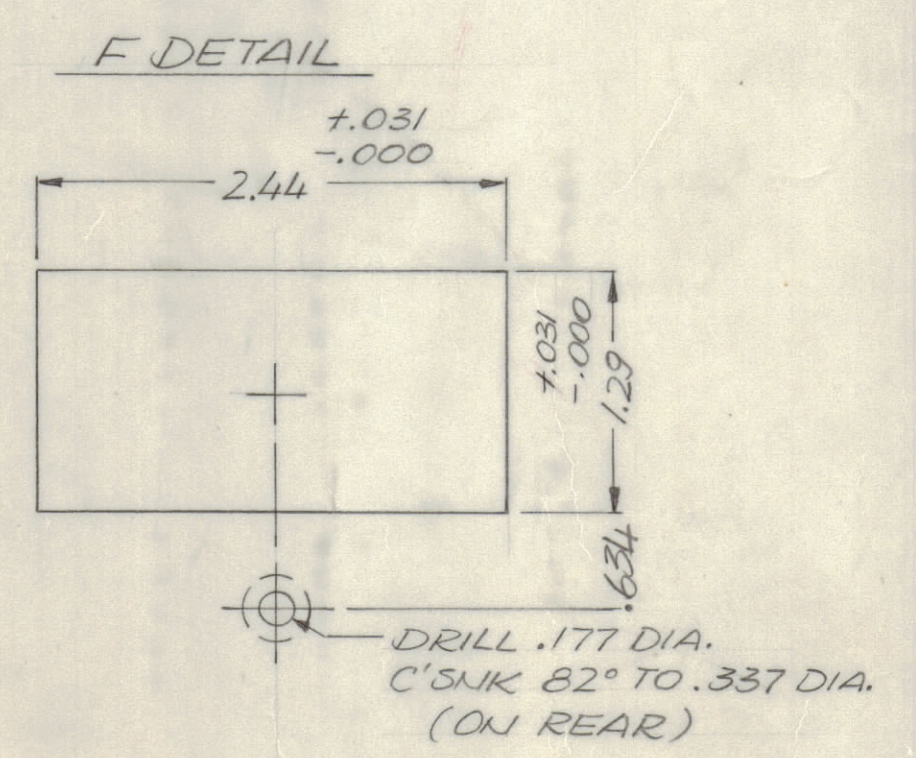


REVISIONS							
E.M.N.NO	DRAFT	CHKD	ZONE	LTR	DESCRIPTION	DATE	APPROVED
				X	2 B' Holes Added 2 A Holes Revised	3-22-73	
				X1	ADD B DETAIL & B HOLE (LEFT SIDE)	5-21-73	
				X2	ADD B & E HOLES	8/20/73	
					ORIGINAL RELEASE FOR PRODUCTION	11/30/73	
21438	GDL			A	ON 'B' DETAIL 13/64 DIA. WAS 3/16	7-13-76	

BEND PANEL BEFORE MACHINING
4 CORNERS TYR



HOLE DESCRIPTION	REQ.
A — 11/64 DIA.	10
B — SEE DETAIL	12
C — 7/8 DIA.	2
D — 3/8 DIA.	1
E — SEE E DETAIL	6
F — SEE F DETAIL	2



1. USE MATERIAL THICKNESS FOR MAXIMUM RADIUS ON ALL BENDS.
2. ALL ANGULAR BENDS 90 DEGREES.
3. REMOVE ALL BURRS AND SHARP EDGES.
4. MOUNT INSERTS AFTER FINISHING.

- FINISH NOTES:
1. S404 - IRIDITE 14-2 AL-COAT.
2. S114 - ZINC CHROMATE PRIMER } FRONT AND
3. S115 - SMOOTH GRAY ENAMEL } EDGES ONLY
OR
PRIME AND PAINT PER CUSTOMER'S SPECIFICATIONS

REF LD-3005

QTY. REQ.	ITEM	PART NO.	DESCRIPTION	SYMBOL
	E. BUDETTI LIST OF MATERIAL			
	THE TECHNICAL MATERIEL CORP. MAMARONECK, NEW YORK			
	PANEL, FRONT			
	SIZE	CODE	IDENT NO.	DWG NO.
	D	82679		MS 6449
	SCALE 1:1			SHEET OF

QTY / UNIT	MODEL USED ON	ASSY NO.
1	ATSA-3	
APPLICATION		
CODE		
MATERIAL 1/8 THK ALUM 5052 H32		
FINISH AS NOTED		

NOTICE TO PERSONS RECEIVING THIS DRAWING
THE TECHNICAL MATERIEL CORPORATION claims proprietary right in the material disclosed herein. This drawing is issued in confidence for engineering information only and may not be reproduced or used to manufacture anything shown hereon without permission from THE TECHNICAL MATERIEL CORPORATION to the user. This drawing is loaned for mutual assistance and is subject to recall at any time.