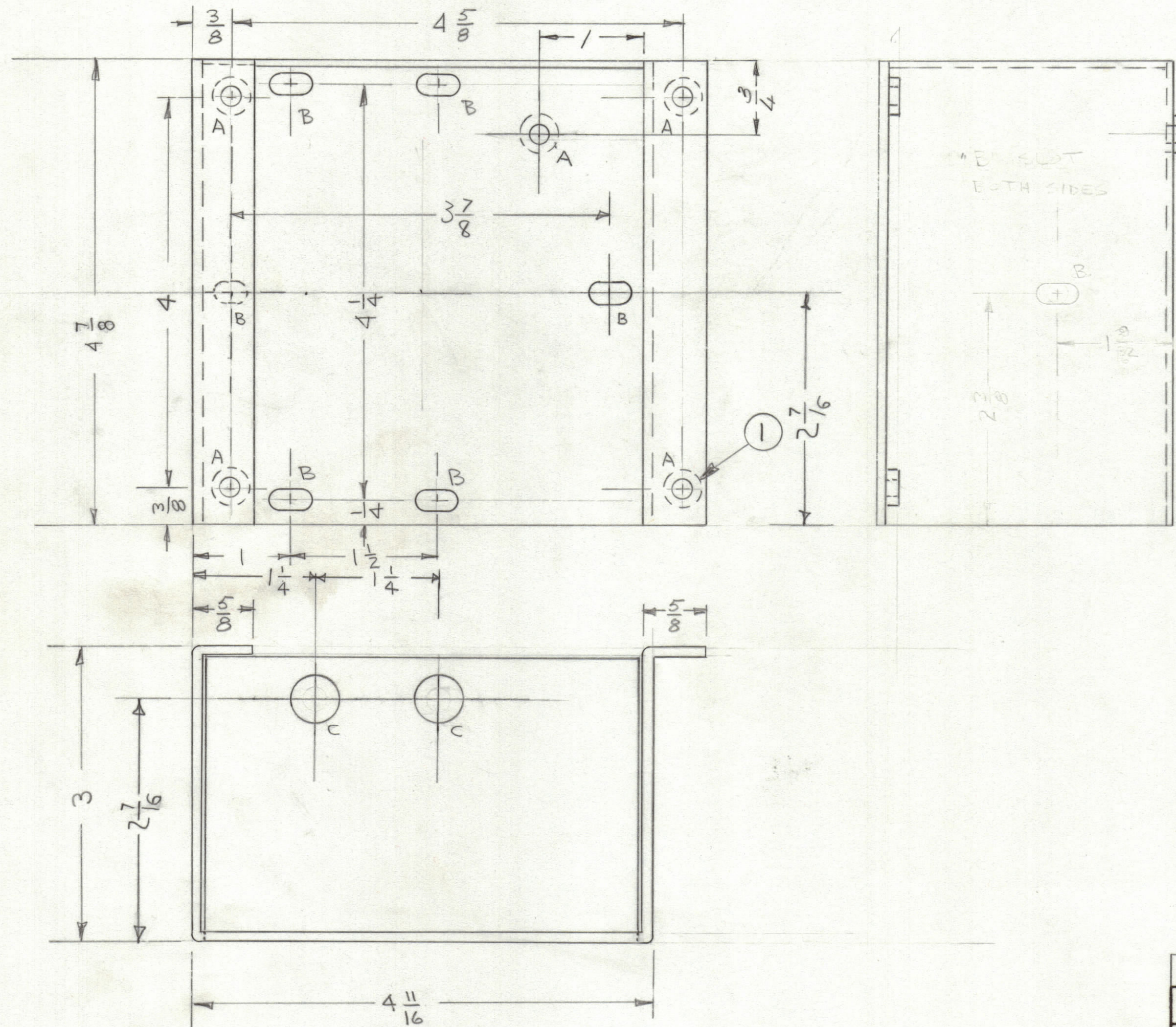


REVISIONS						
ZONE	LTR	DESCRIPTION	DATE	E.M.N.NO	DRAFT	CHKD APPD
	Ø	ORIGINAL RELEASE FOR PRODUCTION	11/8/73		DV	



A ~ .191-.194 DIA 5 REQ'D.
 B ~ 13/64 x 13/32 SLOT 6 REQ'D
 C ~ 1/2 DIA 2 REQ'D

5	1	NT129-0632-4	NUT SWAGE TYPE	A
QTY. REQ.	ITEM	PART NO.	DESCRIPTION	SYMBOL
LIST OF MATERIAL				
THE TECHNICAL MATERIEL CORP. MAMARONECK, NEW YORK BRACKET, XFMR MTS				
FINAL APPROVAL		DATE		THE TECHNICAL MATERIEL CORP. MAMARONECK, NEW YORK BRACKET, XFMR MTS
MECH. DES.		DATE		
ELECT. DES.		DATE		
CHECKED		DATE		
DRAWN		DATE		
MATERIAL		SIZE	CODE IDENT. NO.	DWG NO.
.064 ALUM		C	82679	MS6457
FINISH		SCALE		ISSUE
S404 YEL IRID				Ø
			SHEET	OF

1	ATSA-3	AX5176
QTY / UNIT	MODEL USED ON	ASS'Y NO.
APPLICATION		
CODE		
NOTICE TO PERSONS RECEIVING THIS DRAWING THE TECHNICAL MATERIEL CORPORATION claims proprietary right in the material disclosed hereon. This drawing is issued in confidence for engineering information only and may not be reproduced or used to manufacture anything shown hereon without permission from THE TECHNICAL MATERIEL CORPORATION to the user. This drawing is loaned for mutual assistance and is subject to recall at any time.		

UNLESS OTHERWISE SPECIFIED DIMENSIONS ARE IN INCHES AND INCLUDE CHEMICALLY APPLIED OR PLATED FINISHES

TOLERANCES ON
 DECIMALS .X ± .05
 .XX ± .01
 .XXX ± .005
 FRACTIONS ± 1/64
 ANGLES ± 0° 30'

MATERIAL .064 ALUM
 5052-H32
 FINISH S404 YEL IRID