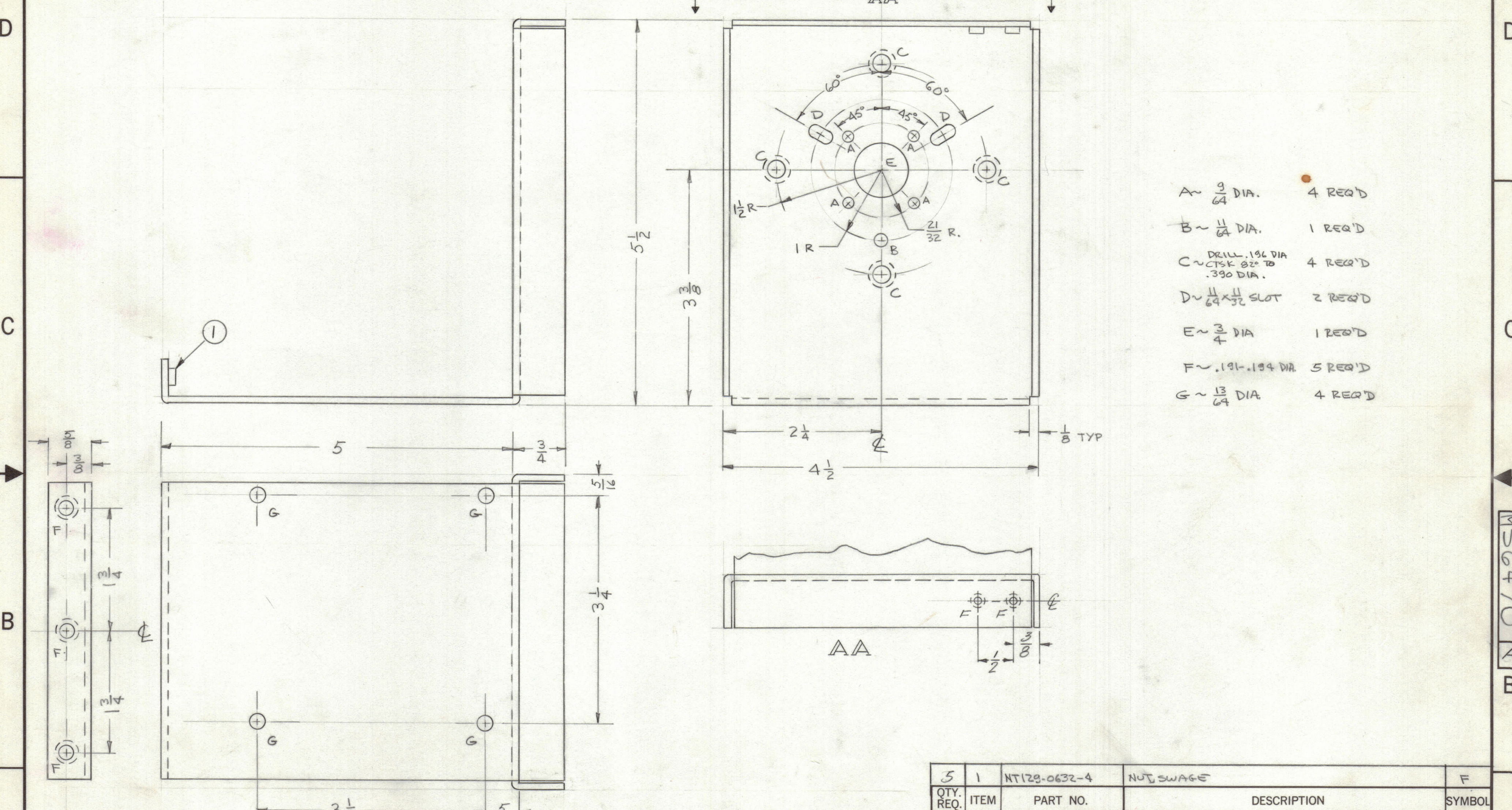


REVISIONS						
ZONE	LTR	DESCRIPTION	DATE	E.M.N.NO	DRAFT	CHKD
	Ø	ORIGINAL RELEASE FOR PRODUCTION	11/8/73		DV	
A		ADD VIEW AA	12/24/73	21118	QC	EJ



- A ~ 9/64 DIA. 4 REQ'D
- B ~ 11/64 DIA. 1 REQ'D
- C ~ DRILL .196 DIA
~ CTSK 82° TO
~ .390 DIA. 4 REQ'D
- D ~ 11/64 X 11/32 SLOT 2 REQ'D
- E ~ 3/4 DIA 1 REQ'D
- F ~ .191-.194 DIA. 5 REQ'D
- G ~ 13/64 DIA. 4 REQ'D

1	AX5176	AX5177
QTY / UNIT	MODEL USED ON	ASS'Y NO.
APPLICATION		
CODE		
NOTICE TO PERSONS RECEIVING THIS DRAWING		
THE TECHNICAL MATERIEL CORPORATION claims proprietary right in the material disclosed hereon. This drawing is issued in confidence for engineering information only and may not be reproduced or used to manufacture anything shown hereon without permission from THE TECHNICAL MATERIEL CORPORATION to the user. This drawing is loaned for mutual assistance and is subject to recall at any time.		

UNLESS OTHERWISE SPECIFIED DIMENSIONS ARE IN INCHES AND INCLUDE CHEMICALLY APPLIED OR PLATED FINISHES

TOLERANCES ON

DECIMALS	FRACTIONS
.X ± .05	± 1/64
.XX ± .01	ANGLES
.XXX ± .005	± 0° - 30'

MATERIAL .081 ALUM
5052-H32

FINISH
S404 YEL IRID

5	1	NT128-0632-4	NUT SWAGE	F
QTY. REQ.	ITEM	PART NO.	DESCRIPTION	SYMBOL
LIST OF MATERIAL				
THE TECHNICAL MATERIEL CORP. MAMARONECK, NEW YORK				
CHASSIS BANDSWITCH				
SIZE	CODE IDENT.NO.	DWG NO.	ISSUE	
C	82679	MS6470	A	
SCALE			SHEET	OF