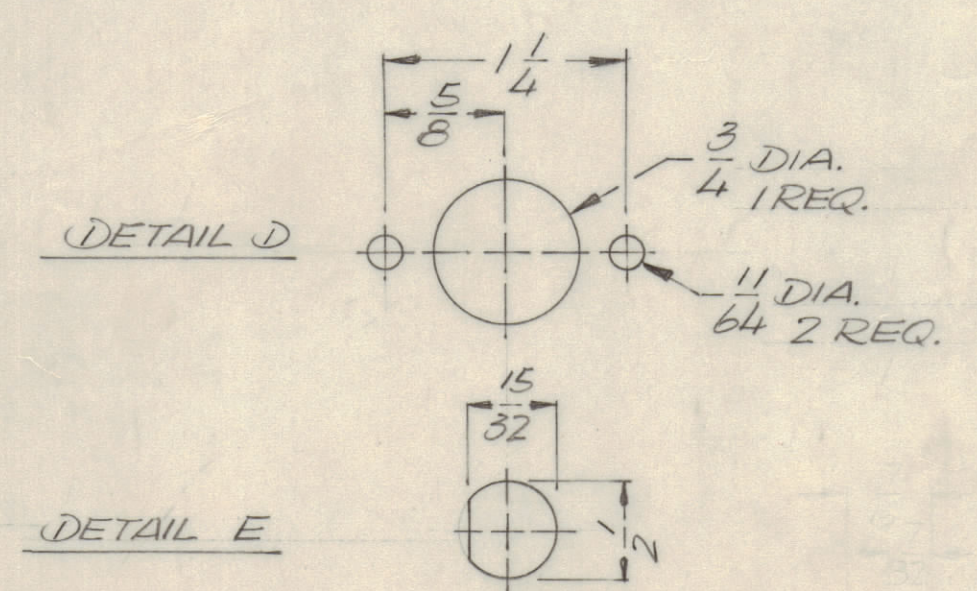
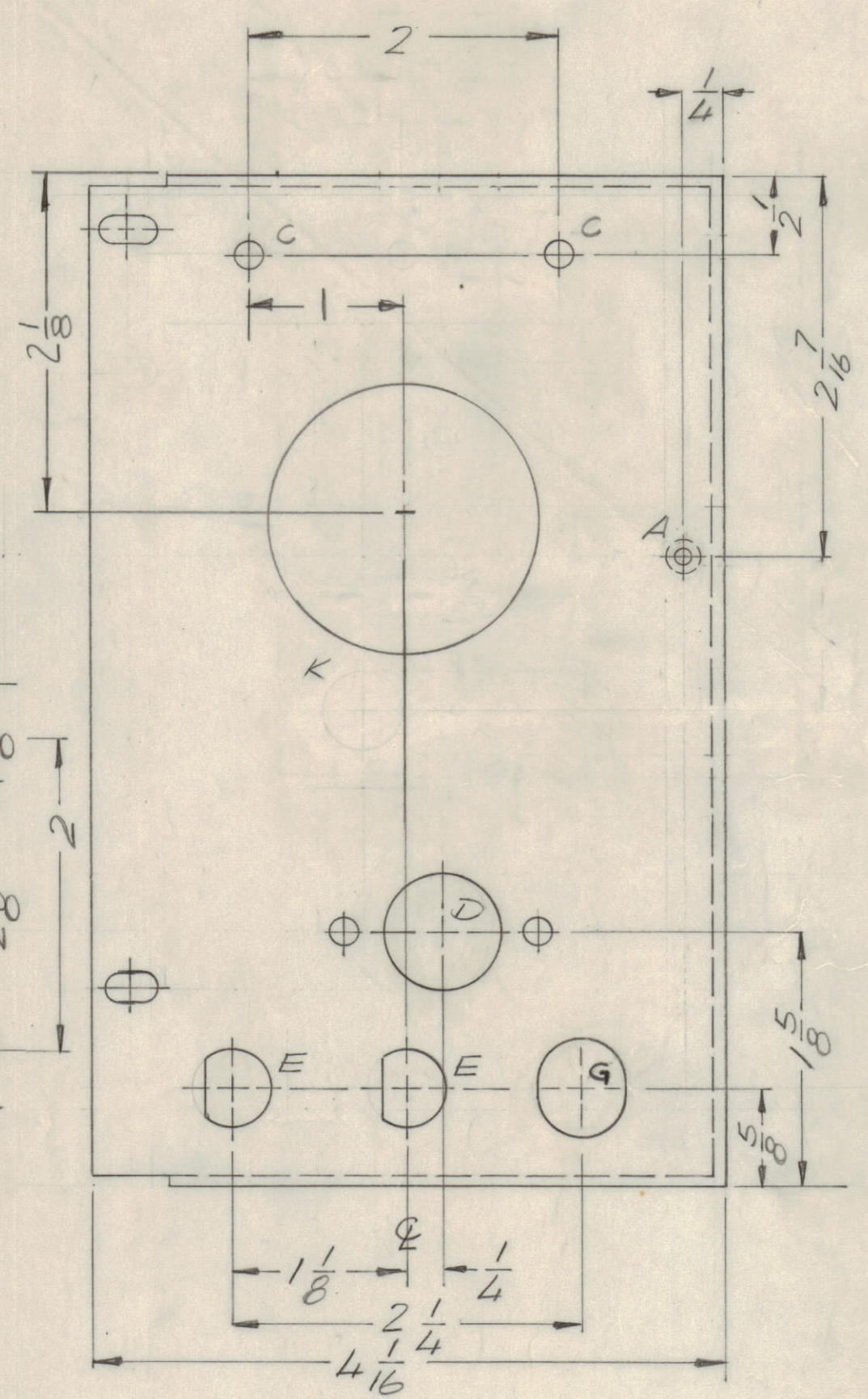
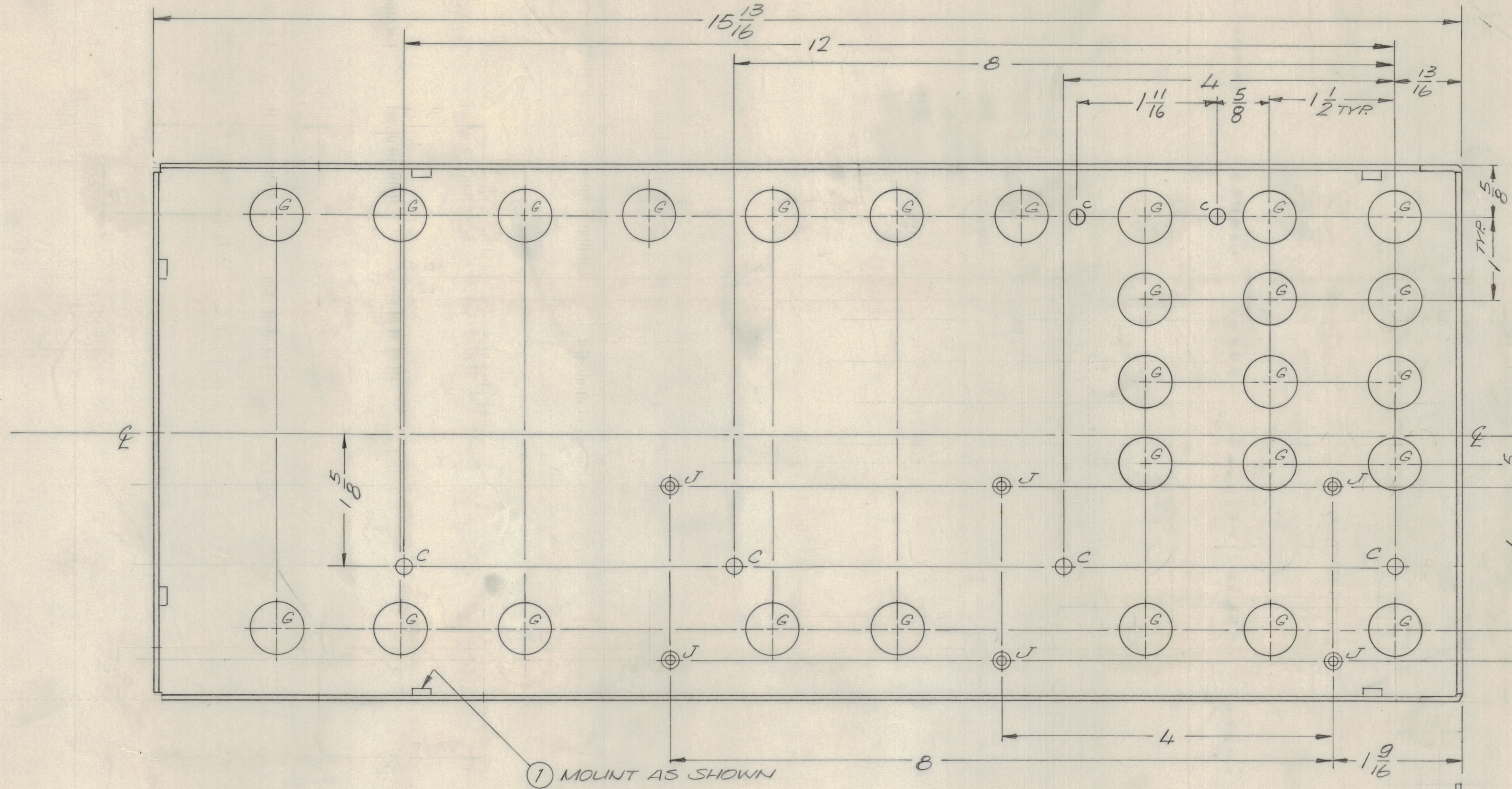
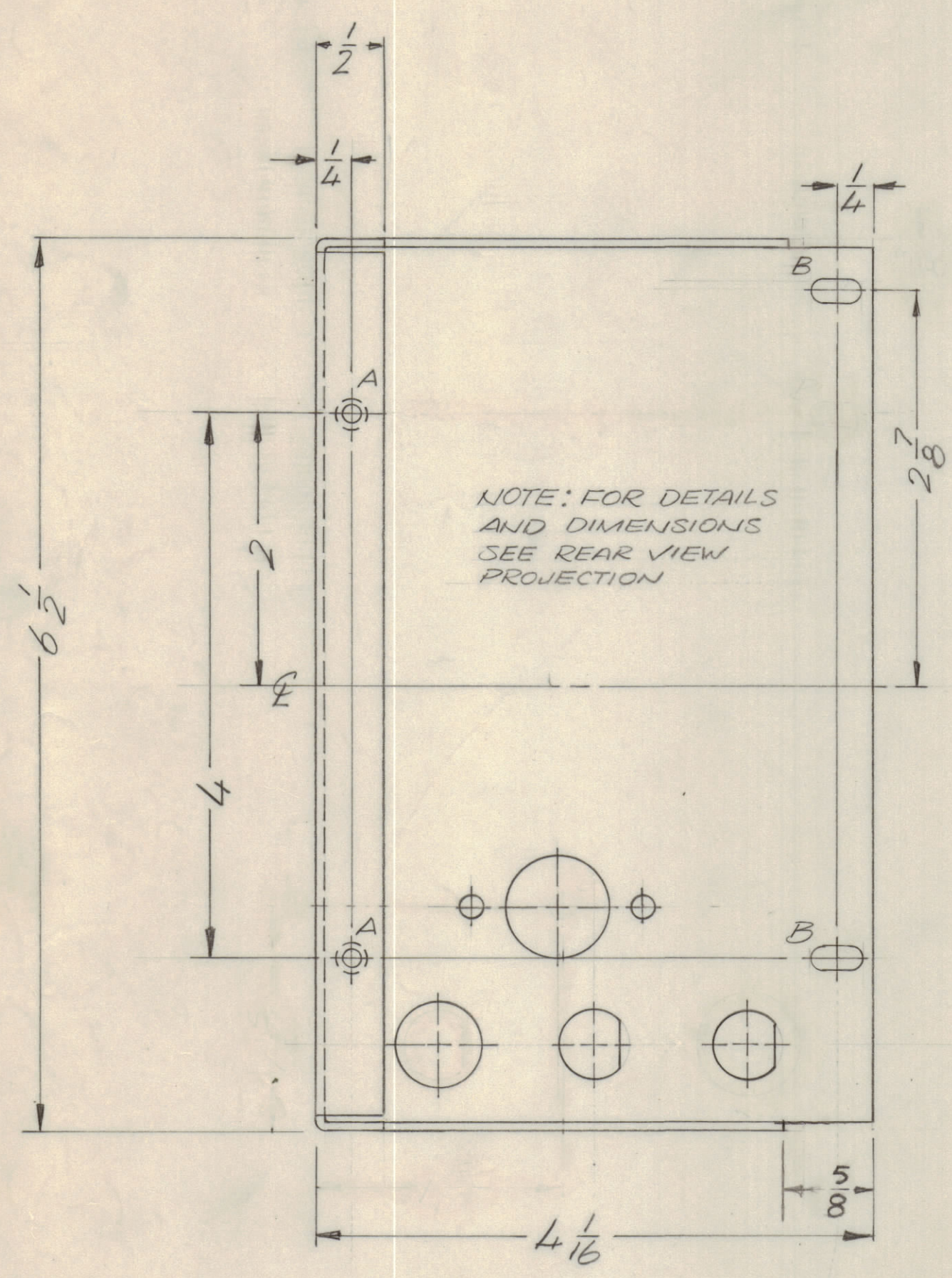


REVISIONS							
E.M.N.O.	DRAFT	CHKD	ZONE	LTR	DESCRIPTION	DATE	APPROVED
	DV				ORIGINAL RELEASE FOR PRODUCTION	11/2/73	
21180	GDL		10	A	CHANGED TWO 'L' HOLES TO 'C' HOLES	12-26-74	
21496	W/B	KP		B	TWO 'C' HOLES ADDED.	12-27-76	F.B.



HOLE DESCRIPTION REQ.

A	.191-.194	7
B	11/64 x 3/8 SLOT	2
C	3/16 DIA.	6
D	SEE D DETAIL	1
E	SEE E DETAIL	2
F	DELETED	
G	5/8 DIA.	28
H	DELETED	
J	.221-.224	6
K	1 3/4 DIA.	1

- UNLESS OTHERWISE SPECIFIED:
- USE MATERIAL THICKNESS FOR MAXIMUM RADIUS ON ALL BENDS.
  - ALL ANGULAR BENDS 90 DEGREES.
  - REMOVE ALL BURRS AND SHARP EDGES.
  - MOUNT INSERTS AFTER FINISHING.

1	GPR 110	
QTY / UNIT	MODEL USED ON	ASS'Y NO.
APPLICATION		
CODE		
NOTICE TO PERSONS RECEIVING THIS DRAWING		
THE TECHNICAL MATERIEL CORPORATION claims proprietary right in the material disclosed herein. This drawing is issued in confidence for engineering information only and may not be reproduced or used to manufacture anything shown herein without permission from THE TECHNICAL MATERIEL CORPORATION to the user. This drawing is loaned for mutual assistance and is subject to recall at any time.		

REF LD 3012

UNLESS OTHERWISE SPECIFIED DIMENSIONS ARE IN INCHES AND INCLUDE CHEMICALLY APPLIED OR PLATED FINISHES	
TOLERANCES ON	
DECIMALS	FRACTIONS
.X ± .05	± 1/64
.XX ± .01	ANGLES
.XXX ± .005	± 0°-30'
MATERIAL	.064 ALUM
	5052 H32
FINISH	SL04
	YELLOW IRIDITE

6	2	NT1290832-4	NUT PLAIN ROUND	J
7	1	NT1290632-4	NUT PLAIN ROUND	A
QTY. REQ.	ITEM	PART NO.	DESCRIPTION	SYMBOL

F. BUDETTI	
FINAL APPROVAL	DATE
MECH. DES.	DATE
ELECT. DES.	DATE
CHECKED	DATE
DRAWN	DATE

LIST OF MATERIAL  
THE TECHNICAL MATERIEL CORP.  
MAMARONECK, NEW YORK

PLATE, LEFT SIDE			
SIZE	CODE	IDENT NO.	DWG NO.
D	82679	MS 6484	B
SCALE	1:1	SHEET	OF