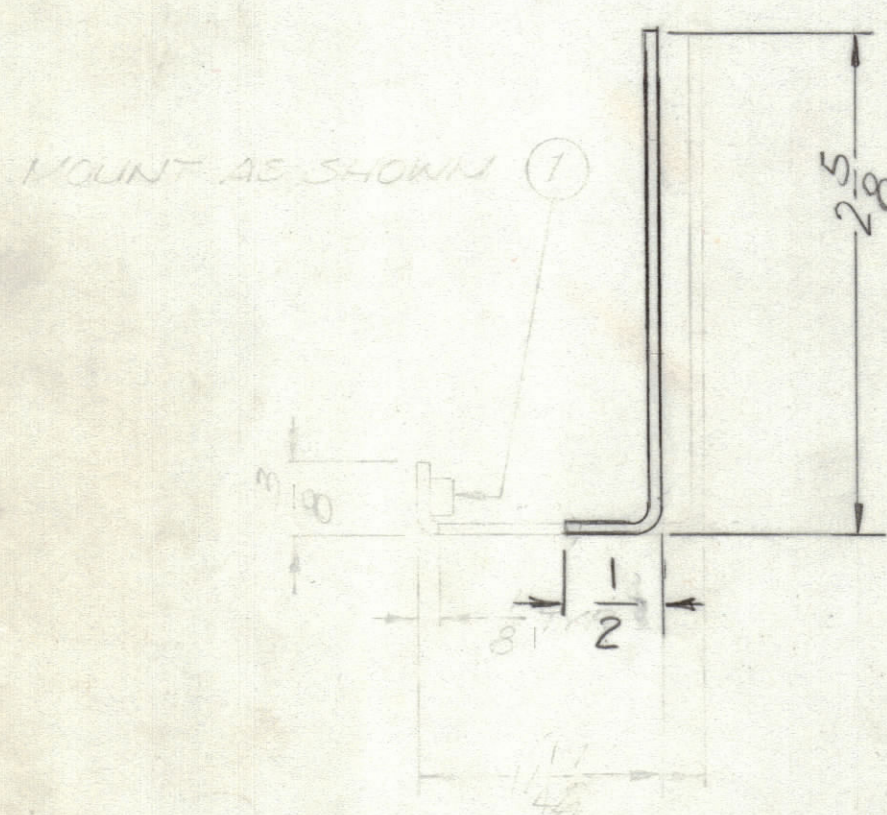
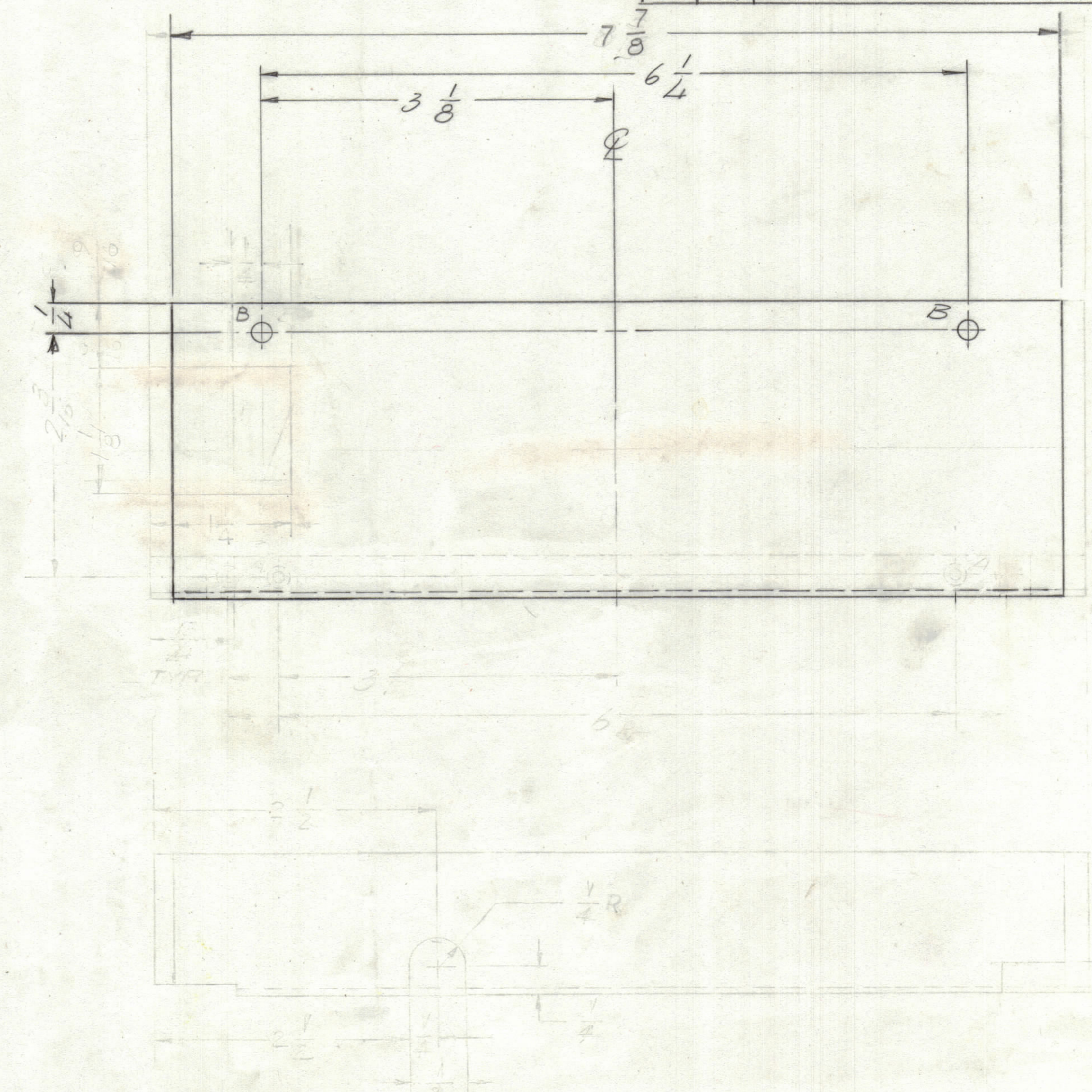


# ENGINEERING SKETCH

NOT FOR PRODUCTION

REVISIONS						
ZONE	LTR	DESCRIPTION	DATE	EMN#	DRAFT	CHKD.
	Ø	ORIGINAL RELEASE	1-25-77		G.E.	

REVISIONS						
ZONE	LTR	DESCRIPTION	DATE	E.M.N.NO	DRAFT	CHKD
	X	OVERALL WAS 8 5/16	4/27/73		GE	
	X1	LIP LENGTH REDUCED - 1/4 WAS 1/2	6/22/73		GE	
	X3	BOTTOM VIEW WITH NOTCH & CUT OUT 1" X 1/2 ADDED	6-13-74		GDL	
	X4	DIM 1 1/8 WAS 1, 1/4 WA 1/2	6-27-74		GDL	
	X5	DIM 7 7/8 WAS 8 3/16. NOTCH DELETED ON THE BOTTOM & ADD TO THE RIGHT	8-26-74		GDL	
	X6	1 1/4 X 1/8 NOTCH DELETED	6-5-78		GDL	
	X7	TWO NT 129 0632 REMD. DIM 1/2 WAS 1/4	1-10-78		GDL	



HOLE DESCRIPTION REQ.		
A	.191 - .194	2
B	1/16 DIA.	2

QTY / UNIT	MODEL USED ON	ASS'Y NO.
1	GPR110	BMA515
APPLICATION		
CODE		

NOTICE TO PERSONS RECEIVING THIS DRAWING  
 THE TECHNICAL MATERIEL CORPORATION claims proprietary right in the material disclosed hereon. This drawing is issued in confidence for engineering information only and may not be reproduced or used to manufacture anything shown hereon without permission from THE TECHNICAL MATERIEL CORPORATION to the user. This drawing is loaned for mutual assistance and is subject to recall at any time.

UNLESS OTHERWISE SPECIFIED DIMENSIONS ARE IN INCHES AND INCLUDE CHEMICALLY APPLIED OR PLATED FINISHES

TOLERANCES ON  
 DECIMALS .X ± .05  
 .XX ± .01  
 .XXX ± .005  
 FRACTIONS ± 1/64  
 ANGLES ± 0° -30'

MATERIAL .051 ALUM 5052 H 32  
 FINISH S404 YEL. IRIDITE

QTY. REQ.	ITEM	PART NO.	DESCRIPTION	SYMBOL	
LIST OF MATERIAL					
FINAL APPROVAL		DATE	<b>THE TECHNICAL MATERIEL CORP.</b> MAMARONECK, NEW YORK  SHIELD, REAR		
MECH. DES.		DATE			
ELECT. DES.		DATE			
CHECKED		DATE			
DRAWN		DATE	SIZE CODE IDENT. NO. DWG NO. ISSUE		
GE		4/11/73	C	82679 MS 6491	Ø
SCALE 1:1			SHEET OF		