

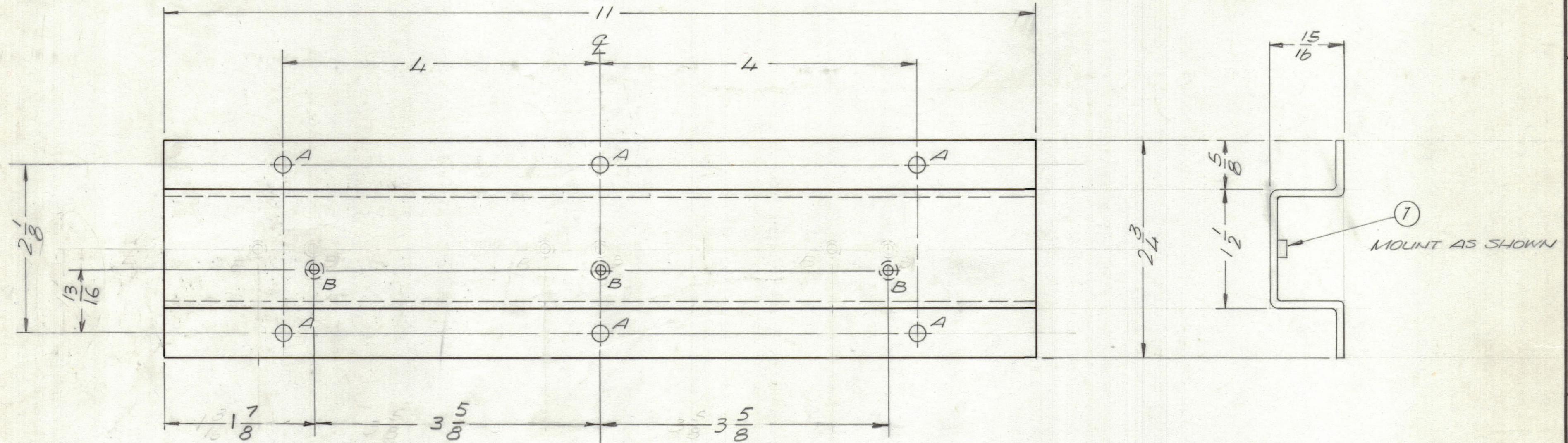
ENGINEERING SKETCH

NOT FOR PRODUCTION

REVISIONS

ZONE	LTR	DESCRIPTION	DATE	E.M.N.NO	DRAFT	CHKD	APPD
X1		.13/16 WAS 1/16 AND 1-7/8 WAS 1 3/16	5-9-75			S.D.L.	
Ø		ORIGINAL REL. FOR PROD.	1-17-77				*

TYPE	DIMENSIONS
PART NO.	A
MS6503-1	1-9/16
MS6503-2	1-13/16



HOLE DESCRIPTION REQ.

- A — 13/64 DIA. — 6
- B — .221-.224 DIA. — 3

DIMENS.

- UNLESS OTHERWISE SPECIFIED:
- USE MATERIAL THICKNESS FOR MAXIMUM RADIUS ON ALL BENDS.
 - ALL ANGULAR BENDS 90 DEGREES.
 - REMOVE ALL BURRS AND SHARP EDGES.
 - MOUNT INSERTS AFTER FINISHING.

QTY / UNIT	MODEL USED ON	ASS'Y NO.
2	GPR 110	
APPLICATION		
CODE		

NOTICE TO PERSONS RECEIVING THIS DRAWING
 THE TECHNICAL MATERIEL CORPORATION claims proprietary right in the material disclosed hereon. This drawing is issued in confidence for engineering information only and may not be reproduced or used to manufacture anything shown hereon without permission from THE TECHNICAL MATERIEL CORPORATION to the user. This drawing is loaned for mutual assistance and is subject to recall at any time.

UNLESS OTHERWISE SPECIFIED DIMENSIONS ARE IN INCHES AND INCLUDE CHEMICALLY APPLIED OR PLATED FINISHES

TOLERANCES ON

DECIMALS	FRACTIONS
.X ± .05	± 1/64
.XX ± .01	ANGLES
.XXX ± .005	± 0° -30'

MATERIAL
 .081 ALUM 5052 H32

FINISH
 SH04 YEL. IRIDITE

QTY. REQ.	ITEM	PART NO.	DESCRIPTION	SYMBOL
3	1	NT1290832	NUT, ROUND	B

F. BUDETTI LIST OF MATERIAL

FINAL APPROVAL * *0803* DATE 1/10/77

MECH. DES. DATE

ELECT. DES. DATE

CHECKED DATE

DRAWN *9E* DATE 9/29/73

THE TECHNICAL MATERIEL CORP.
 MAMARONECK, NEW YORK

BRACKET, SLIDE MOUNT
 (FOR RACK MT. USE ONLY)

SIZE	CODE IDENT. NO.	DWG NO.	ISSUE
C	82679	MS 6503-	Ø

SCALE 1:1 SHEET OF