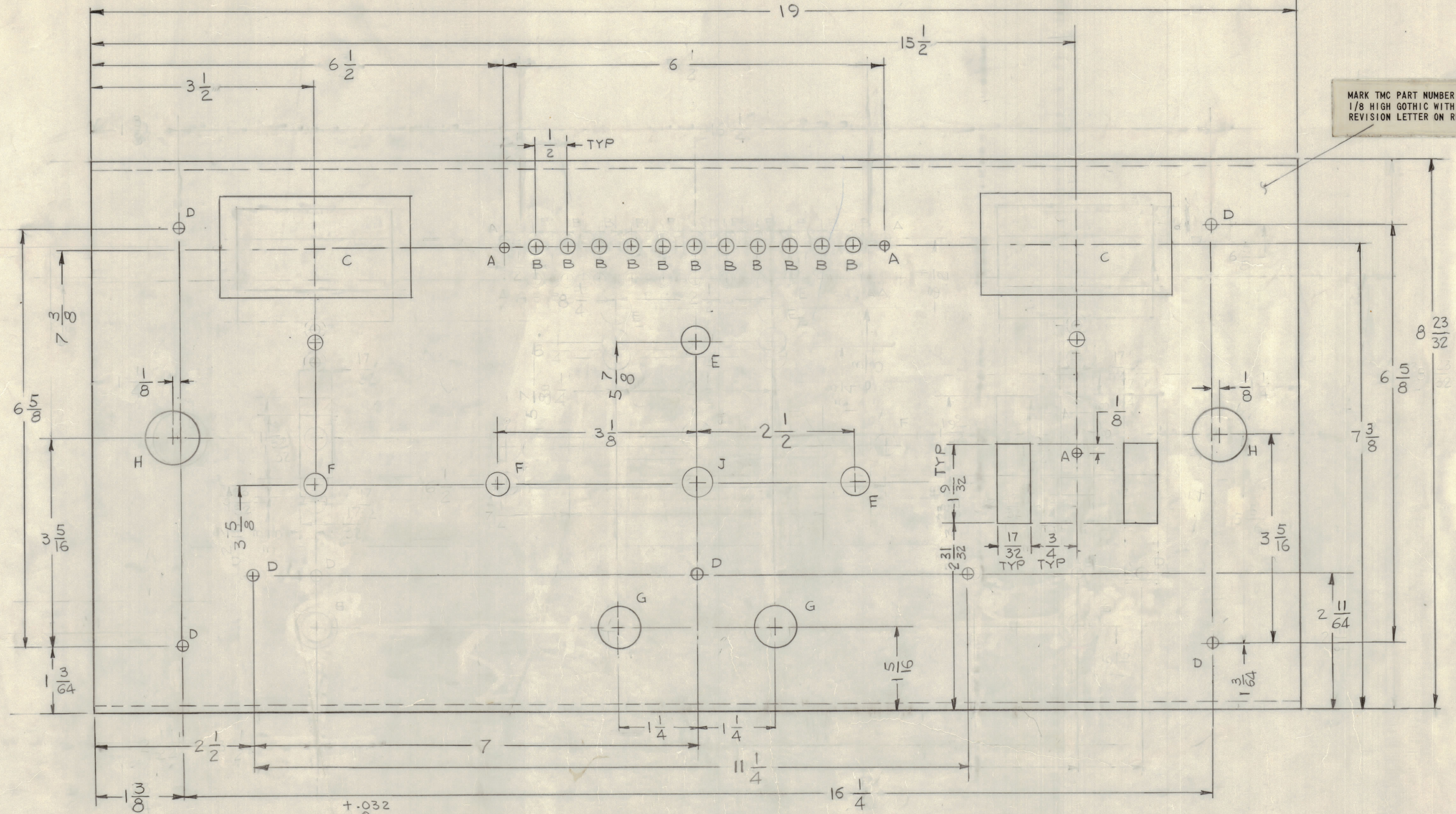
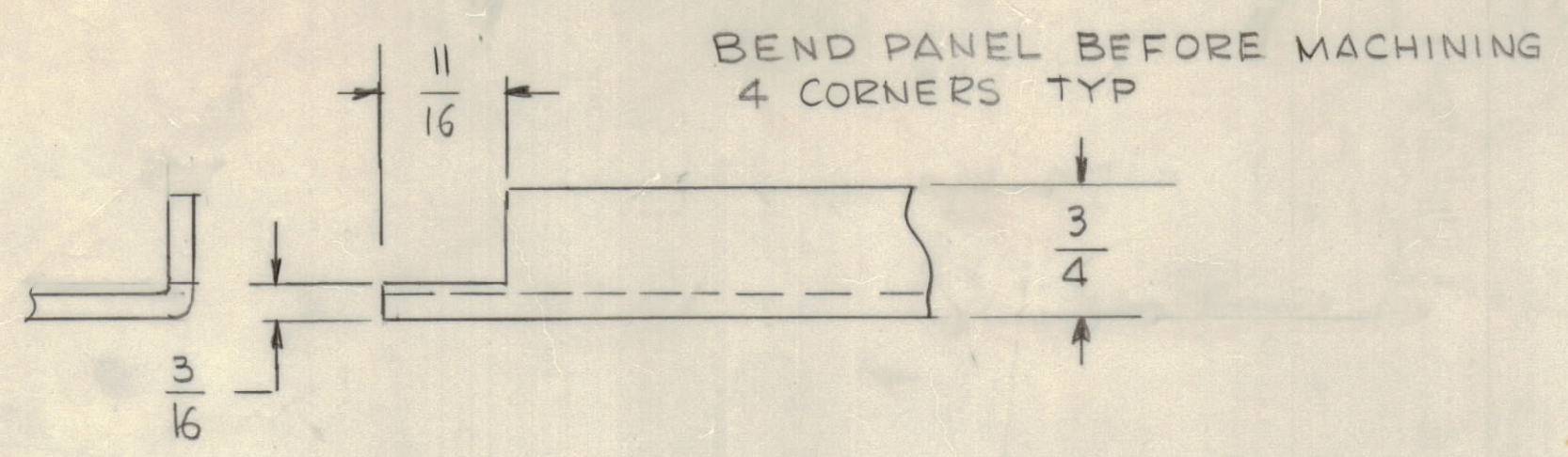


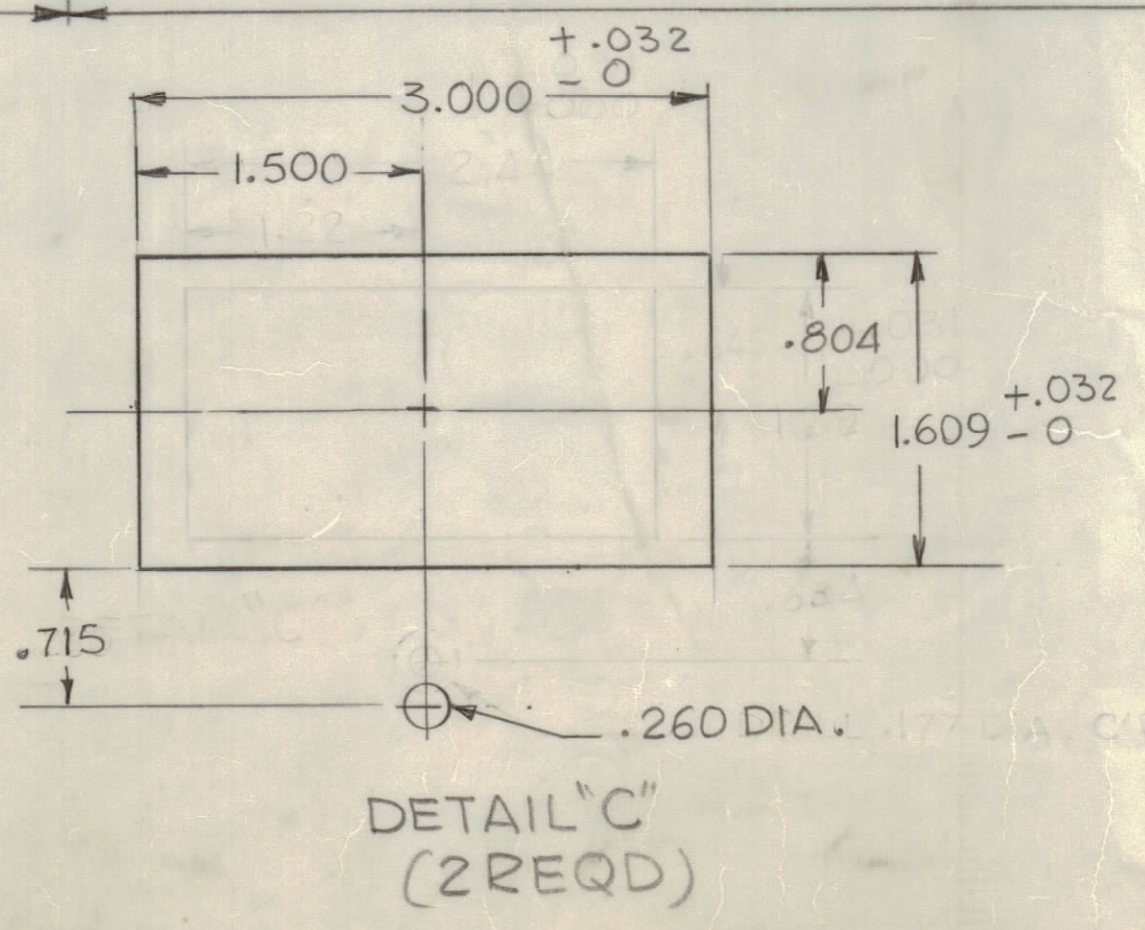
REVISIONS							
E.M.N.O	DRAFT	CHKD	ZONE	LTR	DESCRIPTION	DATE	APPROVED
				X1	DIM 2 1/2 ADD	5-17-74	
				X2	TWO "E" HOLES RELOCATED	5-19-74	
				X3	"F" HOLE & DIM 3" ADDED	7-16-74	
				X4	REVS X1, X2 & X3 WERE "A", "B" & "C" REVS. ONE "F" HOLE RELOCATED DIM 3 1/8 WAS 3	12-6-74	
					ORIGINAL RELEASE FOR PRODUCTION	3-13-75	



- UNLESS OTHERWISE SPECIFIED:
- USE MATERIAL THICKNESS FOR MAXIMUM RADIUS ON ALL BENDS.
  - ALL ANGULAR BENDS 90 DEGREES.
  - REMOVE ALL BURRS AND SHARP EDGES.

- FINISH NOTES:
- S104 - IRIDITE 14-2 AL-COAT.
  - S114 - ZINC CHROMATE PRIMER } FRONT AND EDGES ONLY
  - S115 - SMOOTH GRAY ENAMEL } OR PRIME AND PAINT PER CUSTOMER'S SPECIFICATIONS

HOLES	DESCRIPTION	REQ'D
A	11/64 DIA	3
B	1/4 DIA	11
C	SEE DETAIL	2
D	13/64 DIA	7
E	15/32 DIA	2
F	3/8 DIA	2
G	11/16 DIA	2
H	7/8 DIA	2
J	1/2 DIA	1



1	TMA 1K	BMA-521
QTY / UNIT	MODEL USED ON	ASSY NO.
APPLICATION		
CODE		
NOTICE TO PERSONS RECEIVING THIS DRAWING		
THE TECHNICAL MATERIEL CORPORATION claims proprietary right in the material disclosed herein. This drawing is issued in confidence for engineering information only and may not be reproduced or used to manufacture anything shown hereon without permission from THE TECHNICAL MATERIEL CORPORATION to the user. This drawing is loaned for mutual assistance and is subject to recall at any time.		

REF: LD 3023	QTY. REQ.	ITEM	PART NO.	DESCRIPTION	SYMBOL
LIST OF MATERIAL					
UNLESS OTHERWISE SPECIFIED DIMENSIONS ARE IN INCHES AND INCLUDE CHEMICALLY APPLIED OR PLATED FINISHES					
TOLERANCES ON		FINAL APPROVAL			
DECIMALS		DATE			
FRACTIONS		3/13/74			
X ± .05		MECH. DES.			
XX ± .01		F. IANNUZZI			
XXX ± .005		DATE			
ANGLES		12-13-74			
± 0° -30°		ELECT. DES.			
CHECKED		DATE			
F. IANNUZZI		12-14-74			
DRAWN		DATE			
G. DeLuca					
MATERIAL		SIZE			
1/8 THK ALUM		CODE IDENT NO.			
5052-H32		DWG NO.			
FINISH		ISSUE			
AS NOTES		D 82679 MS 6535			
SCALE		SHEET OF			

THE TECHNICAL MATERIEL CORP.  
MAMARONECK, NEW YORK

FRONT PANEL

SCALE SHEET OF