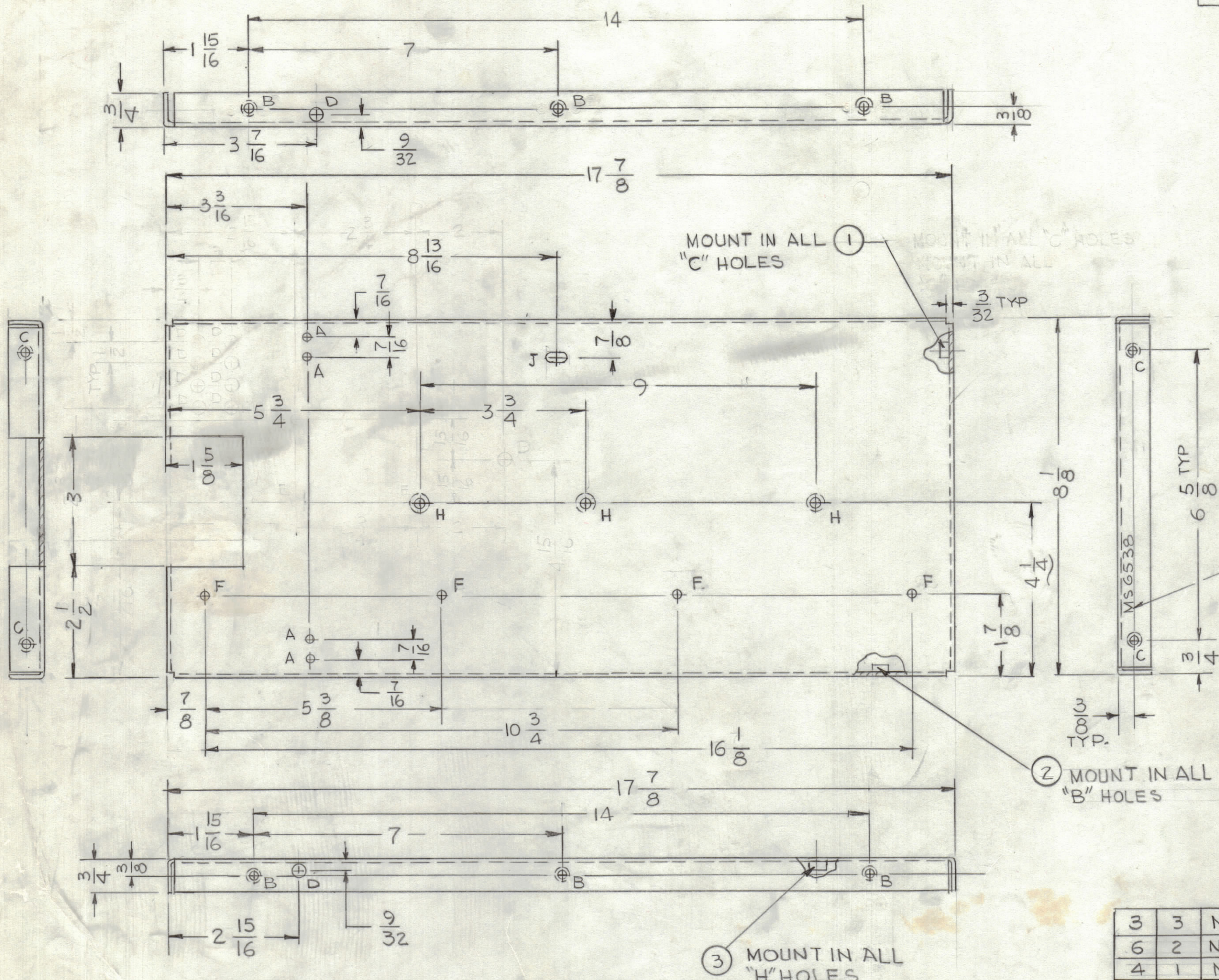
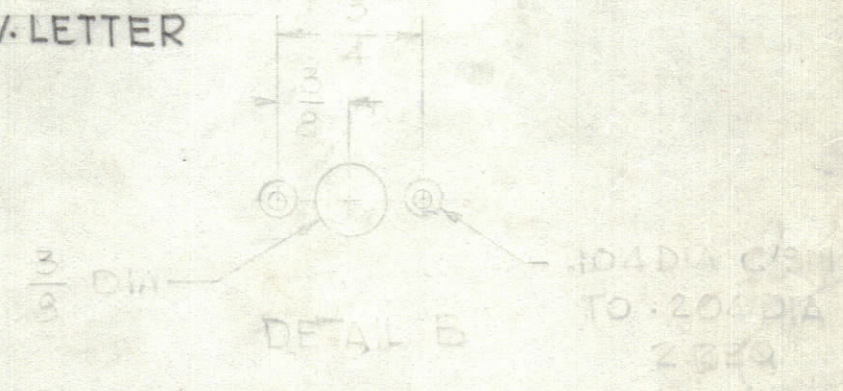


REVISIONS							
ZONE	LTR	DESCRIPTION	DATE	E.M.N.NO	DRAFT	CHKD	APPD
	X1	DIMS 4 1/4 WAS 4					
4C 4B	X2	DIMS 2 1/2 WAS 3 3/16 & 3" WAS 2 3/8	7-7-74		CDL		
	Ø	ORIGINAL RELEASE FOR PRODUCTION	3-13-75		CL		



HOLES	DESCRIPTION	REQ
A	9/64 DIA	4
B	.191-.194 DIA	6
C	.221-.224 DIA	4
D	5/16 DIA	3
E	1/4 DIA	4
F	13/64 DIA	4
G	.191-.194 DIA	3
H	.250-.254 DIA	3
J	SLOT 1/2 X 1/4	1

MARK TMC P/N
1/8 HIGH GOTHIC
W/LATEST REV. LETTER



QTY. REQ.	ITEM	PART NO.	DESCRIPTION	SYMBOL
3	3	NT 129-1032-4	NUT, PLAIN ROUND	H
6	2	NT 129-0632-4	NUT, PLAIN ROUND	B
4	1	NT 129-0832-4	NUT, PLAIN ROUND	C

LIST OF MATERIAL
THE TECHNICAL MATERIEL CORP.
MAMARONECK, NEW YORK

UNLESS OTHERWISE SPECIFIED:
1. USE MATERIAL THICKNESS FOR MAXIMUM RADIUS ON ALL BENDS.
2. ALL ANGULAR BENDS 90 DEGREES.
3. REMOVE ALL BURRS AND SHARP EDGES.
4. MOUNT INSERTS AFTER FINISHING.

QTY / UNIT	MODEL USED ON	ASS'Y NO.
1	TMA-1K	BMA-520

UNLESS OTHERWISE SPECIFIED DIMENSIONS ARE IN INCHES AND INCLUDE CHEMICALLY APPLIED OR PLATED FINISHES

TOLERANCES ON
DECIMALS .X ± .05
.XX ± .01
.XXX ± .005
FRACTIONS ± 1/64
ANGLES ± 0° -30'

FINAL APPROVAL	DATE
<i>F. Iannuzzi</i>	3/13/75
MECH. DES.	DATE
<i>F. Iannuzzi</i>	12-13-74
ELECT. DES.	DATE
CHECKED	DATE
<i>G. DeLuca</i>	12-14-74
DRAWN	DATE

MATERIAL .064 THK ALUMINUM 5052-H32
FINISH 5404 YEL IRIDITE

SIZE	CODE IDENT. NO.	DWG NO.	ISSUE
C	82679	MS 6538	Ø
SCALE	1:2	SHEET	OF

NOTICE TO PERSONS RECEIVING THIS DRAWING
THE TECHNICAL MATERIEL CORPORATION claims proprietary right in the material disclosed hereon. This drawing is issued in confidence for engineering information only and may not be reproduced or used to manufacture anything shown hereon without permission from THE TECHNICAL MATERIEL CORPORATION to the user. This drawing is loaned for mutual assistance and is subject to recall at any time.