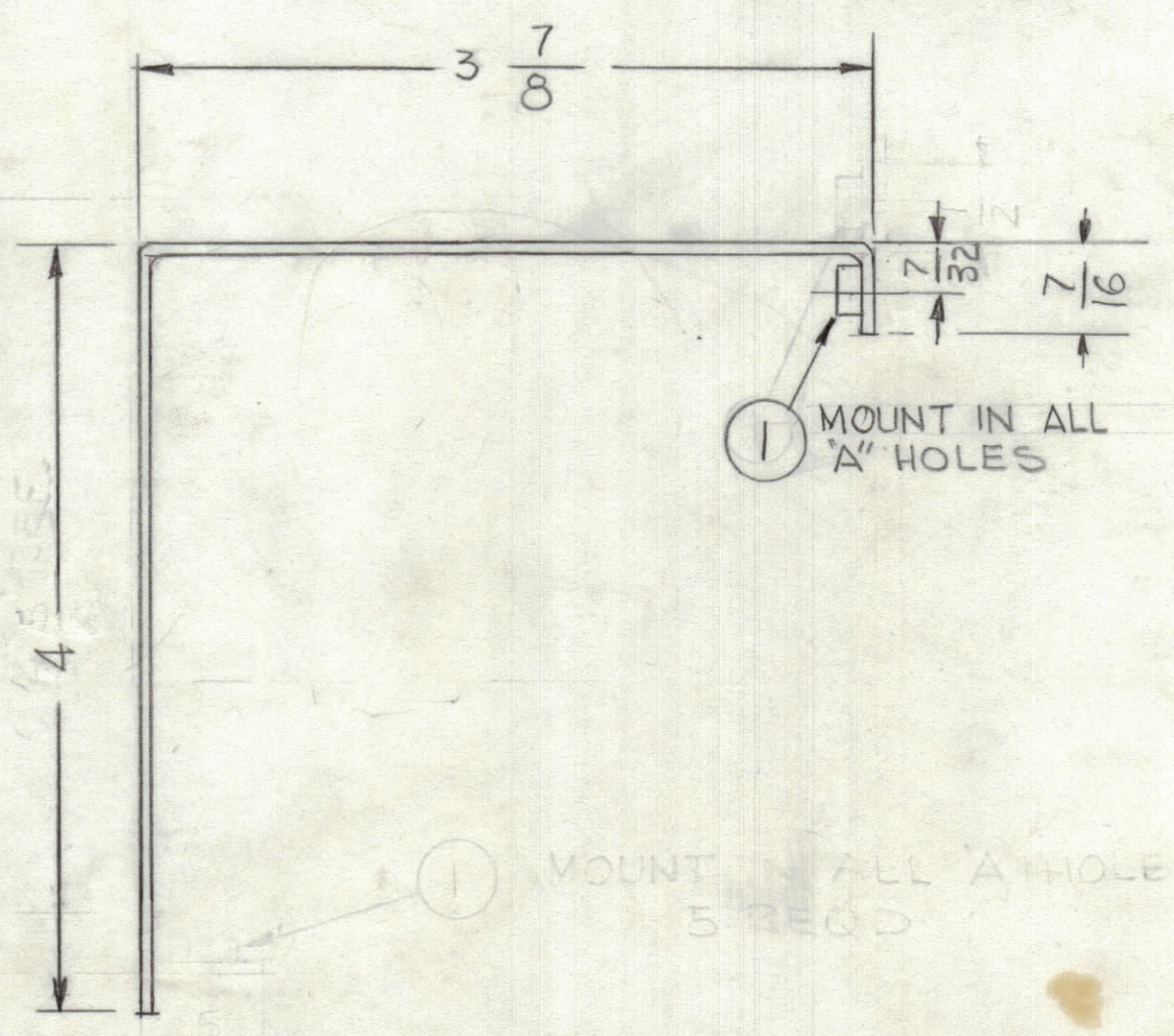
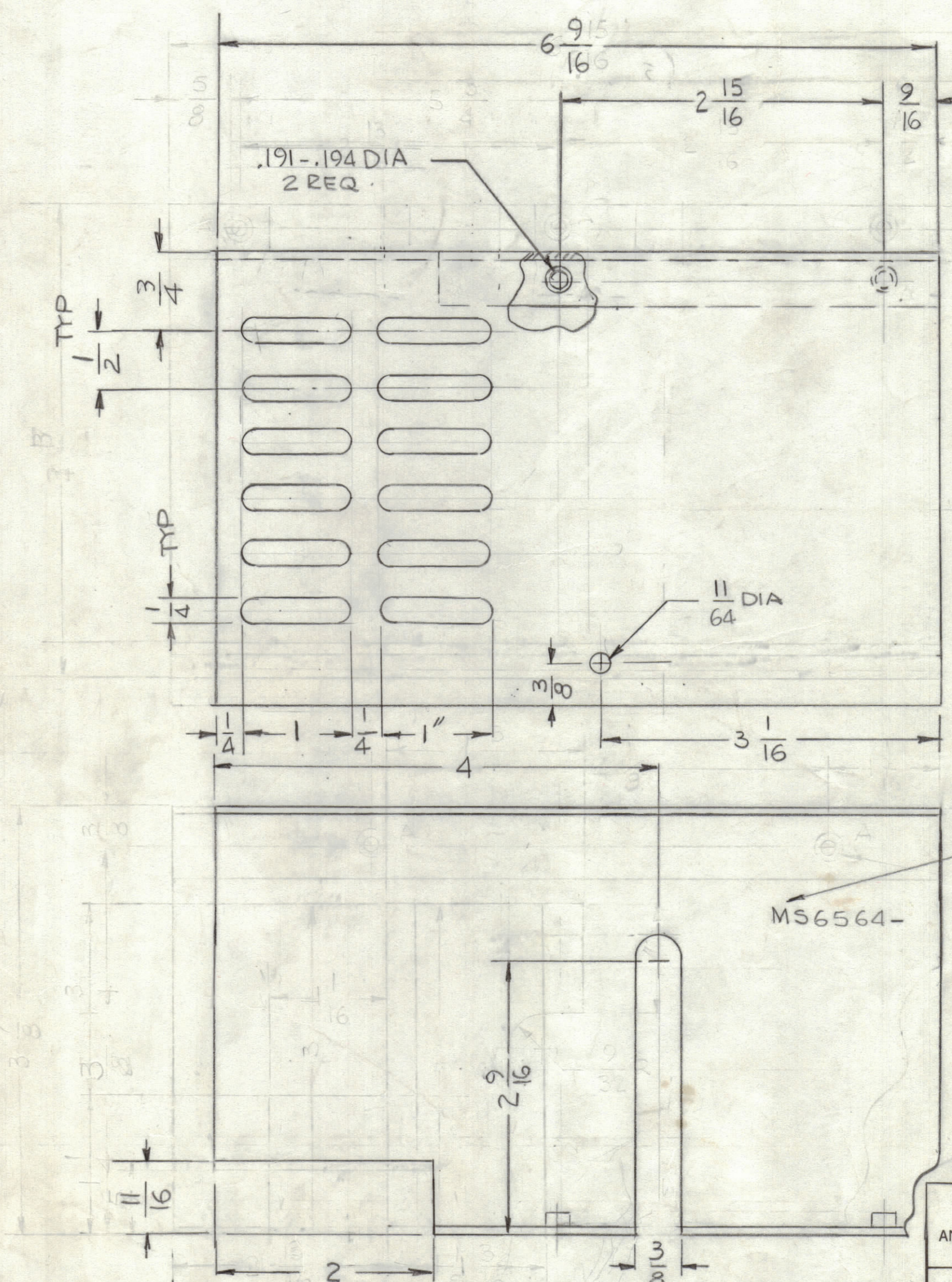


REVISIONS						
ZONE	LTR	DESCRIPTION	DATE	E.M.N.NO	DRAFT	CHKD APPD
	X1	CUT OUT MODIFIED	10-2-74			
	X2	REVISED & UPDATED	11-23-74			
	Ø	ORIGINAL RELEASE FOR PRODUCTION	1/8/75		CL	
	A	SLOTS AREA ADDED	9-10-78	21291	EDL	
	B	ADD. ONE 11/64 DIA HOLE	5-24-76	21376	G.D.L.	



UNLESS OTHERWISE SPECIFIED:

1. USE MATERIAL THICKNESS FOR MAXIMUM RADIUS ON ALL BENDS.
2. ALL ANGULAR BENDS 90 DEGREES.
3. REMOVE ALL BURRS AND SHARP EDGES.
4. MOUNT INSERTS AFTER FINISHING.

MARK TMC P/NO 1/8 HIGH GOTHIC W/LATEST REV. LETTER.

QTY. REQ.	ITEM	PART NO.	DESCRIPTION	SYMBOL
2	1	NT1290632-4	NUT PLAIN ROUND	

LIST OF MATERIAL			
FINAL APPROVAL	DATE	THE TECHNICAL MATERIEL CORP.	
<i>088</i>	12/31/74	MAMARONECK, NEW YORK	
MECH. DES.	DATE	SHIELD, FAN	
F. IANNUZZI	12-31-74		
ELECT. DES.	DATE		
CHECKED	DATE		
DRAWN	DATE		
G. DeLuca	4-18-74		

QTY / UNIT	MODEL USED ON	ASS'Y NO.
1	HFL-100	
APPLICATION		
CODE		
<small>NOTICE TO PERSONS RECEIVING THIS DRAWING</small> <small>THE TECHNICAL MATERIEL CORPORATION claims proprietary right in the material disclosed hereon. This drawing is issued in confidence for engineering information only and may not be reproduced or used to manufacture anything shown hereon without permission from THE TECHNICAL MATERIEL CORPORATION to the user. This drawing is loaned for mutual assistance and is subject to recall at any time.</small>		

UNLESS OTHERWISE SPECIFIED DIMENSIONS ARE IN INCHES AND INCLUDE CHEMICALLY APPLIED OR PLATED FINISHES

TOLERANCES ON

DECIMALS	FRACTIONS
.X ± .05	± 1/64
.XX ± .01	ANGLES
.XXX ± .005	± 0° -30'

MATERIAL .051 THK ALUM 5052-H32

FINISH S404 YEL IRIDITE

SIZE	CODE IDENT.NO.	DWG NO.	ISSUE
C	82679	MS 6564	B
SCALE 1:1		SHEET OF	