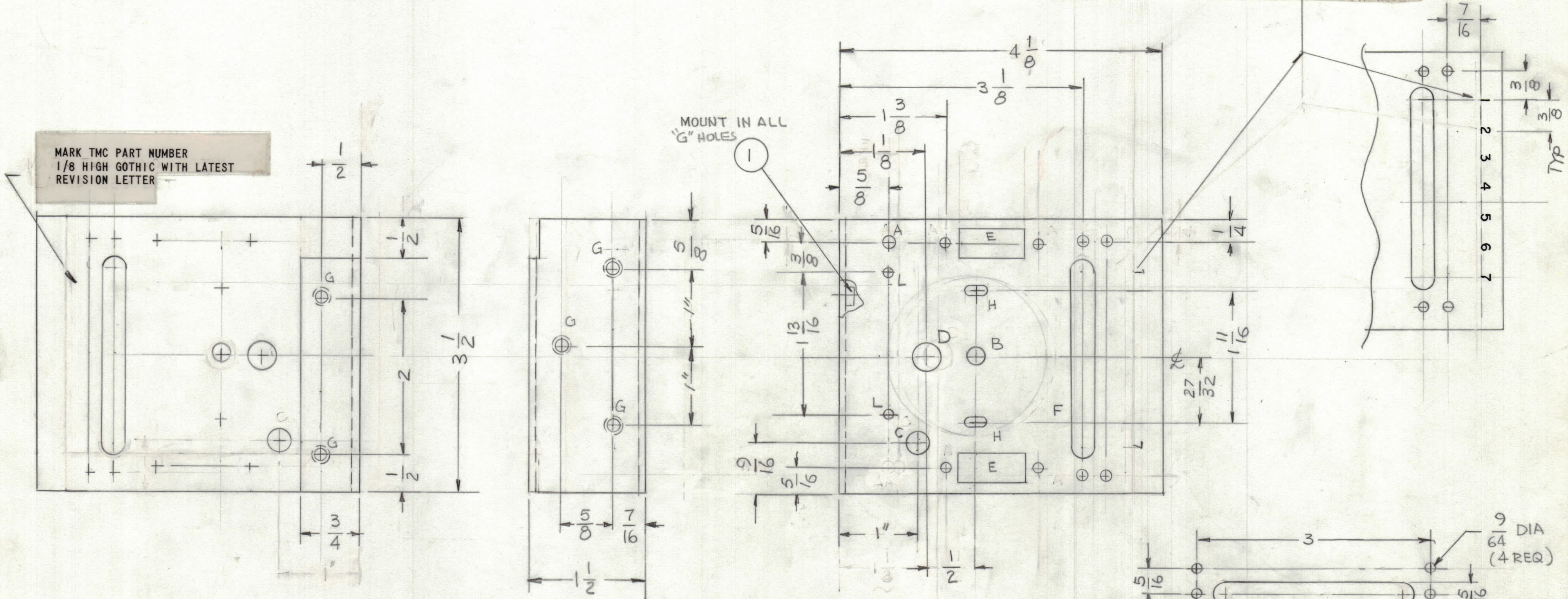


REVISIONS						
ZONE	LTR	DESCRIPTION	DATE	E.M.N.NO	DRAFT	CHKD APPD
	X	ORIG ISSUE				
		ORIGINAL RELEASE FOR PRODUCTION	5/20/75		JP	

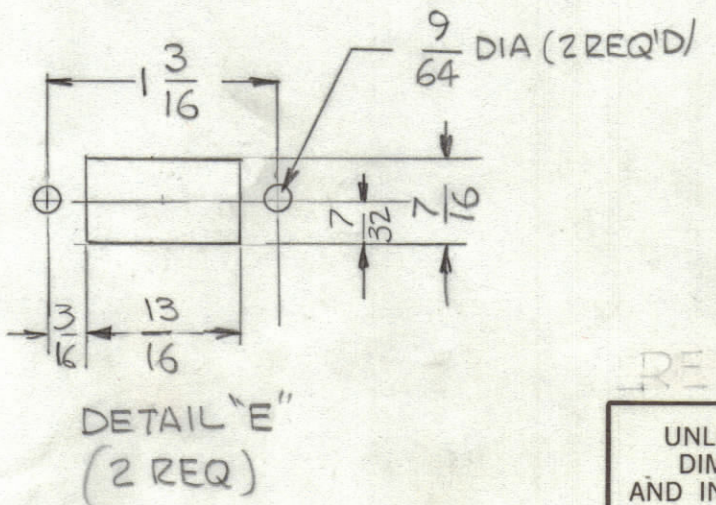
MARKING PROCESS: AS PER TMC SPECIFICATION S727  
 LETTERING: 1/8 HIGH BLACK GOTHIC, LOCATED AS SHOWN

MARK TMC PART NUMBER  
 1/8 HIGH GOTHIC WITH LATEST  
 REVISION LETTER

MOUNT IN ALL  
 "G" HOLES



HOLES	DESCRIPTION	REQ
A	11/64 DIA	2
B	1/4 DIA	1
C	5/16 DIA	1
D	3/8 DIA	1
E	SEE DETAIL	1
F	SEE DETAIL	1
G	.191-.194 DIA	5
H	SLOT 9/64 X 9/32	2
L	9/64 DIA	2



QTY. REQ.	ITEM	PART NO.	DESCRIPTION	SYMBOL
5	I	NT129-632-4	NUT PLN SPLINE	G

LIST OF MATERIAL

UNLESS OTHERWISE SPECIFIED DIMENSIONS ARE IN INCHES AND INCLUDE CHEMICALLY APPLIED OR PLATED FINISHES	FINAL APPROVAL <i>[Signature]</i>	DATE 5/1/75
TOLERANCES ON	MECH. DES. <i>[Signature]</i>	DATE 5-1-75
DECIMALS .X ± .05 .XX ± .01 .XXX ± .005	ELECT. DES.	DATE
FRACTIONS ± 1/64 ANGLES ± 0°-30'	CHECKED	DATE
MATERIAL .081THK ALUM. 5052-H32	DRAWN G. DE LUCIA	DATE 12-16-74
FINISH 5404 YEL IRIDITE		

THE TECHNICAL MATERIEL CORP. MAMARONECK, NEW YORK			
CHASSIS, BFO CONTROL			
SIZE	CODE IDENT. NO.	DWG NO.	ISSUE
C	82679	MS 6590	<i>[Signature]</i>
SCALE	1:1	SHEET	OF

- UNLESS OTHERWISE SPECIFIED:
- USE MATERIAL THICKNESS FOR MAXIMUM RADIUS ON ALL BENDS.
  - ALL ANGULAR BENDS 90 DEGREES.
  - REMOVE ALL BURRS AND SHARP EDGES.
  - MOUNT INSERTS AFTER FINISHING.

QTY / UNIT	MODEL USED ON	ASSY NO.
1	(GPR110) KIT404	BMA 524
APPLICATION		
CODE		
NOTICE TO PERSONS RECEIVING THIS DRAWING		
THE TECHNICAL MATERIEL CORPORATION claims proprietary right in the material disclosed hereon. This drawing is issued in confidence for engineering information only and may not be reproduced or used to manufacture anything shown hereon without permission from THE TECHNICAL MATERIEL CORPORATION to the user. This drawing is loaned for mutual assistance and is subject to recall at any time.		