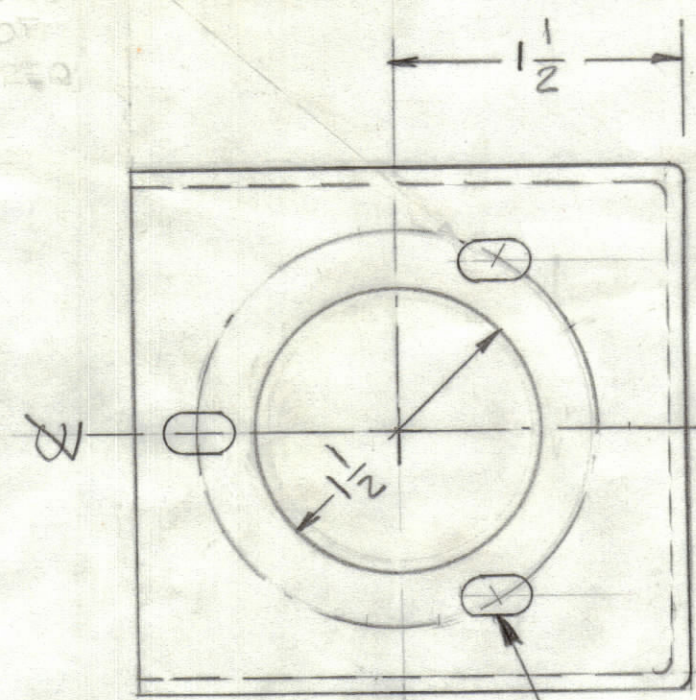
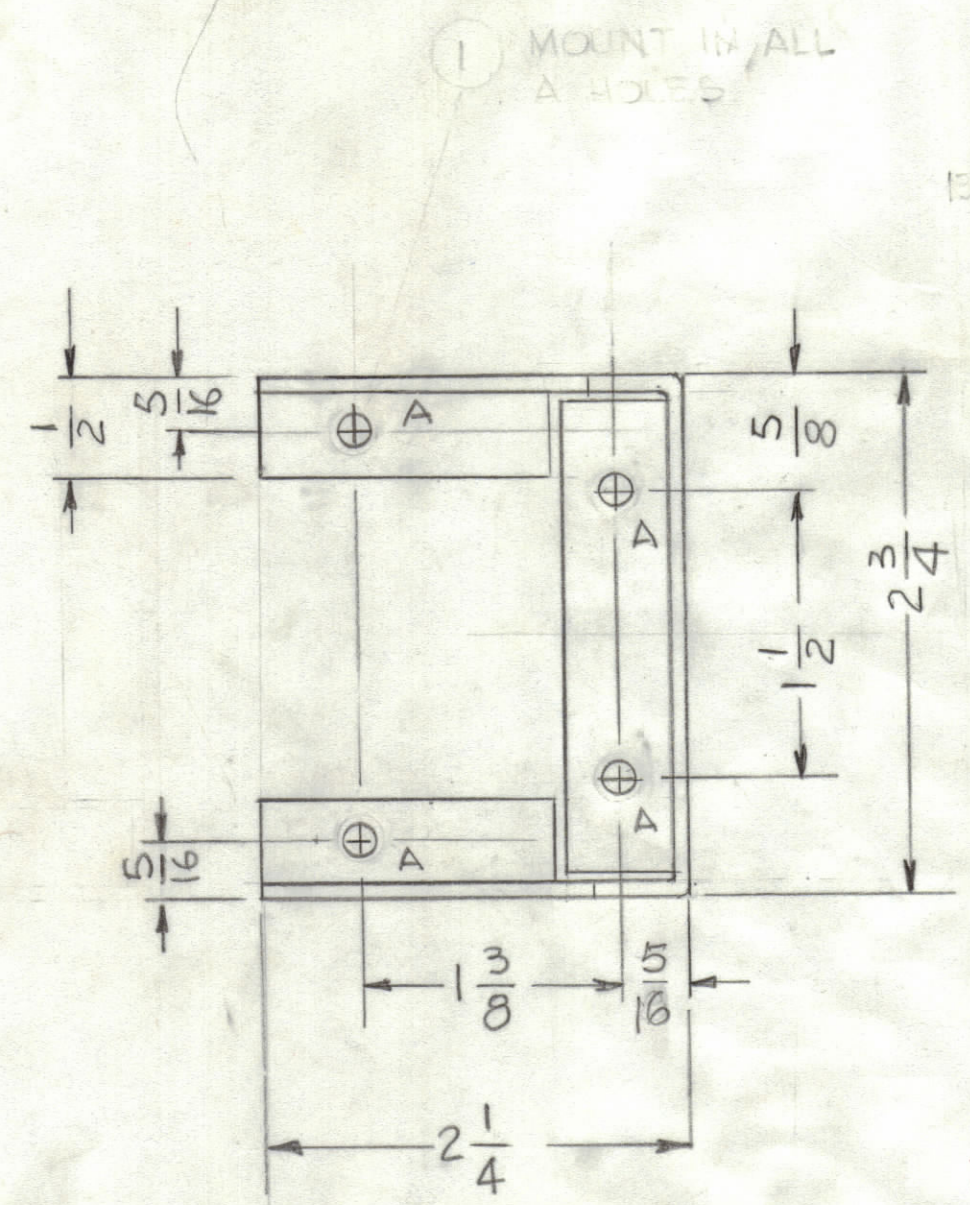


| REVISIONS |     |                  |         |          |       |           |
|-----------|-----|------------------|---------|----------|-------|-----------|
| ZONE      | LTR | DESCRIPTION      | DATE    | E.M.N.NO | DRAFT | CHKD APPD |
|           | X   | EXP RELEASE      |         |          |       |           |
|           | X1  | 5/16 WAS 3/8     | 8.25.45 |          |       |           |
|           |     | ORIGINAL RELEASE | 9-26-80 |          |       |           |



**OBSOLETE**  
 USE FOR SPARE PARTS ONLY  
 (SEE AX5218)

UNLESS OTHERWISE SPECIFIED:  
 1. USE MATERIAL THICKNESS FOR MAXIMUM RADIUS ON ALL BENDS.  
 2. ALL ANGULAR BENDS 90 DEGREES.  
 3. REMOVE ALL BURRS AND SHARP EDGES.

HOLE  
 A - 11/64 DIA 4 REQ.

MARK TMC P/NO 1/8 HIGH  
 GOTHIC W/LATEST REV  
 LETTER

|   |               |           |
|---|---------------|-----------|
| 1   | HFTA-10K ( )  | AX5196    |
| QTY / UNIT  | MODEL USED ON | ASS'Y NO. |
| APPLICATION   |               |           |
| CODE  |               |           |
| <small>NOTICE TO PERSONS RECEIVING THIS DRAWING</small><br><small>THE TECHNICAL MATERIEL CORPORATION claims proprietary right in the material disclosed hereon. This drawing is issued in confidence for engineering information only and may not be reproduced or used to manufacture anything shown hereon without permission from THE TECHNICAL MATERIEL CORPORATION to the user. This drawing is loaned for mutual assistance and is subject to recall at any time.</small> |               |           |

UNLESS OTHERWISE SPECIFIED  
 DIMENSIONS ARE IN INCHES  
 AND INCLUDE CHEMICALLY APPLIED  
 OR PLATED FINISHES

TOLERANCES ON

|             |           |
|-------------|-----------|
| DECIMALS    | FRACTIONS |
| .X ± .05    | ± 1/64    |
| .XX ± .01   | ANGLES    |
| .XXX ± .005 | ± 0° -30' |

MATERIAL .081 THK  
 ALY 5052-H32

FINISH  
 5404  
 YEL IRIDITE

| QTY. REQ.  | ITEM           | PART NO. | DESCRIPTION                         | SYMBOL |
|--|----------------|----------|-------------------------------------|--------|
| LIST OF MATERIAL   |                |          |                                     |        |
| FINAL APPROVAL <i>DL</i> DATE<br>MECH. DES. DATE<br>ELECT. DES. DATE<br>CHECKED DATE<br>DRAWN <i>G.D. LUCIA</i> DATE <i>4-2-74</i> |                |          |                                     |        |
| THE TECHNICAL MATERIEL CORP.<br>MAMARONECK, NEW YORK   |                |          |                                     |        |
| BRACKET, MTG CAPACITOR   |                |          |                                     |        |
| SIZE   | CODE IDENT.NO. | DWG NO.  | ISSUE                               |        |
| C  | 82679          | MS6616   | <input checked="" type="checkbox"/> |        |
| SCALE  | 1:1            | SHEET    | OF                                  |        |