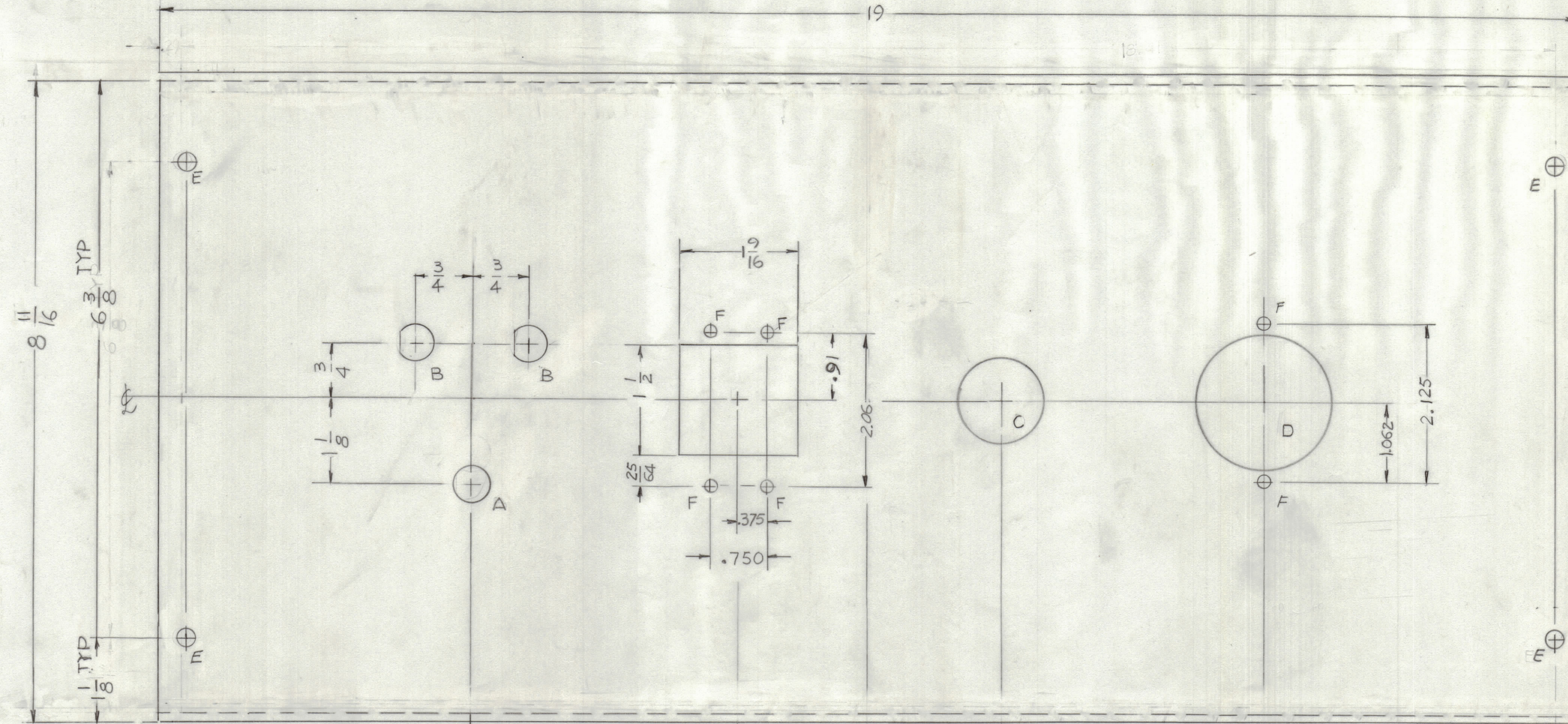
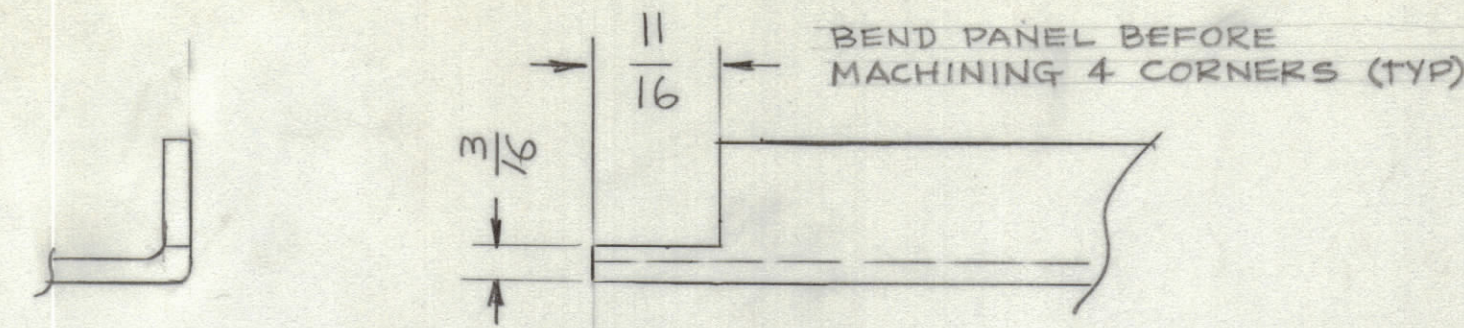


REVISIONS							
E.M.N.NO	DRAFT	CHKD	ZONE	LTR	DESCRIPTION	DATE	APPROVED
				X1	DIM 8-11/16 WAS 8-7/16 ; 1 1/8 WAS 1"	6-20-75	
	CL			Ø	ORIGINAL RELEASE FOR PRODUCTION	9/10/75	



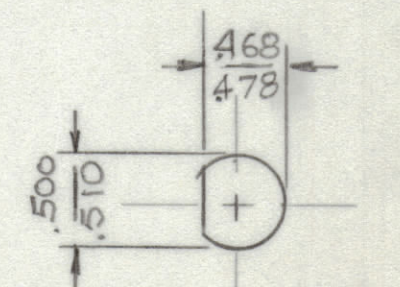
- HOLES:
- A - 1/2 DIA 1 REQ
 - B - SEE DETAIL 2REQ
 - C - 1 1/16 DIA 1 REQ
 - D - 1 3/4 DIA 1 REQ
 - E - 1/4 DIA 4REQ
 - F - 11/64 DIA 6REQ

MACHINING:

- MILL ALL EDGES.
- HOLES MUST BE DRILLED, UNLESS OTHERWISE SPECIFIED.
- LATERAL BOW OF PANEL MUST BE KEPT TO .031 TOLERANCE.
- PANEL MUST BE FREE OF ALL MACHINING MARKS, GOUGES AND SCRATCHES. IF NECESSARY, SAND FRONT OF PANEL WITH NO. 120 GRIT SANDPAPER.

FINISH NOTES:

- S404 - IRIDITE 14-2 AL-COAT.
- S114 - ZINC CHROMATE PRIMER } FRONT AND EDGES ONLY
- S115 - SMOOTH GRAY ENAMEL } OR PRIME AND PAINT PER CUSTOMER'S SPECIFICATIONS



DETAIL 'B'

REF: LD3038

TAX 5201		
QTY / UNIT	MODEL USED ON	ASS'Y NO.
APPLICATION		
CODE		
<small>NOTICE TO PERSONS RECEIVING THIS DRAWING</small> <small>THE TECHNICAL MATERIEL CORPORATION claims proprietary right in the material disclosed hereon. This drawing is issued in confidence for engineering information only and may not be reproduced or used to manufacture anything shown hereon without permission from THE TECHNICAL MATERIEL CORPORATION to the user. This drawing is loaned for mutual assistance and is subject to recall at any time.</small>		

UNLESS OTHERWISE SPECIFIED DIMENSIONS ARE IN INCHES AND INCLUDE CHEMICALLY APPLIED OR PLATED FINISHES	
TOLERANCES ON DECIMALS	FRACTIONS
.X ± .05	± 1/64
.XX ± .01	ANGLES ± 0° - 30'
.XXX ± .005	
MATERIAL 1/8 THK ALUM 5052-H32	
FINISH SEE NOTE	

QTY. REQ.	ITEM	PART NO.	DESCRIPTION	SYMBOL	
LIST OF MATERIAL					
FINAL APPROVAL		DATE	THE TECHNICAL MATERIEL CORP. MAMARONECK, NEW YORK		
MECH. DES.		DATE			
ELECT. DES.		DATE			
CHECKED		DATE	PANEL, FRONT CIRCUIT BREAKER		
DRAWN		DATE			
SIZE		CODE	IDENT NO.	DWG NO.	ISSUE
D		82679		M56632	Ø
SCALE		SHEET			OF