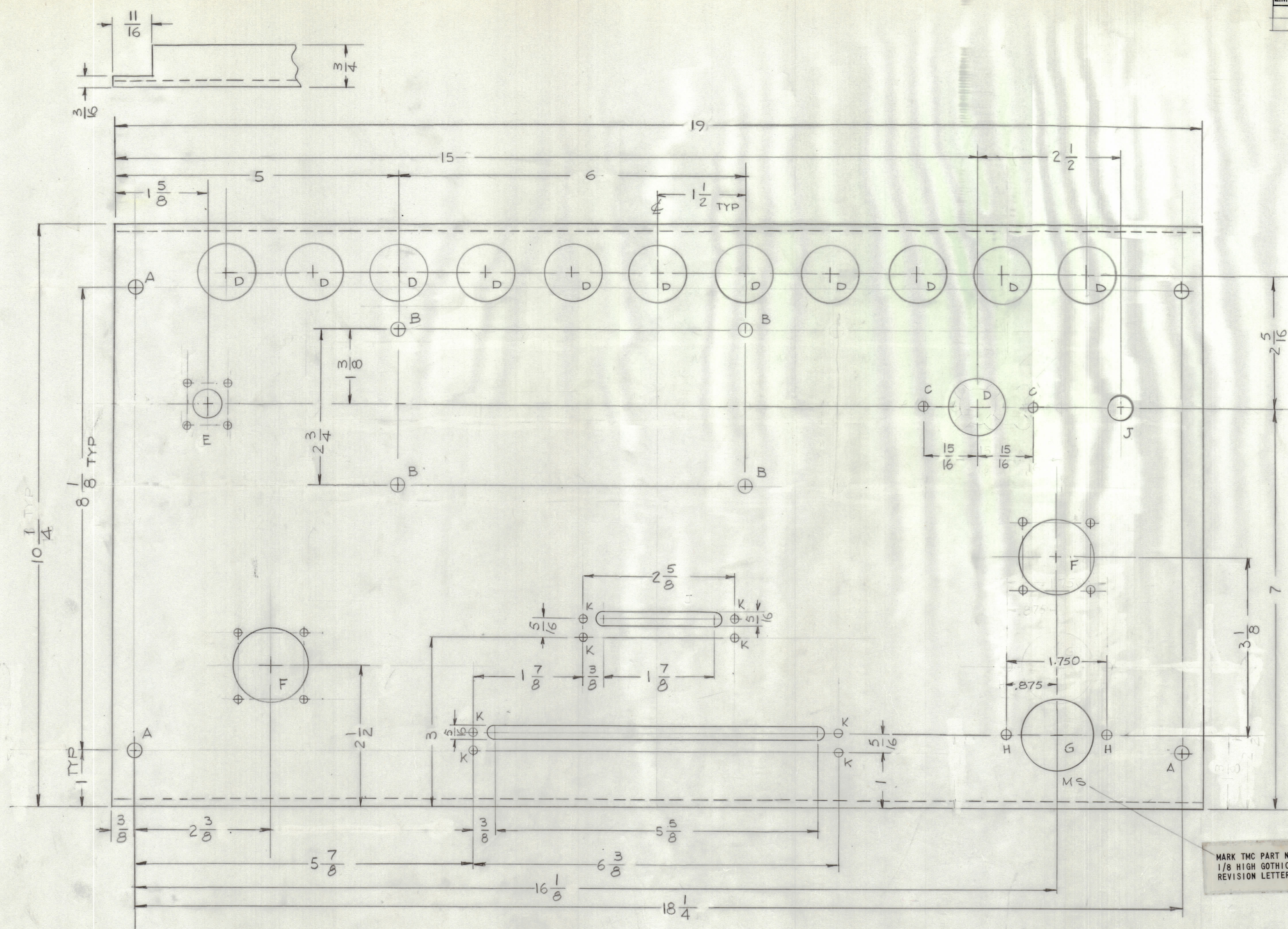


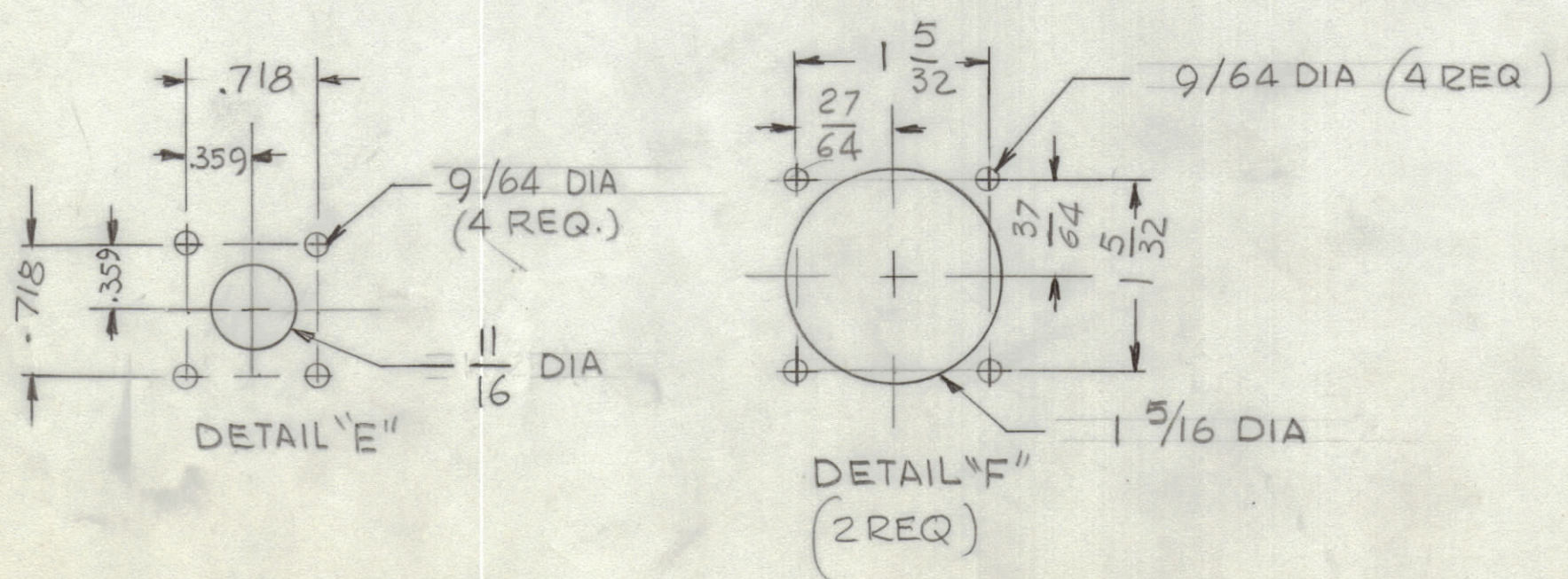
REVISIONS							
E.M.N.NO	DRAFT	CHKD	ZONE	LTR	DESCRIPTION	DATE	APPROVED
5DL				X	DIA J HOLE WAS .434-.402 DIA - ON DETAIL 'E'	6-18-75	
	G				ORIGINAL RELEASE FOR PRODUCTION	9/16/75	



- HOLES:
- A - 1/4 DIA 2 REQ
 - B - 15/64 DIA 4 REQ
 - C - 11/64 DIA 2 REQ
 - D - 1" DIA 12 REQ
 - E - SEE DETAIL 1 REQ
 - F - SEE DETAIL 2 REQ
 - G - 1/4 DIA 1 REQ
 - J - 1/2 DIA 1 REQ
 - K - 9/64 DIA 8 REQ
 - H - .156 DIA 2 REQ

MARK TMC PART NUMBER
1/8 HIGH GOTHIC WITH LATEST
REVISION LETTER

- UNLESS OTHERWISE SPECIFIED:
1. USE MATERIAL THICKNESS FOR MAXIMUM RADIUS ON ALL BENDS.
 2. ALL ANGULAR BENDS 90 DEGREES.
 3. REMOVE ALL BURRS AND SHARP EDGES.



REF: LD3040

QTY / UNIT	MODEL USED ON	ASSY NO.
	AX5202	
APPLICATION		
CODE		

TOLERANCES ON	
DECIMALS	FRACTIONS
.X ± .05	± 1/64
.XX ± .01	ANGLES
.XXX ± .005	± 0° - 30'

QTY. REQ.	ITEM	PART NO.	DESCRIPTION	SYMBOL
LIST OF MATERIAL				
THE TECHNICAL MATERIEL CORP. MAMARONECK, NEW YORK				
REAR PANEL INTERFACE				
MATERIAL .081 THK ALUM 5052 -H32		SIZE CODE IDENT NO. DWG NO.		
FINISH 5404 VEL IRIDITE		D 82679	MS6637	ISSUE
SCALE		SHEET OF		

NOTICE TO PERSONS RECEIVING THIS DRAWING
THE TECHNICAL MATERIEL CORPORATION claims proprietary right in the material disclosed hereon.
This drawing is issued in confidence for engineering information only and may not be reproduced or used
to manufacture anything shown hereon without permission from THE TECHNICAL MATERIEL CORPORATION
to the user. This drawing is loaned for mutual assistance and is subject to recall at any time.