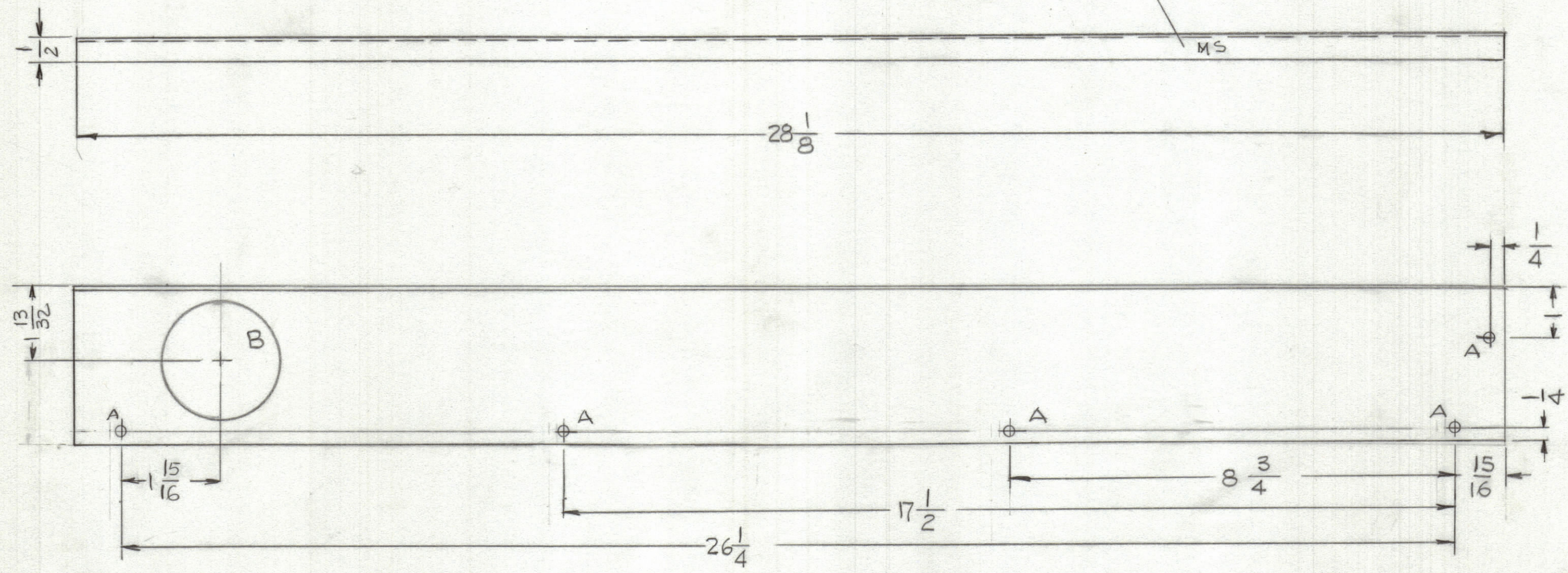


REVISIONS							
ZONE	LTR	DESCRIPTION	DATE	E.M.N.NO	DRAFT	CHKD	APPD

X
φ EXP. RELEASE

9-76

MARK TMC PART NUMBER
1/8 HIGH GOTHIC WITH LATEST
REVISION LETTER



HOLES
A - 3/16 DIA 5REQ
B - 2 1/8 DIA 1REQ

UNLESS OTHERWISE SPECIFIED:
1. USE MATERIAL THICKNESS FOR MAXIMUM RADIUS ON ALL BENDS.
2. ALL ANGULAR BENDS 90 DEGREES.
3. REMOVE ALL BURRS AND SHARP EDGES.

HFLM - 10 K/1		
QTY / UNIT	MODEL USED ON	ASS'Y NO.
APPLICATION		
CODE		

NOTICE TO PERSONS RECEIVING THIS DRAWING
THE TECHNICAL MATERIEL CORPORATION claims proprietary right in the material disclosed hereon. This drawing is issued in confidence for engineering information only and may not be reproduced or used to manufacture anything shown hereon without permission from THE TECHNICAL MATERIEL CORPORATION to the user. This drawing is loaned for mutual assistance and is subject to recall at any time.

UNLESS OTHERWISE SPECIFIED DIMENSIONS ARE IN INCHES AND INCLUDE CHEMICALLY APPLIED OR PLATED FINISHES

TOLERANCES ON
DECIMALS .X ± .05
.XX ± .01
.XXX ± .005
FRACTIONS ± 1/64
ANGLES ± 0° - 30'

MATERIAL .064 ALUM 5052 - H32
FINISH 3A04 YEL IRIDITE

QTY. REQ.	ITEM	PART NO.	DESCRIPTION	SYMBOL
LIST OF MATERIAL				
THE TECHNICAL MATERIEL CORP. MAMARONECK, NEW YORK				
COVER, MAINCONT, SHIELD				
FINAL APPROVAL <i>[Signature]</i>		DATE 8-12-76		SIZE C
MECH. DES.		DATE		
ELECT. DES.		DATE		
CHECKED		DATE		
DRAWN G.D.L.		DATE		CODE IDENT.NO. 82679
MATERIAL		DWG NO. MS 6681		ISSUE φ
FINISH		SCALE 1/2		SHEET OF