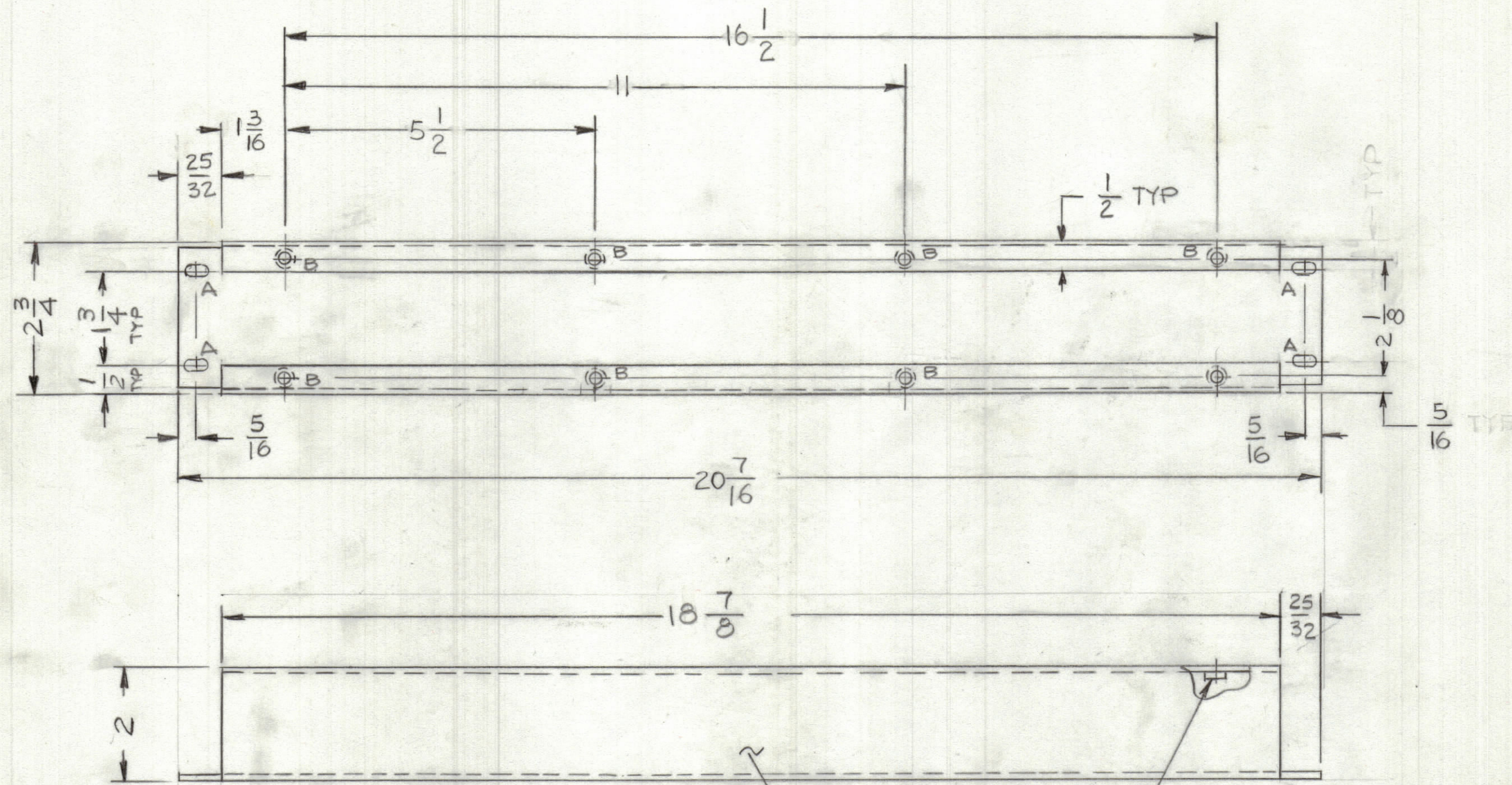


REVISIONS							
ZONE	LTR	DESCRIPTION	DATE	E.M.N.NO	DRAFT	CHKD	APPD

X		EXP. RELEASE	9-76				
---	--	--------------	------	--	--	--	--



HOLES
 A - 11/64 X 11/32 SLOT 4 REQ
 B - .191 - .194 DIA 8 REQ

① MOUNT IN ALL 'B' HOLES

MARK TMC PART NUMBER
 1/8 HIGH GOTHIC WITH LATEST
 REVISION LETTER

- UNLESS OTHERWISE SPECIFIED:
1. USE MATERIAL THICKNESS FOR MAXIMUM RADIUS ON ALL BENDS.
 2. ALL ANGULAR BENDS 90 DEGREES.
 3. REMOVE ALL BURRS AND SHARP EDGES.
 4. MOUNT INSERTS AFTER FINISHING.

1	HFLM-10K/1	
QTY / UNIT	MODEL USED ON	ASS'Y NO.
APPLICATION		
CODE		

NOTICE TO PERSONS RECEIVING THIS DRAWING
 THE TECHNICAL MATERIEL CORPORATION claims proprietary right in the material disclosed hereon. This drawing is issued in confidence for engineering information only and may not be reproduced or used to manufacture anything shown hereon without permission from THE TECHNICAL MATERIEL CORPORATION to the user. This drawing is loaned for mutual assistance and is subject to recall at any time.

UNLESS OTHERWISE SPECIFIED
 DIMENSIONS ARE IN INCHES
 AND INCLUDE CHEMICALLY APPLIED
 OR PLATED FINISHES

TOLERANCES ON

DECIMALS	FRACTIONS
.X ± .05	± 1/64
.XX ± .01	ANGLES
.XXX ± .005	± 0° - 30'

MATERIAL .064 THK
 ALUM. 5052-H32

FINISH 3404
 YEL IRIDITE

8	1	NT1290632-4	NUT, ROUND, SPLINE TYPE	B
QTY. REQ.	ITEM	PART NO.	DESCRIPTION	SYMBOL

FINAL APPROVAL		DATE	LIST OF MATERIAL	
MECH. DES.		DATE	THE TECHNICAL MATERIEL CORP.	
ELECT. DES.		DATE	MAMARONECK, NEW YORK	
CHECKED		DATE	CABLE, DUCT	
DRAWN		DATE		

MATERIAL	SIZE	CODE IDENT.NO.	DWG NO.	ISSUE
FINISH	C	82679	MS6682	φ
SCALE	1/2		SHEET	OF

MS6682 X B