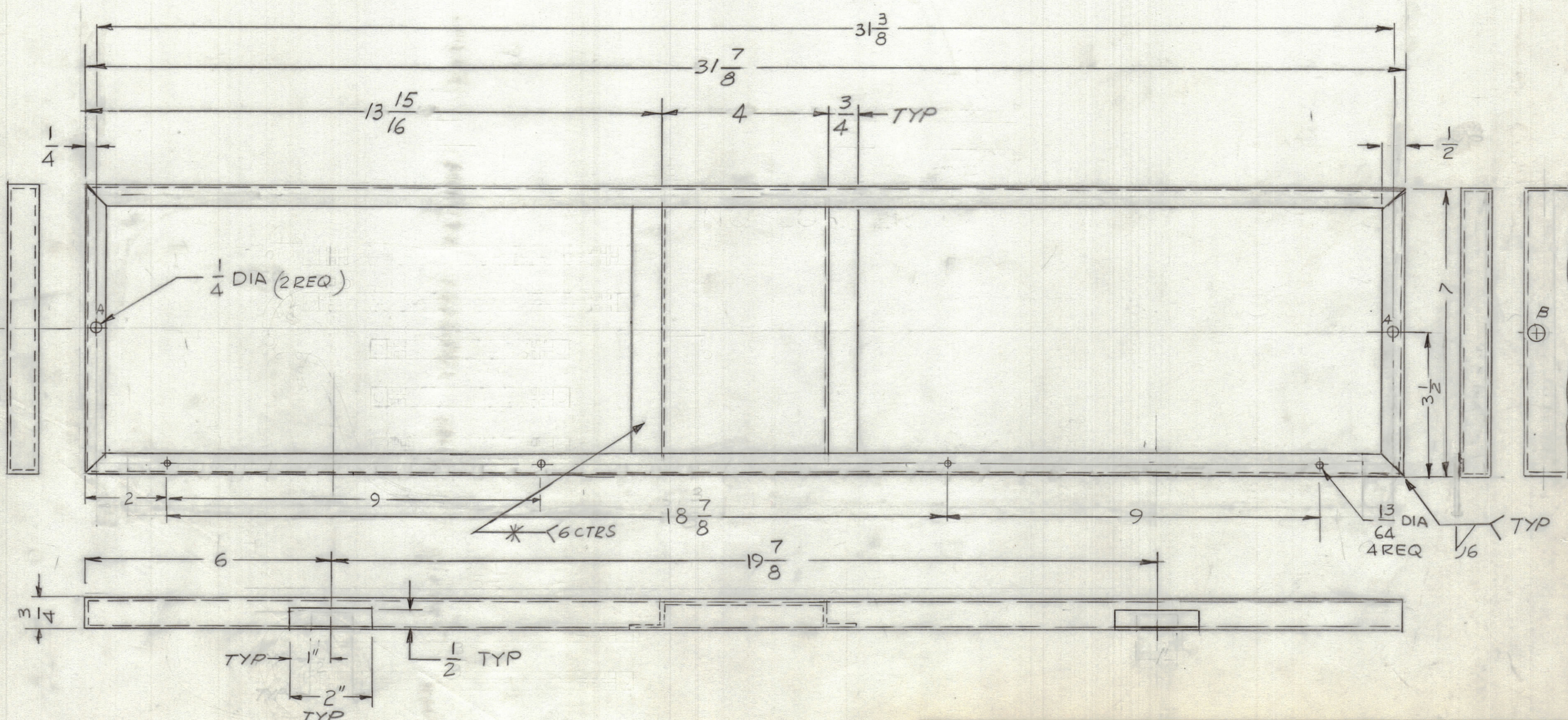


REVISIONS						
ZONE	LTR	DESCRIPTION	DATE	E.M.N.NO	DRAFT	CHKD APPD
	X	EXP RELEASE				
	X1	4HOLES 13/64 DIA ADD	5-26-76		GDL	



**FINISH NOTES**  
 S-371 DEGREASING FOR STEEL  
 S-114 ZINC CHROMATE PRIMER  
 S-520 BLUE GREY TEXTURED  
 AS FOR CUSTOMER SPECIFICATIONS

1	HFLM-10K/11	
QTY / UNIT	MODEL USED ON	ASS'Y NO.
APPLICATION		
CODE		

**NOTICE TO PERSONS RECEIVING THIS DRAWING**  
 THE TECHNICAL MATERIEL CORPORATION claims proprietary right in the material disclosed hereon. This drawing is issued in confidence for engineering information only and may not be reproduced or used to manufacture anything shown hereon without permission from THE TECHNICAL MATERIEL CORPORATION to the user. This drawing is loaned for mutual assistance and is subject to recall at any time.

UNLESS OTHERWISE SPECIFIED DIMENSIONS ARE IN INCHES AND INCLUDE CHEMICALLY APPLIED OR PLATED FINISHES

TOLERANCES ON  
 DECIMALS .X ± .05  
 .XX ± .01  
 .XXX ± .005  
 FRACTIONS ± 1/64  
 ANGLES ± 0° -30'

MATERIAL COLD ROLLED # 18 GA STEEL  
 FINISH AS NOTED

QTY. REQ.	ITEM	PART NO.	DESCRIPTION	SYMBOL
LIST OF MATERIAL				
THE TECHNICAL MATERIEL CORP. MAMARONECK, NEW YORK				
TOP REAR PANEL				
SIZE	CODE IDENT.NO.	DWG NO.	ISSUE	
C	82679	MS 6691	φ	
SCALE	1/2	SHEET	OF	