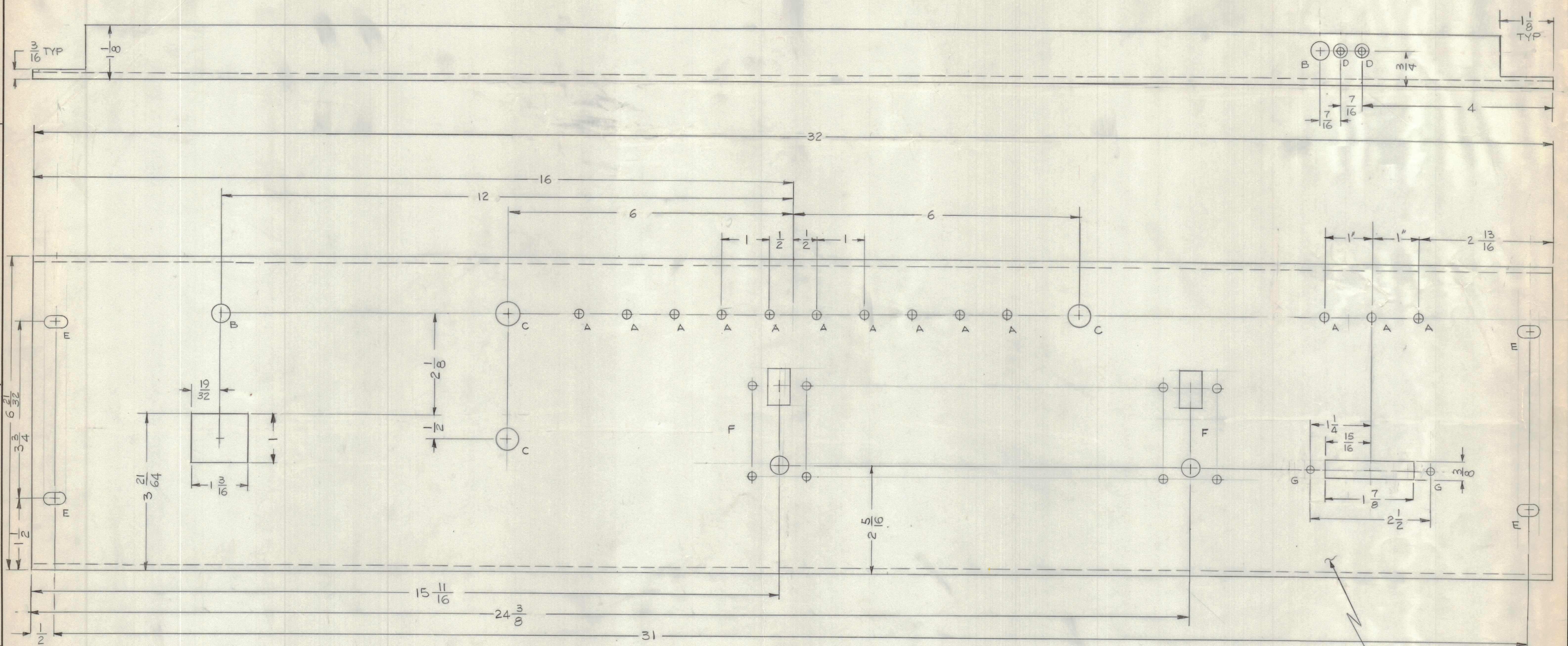


REVISIONS					
E.M.N.O.	DRAFT	CHKD	ZONE	LTR	
DESCRIPTION				DATE	APPROVED
Ø ORIGINAL Release				1-10-77	*

MACHINING 4 CORNERS
BEND PANEL BEFORE
MACHINING.



- HOLES -
- A - 3/16 DIA 13 REQ
 - B - 3/8 DIA 2 REQ
 - C - 15/32 DIA 3 REQ
 - D - .144 DIA C'SHK 82° TO .204 DIA 2 REQ
 - E - 1/4 X 29/64 DIA 4 REQ
 - G - 9/64 DIA 2 REQ

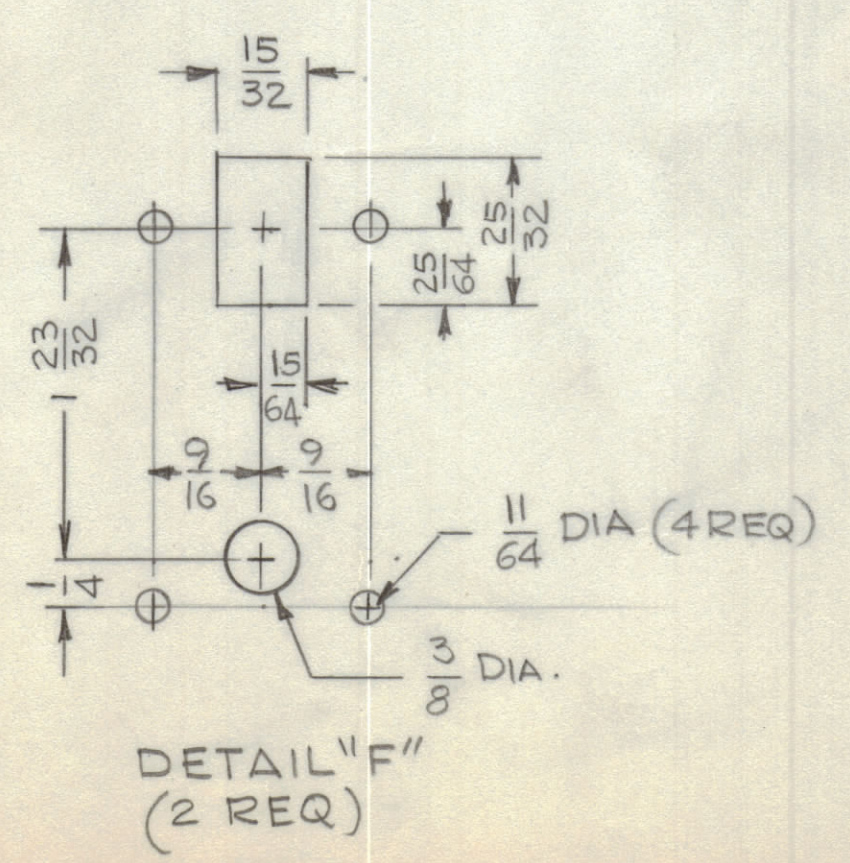
UNLESS OTHERWISE SPECIFIED:

1. USE MATERIAL THICKNESS FOR MAXIMUM RADIUS ON ALL BENDS.
2. ALL ANGULAR BENDS 90 DEGREES.
3. REMOVE ALL BURRS AND SHARP EDGES.

FINISH NOTES:

1. S404 - IRIDITE 14-2 AL-COAT.
2. S114 - ZINC CHROMATE PRIMER } FRONT AND EDGES ONLY
3. S115 - SMOOTH GRAY ENAMEL } EDGES ONLY

PRIME AND PAINT PER CUSTOMER'S SPECIFICATIONS



MARK TMC PART NUMBER
1/8 HIGH GOTHIC WITH LATEST
REVISION LETTER ON REAR OF PANEL

1	HFLM-10K/1	
QTY / UNIT	MODEL USED ON	ASS'Y NO.
APPLICATION		
CODE		
NOTICE TO PERSONS RECEIVING THIS DRAWING		
THE TECHNICAL MATERIEL CORPORATION claims proprietary right in the material disclosed hereon. This drawing is issued in confidence for engineering information only and may not be reproduced or used to manufacture anything shown hereon without permission from THE TECHNICAL MATERIEL CORPORATION to the user. This drawing is loaned for mutual assistance and is subject to recall at any time.		

REF: LD

UNLESS OTHERWISE SPECIFIED DIMENSIONS ARE IN INCHES AND INCLUDE CHEMICALLY APPLIED OR PLATED FINISHES	
TOLERANCES ON DECIMALS	FRACTIONS
.X ± .05	± 1/64
.XX ± .01	ANGLES ± 0° - 30'
.XXX ± .005	
MATERIAL	1/8 THK ALUM 5052-H32
FINISH	SEE NOTES

QTY. REQ.	ITEM	PART NO.	DESCRIPTION	SYMBOL
LIST OF MATERIAL				
THE TECHNICAL MATERIEL CORP. MAMARONECK, NEW YORK				
PANEL, FRONT, CONTROL				
SIZE		CODE	IDENT NO.	DWG NO.
D		82679	MS6703	ISSUE
SCALE 1:1		SHEET OF		