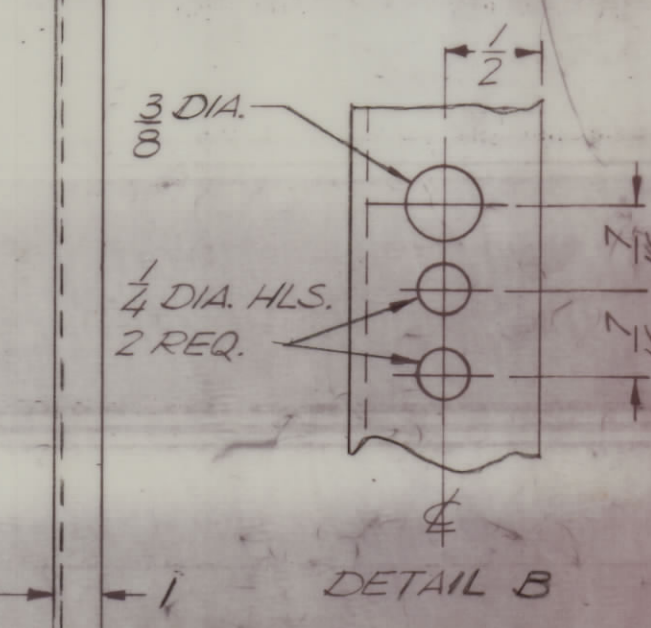
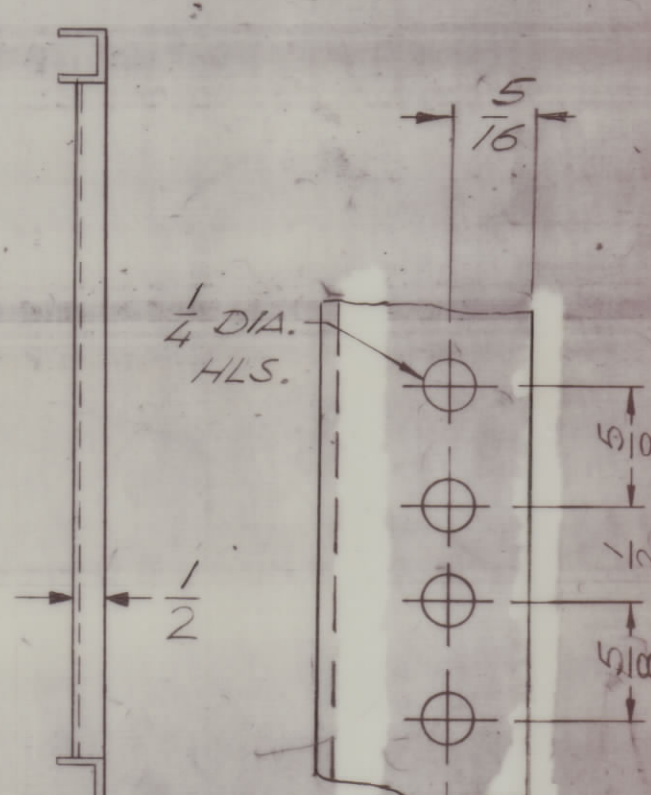
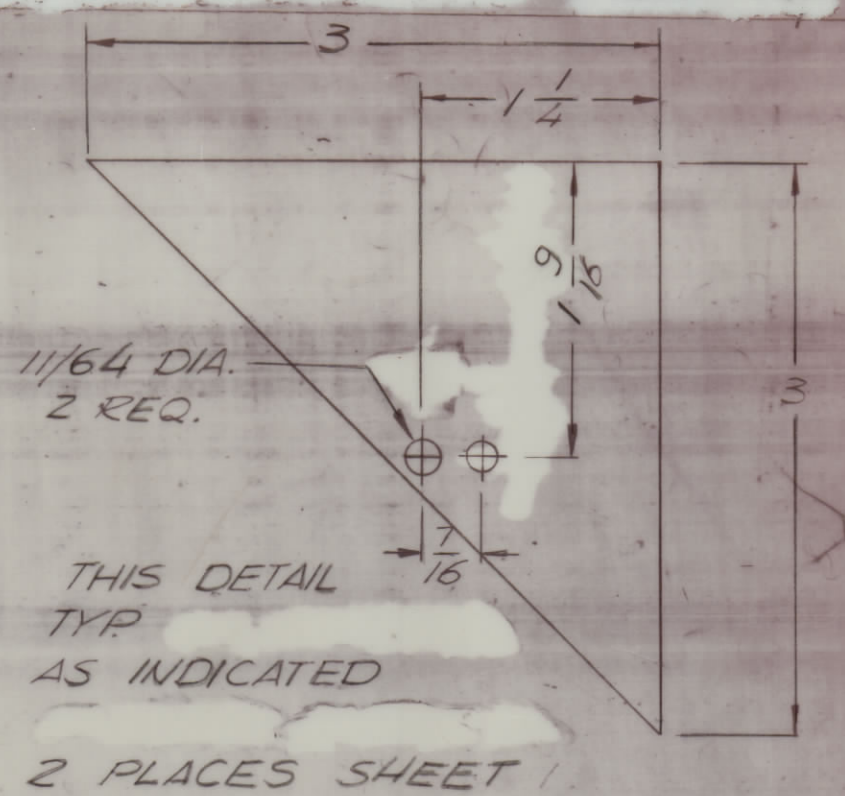
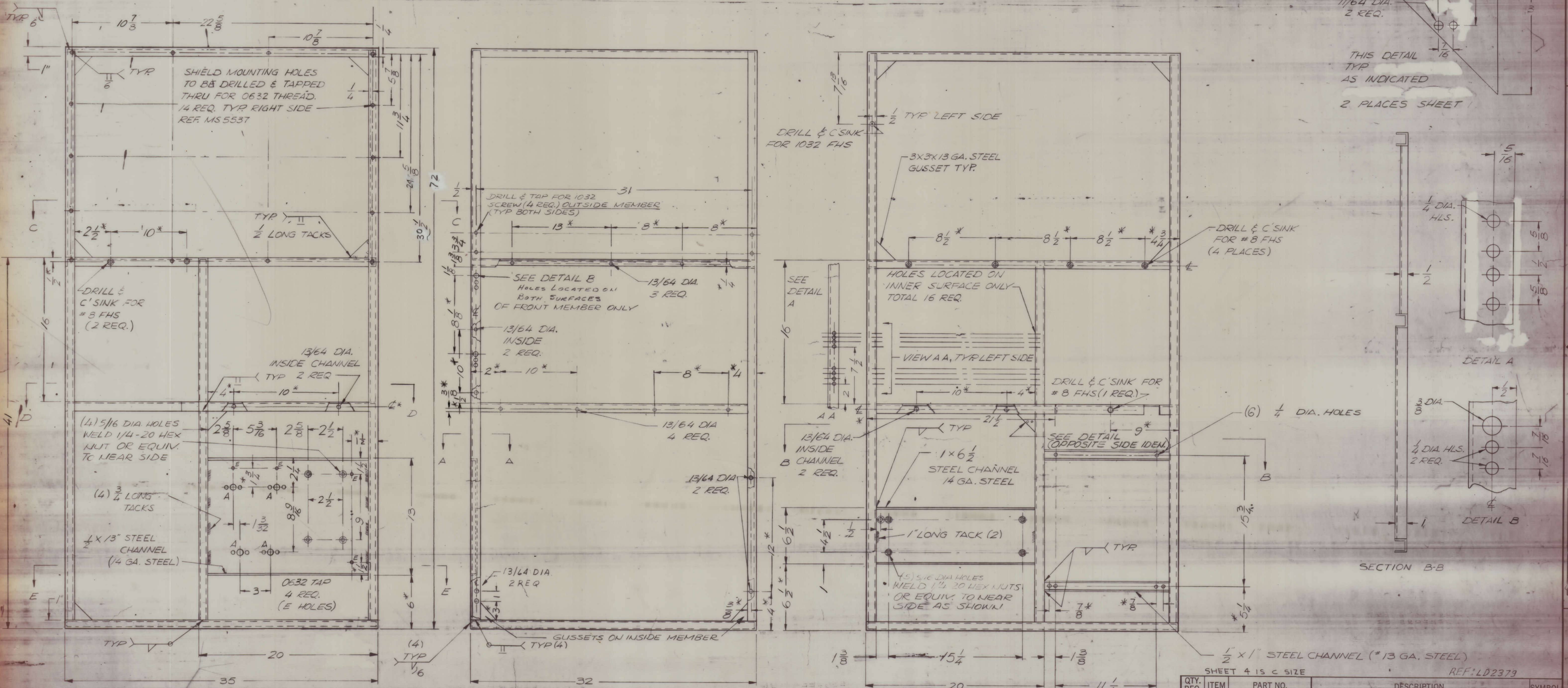


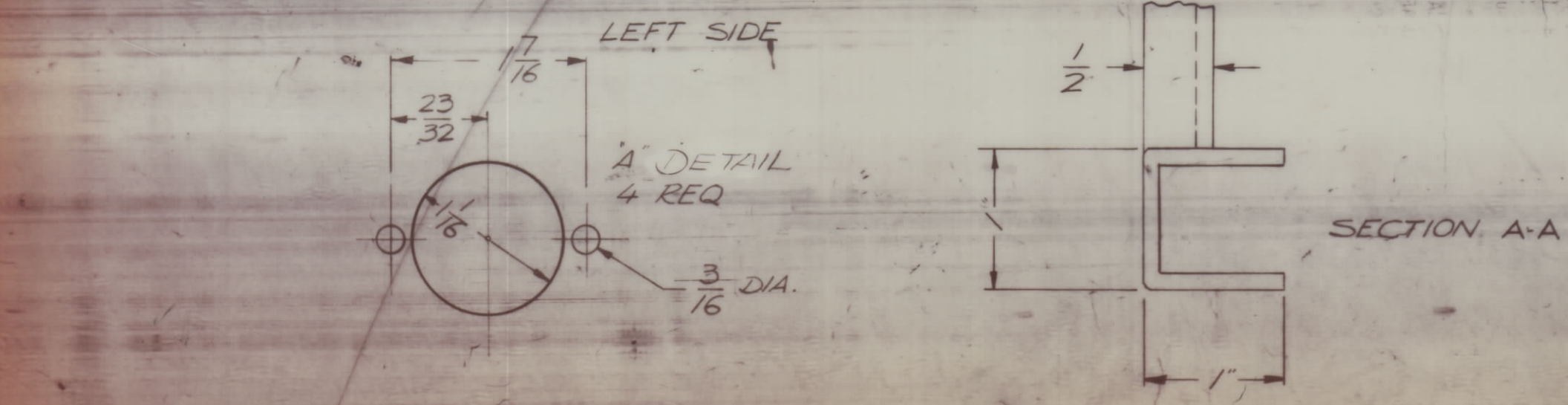
| REVISIONS |     |             |      |          |       |      |       |          |       | REVISIONS |      |     |             |      |          |
|-----------|-----|-------------|------|----------|-------|------|-------|----------|-------|-----------|------|-----|-------------|------|----------|
| ZONE      | LTR | DESCRIPTION | DATE | E.M.N.O. | DRAFT | CHKD | APPD. | E.M.N.O. | DRAFT | CHKD      | ZONE | LTR | DESCRIPTION | DATE | APPROVED |
|           |     |             |      |          |       |      |       |          |       |           |      |     |             |      |          |

NOTE: 1. ALL CHANNELS ARE 1 X 13 GA. STEEL UNLESS OTHERWISE NOTED.  
 2. TOP & BOTTOM IS 13 GA. STEEL.  
 3. GRIND ALL EXTERNAL WELDS FLUSH.

NOTE: DIMENSIONS WITH ASTERISKS (\*) ARE NON CRITICAL. TOLERANCE  $\pm 1/16$



SECTION B-B



| QTY. REQ. | ITEM       | PART NO. | DESCRIPTION      | SYMBOL |
|-----------|------------|----------|------------------|--------|
|           | F. BIDETTI |          | LIST OF MATERIAL |        |

|                |      |
|----------------|------|
| FINAL APPROVAL | DATE |
| Mech. DES.     | DATE |
| ELECT. DES.    | DATE |
| CHECKED        | DATE |
| DRAWN          | DATE |

THE TECHNICAL MATERIEL CORP.  
 MAMARONECK, NEW YORK  
 FRAME, 10K TECK

|               |           |
|---------------|-----------|
| HFLM-10K-1    |           |
| PALA-10K      | ASS'Y NO. |
| MODEL USED ON |           |
| APPLICATION   |           |
| CODE          |           |

UNLESS OTHERWISE SPECIFIED DIMENSIONS ARE IN INCHES AND INCLUDE CHEMICALLY APPLIED OR PLATED FINISHES

TOLERANCES ON  
 DECIMALS .X  $\pm$  .05  
 .XX  $\pm$  .01  
 .XXX  $\pm$  .005

FRACTIONS 1/64  
 ANGLES  $\pm$  0° - 30'

MATERIAL 13GA CRS EXCEPT AS NOTED  
 FINISH COPPER FLASH & CLEAR IRIDITE

|       |                |         |       |
|-------|----------------|---------|-------|
| SIZE  | CODE IDENT NO. | DWG NO. | ISSUE |
| D     | 82679          | MS 6704 |       |
| SCALE | SHEET 1 OF 6   |         |       |

NOTICE TO PERSONS RECEIVING THIS DRAWING  
 THE TECHNICAL MATERIEL CORPORATION claims proprietary right in the material disclosed hereon. This drawing is issued in confidence for engineering information only and may not be reproduced or used to manufacture anything shown hereon without permission from THE TECHNICAL MATERIEL CORPORATION to the user. This drawing is loaned for mutual assistance and is subject to recall at any time.