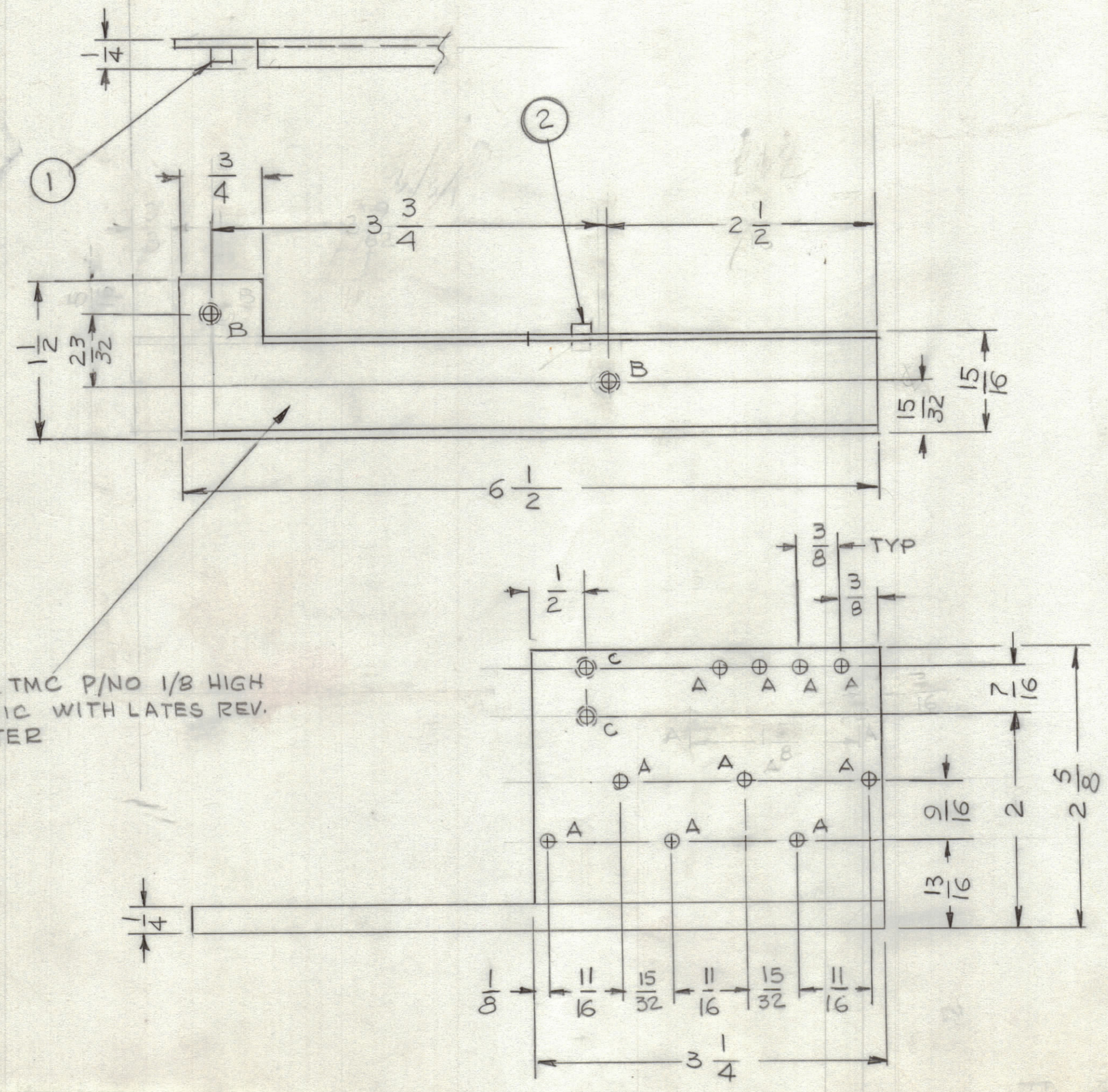


REVISIONS						
ZONE	LTR	DESCRIPTION	DATE	E.M.N.NO	DRAFT	CHKD
	Ø	ORIGINAL RELEASE FOR PRODUCTION	7/1/76		CL	



HOLES :

A - 9/64 DIA 10 REQ

B - .191 - .194 DIA 2 REQ

C - .161 - .164 DIA 2 REQ

MARK TMC P/NO 1/8 HIGH GOTHIC WITH LATES REV. LETTER

- UNLESS OTHERWISE SPECIFIED:
1. USE MATERIAL THICKNESS FOR MAXIMUM RADIUS ON ALL BENDS.
 2. ALL ANGULAR BENDS 90 DEGREES.
 3. REMOVE ALL BURRS AND SHARP EDGES.
 4. MOUNT INSERTS AFTER FINISHING.

1	KIT-417	TR206
1	TLAA-1K	TR206
QTY / UNIT	MODEL USED ON	ASS'Y NO.
APPLICATION		
CODE		

NOTICE TO PERSONS RECEIVING THIS DRAWING

THE TECHNICAL MATERIEL CORPORATION claims proprietary right in the material disclosed hereon. This drawing is issued in confidence for engineering information only and may not be reproduced or used to manufacture anything shown hereon without permission from THE TECHNICAL MATERIEL CORPORATION to the user. This drawing is loaned for mutual assistance and is subject to recall at any time.

REF: LD3049

UNLESS OTHERWISE SPECIFIED DIMENSIONS ARE IN INCHES AND INCLUDE CHEMICALLY APPLIED OR PLATED FINISHES

TOLERANCES ON

DECIMALS	FRACTIONS
.X ± .05	± 1/64
.XX ± .01	ANGLES
.XXX ± .005	± 0° -30'

MATERIAL .064 THK ALY. 5052-H32

FINISH S404 YEL IRIDITE

QTY. REQ.	ITEM	PART NO.	DESCRIPTION	SYMBOL
2	2	NT129-0440-4	NUT, ROUND	C
2	1	NT129-0632-4	NUT, ROUND	B

LIST OF MATERIAL

FINAL APPROVAL: *GDB* DATE: 5/5/76

MECH. DES. DATE

ELECT. DES. DATE

CHECKED DATE

DRAWN: G.D.L. DATE: 4-2-76

THE TECHNICAL MATERIEL CORP.
MAMARONECK, NEW YORK

BRACKET, MTG XFMR

SIZE	CODE IDENT. NO.	DWG NO.	ISSUE
C	82679	MS 6706	Ø

SCALE 1:1 SHEET OF