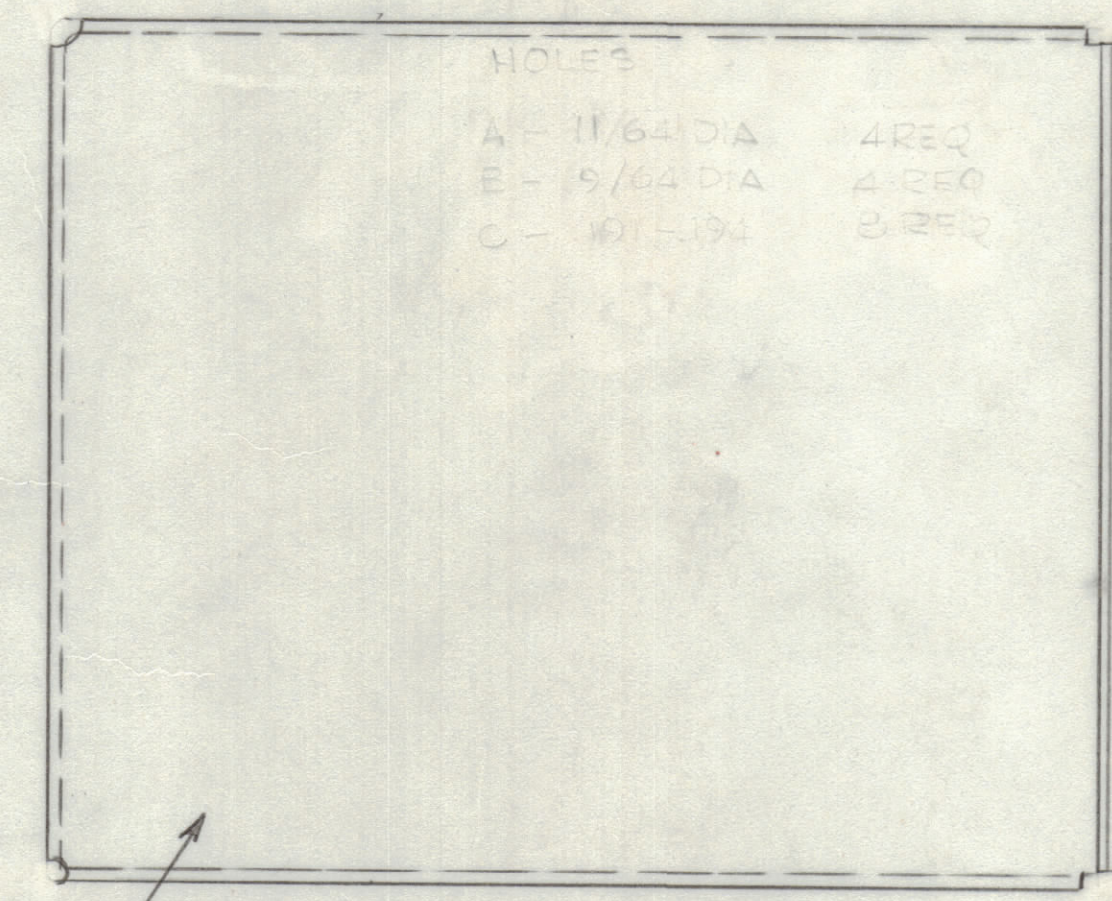
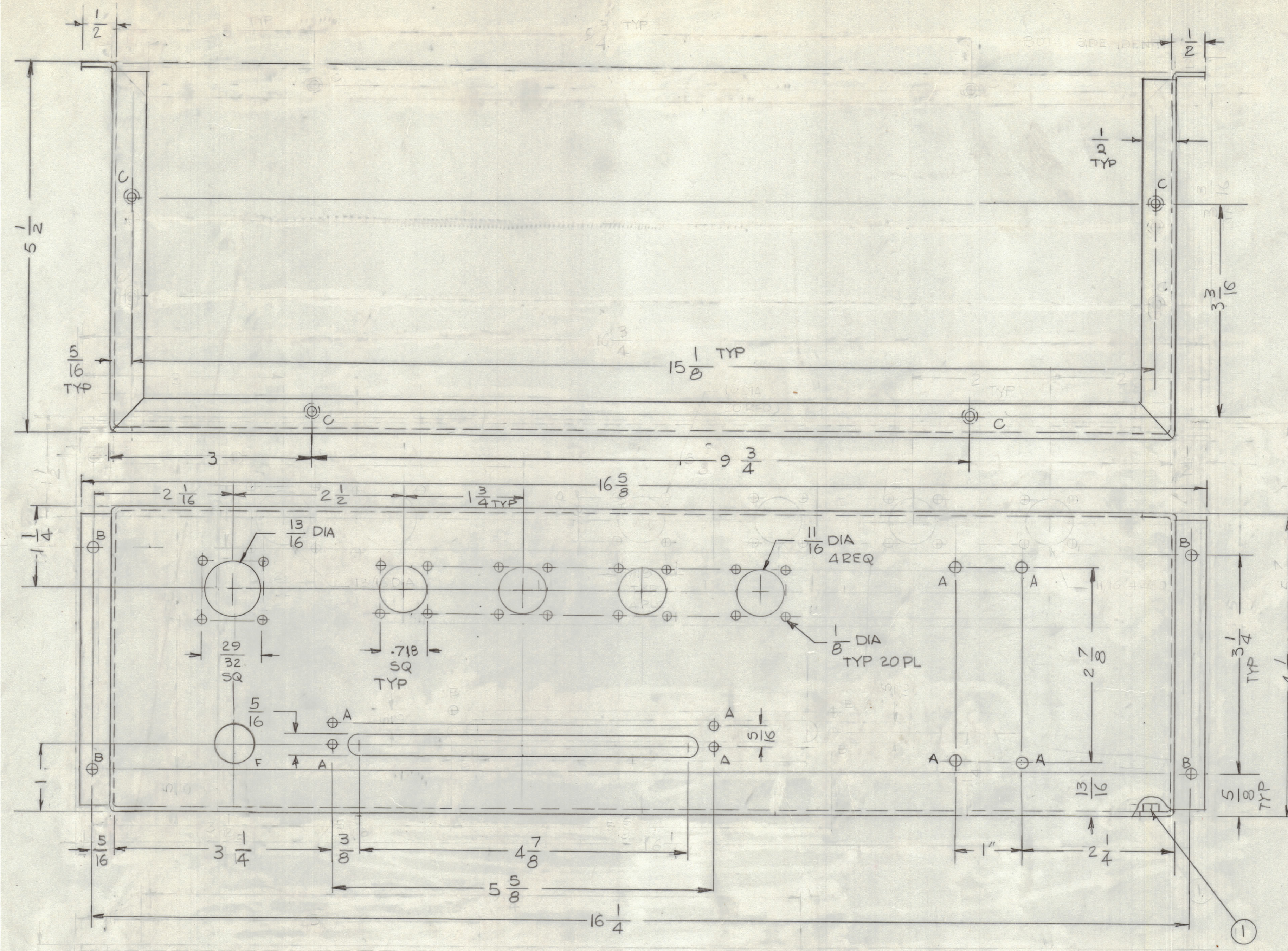


| REVISIONS |        |      |      |     |                                 |         |
|-----------|--------|------|------|-----|---------------------------------|---------|
| E.M.N.O.  | DRAFT  | CHKD | ZONE | LTR | DESCRIPTION                     | DATE    |
|           | G.D.L. |      |      |     | ORIGINAL RELEASE FOR PRODUCTION | 1-26-77 |



MARK TMC P/NO 1/8 HIGH GOTHIC W/LATEST REV. LETTER

- HOLES
- A - 5/32 DIA 8 REQ
  - B - 13/64 DIA 4 REQ
  - C - .191-.194 DIA 4 REQ
  - F - 5/8 DIA 1 REQ

- UNLESS OTHERWISE SPECIFIED:
1. USE MATERIAL THICKNESS FOR MAXIMUM RADIUS ON ALL BENDS.
  2. ALL ANGULAR BENDS 90 DEGREES.
  3. REMOVE ALL BURRS AND SHARP EDGES.
  4. MOUNT INSERTS AFTER FINISHING.

|             |               |            |
|-------------|---------------|------------|
| 1           | AX5212        | GPT-1KCE40 |
| QTY / UNIT  | MODEL USED ON | ASS'Y NO.  |
| APPLICATION |               |            |
| CODE        |               |            |

NOTICE TO PERSONS RECEIVING THIS DRAWING  
 THE TECHNICAL MATERIEL CORPORATION claims proprietary right in the material disclosed hereon. This drawing is issued in confidence for engineering information only and may not be reproduced or used to manufacture anything shown hereon without permission from THE TECHNICAL MATERIEL CORPORATION to the user. This drawing is loaned for mutual assistance and is subject to recall at any time.

REF: LD 3059

|   |            |                |      |
|---|------------|----------------|------|
| UNLESS OTHERWISE SPECIFIED DIMENSIONS ARE IN INCHES AND INCLUDE CHEMICALLY APPLIED OR PLATED FINISHES |            | FINAL APPROVAL | DATE |
| TOLERANCES ON   |            | MECH. DES.     | DATE |
| DECIMALS  | FRACTIONS  | ELECT. DES.    | DATE |
| .X ± .05  | ± 1/64     | CHECKED        | DATE |
| .XX ± .01   | ANGLES     | DRAWN          | DATE |
| .XXX ± .005   | ± 0° - 30' | G.D.L.         |      |

MATERIAL .064 THK  
 ALUM 5052-H32  
 FINISH 5404  
 YEL IRIDITE

|  |                |              |             |        |
|--|----------------|--------------|-------------|--------|
| 4  | 1              | NT 129-632-4 | NUT, ROUND  | C      |
| QTY. REQ.  | ITEM           | PART NO.     | DESCRIPTION | SYMBOL |
| LIST OF MATERIAL                                     |                |              |             |        |
| THE TECHNICAL MATERIEL CORP.<br>MAMARONECK, NEW YORK |                |              |             |        |
| CHASSIS, ANT SWITCHING                               |                |              |             |        |
| SIZE   | CODE IDENT NO. | DWG NO.      | ISSUE       |        |
| D  | 82679          | MS 6741      | 1           |        |
| SCALE 1:1  |                |              | SHEET OF    |        |