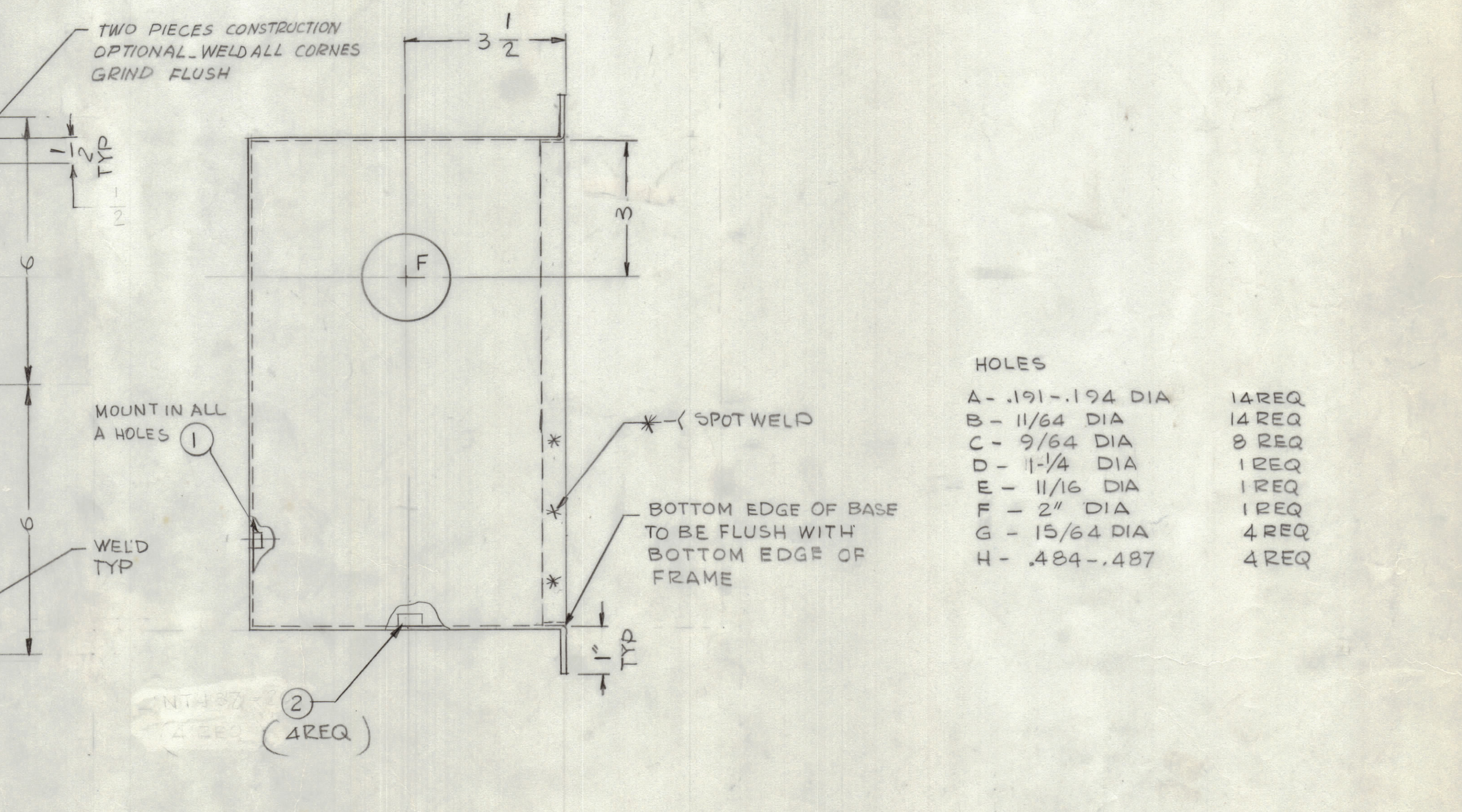
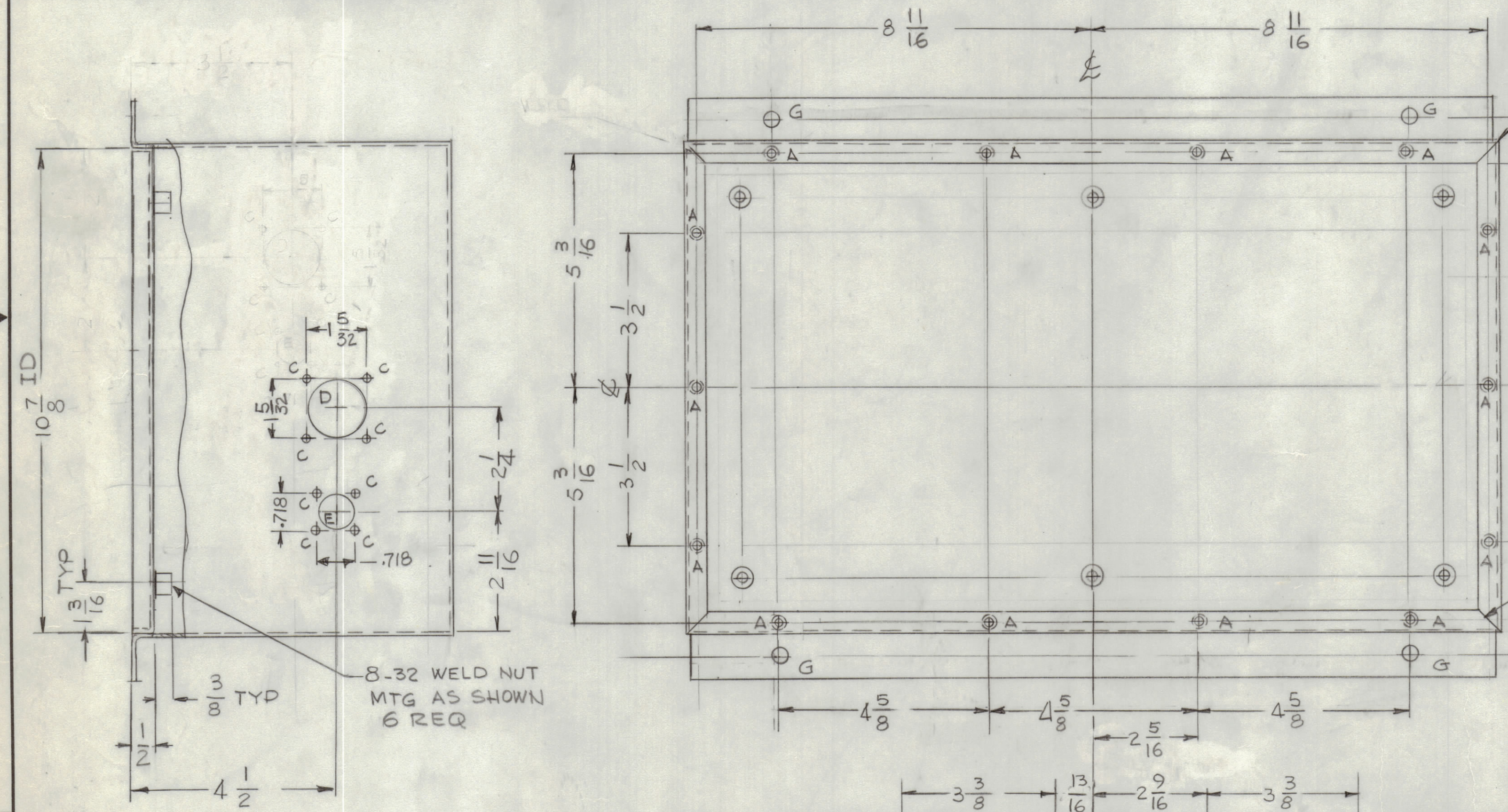
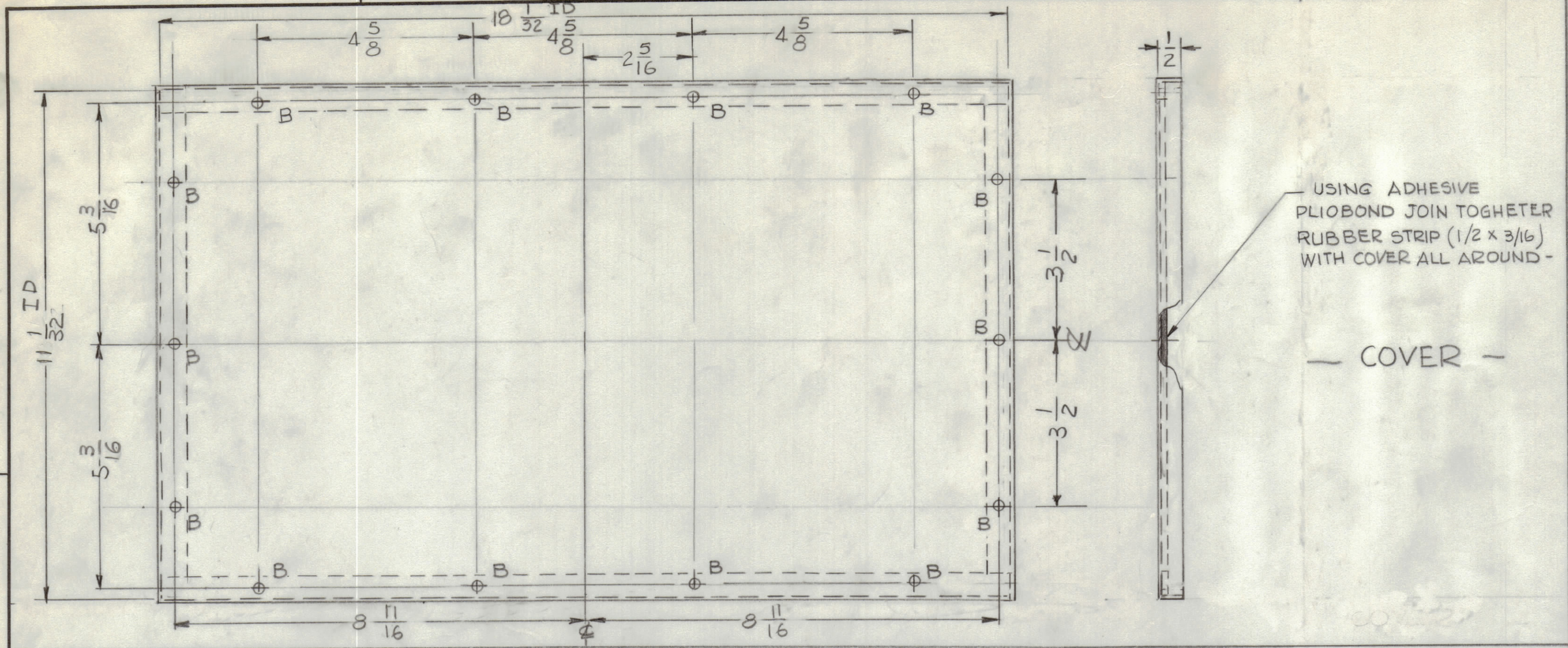


REVISIONS							
E.M.N.NO	DRAFT	CHKD	ZONE	LTR	DESCRIPTION	DATE	APPROVED
CDL			4C	X1	1/2 DIM ADD - SPOTWELD NOTE ADD.		
CDL				X2	ITEM 2 & DIA. H HOLE ADD	2-2-77	
GDL				X3	ON COVER DETAIL NOTE FOR RUBBER AND ORIGINAL RELEASE FOR PRODUCTION	2-17-77	
PH				Ø		1-17-78	



HOLES

A - .191-.194 DIA	14REQ
B - 11/64 DIA	14REQ
C - 9/64 DIA	8REQ
D - 1/4 DIA	1REQ
E - 11/16 DIA	1REQ
F - 2" DIA	1REQ
G - 15/64 DIA	4REQ
H - .484-.487	4REQ

SPOTWELD TOP WITH BASE ALL AROUND AND-FILL INSIDE ALL AROUND WITH SOLDER

QTY / UNIT	MODEL USED ON	ASS'Y NO.
APPLICATION		
CODE		

UNLESS OTHERWISE SPECIFIED DIMENSIONS ARE IN INCHES AND INCLUDE CHEMICALLY APPLIED OR PLATED FINISHES

DECIMALS .X ± .05 .XX ± .01 .XXX ± .005	FRACTIONS ± 1/64 ANGLES ± 0°-30'
--	---

MATERIAL #16 GAUGE STEEL

FINISH S520 BLUE GRAY TEXTURED VINYL PAINT

FINAL APPROVAL 0803	DATE 1/7/78
MECH. DES.	DATE
ELECT. DES.	DATE
CHECKED GDL	DATE 1-17-78
DRAWN	DATE 12-13-76

QTY. REQ.	ITEM	PART NO.	DESCRIPTION	SYMBOL
4	2	NT129-616-4	NUT, ROUND SWAGE	H
14	1	NT129-06324	NUT, ROUND SWAGE	A

LIST OF MATERIAL

THE TECHNICAL MATERIEL CORP.
MAMARONECK, NEW YORK

ANTENNA TUNER CASE
ATU-1KC

SIZE	CODE	IDENT NO.	DWG NO.	ISSUE
D	82679	MS6763		Ø

SCALE 1/2 SHEET OF

NOTICE TO PERSONS RECEIVING THIS DRAWING
THE TECHNICAL MATERIEL CORPORATION claims proprietary right in the material disclosed hereon. This drawing is issued in confidence for engineering information only and may not be reproduced or used to manufacture anything shown hereon without permission from THE TECHNICAL MATERIEL CORPORATION to the user. This drawing is loaned for mutual assistance and is subject to recall at any time.