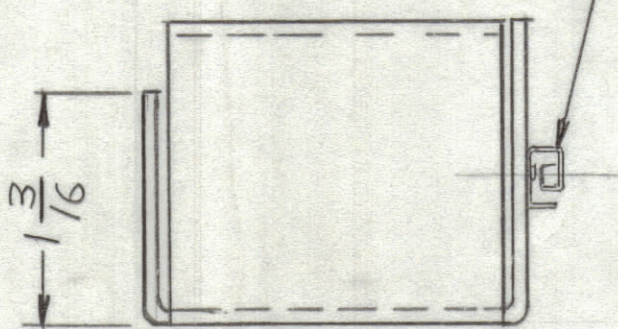
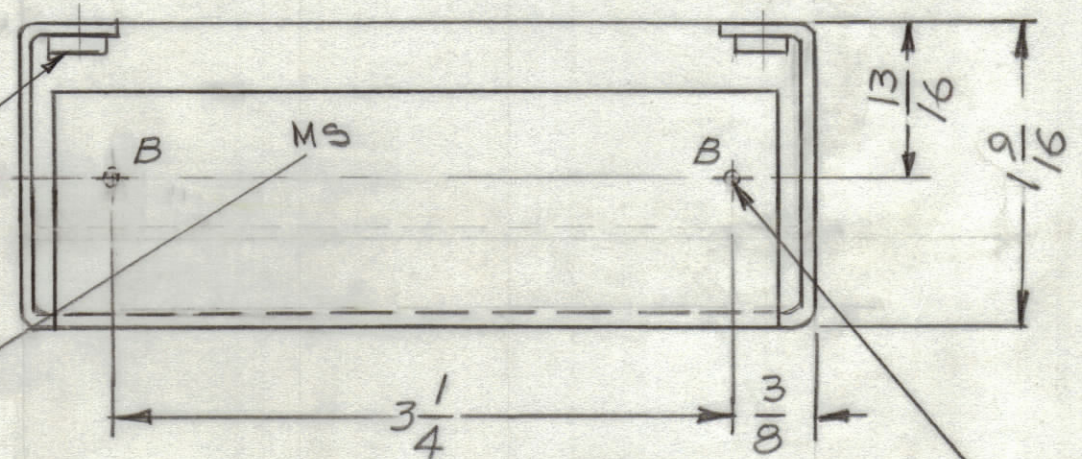
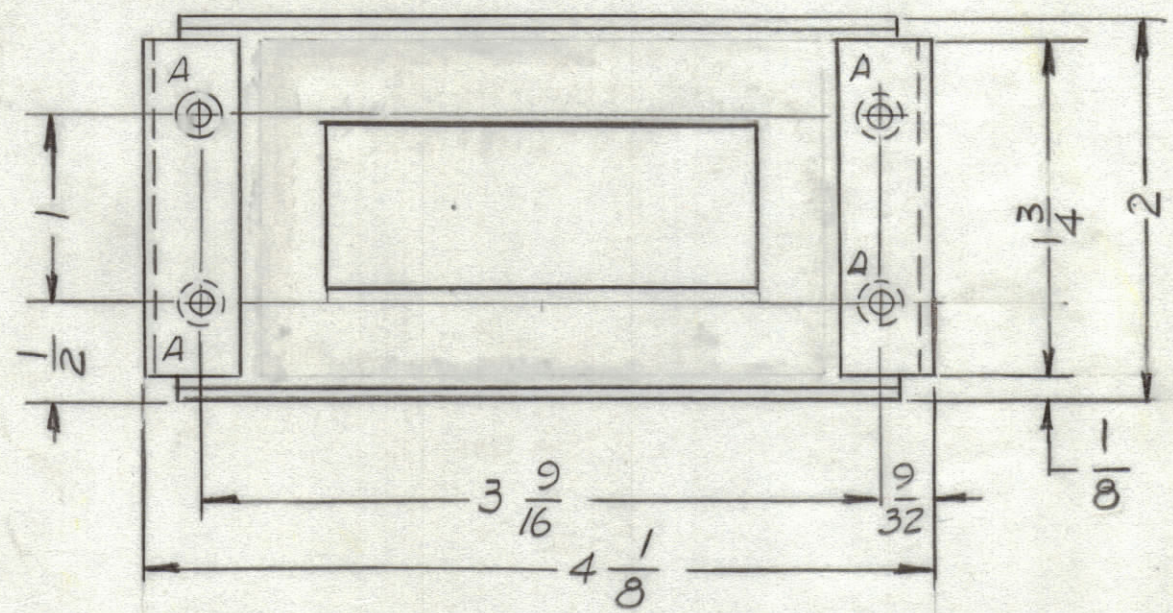


REVISIONS							
ZONE	LTR	DESCRIPTION	DATE	E.M.N.NO	DRAFT	CHKD	APPD



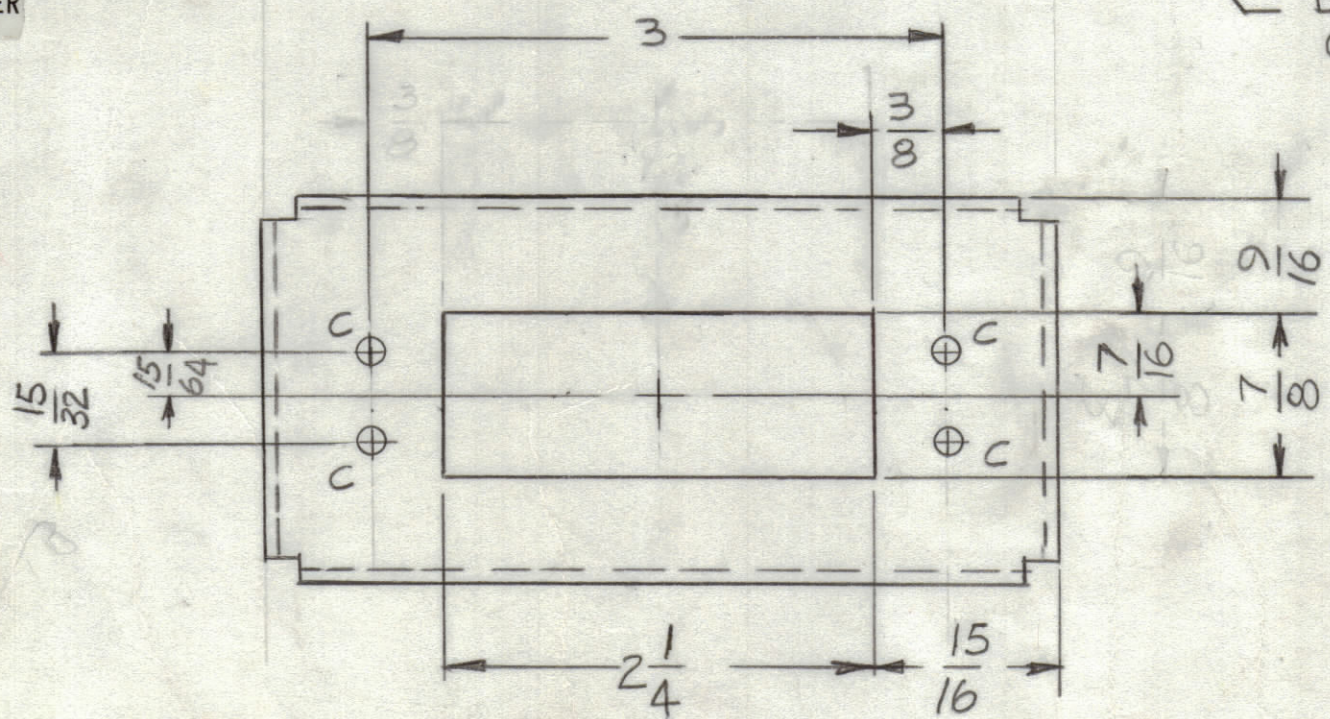
HOLES

A - .191 - .194 DIA	4 REQ'D
B - .067 DIA	2 REQ'D
C - 9/64 DIA	4 REQ'D

MOUNT IN "A" HOLES

MOUNT IN "B" HOLES

MARK TMC PART NUMBER
1/8 HIGH GOTHIC WITH LATE
REVISION LETTER



UNLESS OTHERWISE SPECIFIED:

1. USE MATERIAL THICKNESS FOR MAXIMUM RADIUS ON ALL BENDS.
2. ALL ANGULAR BENDS 90 DEGREES.
3. REMOVE ALL BURRS AND SHARP EDGES.
4. MOUNT INSERTS AFTER FINISHING.

1	MFTR-10KE	
QTY / UNIT	MODEL USED ON	ASS'Y NO.
APPLICATION		
CODE		

NOTICE TO PERSONS RECEIVING THIS DRAWING
THE TECHNICAL MATERIEL CORPORATION claims proprietary right in the material disclosed hereon. This drawing is issued in confidence for engineering information only and may not be reproduced or used to manufacture anything shown hereon without permission from THE TECHNICAL MATERIEL CORPORATION to the user. This drawing is loaned for mutual assistance and is subject to recall at any time.

UNLESS OTHERWISE SPECIFIED
DIMENSIONS ARE IN INCHES
AND INCLUDE CHEMICALLY APPLIED
OR PLATED FINISHES

TOLERANCES ON

DECIMALS	FRACTIONS
.X ± .05	± 1/64
.XX ± .01	ANGLES
.XXX ± .005	± 0° -30'

MATERIAL 031 THK
ALUM. 5052-H32
FINISH
S404 YEL. IRIDITE

QTY. REQ.	ITEM	PART NO.	DESCRIPTION	SYMBOL
2	3	EY100-5	EYELET, MTL	
1	2	CU157-4	RETAINED, PC. BOARD	
4	1	NT129 0632-4	NUT, PLN., SPLINE	

LIST OF MATERIAL

FINAL APPROVAL	DATE
<i>GB</i>	4/20/77
MECH. DES.	DATE
ELECT. DES.	DATE
<i>JL</i>	4-20-77
CHECKED	DATE
DRAWN	DATE
GD.L	4-7-77

THE TECHNICAL MATERIEL CORP.
MAMARONECK, NEW YORK

RECEPTACLE MTG. BRACKET

SIZE	CODE IDENT. NO.	DWG NO.	ISSUE
C	82679	MS6791	X
SCALE	1:1	SHEET	OF