

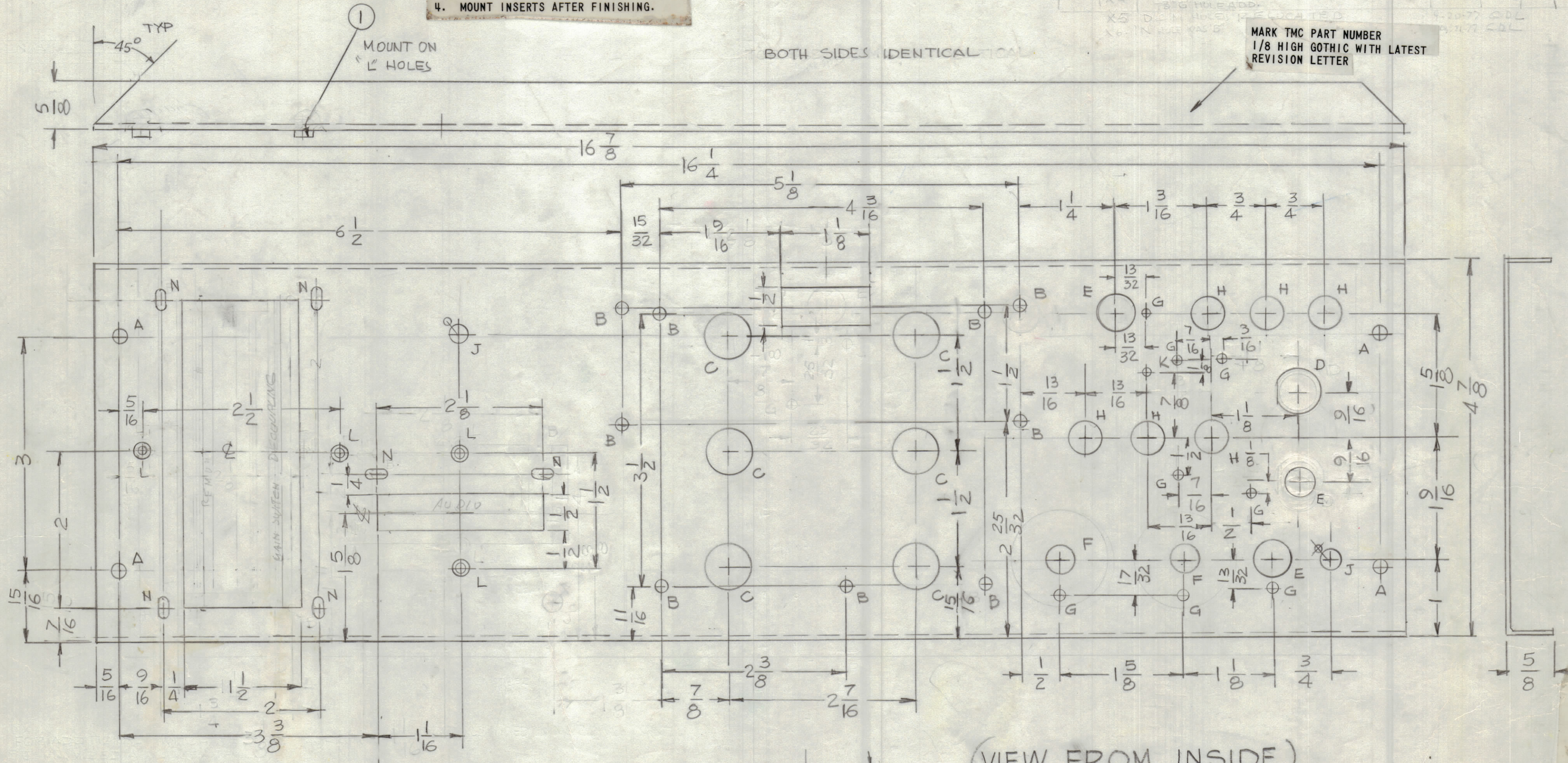
UNLESS OTHERWISE SPECIFIED:

1. USE MATERIAL THICKNESS FOR MAXIMUM RADIUS ON ALL BENDS.
2. ALL ANGULAR BENDS 90 DEGREES.
3. REMOVE ALL BURRS AND SHARP EDGES.
4. MOUNT INSERTS AFTER FINISHING.

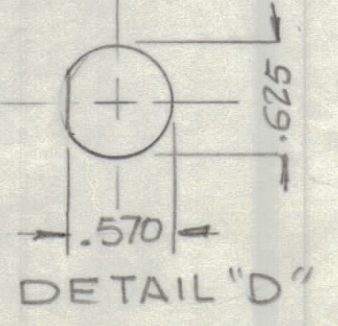
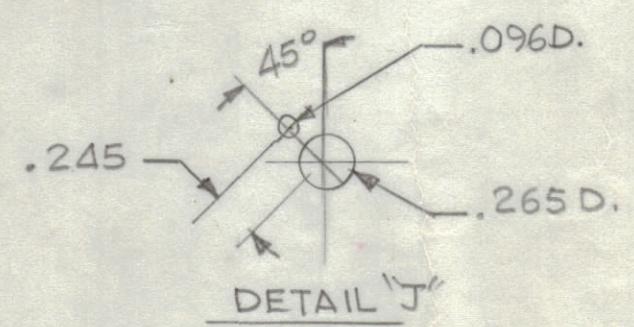
REVISIONS						
ZONE	LTR	DESCRIPTION	DATE	DRAFT	CHK'D	APP'D
	Ø	ORIGINAL RELEASE FOR PRODUCTION	6-6-78	GDL	WJB	*
X3		DATE TIME OF REVISIONS	9-13-77	GDL		
X4		DATE TIME OF REVISIONS	9-17-77	GDL		
X5		DATE TIME OF REVISIONS	9-20-77	GDL		
X6		DATE TIME OF REVISIONS	9-21-77	GDL		

BOTH SIDES IDENTICAL

MARK TMC PART NUMBER
1/8 HIGH GOTHIC WITH LATEST
REVISION LETTER



HOLE	DIA	REQ
A	13/64	4 REQ
B	11/64	10 REQ
C	5/8	6 REQ
D	SEE DETAIL	1 REQ
E	1/2	3 REQ
F	25/64	2 REQ
G	9/64	8 REQ
H	7/16	6 REQ
J	SEE DETAIL	2 REQ
K	.096	1 REQ
L	.191-.194	4 REQ
M	15/32	1 REQ
N	9/64 X 9/32	6 REQ



(VIEW FROM INSIDE)

REF: LD3083

INTERPRET DRAWING PER LISTED DOCUMENTS
DIMENSIONING MIL-STD-8 SURFACE ROUGHNESS MIL-STD-10 ABBREVIATIONS MIL-STD-12 ELECTRONIC SYMBOLS MIL-STD-15 WELDING SYMBOLS JAN-STD-19
MMXR-2
NEXT ASSY USED ON APPLICATION

NOTICE TO PERSONS RECEIVING THIS DRAWING
THE TMC SYSTEMS AND POWER CORPORATION claims proprietary right in the material disclosed herein. This drawing is issued in confidence for engineering information only and may not be reproduced or used to manufacture anything shown herein without permission from THE TMC SYSTEMS AND POWER CORPORATION to the user. This drawing is loaned for mutual assistance and is subject to recall at any time.

TOLERANCES ON	
DECIMALS .X ± .05 .XX ± .01 .XXX ± .005	FRACTIONS ± 1/64 ANGLES ± 0° -30'
MATERIAL .063THK ALUM 5052-H32	FINISH 3404 YEL. IRIDITE

QTY. REQ.	ITEM	PART NO.	DESCRIPTION	SYMBOL
4	1	NT 129-632-4	NUT-ROUND	L
LIST OF MATERIAL				
FINAL APPROVAL * [Signature]		DATE 8/2/78	THE TMC SYSTEMS AND POWER CORPORATION SPRINGFIELD, VIRGINIA	
MECH. DES. [Signature]		DATE 11-29-77	REAR PLATE	
ELECT. DES.		DATE		
CHECKED [Signature]		DATE 11/29/77		
DRAWN G.D.L.		DATE 7-19-77	SCALE 1:1 SHEET OF	
SIZE	CODE IDENT. NO.	DWG NO.	ISSUE	
C	24146	MS 6815	Ø	

MS 6815
Ø
B

A