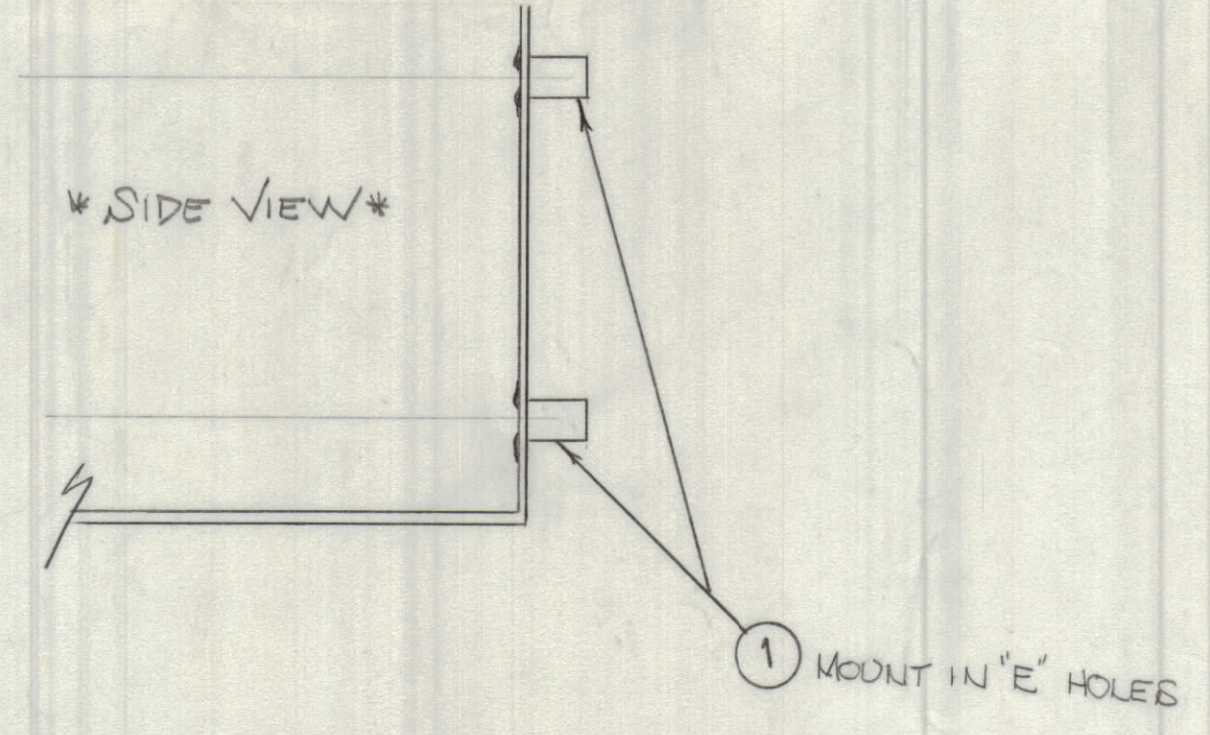
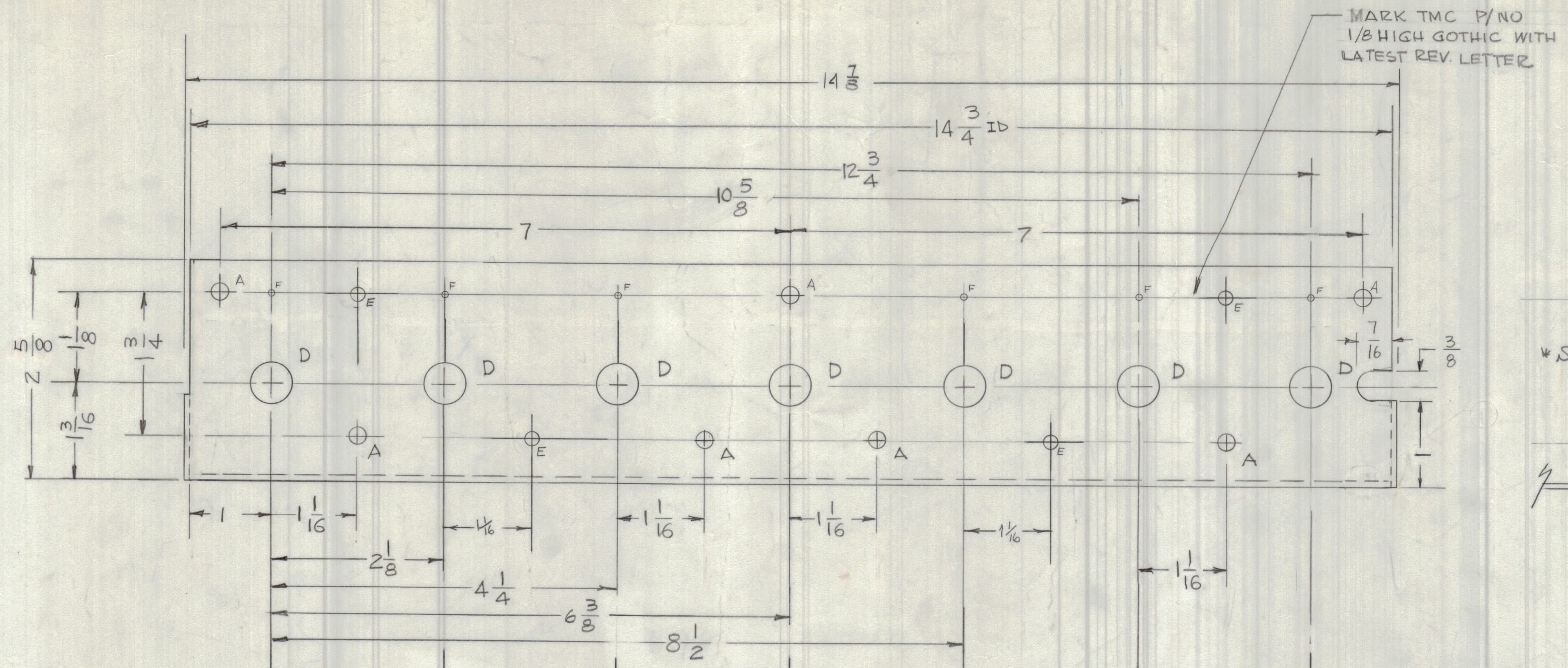
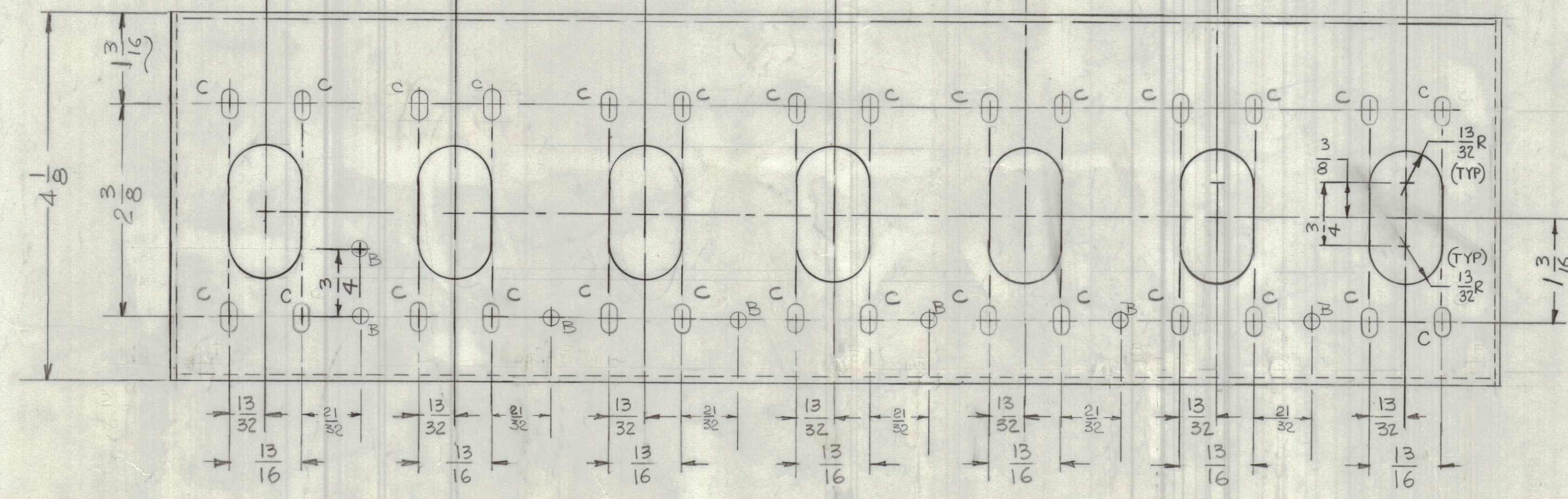
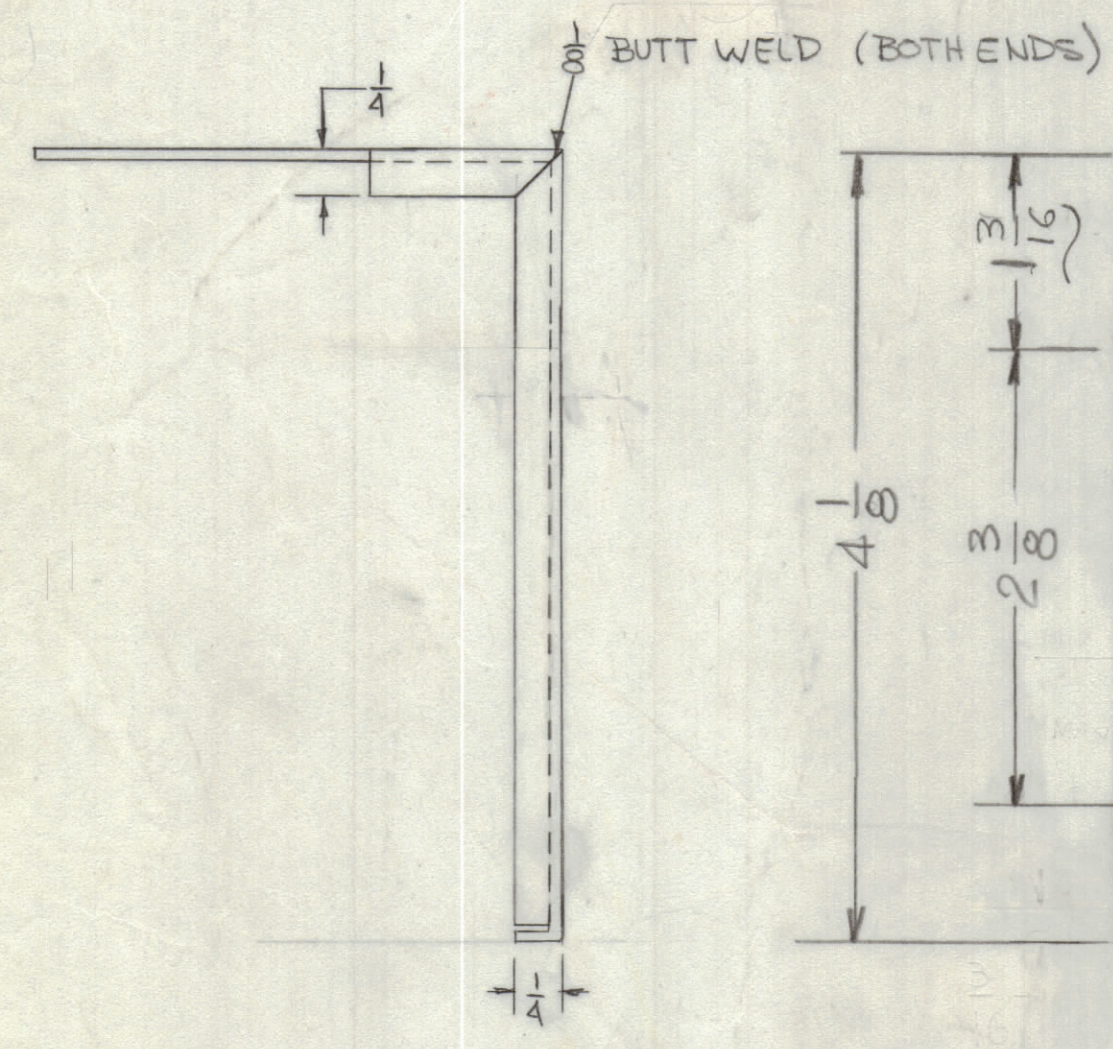


REVISIONS							
E.M.N.NO	DRAFT	CHKD	ZONE	LTR	DESCRIPTION	DATE	APPROVED
EDL				X2	REV. 2 REDRAWN	9-8-77	
PH				X3	ADDED STIFFENING LIPS, WELDED CORNERS AND 'E' HOLES, REMOVED NTS	10-24-77	
PH				X4	RECCATE 2 'C' HOLES	11-19-77	
RS				X5	ADDED 'E' HOLES CHANGED DIA FOR 'D' HOLES ALSO ADDED 'F' HOLES		
ADD				X6	ADDED (7) TYPICAL CLEARANCE SLOTS	6-6-78	
				Ø	ORIGINAL RELEASE FOR PRODUCTION	6-6-78	*



- HOLES
- A - 13/64 7REQ
  - B - 11/64 7REQ
  - C - 3/16 X 3/8 SLOT 2Ø REQ
  - D - 3/4 DIA 7REQ.
  - E - .189 DIA 4REQ
  - F - 1/16 DIA 6REQ



QTY. REQ.	ITEM	PART NO.	DESCRIPTION	SYMBOL
4	1	TE 108-1	STANDOFF	

FINAL APPROVAL		DATE	<b>THE TECHNICAL MATERIEL CORP.</b> MAMARONECK, NEW YORK  <b>BRACKET MTG BD &amp; SW</b>
* GDB		6/2/78	
MECH. DES.		11-29-77	
ELECT. DES.			
CHECKED	GDB	11/29/77	
DRAWN	GDL	9-8-77	

TOLERANCES ON	
DECIMALS	FRACTIONS
.X = .05	± 1/64
.XX = .01	ANGLES
.XXX = .005	± 0° - 30'

QTY / UNIT	MODEL USED ON	ASS'Y NO.
1	MMX(-) - 2B	AX791

CODE	MATERIAL	FINISH
	.064 THK ALUM 5052 - H32	S404 YEL IRIDIOTE

SIZE	CODE IDENT NO.	DWG NO.	ISSUE
D	82679	MS 6819	Ø

SCALE	SHEET	OF
1:1		

NOTICE TO PERSONS RECEIVING THIS DRAWING  
 THE TECHNICAL MATERIEL CORPORATION claims proprietary right in the material disclosed hereon. This drawing is issued in confidence for engineering information only and may not be reproduced or used to manufacture anything shown hereon without permission from THE TECHNICAL MATERIEL CORPORATION to the user. This drawing is loaned for mutual assistance and is subject to recall at any time.