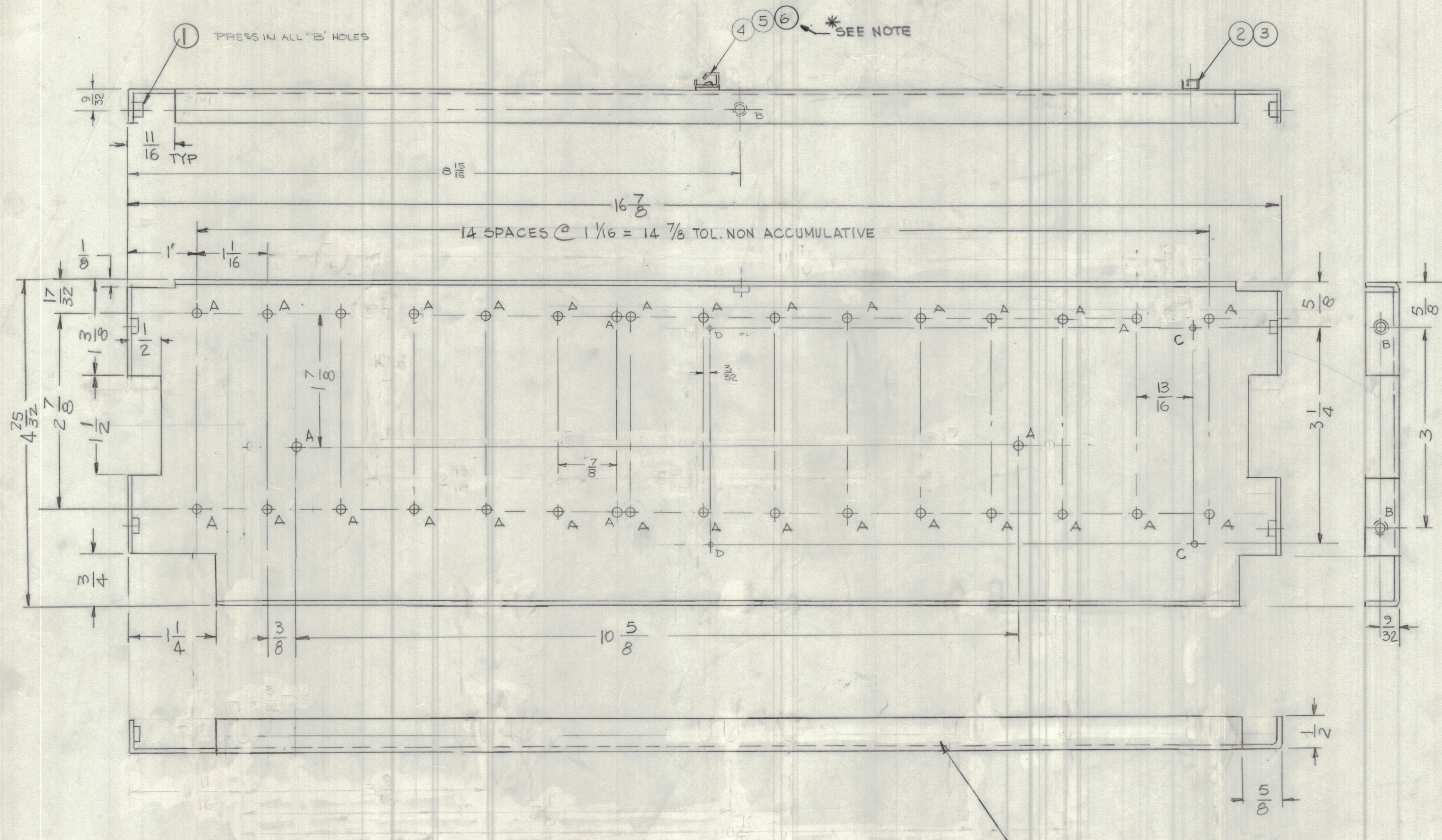
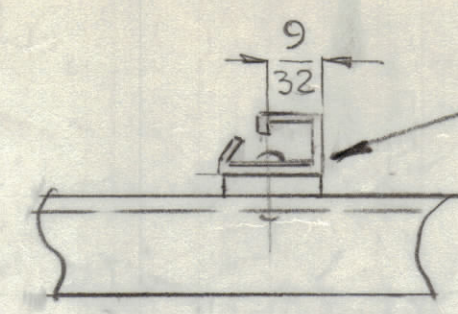


REVISIONS						
E.M.N.NO	DRAFT	CHKD	ZONE	LTR	DESCRIPTION	DATE
A	COL	WAB		Ø	ORIGINAL RELEASE FOR PRODUCTION	6-6-78



\* USE ITEMS 4, 5 & 6 ONLY WITH EQUALIZED FILTER

\* SEE NOTE

1 PRES IN ALL "B" HOLES

14 SPACES @ 1 1/16 = 14 7/8 TOL. NON ACCUMULATIVE

HOLE  
 A - .9/64 34 REQ.  
 B - .191 - .194 5 REQ.  
 C - .098 DIA 2 REQ.  
 D - .076 DIA 2 REQ.

MARK TMC P/NO 1/8 HIGH GOTHIC WITH LATEST REV. NO.

UNLESS OTHERWISE SPECIFIED:  
 1. USE MATERIAL THICKNESS FOR MAXIMUM RADIUS ON ALL BENDS.  
 2. ALL ANGULAR BENDS 90 DEGREES.  
 3. REMOVE ALL BURRS AND SHARP EDGES.  
 4. MOUNT INSERTS AFTER FINISHING.

QTY. REQ.	ITEM	PART NO.	DESCRIPTION	SYMBOL
1	6	MS 6874	SPACER	
2	5	EY103-5	EYELET MTL	
1	4	CU157-4	RETAINER, PC BOARD	
2	3	EY101-3	EYELET, MTL	
1	2	CU157-1	RETAINER PC.BD.	
5	1	NT 129.0632-4	NUT ROUND	

LIST OF MATERIAL

UNLESS OTHERWISE SPECIFIED DIMENSIONS ARE IN INCHES AND INCLUDE CHEMICALLY APPLIED OR PLATED FINISHES		FINAL APPROVAL * 808	DATE 6-2-78
TOLERANCES ON		MECH. DES. DH	DATE 11-29-77
DECIMALS .X ± .05 .XX ± .01 .XXX ± .005	FRACTIONS ± 1/64 ANGLES ± 0° -30'	ELECT. DES.	DATE
		CHECKED 808	DATE 11/29/77
		DRAWN G.D.L	DATE 9-7-77
MATERIAL .064 THK ALUM 5052-H32			
FINISH 5404 VEL. IRIDITE			

THE TECHNICAL MATERIEL CORP.  
MAMARONECK, NEW YORK

FRONT END CHASSIS

1	MMX(-)2B	BMA537
QTY / UNIT	MODEL USED ON	ASS'Y NO.
APPLICATION		
CODE		
NOTICE TO PERSONS RECEIVING THIS DRAWING THE TECHNICAL MATERIEL CORPORATION claims proprietary right in the material disclosed hereon. This drawing is issued in confidence for engineering information only and may not be reproduced or used to manufacture anything shown hereon without permission from THE TECHNICAL MATERIEL CORPORATION to the user. This drawing is loaned for mutual assistance and is subject to recall at any time.		

SIZE	CODE IDENT NO.	DWG NO.	ISSUE
D	82679	MS 6822	Ø
SCALE	1:1	SHEET	OF

B MS6822