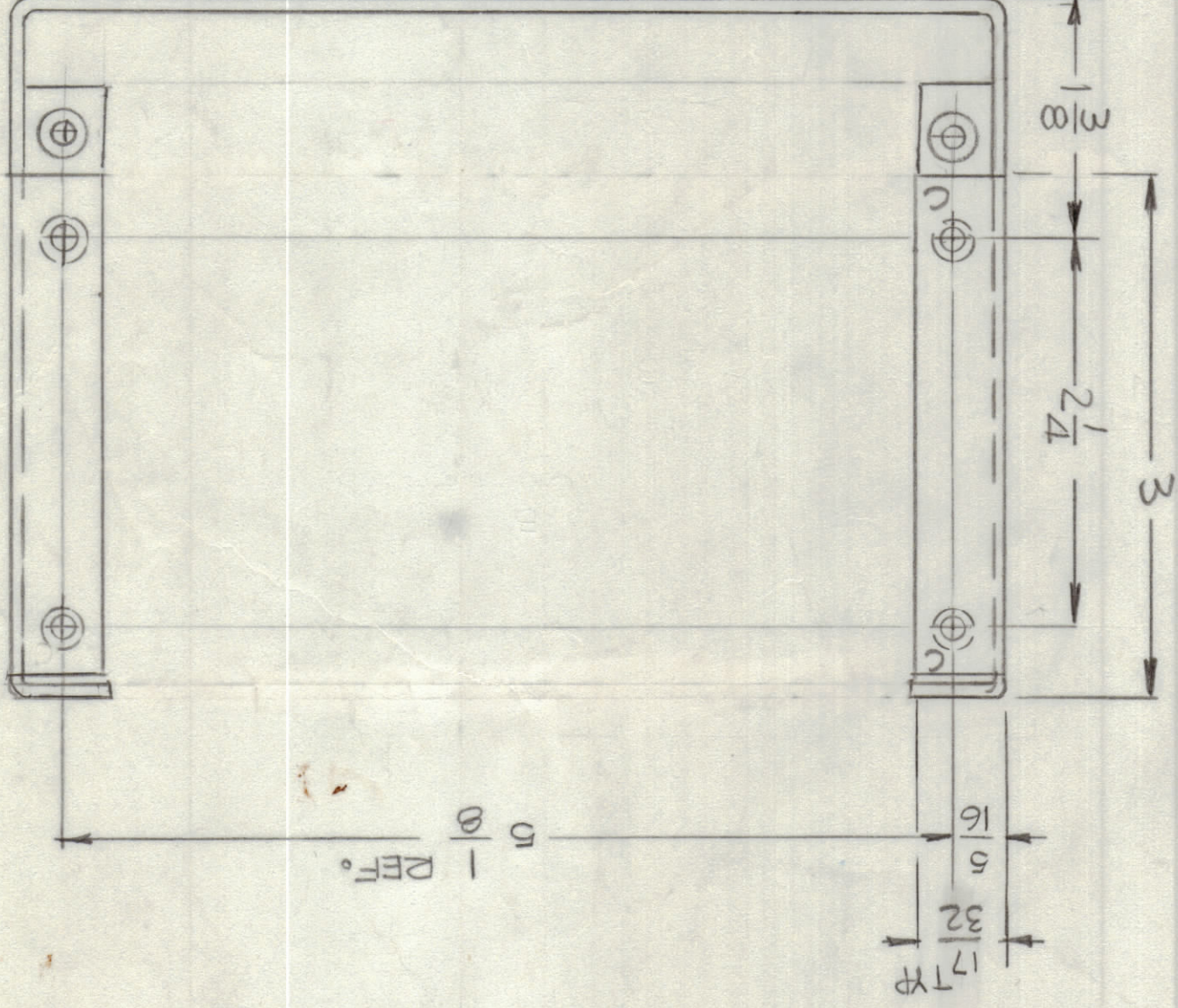
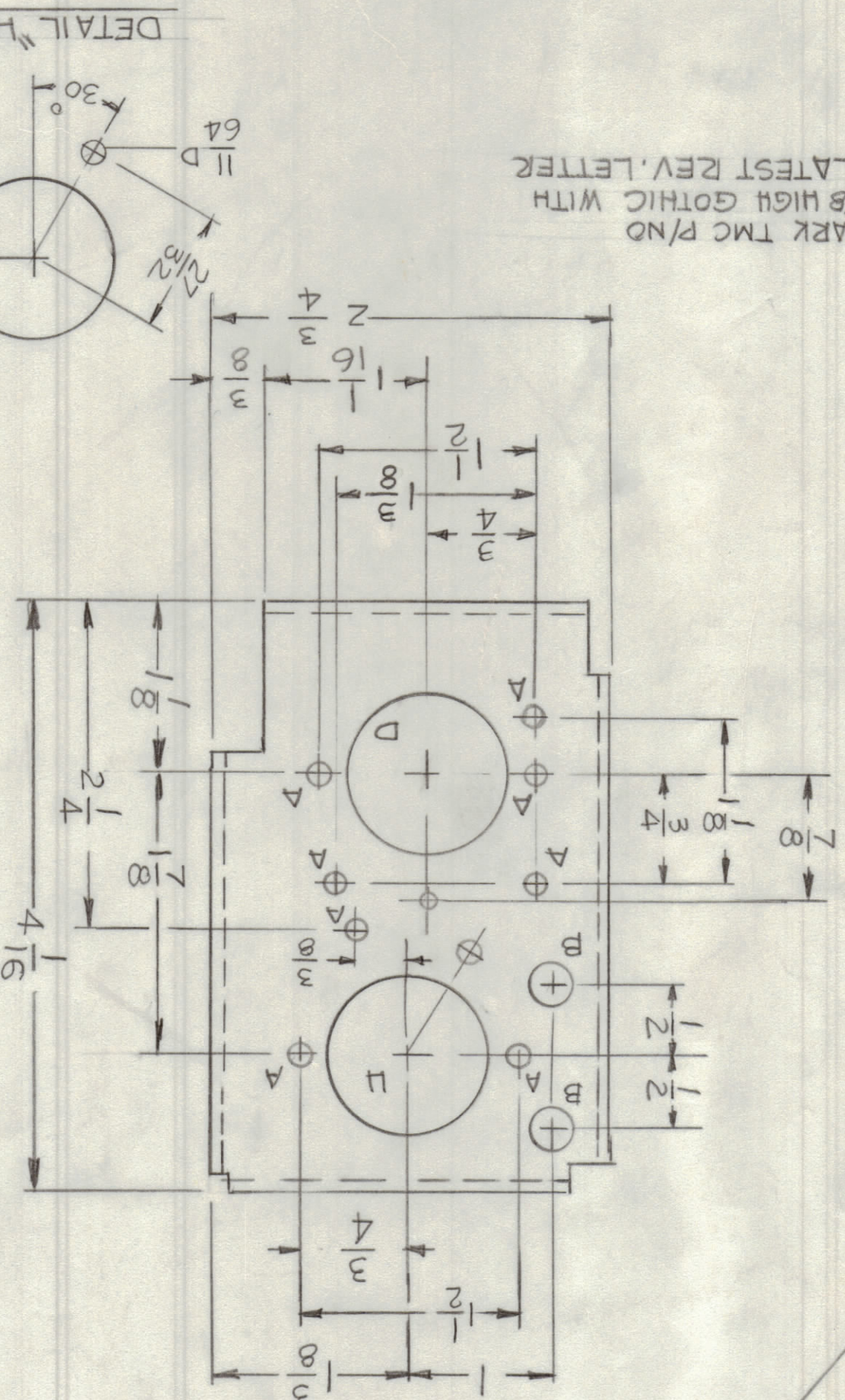
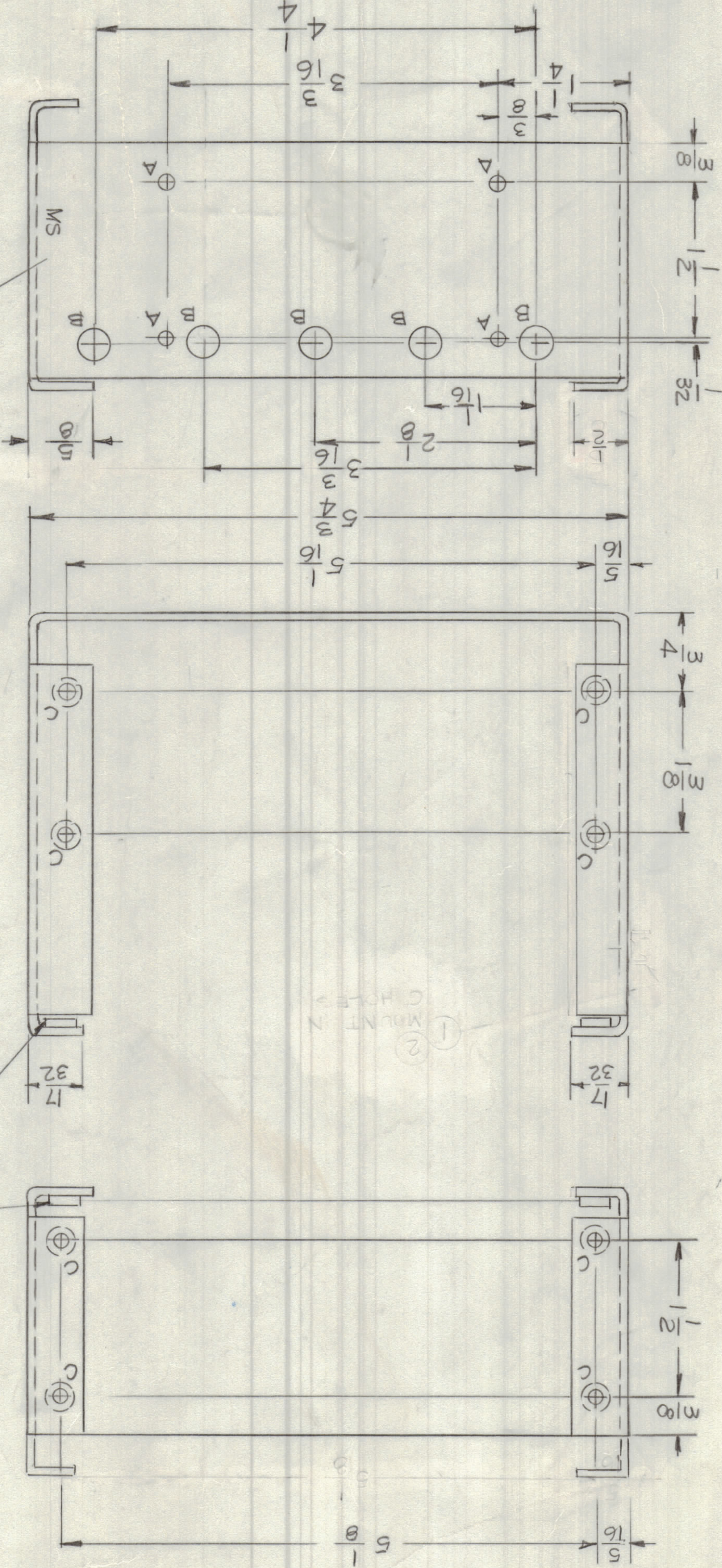
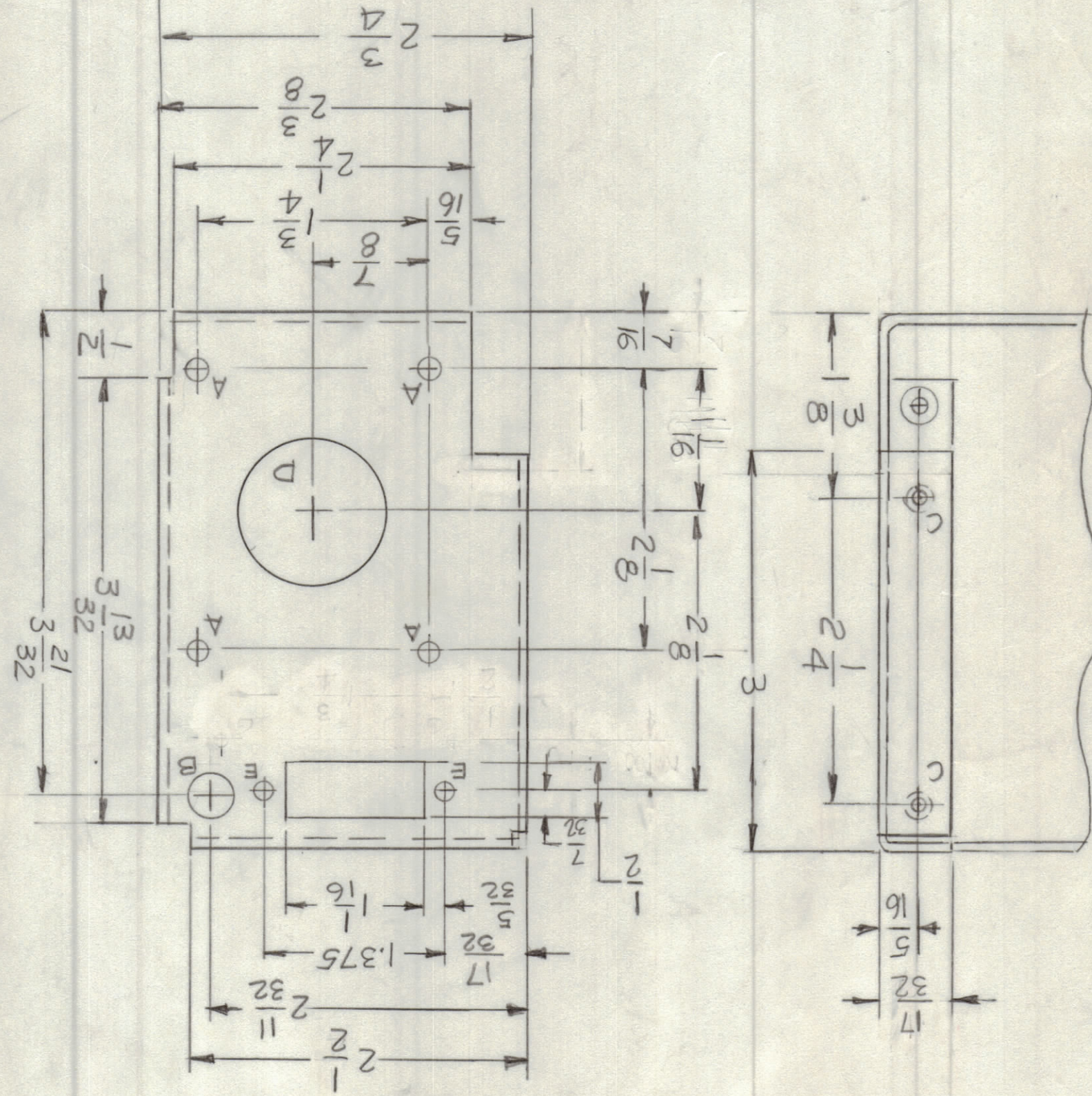


- HOLES:
- A - 11/64 DIA 16 REQ.
 - B - 5/16 DIA 8 REQ.
 - C - .191 - 194 DIA 12 REQ.
 - D - 1/8 DIA 22 REQ.
 - E - 9/64 DIA 22 REQ.
 - F - 3/32 DIA 12 REQ.
 - H - SEE DETAIL 12 REQ.



3 MOUNT IN "C" HOLES

MARK TMC P/N/D
1/8 HIGH GOTHIC WITH
LATEST REV. LETTER

DETAIL "H"

REF:

QTY.	ITEM	PART NO.	DESCRIPTION	SYMBOL
12	3	NT129 632-A	NUT, PLW, SPLINE	

DATE	MECH. DES.	OR PLATED FINISHES AND INCLUDE CHEMICALLY APPLIED DIMENSIONS ARE IN INCHES
6/17/78	[Signature]	
DATE	ELECT. DES.	TOLERANCES ON
11-29-77	[Signature]	

DATE	CHECKED	FRACTIONS
11/24/72	[Signature]	XX ± .01 X ± .05 ANGLES ± 0° -30'
DATE	DRAWN	DECIMALS
7-26-77	GDL	.XXX ± .005 XX ± .01 X ± .05 ANGLES ± 0° -30'

SCALE	SIZE
D	82679

OF	ISSUE	DESCRIPTION
1	MS 6823	BRACKET, MTG PWR SUPPLY

QTY / UNIT	MODEL USED ON	ASSY NO.
1	MMX1-2B	AX792

CODE	APPLICATION

REVISIONS	DATE	APPROVED	EM/N/NO	DRAFT	CHKD	ZONE	LTR	DESCRIPTION
1	6-6-78	*						ORIGINAL RELEASE FOR PRODUCTION

A
B
C
D

1
2
3
4
5
6
7
8

MS 6823

NOTICE TO PERSONS RECEIVING THIS DRAWING
THE TECHNICAL MATERIAL CORPORATION claims proprietary right in the material disclosed herein.
This drawing is issued in confidence for assistance in the design and construction of the product shown herein without permission from THE TECHNICAL MATERIAL CORPORATION
to manufacture any other product.